

PART NAME

PLASTIBOX (STYLE B)

PART No.

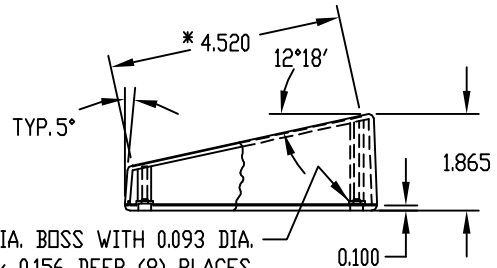
PSS-11295

MATERIAL: HIGH-IMPACT ABS
COLOR: BLACK OR GRAY
FINISH: TEXTURED BODY WITH SMOOTH TOP AND END INSERTS
 SIX (6) #4 x 0.375' LG. SCREWS SUPPLIED FOR ASSEMBLING TOP.

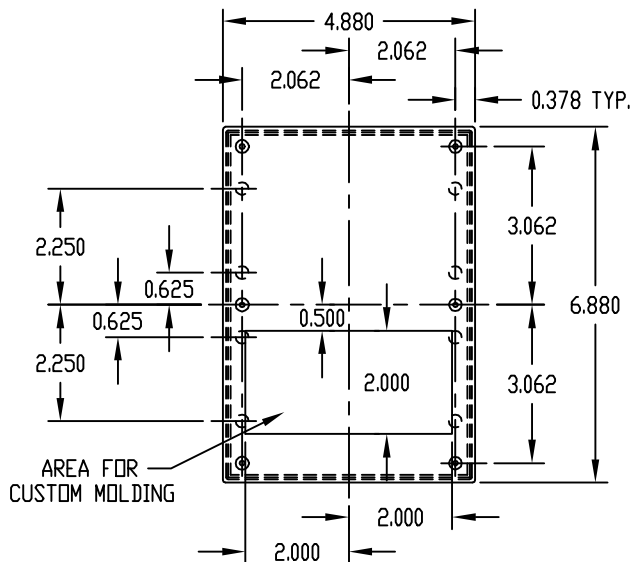
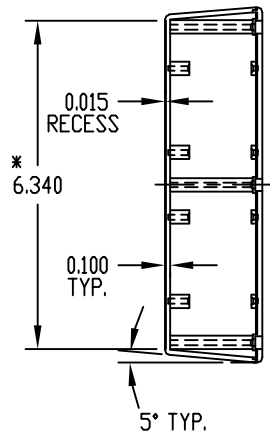
FOUR (4) NON-SKID PUSH-ON FEET SUPPLIED.

*-USABLE AREA ON COVER ALSO AVAILABLE FOR CUSTOM MOLDING.

NOTE: ALL DIMENSIONS HAVE ±0.015 TOLERANCE UNLESS OTHERWISE SPECIFIED.



0.250 DIA. BOSS WITH 0.093 DIA. HOLE x 0.156 DEEP (8) PLACES
 MOUNTING BOSSES USE EITHER M2.5 METRIC OR #4 STD. SHEET METAL SCREWS x 0.188' LG. (NOT SUPPLIED)



PART NAME

UTILIBOX (STYLE D)

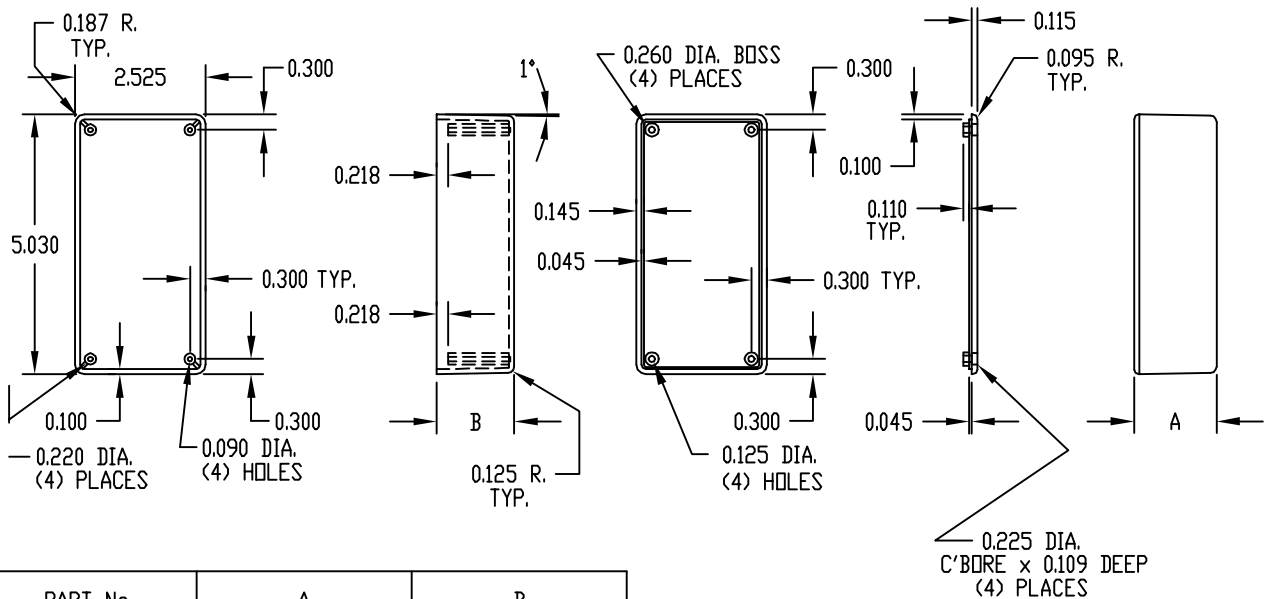
PART No.

CU-743 & CU-745

MATERIAL: HIGH-IMPACT POLYSTYRENE
COLOR: BLACK
FINISH: SMOOTH, MATTE

FOUR (4) #4 x 0.562' LG. SCREWS SUPPLIED FOR ASSEMBLY.

NOTE: ALL DIMENSIONS HAVE ±0.010 TOLERANCE UNLESS OTHERWISE SPECIFIED.



PART No.	A	B
CU-743	1.025	0.910
CU-745	1.615	1.500