

DIMENSIONS IN INCHES (METRIC-MILLIMETERS);  
DO NOT SCALE DRAWING..

Drawing Number

**CWR-227-XX-0003**

**NOTES:**

1. Dimensions are in inches; dimensions in ( ) are in millimeters.
2. Metric equivalents are given for general information only, and are based upon 1.00 inches equals (25.4) millimeters.
3. Unless otherwise specified, tolerances are  $\pm .005$  (.13) for three place decimals and  $\pm .01$  (.25) for two place decimals.
4. Polarization rib slot (RS-2) omitted in size 10 and 14 connectors.

**MATERIALS:**

PLASTIC PARTS - UL94V-0 Thermoplastic (blue, std.), flame retardant.  
CONTACTS - Phosphor bronze, standard.  
CONTACT PLATING - Full plating 100 Sn Pb (min.).

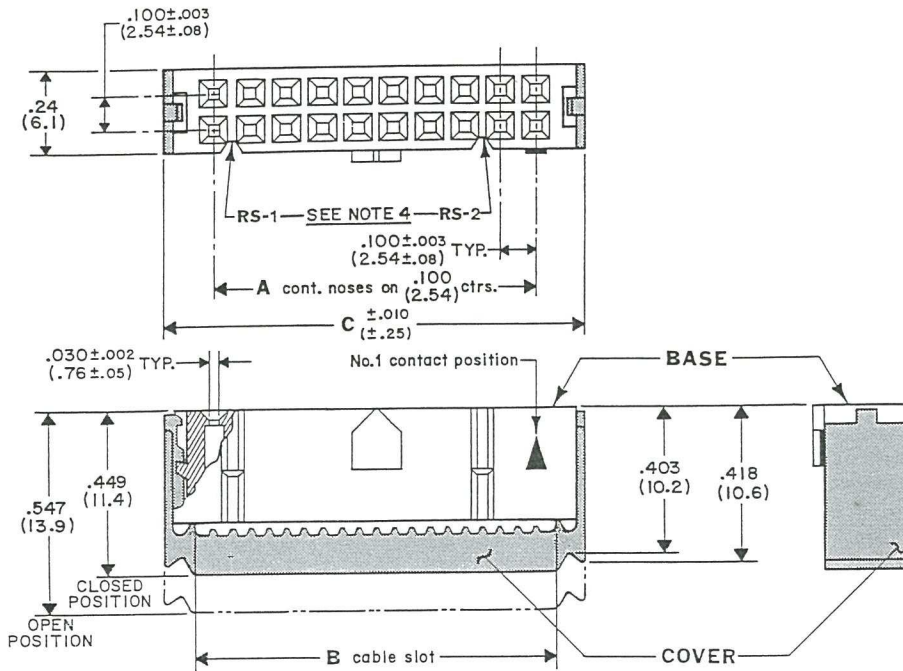
**OPERATING STANDARDS:**

TEMPERATURE RATING - 125°C.  
CONTACT RATING - 1 Ampere.  
DIELECTRIC STRENGTH - Over 500V.D.C. at sea level.  
CONDUCTORS ACCEPTED - 28-30AWG solid or stranded.

**CUSTOMER DRAWING**

CONNECTOR DIMENSIONS

No. Concls.	A	B	C
10	.400 (10.16)	.515 (13.08)	.677 (17.20)
14	.600 (15.24)	.715 (18.16)	.877 (22.28)
16	.700 (17.78)	.815 (20.70)	.977 (24.82)
20	.900 (22.86)	1.015 (25.78)	1.177 (29.90)
26	1.200 (30.48)	1.315 (33.40)	1.477 (37.52)
34	1.600 (40.64)	1.715 (43.56)	1.877 (47.68)
40	1.900 (48.26)	2.015 (51.18)	2.177 (55.30)
50	2.400 (60.96)	2.515 (63.88)	2.677 (68.00)
60	2.900 (73.66)	3.015 (76.58)	3.177 (80.70)



REVISIONS

**ATTENTION**  
THIS DRAWING AND ITS ATTACHMENTS, IF ANY, ARE PROPRIETARY TO CW INDUSTRIES AND DESCRIBE DESIGNS THAT ARE CONFIDENTIAL AND MUST NOT BE DISCLOSED UNLESS AUTHORIZED, IN WRITING, BY AN OFFICER OF CW INDUSTRIES.....

**CW INDUSTRIES**  
Southampton, Pa. 18966

TOLERANCES UNLESS OTHERWISE SPECIFIED  
2 Place decimal ± .010 METRIC  
3 Place decimal ± .005 1 Place dec. ± .25MM  
Angles . . . . . ± 1° 2 Place dec. ± .13MM

**SOCKET CONNECTOR PLAIN COVER**  
.100 x .100 CENTERS (.050 center flat cable)  
W/KEYING

Made for  
Drawn by L. Webber 10-8-90  
Checker: G. Bisk 10/9/90  
Eng. appl. G. Bisk 10/9/90

Division  
**CONNECTOR**  
Drawing Number  
**CWR-227-XX-0003**

**MASTER**