

DIMENSIONS IN INCHES (METRIC-MILLIMETERS)  
DO NOT SCALE DRAWING..

Drawing Number  
**CWR-170-XX-0000**

**NOTES:**

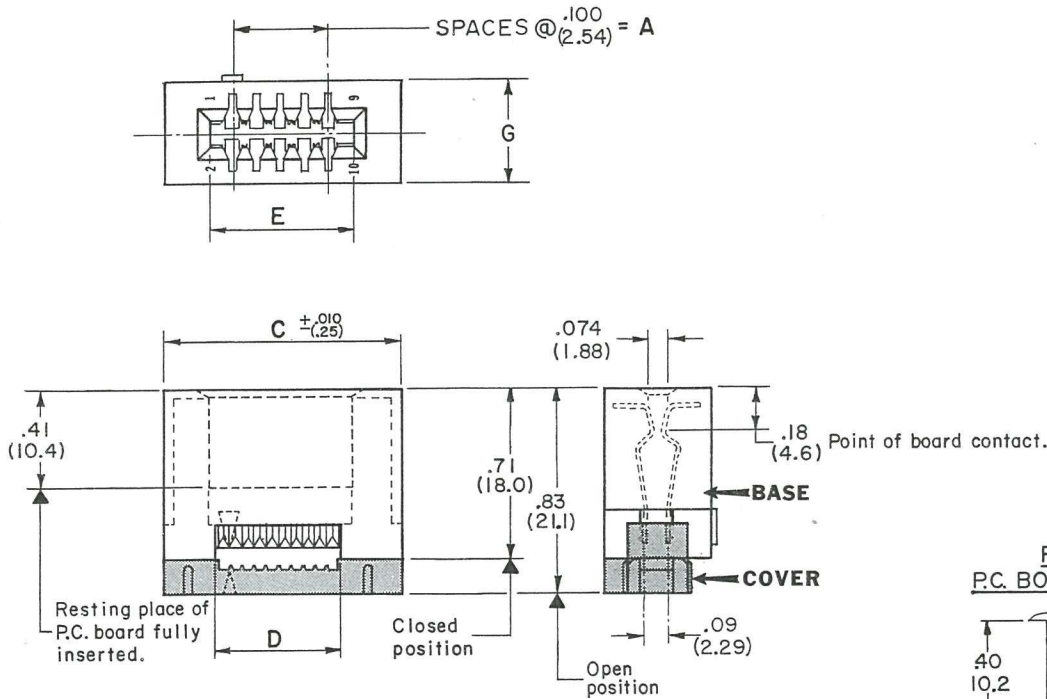
1. Dimensions shown in inches; dimensions in ( ) are in millimeters.
2. Metric equivalents given for general information only and are based upon 1.00 inches = (25.4) millimeters.
3. Unless otherwise specified, tolerances are  $\pm .005$  (.13) for three place decimals and  $\pm .01$  (.3) for two place decimals.

**MATERIALS:**

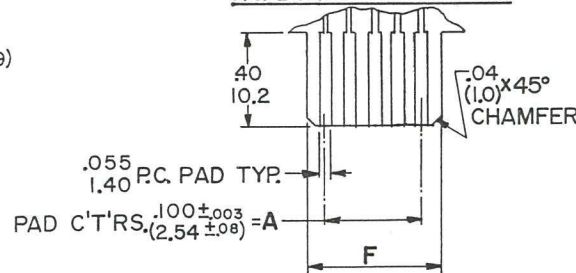
PLASTIC PARTS-UL94 V-O Thermoplastic (blue, std.) flame retardant.  
CONTACTS-Phosphor bronze, std.  
CONTACT PLATING-.000010 gold over .000050 nickel, std.

**OPERATING STANDARDS:**

TEMPERATURE RATING- 125°C.  
CONTACT RATING- 1Ampere.  
DIELECTRIC STRENGTH- Over 500 V.D.C. at sea level.  
CONDUCTORS ACCEPTED- 28-30 AWG solid or stranded.



**RECOMMENDED  
P.C. BOARD DIMENSIONS**



**CONNECTOR DIMENSIONS**

No. Confs.	A	C	D	E	F	G
10	.400 10.16	.976 24.79	.520 13.21	.604 15.34	.596 15.14	.43 10.9
20	.900 22.86	1.476 37.49	1.020 25.91	1.104 28.04	1.096 27.84	.43 10.9
26	1.200 30.48	1.776 45.11	1.320 33.53	1.404 35.66	1.396 35.46	.43 10.9
34	1.600 40.64	2.176 55.27	1.720 43.69	1.804 45.82	1.796 45.62	.43 10.9
40	1.900 48.26	2.476 62.89	2.020 51.31	2.104 53.44	2.096 53.24	.43 10.9
50	2.400 60.96	2.976 75.59	2.520 64.01	2.604 66.14	2.596 65.94	.44 11.2

REVISIONS

**ATTENTION**

THIS DRAWING AND ITS ATTACHMENTS, IF ANY, ARE PROPRIETARY TO CW INDUSTRIES AND DESCRIBE DESIGNS THAT ARE CONFIDENTIAL AND MUST NOT BE DISCLOSED UNLESS AUTHORIZED, IN WRITING, BY AN OFFICER OF CW INDUSTRIES.....

**CW INDUSTRIES**  
Southampton, Pa. 18966

TOLERANCES UNLESS OTHERWISE SPECIFIED  
2 Place decimal  $\pm .010$   
3 Place decimal  $\pm .005$   
Angles . . . . .  $\pm 1^\circ$

METRIC  
1 Place dec.  $\pm .25$ MM  
2 Place dec.  $\pm .13$ MM  
Made for  
Drawn by L. Webber 10-8-90  
Checker 6.2156 10/9/90  
Eng. appr. 6.2156 10/9/90

**CARD EDGE  
CONNECTOR**

for .050 ctrs.  
rnd. cond. cable

Division CONNECTOR

Drawing Number  
**CWR-170-XX-0000**

**MASTER**