

DIMENSIONS IN INCHES (METRIC-MILLIMETERS)  
DO NOT SCALE DRAWING..

Drawing Number  
**CWR-171-XX-0000**

**NOTES:**

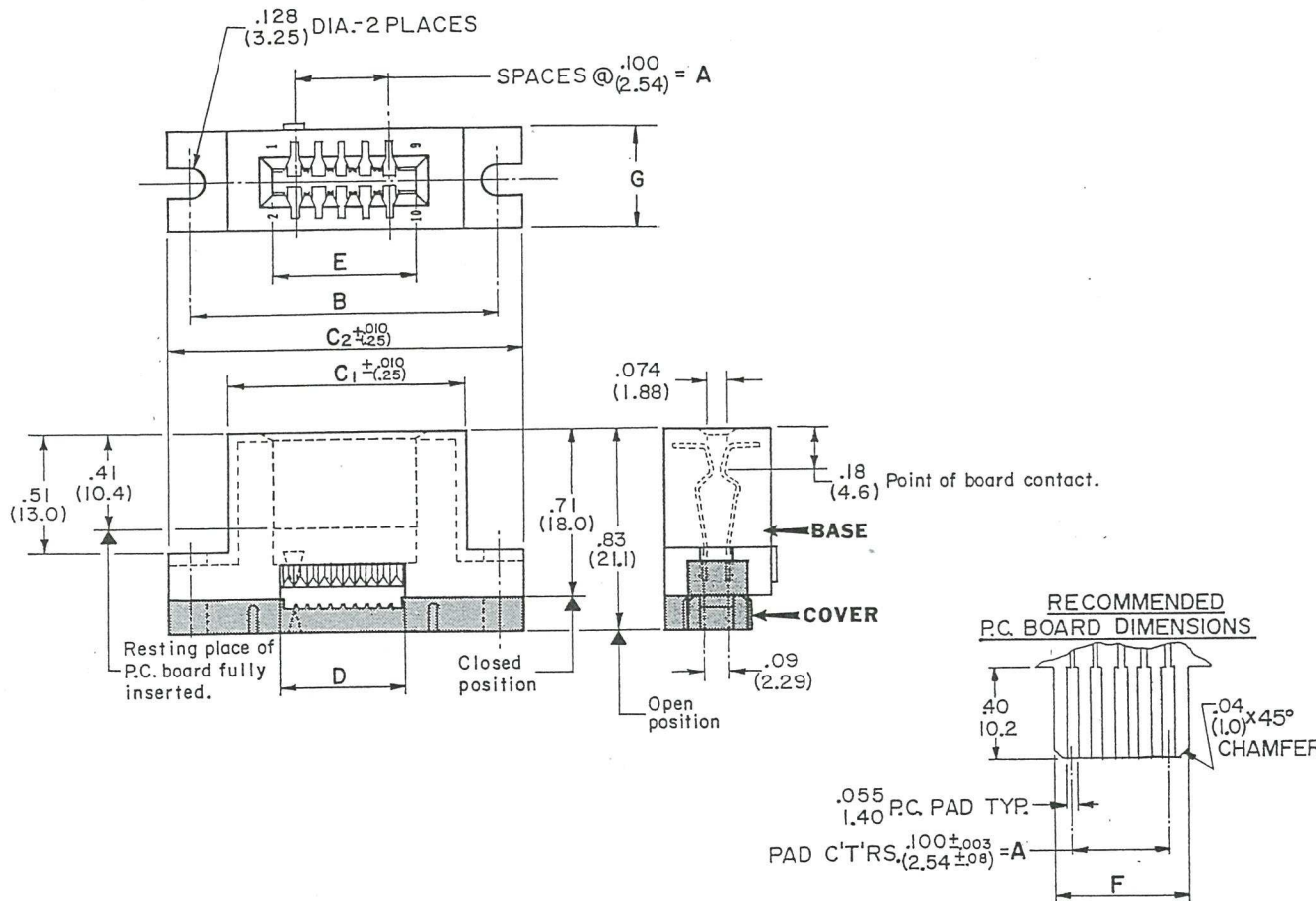
1. Dimensions shown in inches; dimensions in ( ) are in millimeters.
2. Metric equivalents given for general information only and are based upon 1.00 inches = (25.4) millimeters.
3. Unless otherwise specified, tolerances are  $\pm .005$  (.13) for three place decimals and  $\pm .01$  (.3) for two place decimals.

**MATERIALS:**

PLASTIC PARTS - UL94 V-O Thermoplastic (blue, std.) flame retardant.  
CONTACTS - Phosphor bronze, std.  
CONTACT PLATING - .000010 gold over .000050 nickel, std.

**OPERATING STANDARDS:**

TEMPERATURE RATING - 125°C.  
CONTACT RATING - 1 Ampere.  
DIELECTRIC STRENGTH - Over 500 V.D.C. at sea level.  
CONDUCTORS ACCEPTED - 28-30 AWG solid or stranded.



**CUSTOMER DRAWING**

CONNECTOR DIMENSIONS								
No. Conts.	A	B	C <sub>1</sub>	C <sub>2</sub>	D	E	F	G
10	.400 (10.16)	1.300 (33.02)	.976 (24.79)	1.500 (38.10)	.520 (13.21)	.604 (15.34)	.596 (15.14)	.43 (10.9)
20	.900 (22.86)	1.800 (45.72)	1.476 (37.49)	2.000 (50.80)	1.020 (25.91)	1.104 (28.04)	1.096 (27.84)	.43 (10.9)
26	1.200 (30.48)	2.100 (53.34)	1.776 (45.11)	2.300 (58.42)	1.320 (33.53)	1.404 (35.66)	1.396 (35.46)	.43 (10.9)
34	1.600 (40.64)	2.500 (63.50)	2.176 (55.27)	2.700 (68.58)	1.720 (43.69)	1.804 (45.82)	1.796 (45.62)	.43 (10.9)
40	1.900 (48.26)	2.800 (71.12)	2.476 (62.89)	3.000 (76.20)	2.020 (51.31)	2.104 (53.44)	2.096 (53.24)	.43 (10.9)
50	2.400 (60.96)	3.400 (86.36)	2.976 (75.59)	3.900 (99.86)	2.520 (64.01)	2.604 (66.14)	2.596 (65.94)	.44 (11.2)

REVISIONS  
O  
RELEASED  
SPR 11-22-91 NOV 2 # 1893

ATTENTION  
THIS DRAWING AND ITS ATTACHMENTS, IF ANY, ARE PROPRIETARY TO CW INDUSTRIES AND DESCRIBE DESIGNS THAT ARE CONFIDENTIAL AND MUST NOT BE DISCLOSED UNLESS AUTHORIZED, IN WRITING, BY AN OFFICER OF CW INDUSTRIES.

**CW INDUSTRIES**  
Southampton, Pa. 18966

TOLERANCES UNLESS OTHERWISE SPECIFIED  
2 Place decimal ±.010 METRIC  
3 Place decimal ±.005 1 Place dec. ±.25MM  
Angles . . . . . ±1° 2 Place dec. ±.13MM

**CARD EDGE CONNECTOR**

for .050 ctrs.  
rnd. cond. cable

Made for  
Drawn by SPR 11-22-91  
Checker G. GULD 11-25-91  
Eng. appr. A. HOSFELD 11-25-91

Division CONNECTOR  
Drawing Number  
**CWR-171-XX-0000**

**MASTER**