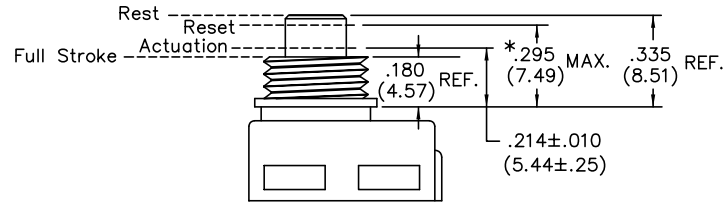
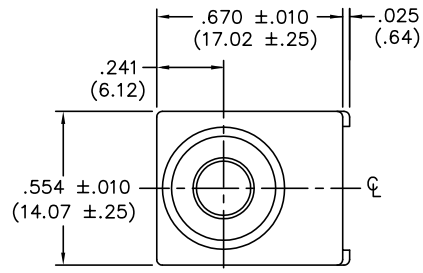


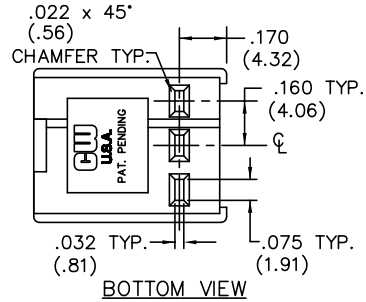
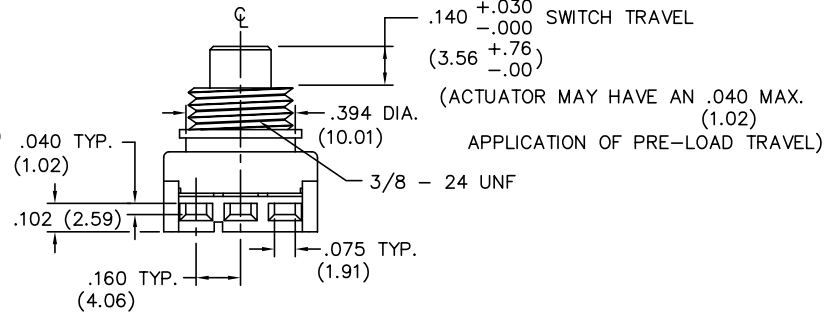
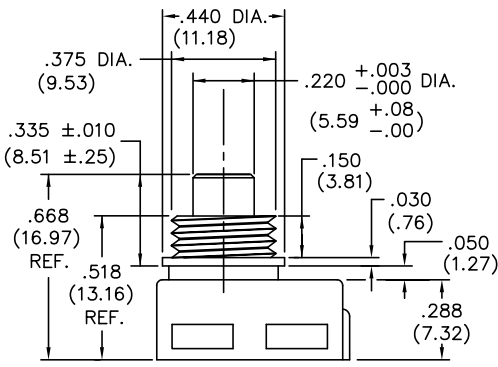
DIMENSIONS IN INCHES (MILLIMETERS)
DO NOT SCALE DRAWING

Dwg. No.
GC-536-0002

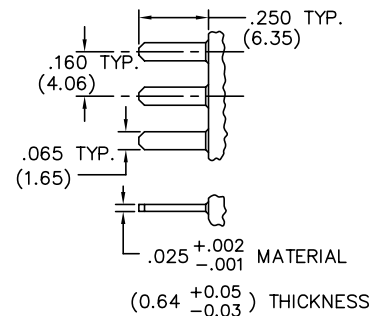


SWITCH TRAVEL SPECIFICATIONS

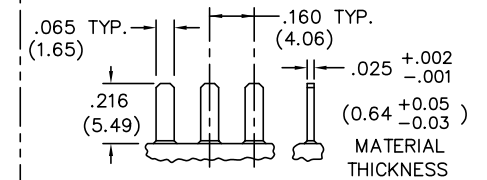
* Mating Part can Pre-Load Actuator down to .295 (7.49) Max..



SIDE TERMINATION LAYOUT



BOTTOM TERMINATION LAYOUT



TERMINATION - Insert male tabs into switch housing using side or bottom termination option. Refer to termination option layout for dimensions.*

1 2 3 4 5 6 7 8 9 10

FORM-B3 REVISIONS

THIS INFORMATION IS CONFIDENTIAL AND PROPRIETARY TO CW INDUSTRIES INCORPORATED AND ITS AFFILIATES. IT MAY NOT BE DISCLOSED TO ANYONE, OTHER THAN CW INDUSTRIES PERSONNEL, WITHOUT WRITTEN AUTHORIZATION FROM CW INDUSTRIES INCORPORATED, SOUTHAMPTON, PENNSYLVANIA USA.

CW INDUSTRIES
Southampton, Pa. 18966

TOLERANCES UNLESS OTHERWISE SPECIFIED
2 Place Decimal ±.010 METRIC
3 Place Decimal ±.005 1 Place Dec. ±.25mm
Angles ±1° 2 Place Dec. ±.13mm

Made for: CW IND.

Drawn by: DGW 11-17-2010

Checked by: G. Guld 11-18-10

Approval: EJP 11/19/10

Title:
SWITCH ASSEMBLY
PUSH ON-PUSH OFF
S.P.D.T.

Division:
SWITCH

Dwg. No.
GC-536-0002