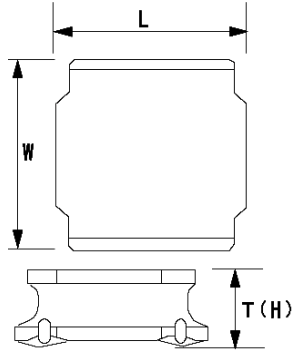


## SMD Power Inductors (NR series H type)

## NRH3010T6R8MN



## ■ Features

- Item Summary  
6.8  $\mu$ H( $\pm 20\%$ ), 700mA, 745mA
- Lifecycle Stage  
Mass Production
- Standard packaging quantity (minimum)  
Taping 2000pcs

## ■ Products characteristics table

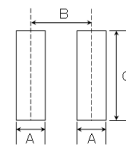
CaseSize (EIA/JIS)	-/3010
Inductance	6.8 $\mu$ H( $\pm 20\%$ )
Inductance Measuring Frequency	100kHz
Rated Current -Saturation Current	700mA
Rated Current -Temperature Rise Current	745mA
DC Resistance (max)	0.3 $\Omega$
Avg. of DC Resistance	0.25 $\Omega$
Temperature Range	-25°C to 120°C
Self-resonant Frequency (min)	44MHz
RoHS Compliance	Yes
Halogen Free	Yes
Soldering Method	Reflow

## ■ External Dimensions

L	3mm $\pm 0.1$
W	3mm $\pm 0.1$
H	1mm max

## ■ Recommended Land Patterns

【推奨ランドパターン】 実装上の注意 ・実装状態を確認の上ご使用ください。また、ご購入の際は、 ・本製品のはんだ付けはリフローはんだ工法に限り、 ・本製品は、
【Recommended Land Patterns】 Surface Mounting ・Mounting and soldering conditions should be checked beforehand. ・Applicable soldering process to these products is reflow soldering only.



SMD Power Inductors (NR series/NR series H type/S type /V type)			
Type	A	B	C
NR 3010, NRH3010,			
NR 3012, NRH3012, NRV3012,	0.8	2.2	2.7
NR 3015, NRS3015			

unit:mm