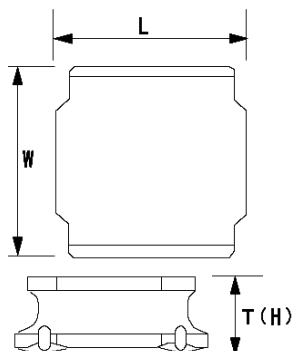


## SMD Power Inductors (NR series S type)

## NRS4012T150MDGJ



## ■ Features

- Item Summary  
15  $\mu$ H( $\pm$ 20%), 650mA, 750mA
- Lifecycle Stage  
Mass Production
- Standard packaging quantity (minimum)  
Taping 4500pcs

## ■ Products characteristics table

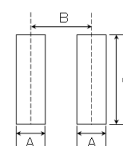
CaseSize (EIA/JIS)	~/4012
Inductance	15 $\mu$ H( $\pm$ 20%)
Inductance Measuring Frequency	100kHz
Rated Current -Saturation Current	650mA
Rated Current -Temperature Rise Current	750mA
DC Resistance (max)	0.312 $\Omega$
Avg. of DC.Resistance	0.26 $\Omega$
Temperature Range	-25 $^{\circ}$ C to 125 $^{\circ}$ C
Self-resonant Frequency (min)	24MHz
RoHS Compliance	Yes
Halogen Free	Yes
Soldering Method	Reflow

## ■ External Dimensions

L	4mm $\pm$ 0.2
W	4mm $\pm$ 0.2
H	1.2mm max

## ■ Recommended Land Patterns

【推奨ランドパターン】 実装上の注意 ・実装状態を確認の上ご使用ください。また、ご購入の際は、 ・本製品のはんだ付けはリフローはんだ工法に限ります。
【Recommended Land Patterns】 Surface Mounting ・Mounting and soldering conditions should be checked beforehand. ・Applicable soldering process to these products is reflow soldering only.



SMD Power Inductors (NR series/NR series H type/S type /V type)			
Type	A	B	C
NR 4010, NRS4010,			
NR 4012, NRS4012,	1.2	2.8	3.7
NR 4018, NRS4018			

unit:mm

2014.03.06

The data is reference only. Electrical characteristics vary depending on environment or measurement condition.  
TAIYO YUDEN reserves the right to make change to the Date at any time without notice.  
Before making final selection, please check product specification.