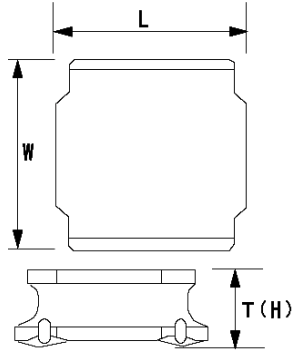


Spec Sheet

6012 3 3

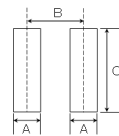


66 - 3.3 (30%), 1800 , 1700
 - 6
 - ()
 1000
 6 6

(/)	-/6012
6	3.3 (30%)
6 6	100
6 6 -	1800
-	1700
6 ()	0.126
- . . 4 6	0.105
- 4 6	-25 125
- 4 ()	42
4	4
4	

6	0.2
6	0.2
1.2	

【推奨ランドパターン】
 実装上の注意
 ・実装状態を確認の上ご使用ください。また、お問い合わせください。
 ・本製品のハンダ付けはリフローハンダ工法に限り、適用します。
 【Recommended Land Patterns】
 Surface Mounting
 ・Mounting and soldering conditions should be checked beforehand.
 ・Applicable soldering process to these products is reflow soldering only.



SMD Power Inductors (NR series/NR series H type/S type/V type)

Type	A	B	C
NRS601.0			
NRS601.2, NRS601.2			
NRS601.4	1.6	4.7	5.7
NR 6020, NRS6020			
NR 6038, NRS6038			
NR 6045, NRS6045			

unit: mm

The data is reference only. Electrical characteristics vary depending on environment or measurement condition.
 TAIYO YUDEN reserves the right to make change to the Date at any time without notice.
 Before making final selection, please check product specification.

2014.03.06