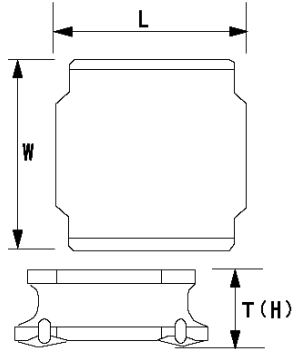


SMD Power Inductors (NR series S type)

NRS8040T150MJGJ



■ Features

- Item Summary
15 μ H(\pm 20%), 2900mA, 2400mA
- Lifecycle Stage
Mass Production
- Standard packaging quantity (minimum)
Taping 1000pcs

■ Products characteristics table

CaseSize (EIA/JIS)	-/8040
Inductance	15 μ H(\pm 20%)
Inductance Measuring Frequency	100kHz
Rated Current -Saturation Current	2900mA
Rated Current -Temperature Rise Current	2400mA
DC Resistance (max)	0.065 Ω
Avg. of DC.Resistance	0.05 Ω
Temperature Range	-25 $^{\circ}$ C to 125 $^{\circ}$ C
Self-resonant Frequency (min)	16MHz
RoHS Compliance	Yes
Halogen Free	Yes
Soldering Method	Reflow

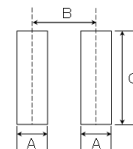
■ External Dimensions

L	8mm \pm 0.2
W	8mm \pm 0.2
H	4mm max

■ Recommended Land Patterns

【推奨ランドパターン】
 実装上の注意
 ・実装状態を確認の上ご使用ください。また、お買い上げの際は、
 ・本製品のはんだ付けはリフローはんだ工法に限り、

【Recommended Land Patterns】
 Surface Mounting
 ・Mounting and soldering conditions should be checked beforehand.
 ・Applicable soldering process to these products is reflow soldering only.



SMD Power Inductors (NR series/NR series H type/S type /V type)

Type	A	B	C
NRS8030,	1.8	5.6	7.5
NR 6040, NRS8040			

unit:mm