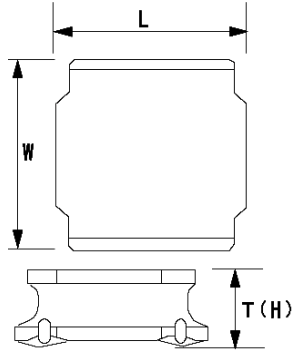


# Spec Sheet

SMD Power Inductors for Industrial / Automotive Comfort and Safety Applications (NR series H type / V type / S type)

## NRS5012T1R0NMGFV



### ■ Features

- Item Summary  
1.0  $\mu$ H( $\pm$ 30%), 4500mA, 2300mA
- Lifecycle Stage  
Mass Production
- AEC-Q200 qualified
- Standard packaging quantity (minimum)  
Taping 1000pcs

### ■ Products characteristics table

CaseSize (EIA/JIS)	-/5012
Inductance	1.0 $\mu$ H( $\pm$ 30%)
Inductance Measuring Frequency	100kHz
Rated Current -Saturation Current	4500mA
Rated Current -Temperature Rise Current	2300mA
DC Resistance (max)	0.0636 $\Omega$
Avg. of DC Resistance	0.053 $\Omega$
Temperature Range	-40°C to 125°C
Self-resonant Frequency (min)	100MHz
RoHS Compliance	Yes
Halogen Free	Yes
Soldering Method	Reflow

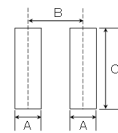
### ■ External Dimensions

L	4.9mm $\pm$ 0.2
W	4.9mm $\pm$ 0.2
H	1.2mm max

### ■ Recommended Land Patterns

【推奨ランドパターン】  
 実装上の注意  
 ・実装状態を確認の上で使用ください。また、ご購入の際は、  
 ・本製品のほんだ付けはフラットハンダ工法でお願いします。

【Recommended Land Patterns】  
 Surface Mounting  
 ・Mounting and soldering conditions should be checked beforehand  
 ・Applicable soldering process to these products is reflow soldering only.



SMD Power Inductors (NR series/NR series H type/S type /V type)

Type	A	B	C
NRS5010			
NRS5012			
NRS5014			
NRS5020	1.5	3.6	4
NRS5024			
NRS5030			
NR 5040, NRS5040			

unit:mm

The data is reference only. Electrical characteristics vary depending on environment or measurement condition.  
 TAIYO YUDEN reserves the right to make change to the Date at any time without notice.  
 Before making final selection, please check product specification.

2014.03.06