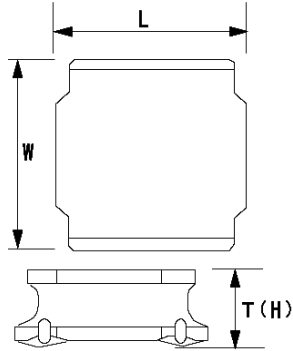


# Spec Sheet

SMD Power Inductors for Industrial / Automotive Comfort and Safety Applications (NR series H type / V type / S type)

## NRS5030T220MMGJV



### ■ Features

- Item Summary  
22  $\mu$ H ( $\pm 20\%$ ), 1400mA, 1050mA
- Lifecycle Stage  
Mass Production
- AEC-Q200 qualified
- Standard packaging quantity (minimum)  
Taping 500pcs

### ■ Products characteristics table

CaseSize (EIA/JIS)	-/5030
Inductance	22 $\mu$ H ( $\pm 20\%$ )
Inductance Measuring Frequency	100kHz
Rated Current -Saturation Current	1400mA
Rated Current -Temperature Rise Current	1050mA
DC Resistance (max)	0.234 $\Omega$
Avg. of DC.Resistance	0.18 $\Omega$
Temperature Range	-40°C to 125°C
Self-resonant Frequency (min)	13MHz
RoHS Compliance	Yes
Halogen Free	Yes
Soldering Method	Reflow

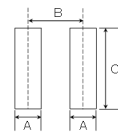
### ■ External Dimensions

L	4.9mm $\pm 0.2$
W	4.9mm $\pm 0.2$
H	3mm max

### ■ Recommended Land Patterns

【推奨ランドパターン】  
 実装上の注意  
 ・実装状態を確認の上で使用ください。また、ご購入の際は、  
 ・本製品のほんだ付けはフラワーはんだ工法に準じます。

【Recommended Land Patterns】  
 Surface Mounting  
 ・Mounting and soldering conditions should be checked beforehand  
 ・Applicable soldering process to these products is reflow soldering only.



SMD Power Inductors (NR series/NR series H type/S type /V type)

Type	A	B	C
NRS010			
NRS012			
NRS014			
NRS020	1.5	3.6	4
NRS024			
NRS030			
NR 5040, NRS5040			

unit:mm

The data is reference only. Electrical characteristics vary depending on environment or measurement condition.  
 TAIYO YUDEN reserves the right to make change to the Date at any time without notice.  
 Before making final selection, please check product specification.

2014.03.06