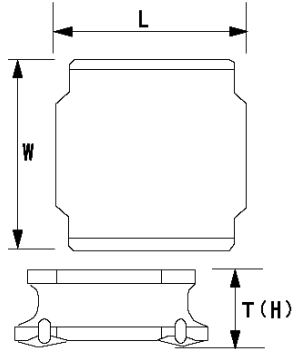


Spec Sheet

SMD Power Inductors for Industrial / Automotive Comfort and Safety Applications (NR series H type / V type / S type)

NRS6045T1R0NMGKV



■ Features

- Item Summary
1.0 μ H(\pm 30%), 9800mA, 4500mA
- Lifecycle Stage
Mass Production
- AEC-Q200 qualified
- Standard packaging quantity (minimum)
Taping 1500pcs

■ Products characteristics table

CaseSize (EIA/JIS)	-/6045
Inductance	1.0 μ H(\pm 30%)
Inductance Measuring Frequency	100kHz
Rated Current -Saturation Current	9800mA
Rated Current -Temperature Rise Current	4500mA
DC Resistance (max)	0.0182 Ω
Avg. of DC.Resistance	0.014 Ω
Temperature Range	-40°C to 125°C
Self-resonant Frequency (min)	110MHz
RoHS Compliance	Yes
Halogen Free	Yes
Soldering Method	Reflow

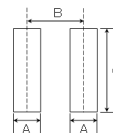
■ External Dimensions

L	6mm \pm 0.2
W	6mm \pm 0.2
H	4.5mm max

■ Recommended Land Patterns

【推奨ランドパターン】
実装上の注意
・実装状態を確認の上ご使用くださいようお願いいたします。
・本製品のはんだ付けはリフローはんだ工法に限りま。

【Recommended Land Patterns】
Surface Mounting
・Mounting and soldering conditions should be checked beforehand.
・Applicable soldering process to these products is reflow soldering only.



SMD Power Inductors (NR series/NR series H type/S type /V type)

Type	A	B	C
NRS601.0			
NR 601.2, NRS601.2			
NRS601.4	1.6	4.7	5.7
NR 602.0, NRS602.0			
NR 602.8, NRS602.8			
NR 604.5, NRS604.5			

unit: mm

2014.03.06

The data is reference only. Electrical characteristics vary depending on environment or measurement condition.
TAIYO YUDEN reserves the right to make change to the Date at any time without notice.
Before making final selection, please check product specification.