

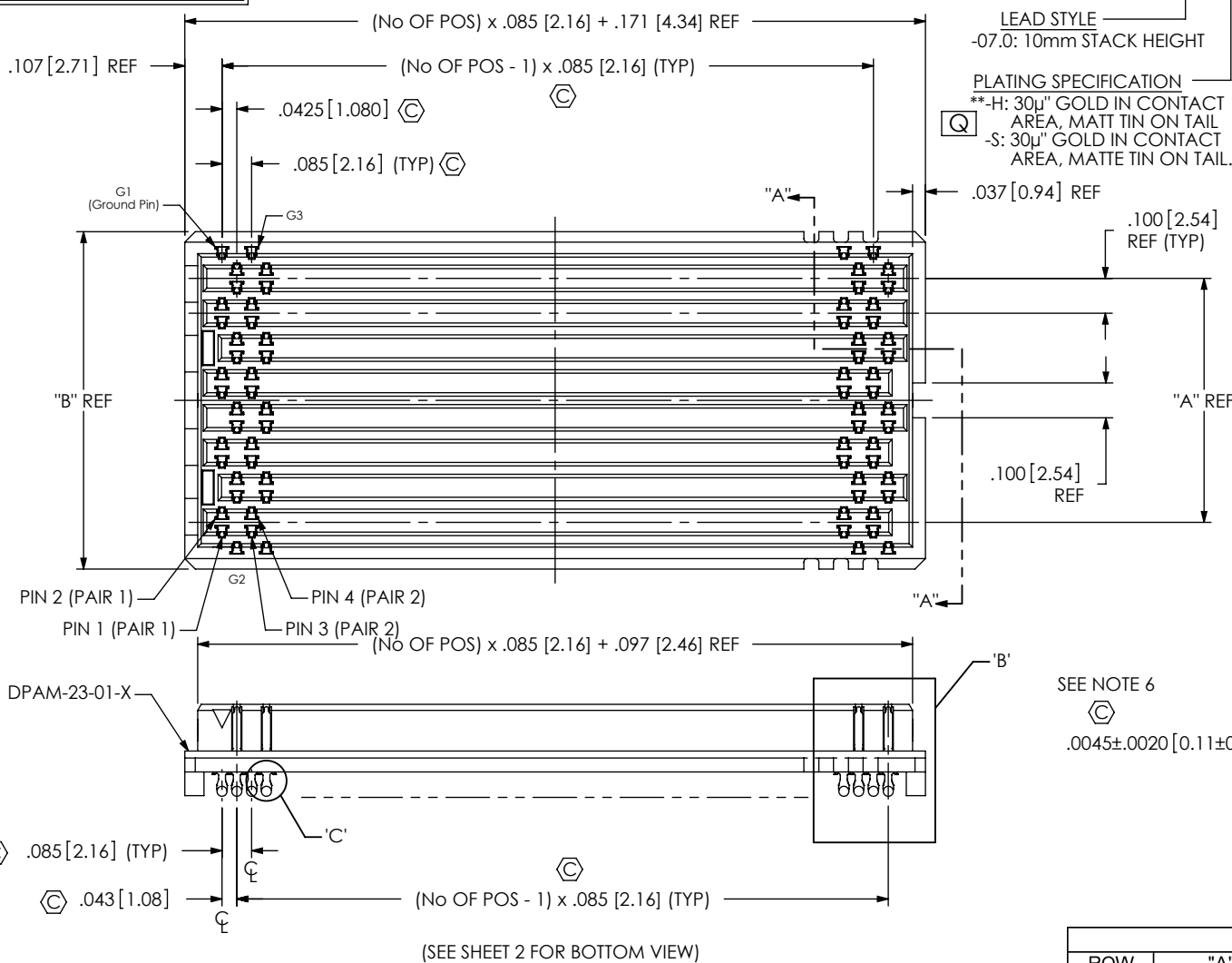
PATENT NUMBERS

6979238 / 7137832
 6969286 / 7178232
 7159312 / 7172438
 7052337 / 7125293

FIG 1
 DPAM-23-07.0-X-8-1 SHOWN
 (ALL TERMINALS NOT SHOWN FOR CLARITY)

DPAM-XX-07.0-X-X-X-XX

DO NOT SCALE FROM THIS PRINT



No OF POSITIONS
 -04, -06, -08, -15, -23, *-30
 (PER ROW)

LEAD STYLE
 -07.0: 10mm STACK HEIGHT

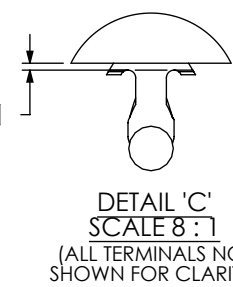
PLATING SPECIFICATION
 ** -H: 30μ" GOLD IN CONTACT AREA, MATT TIN ON TAIL
 -S: 30μ" GOLD IN CONTACT AREA, MATTE TIN ON TAIL.

OPTION
 -A: ALIGNMENT PIN (SEE FIG. 2, SHT 3)
 -K: KAPTON PAD (SEE FIG. 3, SHT 3)
 -TR: TAPE & REEL
 *-GP: GUIDE POST (SEE FIG. 4, SHT 4) (23 POSITION ONLY)
 SOLDER CRIMP MATERIAL
 -1: 63%TIN/37%LEAD (USE T-1M26-07.0-X-01)
 -2: 96.5% TIN/3% SILVER/0.5% COPPER (USE T-1M26-07.0-X-02)

ROW
 -8: 8 DIFFERENTIAL PAIR ROWS
 -3: 3 DIFFERENTIAL PAIR ROWS
 * = NOT RELEASED FOR PRODUCTION
 ** = FOR EXISTING CUSTOMERS ONLY

TABLE 1 - ARRAY SIZE TABLE

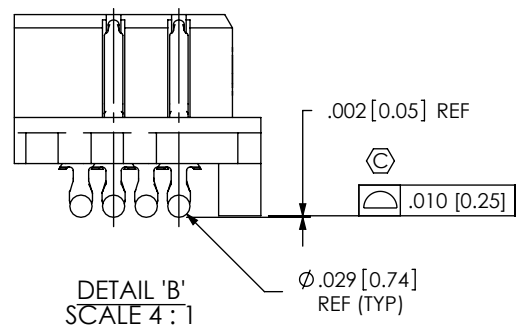
SIZE	DIFFERENTIAL PAIRS PER ARRAY	
	3 ROW	8 ROW
-04	6 PAIRS	16 PAIRS
-06	12 PAIRS	32 PAIRS
-08	18 PAIRS	48 PAIRS
-15	39 PAIRS	104 PAIRS
-23	63 PAIRS	168 PAIRS
-30	84 PAIRS	N/A



SEE NOTE 6
 Ⓢ
 .0045 ± .0020 [0.11 ± 0.05]

TABLE 2

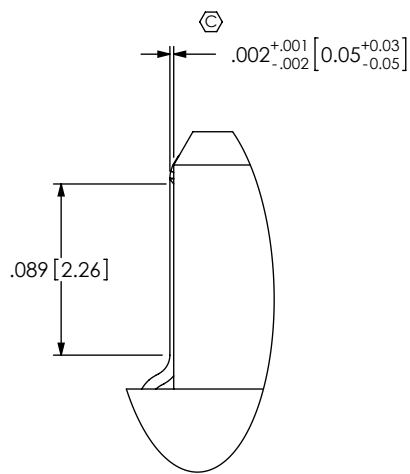
ROW	"A"	"B"	"C"
-8	.700 [17.78]	.968 [24.59]	.234 [5.94]
-3	.200 [5.08]	.468 [11.89]	.1650 [4.191]



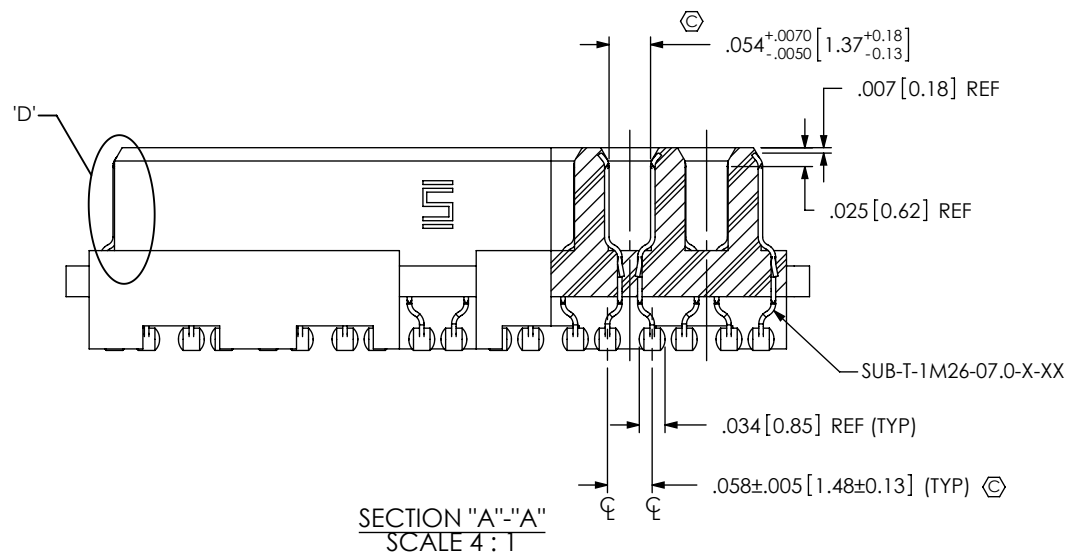
- NOTES:
- Ⓢ REPRESENTS A CRITICAL DIMENSION.
 - MINIMUM PUSHOUT FORCE: .5 LBS.
 - PARTS PACKAGED IN TRAYS
 - SOLDER CRIMP LOCATION MUST BE VERIFIED ON 6 CONSECUTIVE PINS.
 - SEE RECOMMENDED FOOTPRINT DRAWING FOR STENCIL REQUIREMENTS.
 - CHECK THIS DIMENSION ON ALL 4 CORNERS OF THE ASSEMBLY.

UNLESS OTHERWISE SPECIFIED, DIMENSIONS ARE IN INCHES. TOLERANCES ARE: DECIMALS ANGLES .XX: ±.01 [.3] 2° .XXX: ±.003 [.08] .XXXX: ±.0015 [.038]	PROPRIETARY NOTE THIS DOCUMENT CONTAINS INFORMATION CONFIDENTIAL AND PROPRIETARY TO SAMTEC, INC. AND SHALL NOT BE REPRODUCED OR TRANSFERRED TO OTHER DOCUMENTS OR DISCLOSED TO OTHERS OR USED FOR ANY PURPOSE OTHER THAN THAT WHICH IT WAS OBTAINED WITHOUT THE EXPRESSED WRITTEN CONSENT OF SAMTEC, INC.	520 PARK EAST BLVD. NEW ALBANY, IN 47150 PHONE: 812-944-6733 FAX: 812-948-5047 e-Mail: info@SAMTEC.com code: 53322
BY: CHAD F 6/3/2003		SHEET 1 OF 4

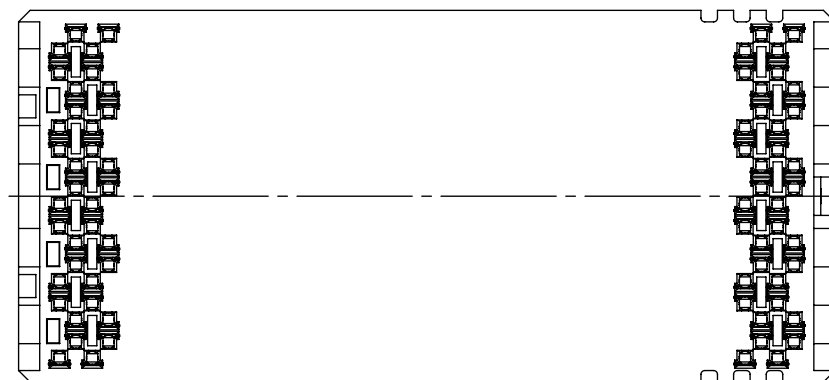
C:\EnterpriseVault\DWG\MISC\MKTG\DPAM-XX-07.0-X-X-X-XX-MKT.SLDDRW



DETAIL 'D'
SCALE 10:1



SECTION "A"-"A"
SCALE 4:1



(BOTTOM VIEW PROJECTED FROM SHEET 1)
(ALL TERMINALS NOT SHOWN FOR CLARITY)

PROPRIETARY NOTE
THIS DOCUMENT CONTAINS INFORMATION
CONFIDENTIAL AND PROPRIETARY TO
SAMTEC, INC. AND SHALL NOT BE REPRODUCED
OR TRANSFERRED TO OTHER DOCUMENTS OR
DISCLOSED TO OTHERS OR USED FOR ANY
PURPOSE OTHER THAN THAT WHICH IT WAS
OBTAINED WITHOUT THE EXPRESSED WRITTEN
CONSENT OF SAMTEC, INC.

DO NOT SCALE DRAWING

SHEET SCALE: 2:1

samtec

520 PARK EAST BLVD. NEW ALBANY, IN 47150
PHONE: 812-944-6733 FAX: 812-948-5047
e-Mail: info@SAMTEC.com code: 55322

DESCRIPTION:
.085 PITCH DP TERMINAL ASSEMBLY

DWG. NO. DPAM-XX-07.0-X-X-X-XX

BY: CHAD F 6/3/2003 SHEET 2 OF 4

FIG 2
 DPAM-23-07.0-X-8-1-A SHOWN
 (SAME AS FIG. 1, EXCEPT AS SHOWN)
 [ALL TERMINALS NOT SHOWN FOR CLARITY]

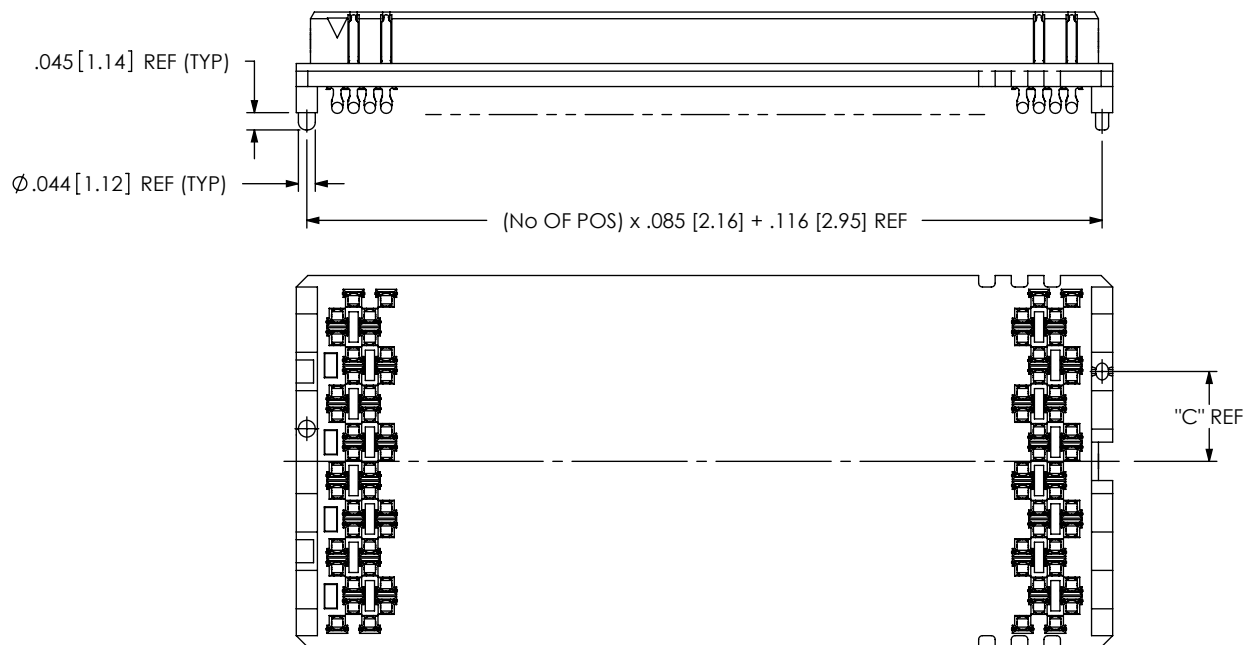


FIG 3
 DPAM-23-07.0-X-8-1-A-K SHOWN
 (SAME AS FIG. 1, EXCEPT AS SHOWN)
 (ALL TERMINALS NOT SHOWN FOR CLARITY)

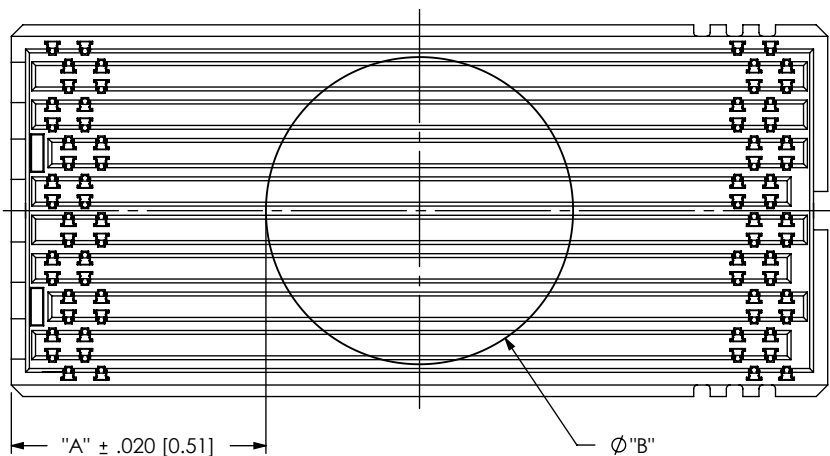
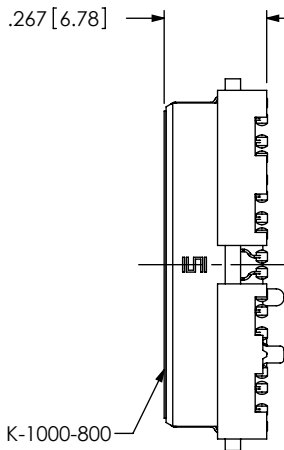


TABLE 2			
ROW OPTION	# OF POSITIONS	DIM "A"	DIA "B"
3 ROW	4,6,8,15,23,30	"A" = $((\text{No OF POS}) \times .085 [2.16]) / 2 - .064 [1.63]$.30 [7.5]
8 ROW	4,6	"A" = $((\text{No OF POS}) \times .085 [2.16]) / 2 - .314 [7.98]$.30 [7.5]
8 ROW	8,15,23,30	"A" = $((\text{No OF POS}) \times .085 [2.16]) / 2 - .314 [7.98]$.80 [20.3]




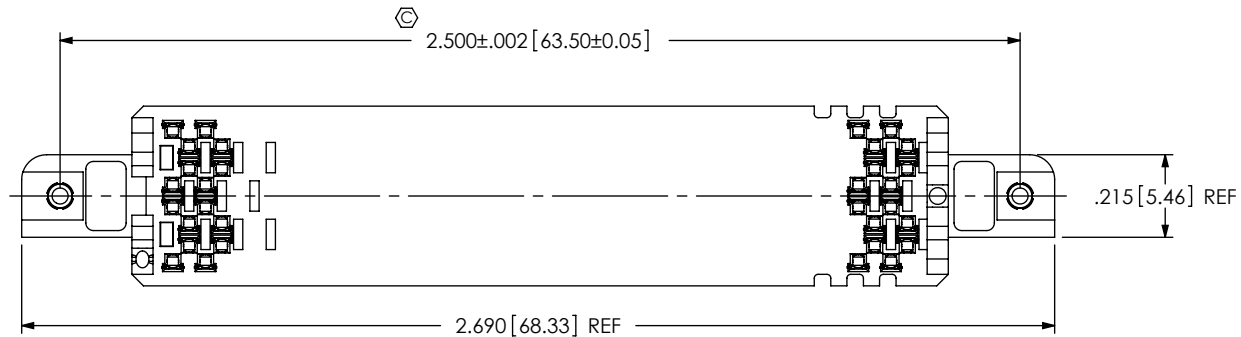
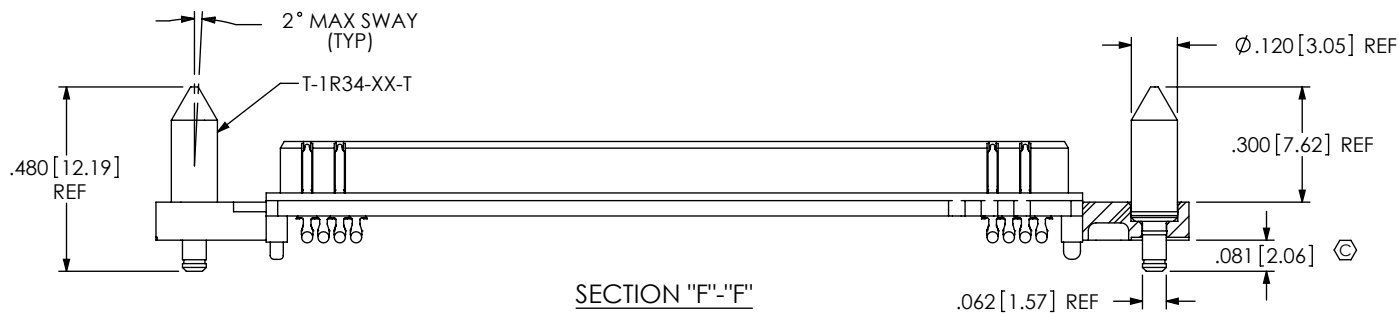
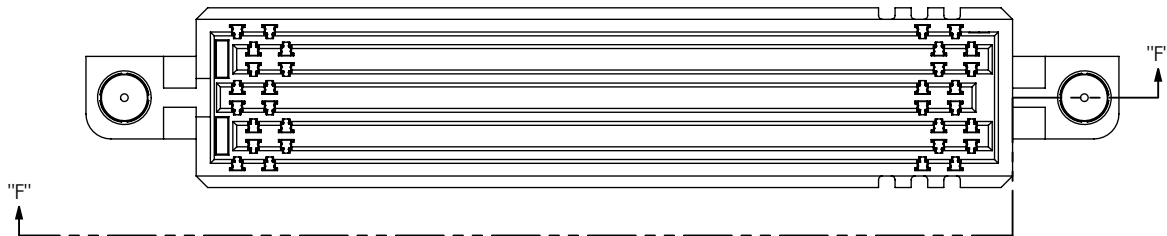
<p>PROPRIETARY NOTE THIS DOCUMENT CONTAINS INFORMATION CONFIDENTIAL AND PROPRIETARY TO SAMTEC, INC. AND SHALL NOT BE REPRODUCED OR TRANSFERRED TO OTHER DOCUMENTS OR DISCLOSED TO OTHERS OR USED FOR ANY PURPOSE OTHER THAN THAT WHICH IT WAS OBTAINED WITHOUT THE EXPRESSED WRITTEN CONSENT OF SAMTEC, INC.</p> <p>DO NOT SCALE DRAWING</p> <p>SHEET SCALE: 2:1</p>		
	<p>520 PARK EAST BLVD, NEW ALBANY, IN 47150 PHONE: 812-944-6733 FAX: 812-948-5047 e-Mail: info@SAMTEC.com code: 55322</p>	
	<p>DESCRIPTION: .085 PITCH DP TERMINAL ASSEMBLY</p>	
	<p>DWG. NO. DPAM-XX-07.0-X-X-X-XX</p>	
<p>BY: CHAD F 6/3/2003</p>		<p>SHEET 3 OF 4</p>

FIG 4

* DPAM-23-07.0-X-3-X-A-GP SHOWN
 (SAME AS FIG. 1, EXCEPT AS SHOWN)
 (ALL TERMINALS NOT SHOWN FOR CLARITY)
 (NOT AVAILABLE ON 8 ROW) (23 POSITION ONLY)
 * = NOT RELEASED FOR PRODUCTION



PROPRIETARY NOTE
 THIS DOCUMENT CONTAINS INFORMATION
 CONFIDENTIAL AND PROPRIETARY TO
 SAMTEC, INC. AND SHALL NOT BE REPRODUCED
 OR TRANSFERRED TO OTHER DOCUMENTS OR
 DISCLOSED TO OTHERS OR USED FOR ANY
 PURPOSE OTHER THAN THAT WHICH IT WAS
 OBTAINED WITHOUT THE EXPRESSED WRITTEN
 CONSENT OF SAMTEC, INC.

DO NOT SCALE DRAWING

SHEET SCALE: 2:1



520 PARK EAST BLVD., NEW ALBANY, IN 47150
 PHONE: 812-944-6733 FAX: 812-948-5047
 e-Mail: info@SAMTEC.com code: 55322

DESCRIPTION: .085 PITCH DP TERMINAL ASSEMBLY

DWG. NO. DPAM-XX-07.0-X-X-X-XX

BY: CHAD F 6/3/2003 SHEET 4 OF 4