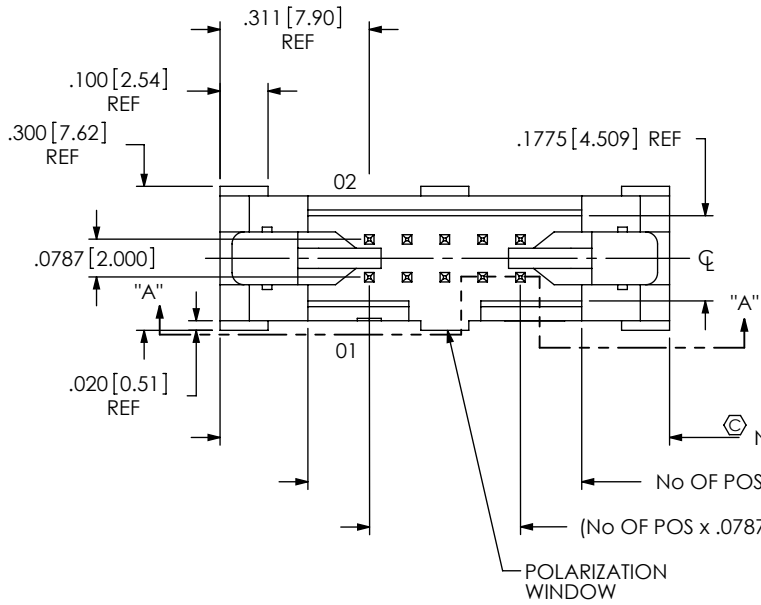


DO NOT SCALE FROM THIS PRINT



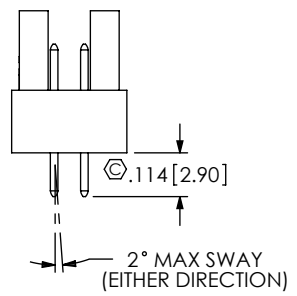
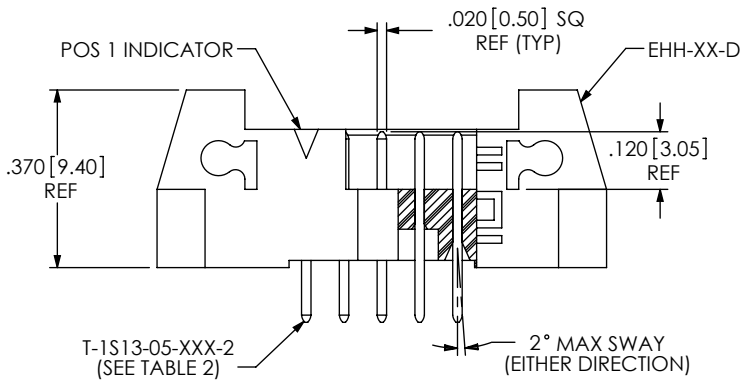
PLATING SPECIFICATION
 -S: 30µ" GOLD IN CONTACT AREA, MATTE TIN ON TAIL.
 -F: 3µ" GOLD IN CONTACT AREA, MATTE TIN ON TAIL.
 -T: MATTE TIN.
 -H: 30µ" GOLD IN CONTACT AREA, 3µ" GOLD ON TAIL.
 -L: 15µ" GOLD IN CONTACT AREA, MATTE TIN ON TAIL.
 -SM: 30µ" GOLD IN CONTACT AREA, MATTE TIN ON TAIL.
 -FM: 3µ" GOLD IN CONTACT AREA, MATTE TIN ON TAIL.
 -TM: MATTE TIN.
 -LM: 15µ" GOLD IN CONTACT AREA, MATTE TIN ON TAIL.

No OF POSITIONS
 -05 THRU -25
 LEAD STYLE
 -01

OPTION 3
 -TR: TAPE AND REEL PACKAGING (FOR -SM, -SM-P, AND -SM-K ONLY)
 OPTION 2
 -LC: LOCKING CLIP (SEE NOTE 4) (FOR -SM ONLY) (SEE FIG 4, SHT 2, USE LC-09-TM)
 OPTION 1
 -P: PICK & PLACE PAD (SEE FIG 5, SHT 2) (FOR -SM ONLY, USE PPP-24) (USE PPP-55 WITH -SM-TR OPTION)
 -K: OPTION (POLYIMIDE FILM, SEE FIG 3, SHT 2) (FOR -SM ONLY)
 POLARIZED OPTION
 -XX = PIN OMITTED
 TAIL OPTION
 -RA: RIGHT ANGLE (FIG 2, SHT 2)
 -SM: SURFACE MOUNT (SEE FIG 4, SHT 2) (LEAVE BLANK FOR THRU HOLE)
 ROW SPECIFICATION
 -D: DOUBLE

PIN	OAL
T-1S13-05-XX-2	0.397 [10.08]
T-1S13-06-XX-2	0.555 [14.10]
T-1S13-15-XX-2	0.714 [18.14]

FIG 1
 (EHT-105-01-XX-D SHOWN)
 (LATCH EHA-01 REMOVED FOR CLARITY)



ASSEMBLY OPERATION	IN-PROCESS INSPECTION
FILL T-1S13-05-XXX-2-TH	C1, C2
FORM T-1S13-06-XXX-2-SM	C5
FORM T-1S13-15-XXX-2-SM	C7
FORM T-1S13-05-XXX-2-SM	C4
REPRESS T-1S13-05-XXX-2-SM	C3, C6

- NOTES:
- ⊕ REPRESENTS A CRITICAL DIMENSION.
 - MINIMUM PUSHOUT FORCE: 1 LB.
 - MAXIMUM PIN ROTATION IN BODY: 2°
 - DUE TO THE HIGH AMOUNT OF INSERTION FORCE NEEDED, THE -LC OPTION IS NOT COMPATIBLE WITH AUTO PLACEMENT. SAMTEC RECOMMENDS MANUAL PLACEMENT FOR ALL ASSEMBLIES WITH THE -LC OPTION.

UNLESS OTHERWISE SPECIFIED, DIMENSIONS ARE IN INCHES.
 TOLERANCES ARE:
 DECIMALS ANGLES
 .XX: ±.01 [0.3] 2°
 .XXX: ±.005 [0.13]
 .XXXX: ±.0020 [0.051]

PROPRIETARY NOTE
 THIS DOCUMENT CONTAINS INFORMATION CONFIDENTIAL AND PROPRIETARY TO SAMTEC, INC. AND SHALL NOT BE REPRODUCED OR TRANSFERRED TO OTHER DOCUMENTS OR DISCLOSED TO OTHERS OR USED FOR ANY PURPOSE OTHER THAN THAT WHICH IT WAS OBTAINED WITHOUT THE EXPRESSED WRITTEN CONSENT OF SAMTEC, INC.



520 PARK EAST BLVD, NEW ALBANY, IN 47150
 PHONE: 812-944-6733 FAX: 812-948-5047
 e-Mail: info@SAMTEC.com code: 55322

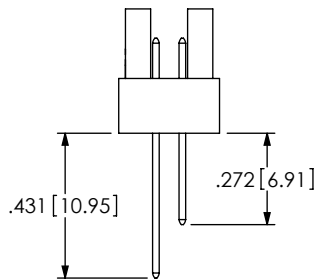
MATERIAL: DO NOT SCALE DRAWING SHEET SCALE: 2:1
 INSULATOR: LCP, UL 94 VO, COLOR: BLACK
 TERMINAL: PHOS BRONZE

DESCRIPTION:
2MM EJECTOR HEADER ASSEMBLY

DWG. NO.
EHT-1XX-01-XX-D-XX-XX-X-XX-XX

BY: PURVIS 02/28/1994 SHEET 1 OF 3

REVISION AZ



-RA IN PROCESS

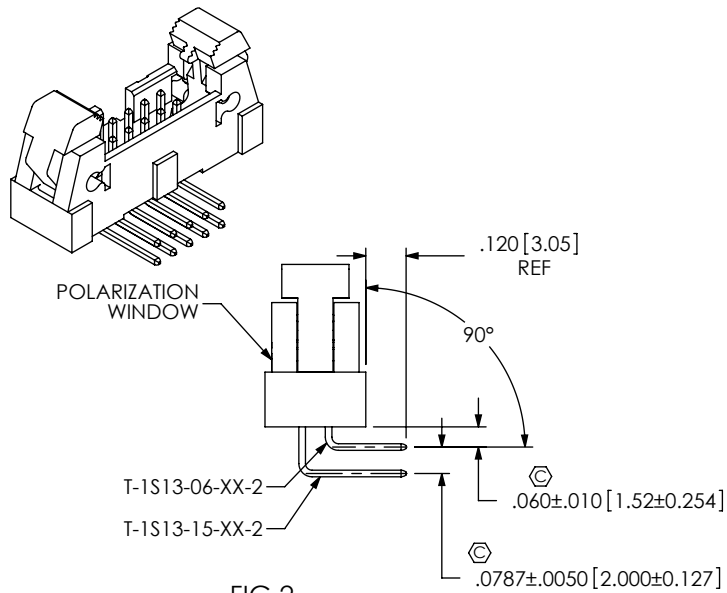
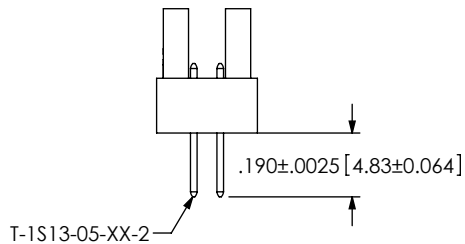
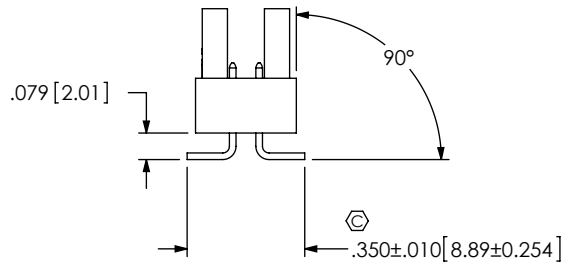


FIG 2
(EHT-1XX-01-XX-D-RA SHOWN)
RIGHT ANGLE
(DIFFERENT AS SHOWN, OTHERWISE SAME AS FIG 1)



-SM IN-PROCESS 1



-SM IN-PROCESS 2

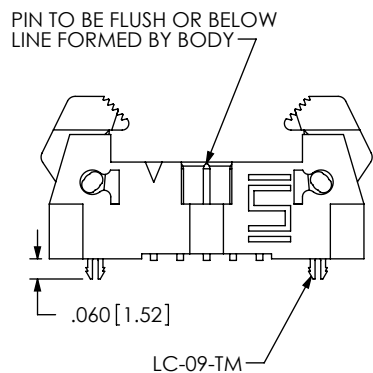
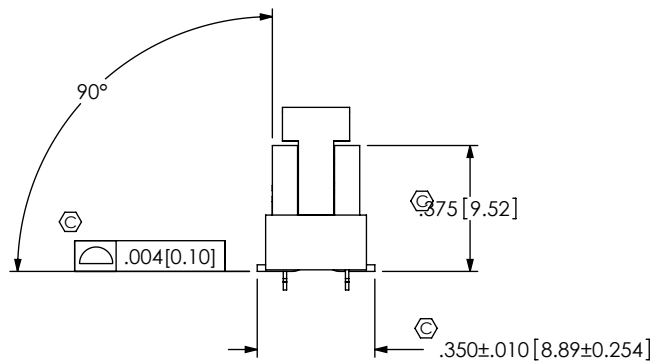
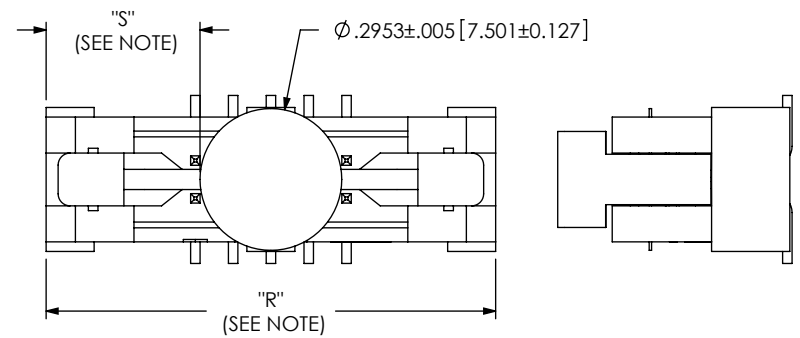


FIG 4
(EHT-105-01-XX-D-SM-LC SHOWN)
SURFACE MOUNT VERSION
(DIFFERENT AS SHOWN, OTHERWISE SAME AS FIG 1)



F:\DWG\MISC\MKTG\EHT-1XX-01-XX-D-XX-XX-X-XX-MKT.SLDDRW



NOTE: "R" = USE MEASURED DIMENSION (REF)
"S" = {"R" - .2953[7.50]/2} ± .020[0.51]

FIG 3
(EHT-105-01-XX-D-SM-K SHOWN)
-K OPTION (POLYIMIDE FILM PAD)
(DIFFERENT AS SHOWN, OTHERWISE SAME AS FIG 1)

NOTE: "R" = USE MEASURED DIMENSION (REF)
"S" = {"R" - .325[8.26]/2} ± .020[0.51]

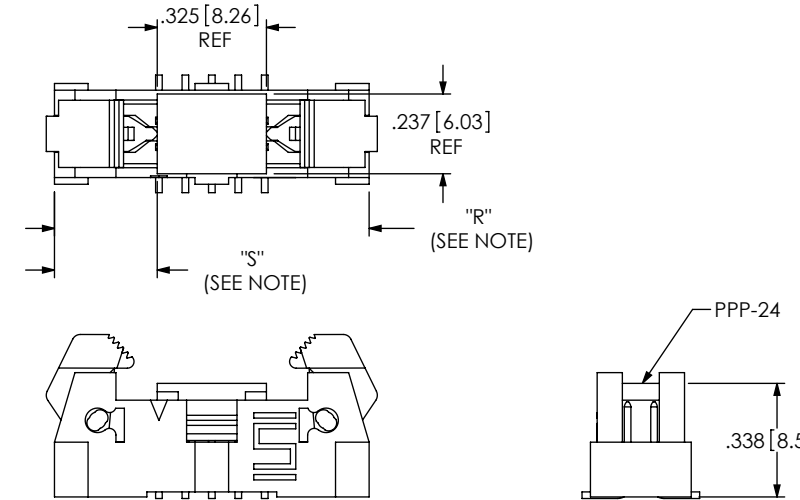


FIG 5
(EHT-105-01-XX-D-SM-P SHOWN)
PICK AND PLACE PAD
(DIFFERENT AS SHOWN, OTHERWISE SAME AS FIG 1)

PROPRIETARY NOTE

THIS DOCUMENT CONTAINS INFORMATION CONFIDENTIAL AND PROPRIETARY TO SAMTEC, INC. AND SHALL NOT BE REPRODUCED OR TRANSFERRED TO OTHER DOCUMENTS OR DISCLOSED TO OTHERS OR USED FOR ANY PURPOSE OTHER THAN THAT WHICH IT WAS OBTAINED WITHOUT THE EXPRESSED WRITTEN CONSENT OF SAMTEC, INC.

DO NOT SCALE DRAWING

SHEET SCALE: 1:0.571429

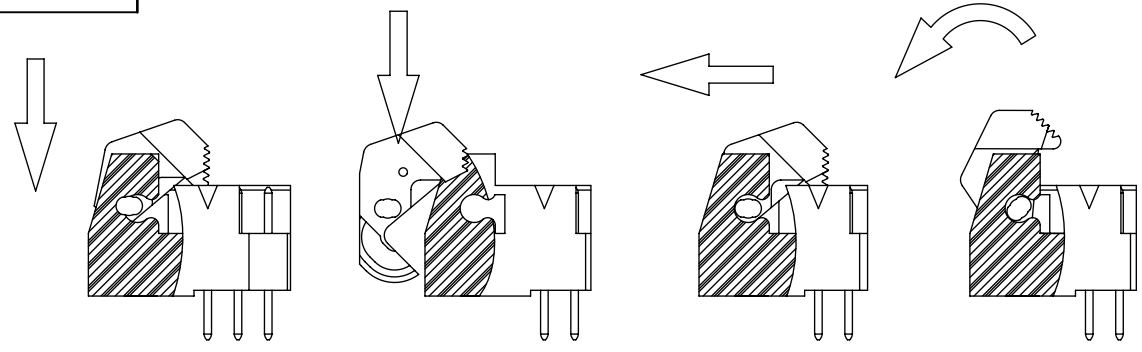
samtec

520 PARK EAST BLVD, NEW ALBANY, IN 47150
PHONE: 812-944-6733 FAX: 812-948-5047
e-Mail: info@SAMTEC.com code: 55322

DESCRIPTION:
2MM EJECTOR HEADER ASSEMBLY

DWG. NO.
EHT-1XX-01-XX-D-XX-XX-X-XX-XX

BY: PURVIS 02/28/1994 SHEET 2 OF 3



IN-PROCESS
ARM ASSEMBLY & ROTATION

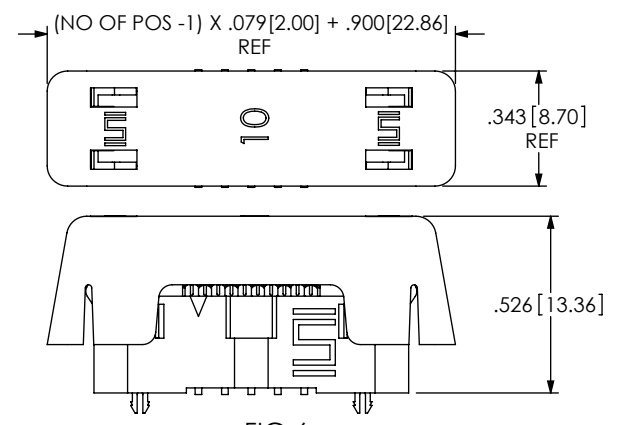


FIG 6
APPLICATION VIEW
EHT MATED TO TCSD AND ECF

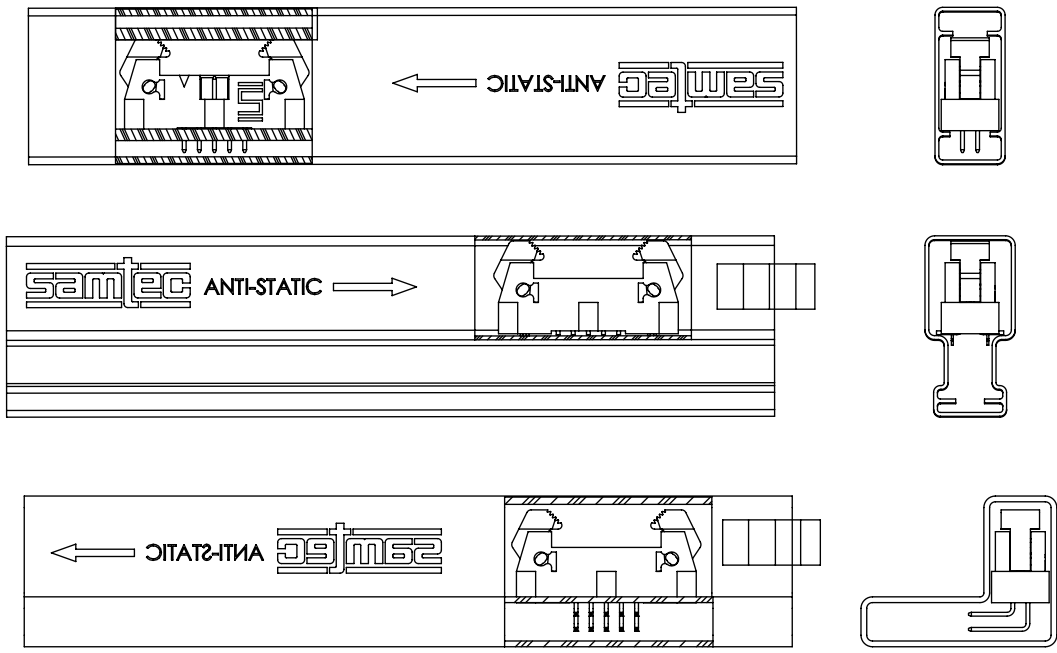
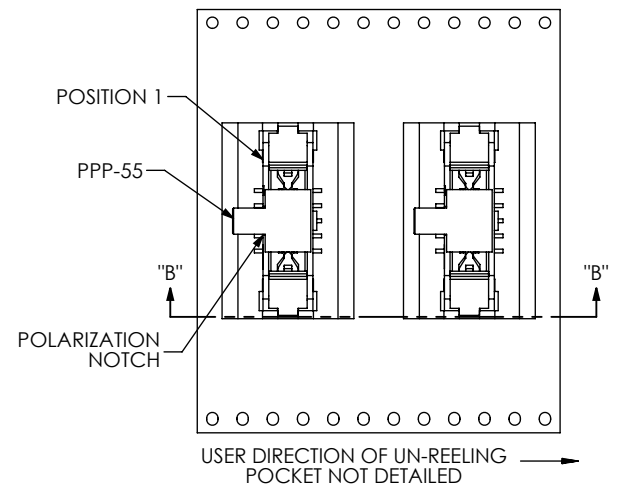


FIG 7
PACKAGING VIEWS



SECTION "B"-"B"
SCALE 1 : 1

TABLE 1		
STYLE	TUBE	PLUG
STRAIGHT	PT-1-24-16-29	TP-13
RIGHT ANGLE	ASP-90341-01-S	TP-13
SURFACE MOUNT	PT-1-24-01-44	TP-13

PROPRIETARY NOTE
THIS DOCUMENT CONTAINS INFORMATION CONFIDENTIAL AND PROPRIETARY TO SAMTEC, INC. AND SHALL NOT BE REPRODUCED OR TRANSFERRED TO OTHER DOCUMENTS OR DISCLOSED TO OTHERS OR USED FOR ANY PURPOSE OTHER THAN THAT WHICH IT WAS OBTAINED WITHOUT THE EXPRESSED WRITTEN CONSENT OF SAMTEC, INC.

DO NOT SCALE DRAWING
SHEET SCALE: 2:1

samtec
520 PARK EAST BLVD, NEW ALBANY, IN 47150
PHONE: 812-944-6733 FAX: 812-948-5047
e-Mail: info@SAMTEC.com code: 55322

DESCRIPTION:
2MM EJECTOR HEADER ASSEMBLY

DWG. NO.
EHT-1XX-01-XX-D-XX-XX-X-XX-XX

BY: PURVIS 02/28/1994 SHEET 3 OF 3