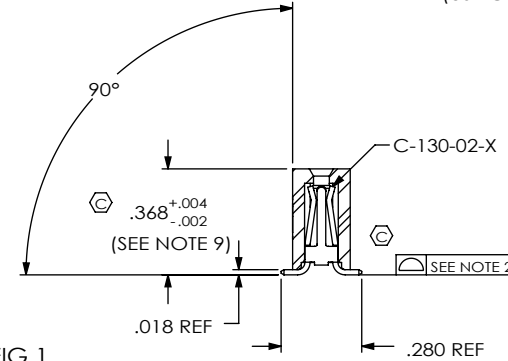
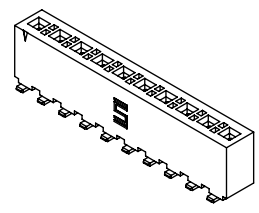
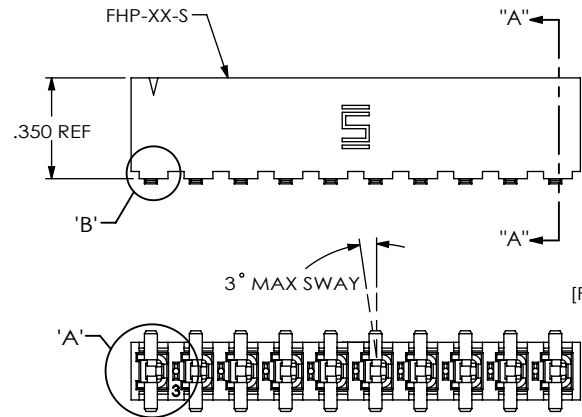
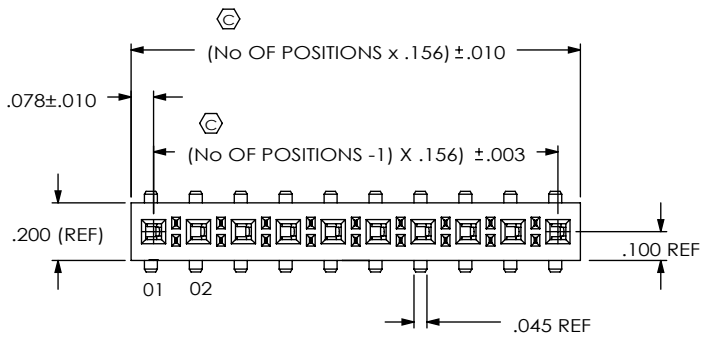


DO NOT SCALE FROM THIS PRINT



FHP-XX-XX-XX-S-XX-XX

- No OF POSITIONS**
-02 THRU -24 (PER ROW)
[SEE POSITIONAL FILL VIEW]
- LEAD STYLE**
-01: THROUGH HOLE (USE C-130-01-X)
-02: SURFACE MOUNT (USE C-130-02-X)
- OPTION**
-TR: TAPE & REEL PACKAGING (T&R AVAILABLE FOR 2 THRU 18 POS) (SEE NOTES 6 & 10)
- OPTION**
-LC: LOCKING CLIP (USE LC-05-TM) (-02 LEAD STYLE ONLY, SEE NOTE 11)
-A: ALIGNMENT PIN (USE FHP-XX-S-A) (SEE FIG 2) (-02 LEAD STYLE ONLY)
-K: POLYIMIDE FILM PAD (SEE FIG 3, SHT. 2) (USE K-500-300) (-02 LEAD STYLE ONLY) (AVAILABLE ON POSITIONS 2-24, 2-4 POSITIONS MUST BE IN -TR)
- ROW SPECIFICATION**
-S: SINGLE (USE FHP-XX-S)

- PLATING SPECIFICATION**
-T: MATTE TIN CONTACT AND TAIL (USE C-130-XX-T)
-TM: MATTE TIN CONTACT AND TAIL (USE C-130-XX-T)
-H: 30µ" GOLD IN CONTACT AREA, 3µ" GOLD ON TAIL (USE C-130-XX-H)

FIG 1 [FHP-10-02-X-S SHOWN]

SECTION "A"-"A" STYLE -02

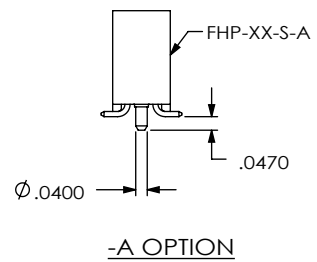
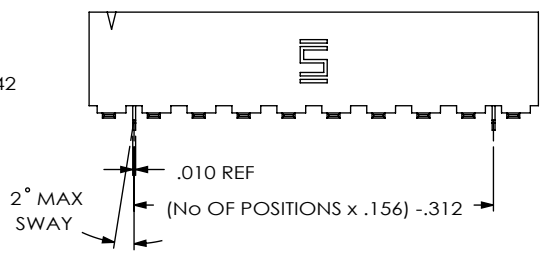
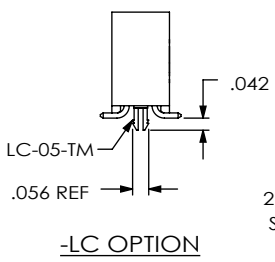
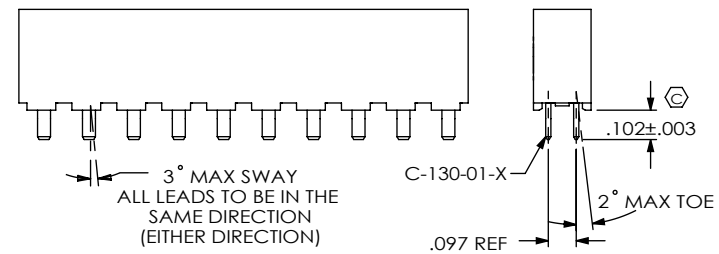
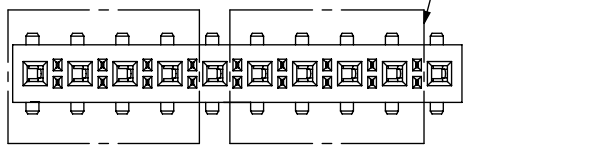


FIG 2 -LC & -A OPTIONS [-LC & -A OPTIONS ONLY AVAILABLE ON -02 LEAD STYLE] (SAME AS FIG 1, UNLESS OTHERWISE STATED)

NOTES:

1. REPRESENTS A CRITICAL DIMENSION.
2. COPLANARITY TO BE WITHIN .006".
3. BURR ALLOWANCE: .0015 MAX.
4. MAXIMUM CUT FLASH: .020.
5. MINIMUM PUSHOUT FORCE: 1.0 LB.
6. LAYER PACKAGE STYLE -01 & -02, POSITIONS 02 - 04 WITH NO OPTIONS ONLY.
7. OPEN PART OF CONTACT FILLED TOWARDS #1 PIN INDICATOR
8. MINIMUM WALL THICKNESS TO BE .010".
9. MEASURED @ BEND.
10. TUBE PACKAGING AVAILABLE FOR 5 THRU 24 POSITIONS.
11. DUE TO THE HIGH AMOUNT OF INSERTION FORCE NEEDED, THE -LC OPTION IS NOT COMPATIBLE WITH AUTO PLACEMENT. SAMTEC RECOMMENDS MANUAL PLACEMENT FOR ALL ASSEMBLIES WITH THE -LC OPTION

POSITIONAL FILL VIEW



4 POSITION SHOWN [PRIOR TO CUT-TO-POSITION OPERATION]

UNLESS OTHERWISE SPECIFIED, DIMENSIONS ARE IN INCHES. TOLERANCES ARE:
DECIMALS ANGLES
.XX: ±.01 2°
.XXX: ±.005
.XXXX: ±.0020

PROPRIETARY NOTE
THIS DOCUMENT CONTAINS INFORMATION CONFIDENTIAL AND PROPRIETARY TO SAMTEC, INC. AND SHALL NOT BE REPRODUCED OR TRANSFERRED TO OTHER DOCUMENTS OR DISCLOSED TO OTHERS OR USED FOR ANY PURPOSE OTHER THAN THAT WHICH IT WAS OBTAINED WITHOUT THE EXPRESSED WRITTEN CONSENT OF SAMTEC, INC.



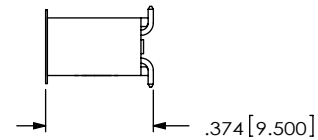
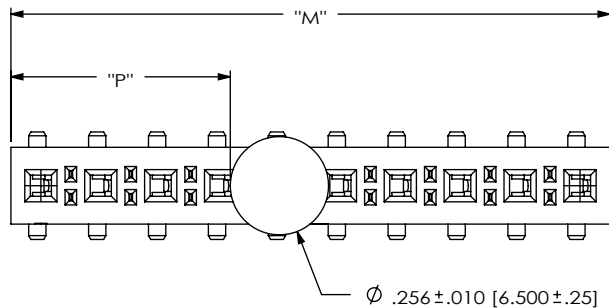
520 PARK EAST BLVD, NEW ALBANY, IN 47150
PHONE: 812-944-6733 FAX: 812-948-5047
e-Mail: info@SAMTEC.com code: 55322

MATERIAL: DO NOT SCALE DRAWING SHEET SCALE: 1.5:1
MATERIAL: VECTRA E130i
COLOR: BLACK
CONTACT: BeCu, 174HT

DESCRIPTION: .156 HI POWER SOCKET ASSEMBLY

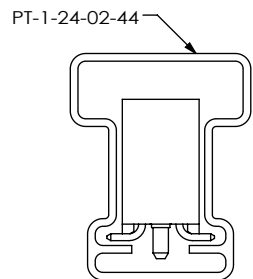
DWG. NO. FHP-XX-XX-XX-S-XX-XX

BY: BRATCHER 03/01/99 SHEET 1 OF 2

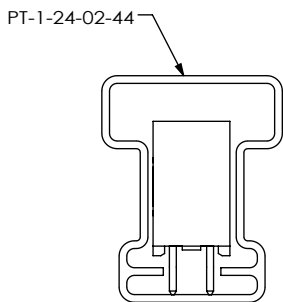


NOTE: "M" = USED MEASURED DIMENSION (REF)
 "P" = $\{("M" - .256 [6.50]) / 2\} \pm .020 [.51]$

FIG 3
 -K: POLYIMIDE FILM PAD OPTION
 (SHOWN: FHP-10-02-X-S-K)



STYLE -02
 (WITH ALIGNMENT PIN)

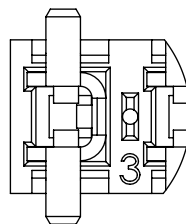


STYLE -01

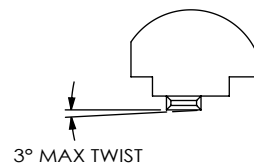
(TUBE PACKAGING AVAILABLE FOR 5 THRU 24 POS)
 (TUBE PACKAGE THE PARTS WITH #1 PIN TOWARDS ARROW)

PACKAGING TABLE

LEAD STYLE	OPTIONS	PACKAGING TUBE	PLUG
-01	ALL OPTIONS	PT-1-24-02-44	TP-03
-02	ALL OPTIONS	PT-1-24-02-44	TP-03



DETAIL 'A'
 SCALE 4 : 1
 (SHOWN FOR CONTACT ORIENTATION)



DETAIL 'B'
 SCALE 4 : 1

F:\DWG\MISC\MKTG\FHP-XX-XX-XX-S-XX-XX-MKT.SLDDRW

PROPRIETARY NOTE

THIS DOCUMENT CONTAINS INFORMATION CONFIDENTIAL AND PROPRIETARY TO SAMTEC, INC. AND SHALL NOT BE REPRODUCED OR TRANSFERRED TO OTHER DOCUMENTS OR DISCLOSED TO OTHERS OR USED FOR ANY PURPOSE OTHER THAN THAT WHICH IT WAS OBTAINED WITHOUT THE EXPRESSED WRITTEN CONSENT OF SAMTEC, INC.

DO NOT SCALE DRAWING

SHEET SCALE: 1:0.666667



520 PARK EAST BLVD, NEW ALBANY, IN 47150
 PHONE: 812-944-6733 FAX: 812-948-5047
 e-Mail: info@SAMTEC.com code: 55322

DESCRIPTION: .156 HI POWER SOCKET ASSEMBLY

DWG. NO. FHP-XX-XX-XX-S-XX-XX

BY: BRATCHER 03/01/99 SHEET 2 OF 2