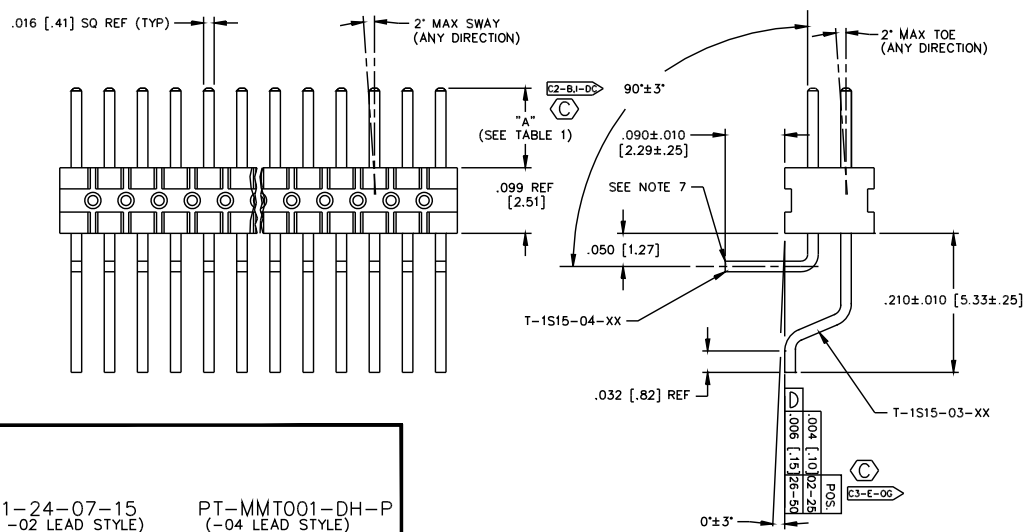
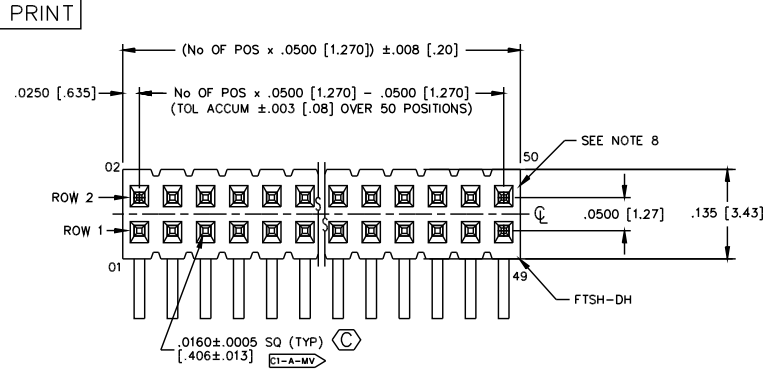
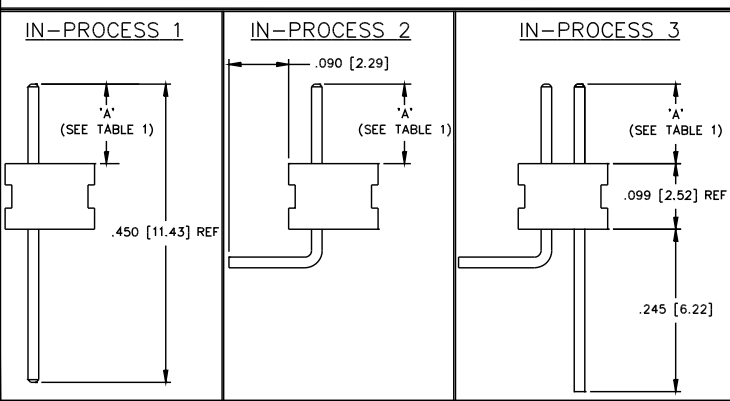
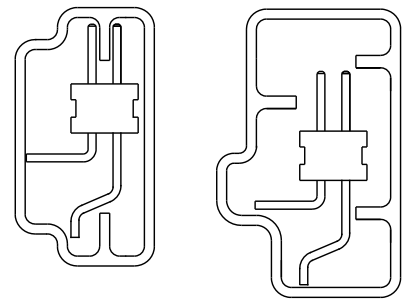


DO NOT SCALE FROM THIS PRINT



PT-1-24-07-15 (-01, -02 LEAD STYLE) TUBE TO USE (2) TP-03  
 PT-MMT001-DH-P (-04 LEAD STYLE) TUBE TO USE (2) TP-09



FTSH-1XX-XX-XX-MT-XX  
 No OF POS PER ROW  
 -02 THRU -50 (SEE NOTE 2 & 5)  
 LEAD STYLE  
 -01: "A" = .120 [3.05]  
 -02: "A" = .075 [1.91]  
 -04: "A" = .150 [3.81]  
 (SEE TABLE 1 FOR TERMINAL USAGE)  
 PACKAGING  
 -TR: TAPE AND REEL  
 DOUBLE MIXED TECHNOLOGY  
 PLATING [R]  
 -L: 10µ" LIGHT SELECTIVE GOLD IN CONTACT AREA, MATTE TIN ON TAIL  
 -F: 3µ" FLASH SELECTIVE GOLD IN CONTACT AREA, MATTE TIN ON TAIL  
 -S: 30µ" SELECTIVE GOLD IN CONTACT AREA, MATTE TIN ON TAIL  
 -H: 30µ" HEAVY GOLD IN CONTACT AREA, 3µ" GOLD ON TAIL  
 -SM: 30µ" HEAVY SELECTIVE GOLD IN CONTACT AREA, MATTE TIN ON TAIL  
 -LM: 10µ" LIGHT SELECTIVE GOLD IN CONTACT AREA, MATTE TIN ON TAIL  
 -FM: 3µ" FLASH SELECTIVE GOLD IN CONTACT AREA, MATTE TIN ON TAIL  
 -TM: MATTE TIN ON CONTACT AND TAIL

CRITICAL DIMENSION INSPECTION TABLE	
ASSEMBLY OPERATION	IN-PROCESS INSPECTION
FILL T-1S15	C1, C2

- NOTES:  
 1. TERMINALS TO BE SHEARED TO MEET DIMENSION SPECIFICATION.  
 2. PARTS MAY BE CUT TO POSITION.  
 3. MINIMUM PUSHOUT FORCE: .5 LB.  
 4. MAXIMUM TOP / BOTTOM BOW: .004 [.10].  
 5. SEE PACKAGING TABLE 2.  
 6. [C] REPRESENTS A CRITICAL DIMENSION  
 7. .002 MAX BURR ALLOWED.  
 8. .015 MAX CUT FLASH ALLOWED.  
 9. PINS 2 TO BE FLUSH TO .003 ABOVE OR BELOW LINE MADE BY BODY.

TABLE 1			
LEAD STYLE	"A"	ROW 1	ROW 2
-01	.120 ± .005 [3.05 ± .13]	T-1S15-04-XX	T-1S15-03-XX
-02	.075 ± .005 [1.91 ± .13]	T-1S15-04-XX	T-1S15-03-XX
-04	.150 ± .005 [3.81 ± .13]	T-1S15-04-XX	T-1S15-03-XX

TABLE 2		
LEAD STYLE	NO. OF POS	PACKAGING
-01	-02 THRU -04	TAPE & REEL
-01	-05 THRU -50	PT-1-24-07-15
-02	-02 THRU -05	TAPE & REEL
-02	-06 THRU -50	PT-1-24-07-15
-04	-02 THRU -03	TAPE & REEL
-04	-04 THRU -50	PT-MMT001-DH-P

**PROPRIETARY NOTE**  
 THIS DOCUMENT CONTAINS INFORMATION CONFIDENTIAL AND PROPRIETARY TO SAMTEC INC. AND SHALL NOT BE REPRODUCED OR TRANSFERRED TO OTHER DOCUMENTS OR DISCLOSED TO OTHERS OR USED FOR ANY PURPOSE OTHER THAN THAT FOR WHICH IT WAS OBTAINED WITHOUT THE EXPRESSED WRITTEN CONSENT OF SAMTEC INC.

MISC#10  
 FTSH-1XX-XX-XX-MT

**samtec**

520 PARK EAST BLVD. NEW ALBANY, INDIANA 47150  
 PHONE (812) 944-6733 P.O. BOX 1147  
 CODE 55322

MADE BY:  
 PURVIS 07-29-96 FTSH-1XX-XX-XX-MT-XX  
 SHEET 1 OF 1