

DO NOT SCALE FROM THIS PRINT

TABLE 1						
STYLE	TERMINAL	"B" POST	"L" LENGTH	-RA ONLY		
				"C"	"D"	"E"
-01	T-1S8-01-TX	.450 [11.43]	.750 [19.05]	N/R	N/R	
-02	T-1S8-02-TX	.500 [12.70]	.800 [20.32]	.100 [2.54]	.175 [4.45]	.320 [8.13] REF
-03	T-1S8-03-TX	.674 [17.12]	.955 [24.26]	** .195 [4.95]	** .156 [3.96]	** .320 [8.13] REF
-04	T-1S8-04-TX	.809 [20.55]	1.090 [27.69]	.195 [4.95]	.156 [3.96]	.534 [13.46] REF
-05	T-1S8-11-TX	.150 [3.81]	.750 [19.05]	N/R	N/R	N/R
-06	T-1S8-05-TX	1.050 [26.67]	1.350 [34.29]	N/R	N/R	N/R

\*\*=NOT RELEASED FOR PRODUCTION.

FWJ-XX-XX-TX-S-XX

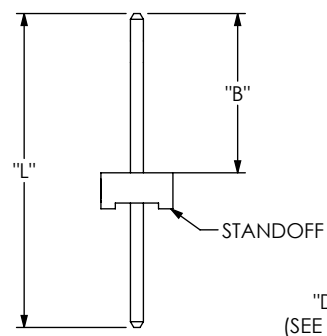
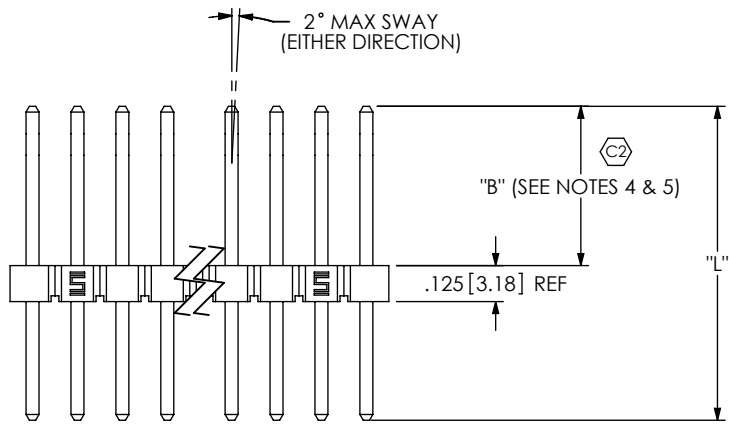
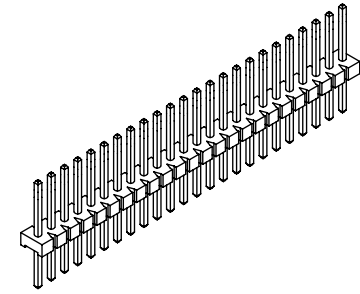
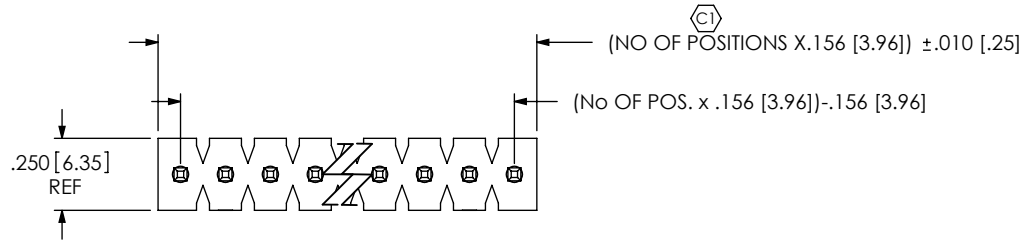
No OF POSITIONS  
-01 THRU -23  
-24 = SEE FSW-24-156

LEAD STYLE  
SEE TABLE 1

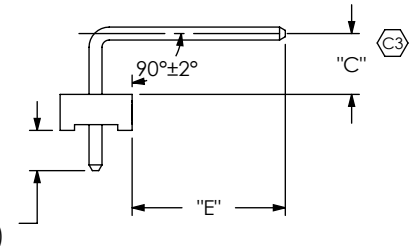
OPTION  
-RA: RIGHT ANGLE

BODY SPECIFICATION  
USE FSW-24-156

PLATING SPECIFICATION  
-T: MATTE TIN CONTACT AND TAIL  
-TM: MATTE TIN CONTACT AND TAIL



-RA  
IN-PROCESS VIEW



-RA  
-02 & -04 ONLY

NOTES:

1. (C) REPRESENTS A CRITICAL DIMENSION.
2. MIN PUSHOUT FORCE: 3 LBS.
3. MAX ALLOWABLE BOW AFTER ASSEMBLY: .003 [.08] INCH/INCH
4. HEIGHT VARIATION BETWEEN PINS SHALL BE .005 [.13] MAX
5. BANDOLIER AREA TO BE POSITIONED ABOUT OR TOWARDS STANDOFF SIDE OF BODY. ENTIRE BANDOLIER AREA MUST NOT BE LOCATED IN THIS AREA.
6. MAX CUT FLASH: .020 [.51]

UNLESS OTHERWISE SPECIFIED, DIMENSIONS ARE IN INCHES. TOLERANCES ARE:  
DECIMALS ANGLES  
.XX: ±.01 [.3] 1°  
.XXX: ±.005 [.13]  
.XXXX: ±.0020 [.051]

PROPRIETARY NOTE  
THIS DOCUMENT CONTAINS INFORMATION CONFIDENTIAL AND PROPRIETARY TO SAMTEC, INC. AND SHALL NOT BE REPRODUCED OR TRANSFERRED TO OTHER DOCUMENTS OR DISCLOSED TO OTHERS OR USED FOR ANY PURPOSE OTHER THAN THAT WHICH IT WAS OBTAINED WITHOUT THE EXPRESSED WRITTEN CONSENT OF SAMTEC, INC.



520 PARK EAST BLVD. NEW ALBANY, IN 47150  
PHONE: 812-944-6733 FAX: 812-948-5047  
e-Mail: info@SAMTEC.com code 55322

DO NOT SCALE DRAWING SHEET SCALE: 1.5:1  
MATERIAL: INSULATOR: PBT, UL 94 VO COLOR: BLACK  
TERMINAL: PIN STYLES -01 THRU -05: PHOS BRONZE  
PIN STYLE -11: CDA 7025  
C:\EnterpriseVault\DWG\MISC\MKTG\FWJ-XX-XX-TX-S-XX-MKT.SLDDRW

DESCRIPTION: .045 SQ POST ASSEMBLY  
DWG. NO. FWJ-XX-XX-TX-S-XX  
BY: DEAN PURVIS 2-19-86 SHEET 1 OF 1