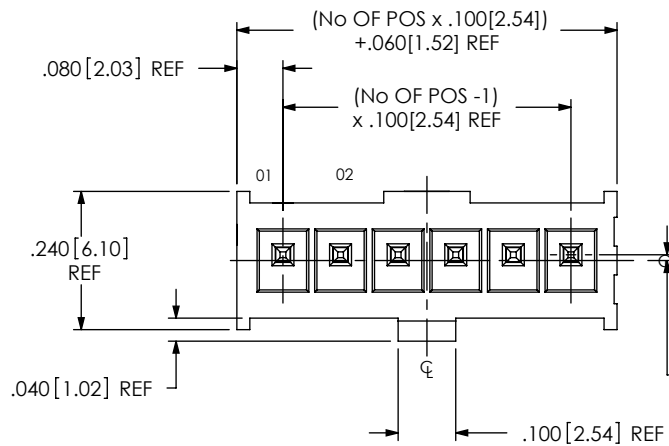


DO NOT SCALE FROM THIS PRINT



IPL1-1XX-XX-XXX-S-XX-X

No OF POSITIONS  
-02 THRU -25

LEAD STYLE

-01: THROUGH HOLE (USE T-1S64-XX-XX)  
-02: SURFACE MOUNT (SEE FIG. 2, SHT 2) (USE T-1S64-XX-XX)

POLARIZATION OPTION

-K: KEYED POLARIZATION (USE IPL1-XX-S-K) (SEE FIG. 4, SHEET 3) (LEAVE BLANK FOR NO POLARIZATION, SAMTEC WILL ONLY SUPPORT EXISTING BUSINESS AS OF REV J)

OPTION

-RA: RIGHT ANGLE (SEE FIG. 3, SHT 3) (AVAILABLE WITH -01 LEAD STYLE ONLY)

ROW SPECIFICATION

-S: SINGLE (USE IPL1-XX-S)

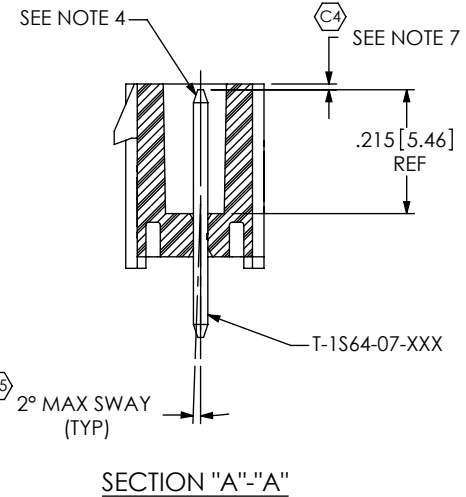
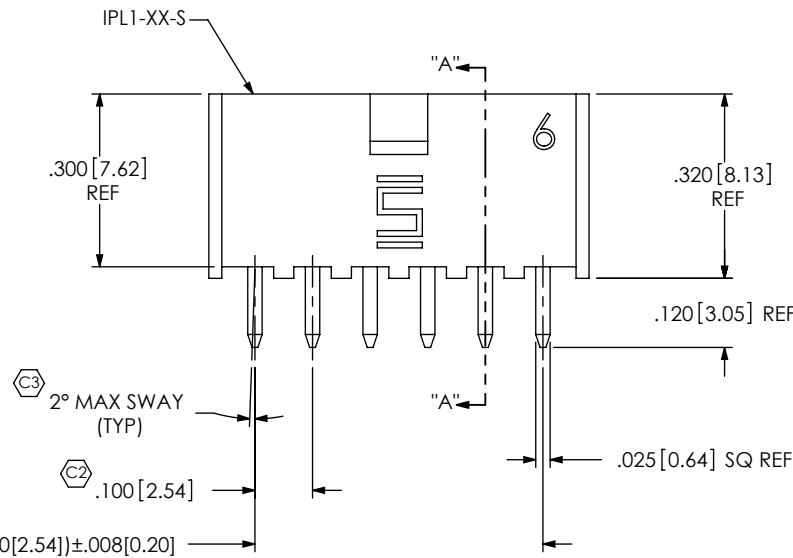
PLATING SPECIFICATION

-F: FLASH SELECTIVE (USE T-1S64-XX-F)  
-L: LIGHT SELECTIVE (USE T-1S64-XX-L)  
-S: SELECTIVE (USE T-1S64-XX-S)  
-H: HEAVY GOLD (USE T-1S64-XX-H)  
-FM: FLASH SELECTIVE/MATTE TIN TAILS (USE T-1S64-XX-F)  
-LM: LIGHT SELECTIVE/MATTE TIN TAILS (USE T-1S64-XX-L)  
-SM: SELECTIVE/MATTE TIN TAILS (USE T-1S64-XX-S)  
-STL: LIGHT SELECTIVE TIN/LEAD (USE T-1S64-XX-STL)

.010 [0.25] REF  
TERMINAL OFFSET FOR POLARIZATION

FIG 1

IPL1-106-01-XXX-S SHOWN



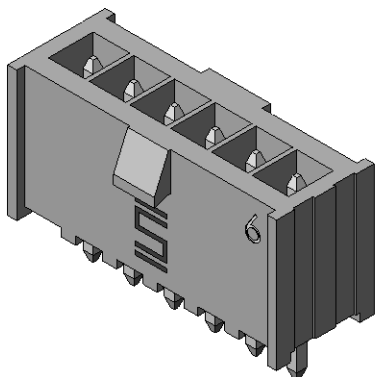
SECTION "A"-A"

TABLE 1

LEAD STYLE	OPTION	TERMINAL 1	OAL REF
-01	NONE	T-1S64-07-XX	.430 [10.92]
-01	-RA	T-1S64-19-XX	.545 [13.84]
-02	NONE	T-1S64-08-XX	.445 [11.30]

NOTES:

1.  $\text{C}$  REPRESENTS A CRITICAL DIMENSION.
2. MINIMUM TERMINAL RETENTION: 1 LB [4.45 N].
3. PARTS TO BE MOLDED TO POSITION.
4. POST MUST BE WITHIN .005 [0.13] OF EACH OTHER.
5. ALL PIN TO PIN DIMENSIONS TO BE MEASURED FROM TIP TO TIP.
6. DIMENSION TO BE MEASURED AT BEND.
7. TIP TO BE FLUSH TO .015 [0.38] BELOW TOP OF SHROUD.
8. NOTE DELETED.
9. PACKAGE ALL POSITIONS.



UNLESS OTHERWISE SPECIFIED, DIMENSIONS ARE IN INCHES. TOLERANCES ARE:  
DECIMALS ANGLES  
.XX: ±.01 [0.3] ± 2°  
.XXX: ±.005 [0.13]  
.XXXX: ±.0020 [0.051]

PROPRIETARY NOTE

THIS DOCUMENT CONTAINS INFORMATION CONFIDENTIAL AND PROPRIETARY TO SAMTEC, INC. AND SHALL NOT BE REPRODUCED OR TRANSFERRED TO OTHER DOCUMENTS OR DISCLOSED TO OTHERS OR USED FOR ANY PURPOSE OTHER THAN THAT WHICH IT WAS OBTAINED WITHOUT THE EXPRESSED WRITTEN CONSENT OF SAMTEC, INC.



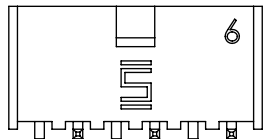
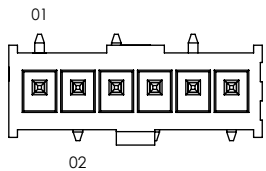
520 PARK EAST BLVD, NEW ALBANY, IN 47150  
PHONE: 812-944-6733 FAX: 812-948-5047  
e-Mail info@SAMTEC.com code 55322

MATERIAL: DO NOT SCALE DRAWING SHEET SCALE: 3:1  
STANDARD INSULATOR: LCP UL94-V0, COLOR: BLACK  
-K INSULATOR: LCP UL94-V0, COLOR: NATURAL  
TERMINAL: PHOS BRONZE

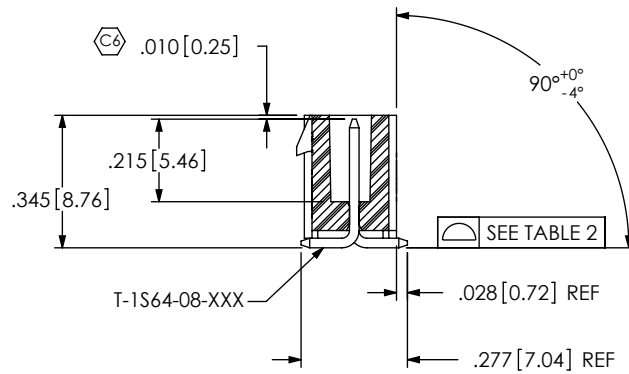
DESCRIPTION:  
.100 [2.54] SINGLE ROW TERMINAL ASSEMBLY

DWG. NO.  
**IPL1-1XX-XX-XXX-S-XX-X**

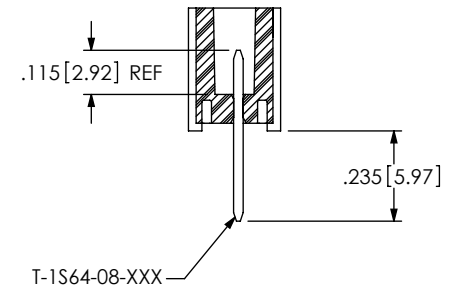
BY: D PURVIS 05/02/2005 SHEET 1 OF 3



**FIG 2**  
**STYLE -02: SURFACE MOUNT**  
 IPL1-106-02-XXX-S SHOWN  
 [DIFFERENT AS SHOWN, OTHERWISE SAME AS FIG 1]



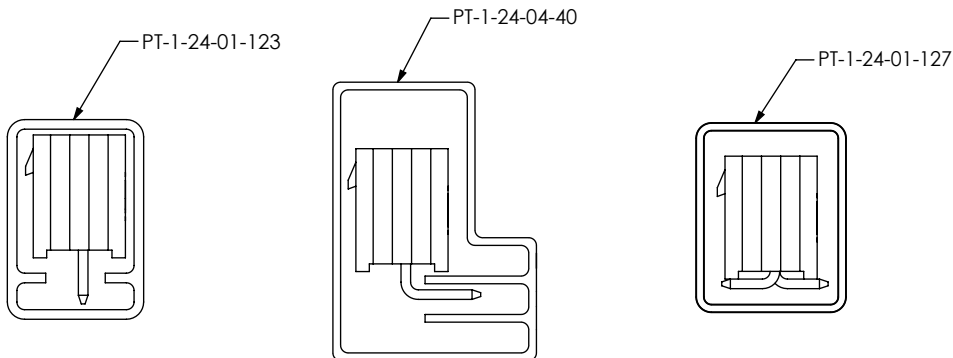
-02: SURFACE MOUNT IN-PROCESS 1



**TABLE 2**

No OF POS.	COPLANARITY
-02 THRU -05	.004[0.10]
-06 THRU -10	.005[0.13]

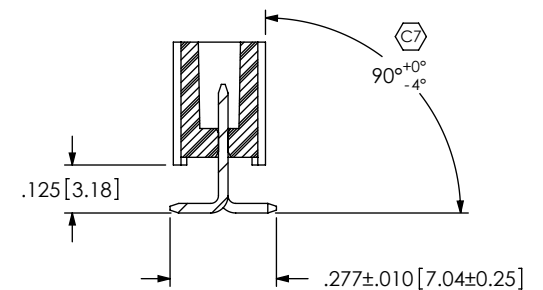
**PACKAGING VIEWS**  
 (PARTS TO HAVE POSITION #1 LOADED  
 IN SAME DIRECTION AS ARROW ON TUBE)



**PACKAGING TABLE**

LEAD STYLE	OPTION	PACKAGING TUBE	PLUG
-01	NONE	PT-1-24-01-123	TP-09
-01	-RA	PT-1-24-04-40	TP-07
-02	NONE	PT-1-24-01-127	TP-07

-02: SURFACE MOUNT IN-PROCESS 2



F:\DWG\MISC\MKTG\IPL1-1XX-XX-XXX-S-XX-X-MKT.SLDDRW

**PROPRIETARY NOTE**

THIS DOCUMENT CONTAINS INFORMATION CONFIDENTIAL AND PROPRIETARY TO SAMTEC, INC. AND SHALL NOT BE REPRODUCED OR TRANSFERRED TO OTHER DOCUMENTS OR DISCLOSED TO OTHERS OR USED FOR ANY PURPOSE OTHER THAN THAT WHICH IT WAS OBTAINED WITHOUT THE EXPRESSED WRITTEN CONSENT OF SAMTEC, INC.

DO NOT SCALE DRAWING

SHEET SCALE: 2:1



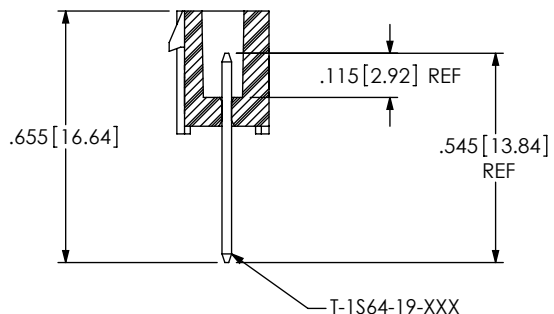
520 PARK EAST BLVD, NEW ALBANY, IN 47150  
 PHONE: 812-944-6733 FAX: 812-948-5047  
 e-Mail info@SAMTEC.com code 55322

DESCRIPTION:  
 .100[2.54] SINGLE ROW TERMINAL ASSEMBLY

DWG. NO.  
**IPL1-1XX-XX-XXX-S-XX-X**

BY: D PURVIS 05/02/2005 SHEET 2 OF 3

-RA: IN-PROCESS 1



-RA: IN-PROCESS 2

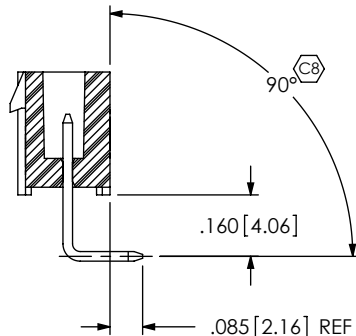


FIG. 4  
-K: KEYED POLARIZATION  
(IPL1-106-01-XXX-S-K SHOWN)  
(SAME AS FIG 1 UNLESS OTHERWISE STATED)

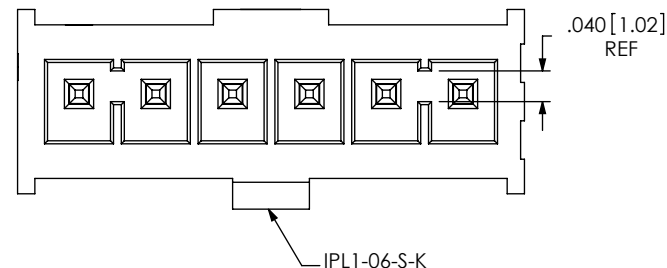
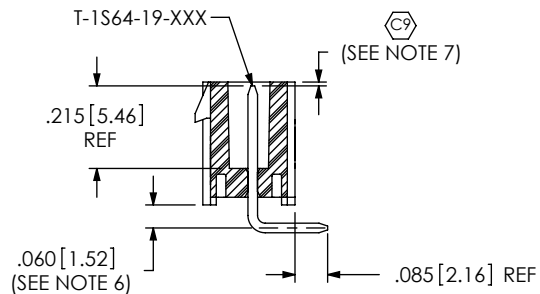
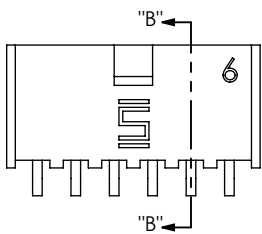
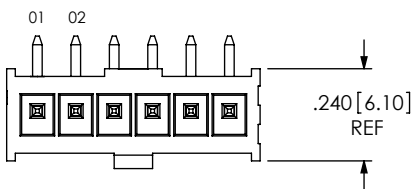


FIG 3

-RA: RIGHT ANGLE  
IPL1-106-01-XXX-S-RA SHOWN  
[DIFFERENT AS SHOWN, OTHERWISE SAME AS FIG 1]



SECTION "B"- "B"

PROPRIETARY NOTE

THIS DOCUMENT CONTAINS INFORMATION CONFIDENTIAL AND PROPRIETARY TO SAMTEC, INC. AND SHALL NOT BE REPRODUCED OR TRANSFERRED TO OTHER DOCUMENTS OR DISCLOSED TO OTHERS OR USED FOR ANY PURPOSE OTHER THAN THAT WHICH IT WAS OBTAINED WITHOUT THE EXPRESSED WRITTEN CONSENT OF SAMTEC, INC.

DO NOT SCALE DRAWING

SHEET SCALE: 2:1



520 PARK EAST BLVD, NEW ALBANY, IN 47150  
PHONE: 812-944-6733 FAX: 812-948-5047  
e-Mail: info@SAMTEC.com code 55322

DESCRIPTION:  
.100[2.54] SINGLE ROW TERMINAL ASSEMBLY

DWG. NO.  
IPL1-1XX-XX-XXX-S-XX-X

BY: D PURVIS 05/02/2005 SHEET 3 OF 3