

REVISION Q

UNLESS OTHERWISE NOTED TOLERANCES ARE:
 DIMENSIONS ARE IN INCHES
 ONE PLACE DECIMALS ± .1 [2.54] THREE PLACE DECIMALS ± .005 [.127] ANGLES ± 2°
 TWO PLACE DECIMALS ± .01 [.254] FOUR PLACE DECIMALS ± .0020 [.051]

TITLE: 1mm DUAL ROW STRIP ASSEMBLY
 DWG NO: MLE-1XX-XX-X-DV-X
 SHEET 1 OF 3

PATENT NUMBERS
 5713755 / 5961339

MLE-1XX-XX-X-DV-X

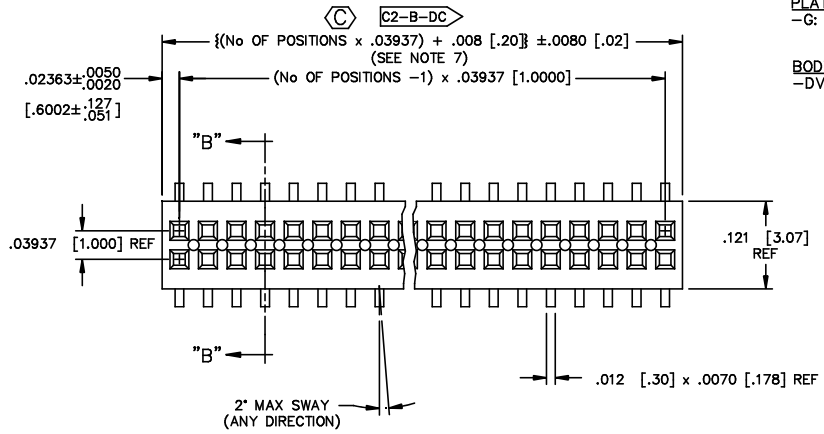
No OF POSITIONS
 -02 THRU -75 (PER ROW)

LEAD STYLE
 -01: SURFACE MOUNT (USE C-99-01-X)

PLATING SPECIFICATION
 -G: .000010 GOLD ON .000050 TO .000100 NICKEL

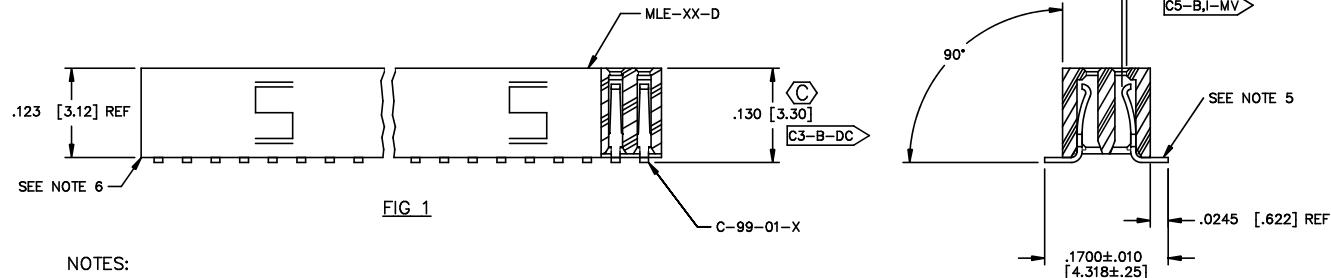
BODY SPECIFICATION
 -DV: DOUBLE VERTICAL (USE MLE-XX-D)

OPTION
 -A: ALIGNMENT PIN (SEE FIG 2 & 3, SHT 2) (USE MLE-XX-D-XX) (MOLDED TO POSITION OR STAKED) (SAMTEC DISCRETION WHICH -A PIN IS USED) (MOLDED 3 POSITION MIN. SEE FIG 2, SHT 2) (STAKED 7 POSITION MIN. SEE FIG 3, SHT 2)
 -P: PICK & PLACE PAD (SEE FIG 4, SHT 2) (USE LMP-01) (AVAILABLE ON POSITIONS -05 THRU -75 ONLY)
 -K: POLYIMIDE FILM PAD (SEE FIG 5, SHT 2) (-05 POSITIONS MINIMUM) (USE K-DOT-.157-.250-.005) [Q]
 -TR: TAPE & REEL (SEE FIG 6, SHT 3)



DO NOT SCALE FROM THIS PRINT

CRITICAL DIMENSION INSPECTION TABLE	
ASSEMBLY OPERATION	IN-PROCESS INSPECTION
FILL C-99-01-X	C3, C5
CUT MLE-XX-D TO LENGTH	C2
INSTALL SM-A7H	C4



- NOTES:
1. MINIMUM PUSHOUT FORCE: .5 lb.
 2. COPLANARITY; POS -02 THRU -26: .004 [.10]
 POS -27 THRU -75: .006 [.15]
 3. (C) REPRESENTS A CRITICAL DIMENSION.
 4. POSITIONS -05, -06 WITH PADS TO BE PACKAGED IN T&R, POSITIONS -05, 06 WITHOUT PADS AND POSITIONS -07 THRU -75 WITH OR WITHOUT PADS TO BE PACKAGED IN TUBES, POSITIONS -02 THRU -04 TO BE LAYER PACKAGED.
 5. BURR ALLOWANCE: .003 [.08] MAX
 6. .010 [.25] MAX CUT FLASH NOT TO PROTRUDE BELOW LEADS.
 7. WILL LOSE TWO POSITIONS FOR EVERY CUT MADE. MAXIMUM CUT FLASH TO BE .010 [.25] WITH NO FLASH IN HOLES OR EXTENDING BELOW LEADS.
 8. ENDWALL THINCKNESS TO BE SYMMETRICAL WITHIN .005 [.13].

PROPRIETARY NOTE
 THIS DOCUMENT CONTAINS INFORMATION CONFIDENTIAL AND PROPRIETARY TO SAMTEC INC. AND SHALL NOT BE REPRODUCED OR TRANSMITTED IN ANY FORM OR BY ANY MEANS, ELECTRONIC OR MECHANICAL, INCLUDING PHOTOCOPYING, RECORDING, OR BY ANY INFORMATION STORAGE AND RETRIEVAL SYSTEM, WITHOUT THE EXPRESS WRITTEN CONSENT OF SAMTEC INC.

MATERIAL:
 INSULATOR:
 BLACK LIQUID CRYSTAL POLYMER

TERMINAL:
 BERYLLIUM COPPER

samtec
 520 PARK EAST BLVD. NEW ALBANY, INDIANA 47150
 PHONE (812) 944-6733 P.O. BOX 1147
 CODE 55322

MADE BY: D PURVIS 01-07-97
 MLE-1XX-XX-X-DV-X
 SHEET 1 OF 3