

TABLE 2		
No OF POS	"A"	"B"
-014	.838 [21.27]	.793 [20.13]
-028	1.625 [41.28]	1.580 [40.13]
-042	2.413 [61.28]	2.368 [60.13]
**056	3.200 [81.28]	3.155 [80.14]
**070	3.988 [101.28]	3.943 [100.14]

** = SEE NOTES 13 & 17

TABLE 1	
No OF POS	COPLANARITY INCLUDING GP
-014 THRU -042	.004 [0.10]
**056 THRU **070	.006 [0.15]

** = SEE NOTES 13 & 17

QSE-XXX-XX-XXX-D-DP-XXX-XXXX

No OF POSITIONS _____
 (SEE NOTES 11, 13 & 14)
 -014, -028, -042, **056, **070
 (PER ROW)
 ** = SEE NOTES 13 & 17

LEAD STYLE _____
 -01: .1280 [3.30]
 * -02: .2460 [6.248]

PLATING SPECIFICATION
 PLATING THICKNESSES ARE FOR SIGNAL PINS ONLY. FOR GROUND PLANE THICKNESSES, SEE PP-T-1G2-XX-X. (SEE NOTES 7, 12 & 14)
 -F: 3μ" SELECTIVE GOLD CONTACT, MATTE TIN TAIL (USE C-126-21-F, T-1G2-01-F)
 -L: 10μ" SELECTIVE GOLD CONTACT, MATTE TIN TAIL (USE C-126-21-L, T-1G2-01-L)
 -H: 30μ" GOLD CONTACT, 3μ" GOLD TAIL (USE C-126-21-H, T-1G2-01-G)
 -C: 50μ" ELECTRO POLISHED SELECTIVE GOLD CONTACT, MATTE TIN TAIL (USE C-126-21-C, T-1G2-01-L)
 -STL: 30μ" SELECTIVE GOLD CONTACT, TIN LEAD (90/10 ±5%) TAILS (USE C-126-21-STL, T-1G2-01-STL)
 -FTL: 3μ" SELECTIVE GOLD CONTACT, TIN LEAD (90/10 ±5%) TAILS (USE C-126-21-FTL, T-1G2-01-FTL)
 -S: 30μ" SELECTIVE GOLD CONTACT, MATTE TIN TAIL (USE C-126-21-S, T-1G2-01-L)

PIN COUNT, BANKS 1-5 (SEE NOTE 11)
 -S: STANDARD
 -D: DIFFERENTIAL (SEE NOTE 10 & FIG 6, SHT 4)

OPTION
 -A: ALIGNMENT PINS (USE QSE-20-01-D-XX-A) (NOT AVAILABLE WITH -LC)
 -LC: LOCKING CLIPS (SEE NOTE 15) (USE LC-08-TM-01, SEE FIG 2, SHT 2) (NOT AVAILABLE WITH -A)
 -K: POLYIMIDE FILM (USE K-DOT-.325-.450-.005, SEE FIG 3, SHT 2)
 -TR: TAPE & REEL (42 POS MAX) (28 POS MAX FOR -GP)
 -GP: GUIDE POSTS (USE QSE-20-XX-D-GP, SEE FIG 4, SHT 3)
 -RT1: RETENTION (MUST USE -A OPTION) (USE QSE-20-01-D-XX-A-RT1 & SUB-SC-05-01-FF) (SEE FIG 5, SHT 3) (NOT AVAILABLE WITH -LC OR -GP) (NOT AVAILABLE IN 056 OR 070 POS)
 -L: LATCHING OPTION (28 POS MAX) (SEE FIG 8, SHT 4) (MUST USE -A OPTION) (NOT AVAILABLE WITH -LC, -GP, -FL, OR -RT1)

BODY STYLE
 -DP: DIFFERENTIAL PAIRS

ROW SPECIFICATION
 -D: DOUBLE (USE QSE-20-01-D-XX)
 No OF BANKS _____

* = NOT TOOLED
 ** = SEE NOTE 13

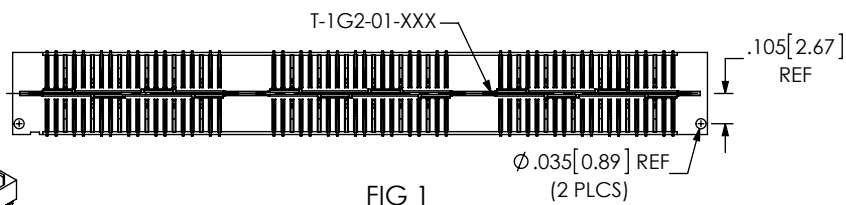
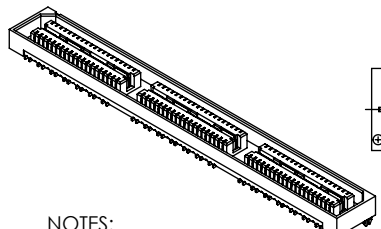
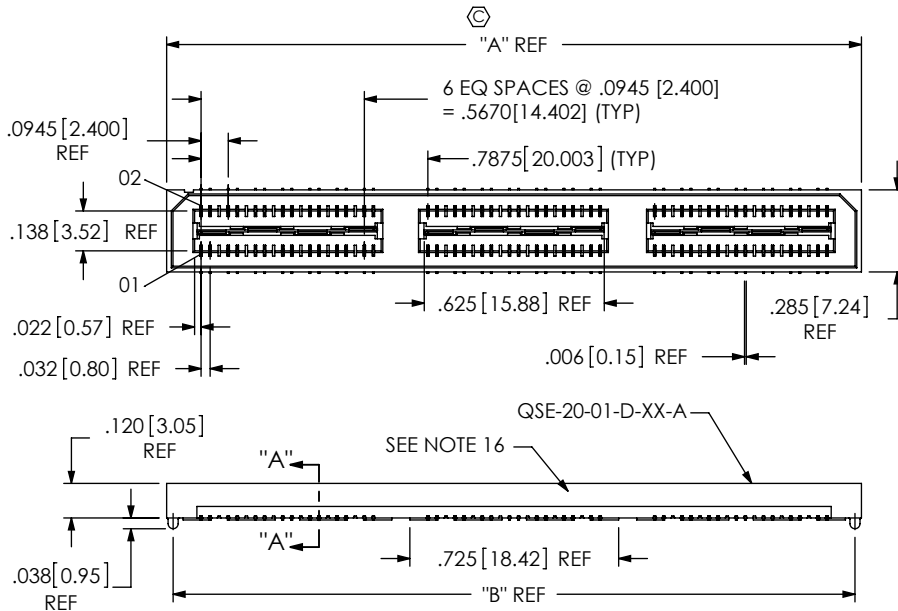
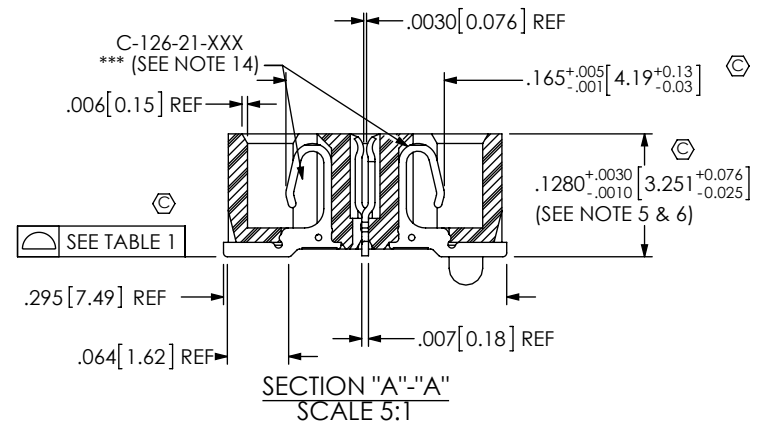


FIG 1
 -A: ALIGNMENT PIN OPTION (QSE-042-01-XXX-D-DP-A SHOWN)

- NOTES:
1. Ⓢ REPRESENTS A CRITICAL DIMENSION.
 2. MINIMUM TERMINAL RETENTION: 5 OZ.
 3. MINIMUM GROUND PLANE RETENTION: 8 OZ.
 4. PARTS TO BE MOLDED TO POSITION.
 5. MAXIMUM VARIANCE: .002 [0.05].
 6. DIMENSION APPLIES TO TERMINALS AND GROUND PLANE.
 7. -L PLATING CAN BE SUBSTITUTED FOR -F PLATING.
 8. GROUND PLANE PRESS HEIGHT MUST BE .003 [0.08] LESS THAN THE MAXIMUM HEIGHT OR .001 [0.03] GREATER THAN THE MINIMUM HEIGHT OF THE SOCKETS.
 9. SUB-SC-05-01-XX RETENTION TO BE 1.0 LBF IN BODY.
 10. IF ORDERING ALL BANKS DIFFERENTIAL PAIR, LEAVE BLANK. IF ORDERING ALL BANKS STANDARD PIN COUNT, ORDER QSE-XXX-XX-X-D-XXX (STANDARD QSE)
 11. PIN COUNT PER ROW= (# -DP BANKS X 14) + (# -S BANKS X 20)
 12. MAY SUB C-126-01-XXX FOR C-126-21-XXX.
 13. FOR NEW APPLICATIONS REQUIRING THESE POSITIONS, PLEASE CONTACT SAMTEC INTERCONNECT PROCESSING GROUP.
 14. FOR -056, -070 POSITIONS USE C-269-11-XXX. DO NOT SUB C-126.
 15. DUE TO THE HIGH AMOUNT OF INSERTION FORCE NEEDED, THE -LC OPTION IS NOT COMPATIBLE WITH AUTO PLACEMENT. SAMTEC RECOMMENDS MANUAL PLACEMENT FOR ALL ASSEMBLIES WITH THE -LC OPTION.
 16. SIDE WALLS ARE RIBBED AS NECESSARY TO CONTROL BOW.
 17. AVAILABLE FOR EXISTING CUSTOMERS ONLY.



UNLESS OTHERWISE SPECIFIED, DIMENSIONS ARE IN INCHES. TOLERANCES ARE: DECIMALS .XX: ±.01 [25] .XXX: ±.005 [13] .XXXX: ±.0020 [05]	PROPRIETARY NOTE THIS DOCUMENT CONTAINS INFORMATION CONFIDENTIAL AND PROPRIETARY TO SAMTEC, INC. AND SHALL NOT BE REPRODUCED OR TRANSFERRED TO OTHER DOCUMENTS OR DISCLOSED TO OTHERS OR USED FOR ANY PURPOSE OTHER THAN THAT WHICH IT WAS OBTAINED WITHOUT THE EXPRESSED WRITTEN CONSENT OF SAMTEC, INC.		
		520 PARK EAST BLVD, NEW ALBANY, IN 47150 PHONE: 812-944-6733 FAX: 812-948-5047 e-Mail: info@SAMTEC.com code 55322	
MATERIAL: DO NOT SCALE DRAWING SHEET SCALE: 1.5:1 INSULATOR: LCP, UL94V0; COLOR: BLACK CONTACT: PHOS BRONZE GROUND PLANE: PHOS BRONZE		DESCRIPTION: .8mm DIFFERENTIAL PAIRS HS SOCKET ASSEMBLY DWG. NO. QSE-XXX-XX-XXX-D-DP-XXX-XXXX BY: DEAN P 5/05/2000 SHEET 1 OF 4	

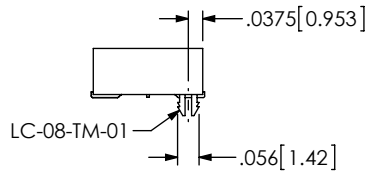
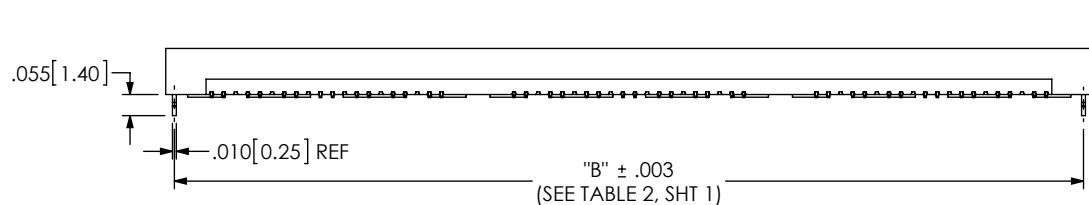


FIG 2
 -LC: LOCKING CLIP OPTION
 (QSE-042-01-XXX-D-DP-LC SHOWN)
 (DIFFERENT AS SHOWN, OTHERWISE SAME AS FIG 1)

TABLE 3

No OF POS	"R"				"S"			
	-LC, -A	-GP	-RT	-L	-LC, -A	-GP	-RT	-L
-014	.838 [21.27]	1.216 [30.88]	1.438 [36.51]	1.048 [26.61]	.256 [6.51]	.445 [11.31]	.556 [14.13]	.361 [9.18]
-028	1.625 [41.28]	2.003 [50.89]	2.225 [56.52]	1.835 [46.61]	.650 [16.51]	.839 [21.32]	.950 [24.13]	.755 [19.18]
-042	2.413 [61.28]	2.791 [70.89]	3.013 [76.52]	2.623 [66.61]	1.044 [26.51]	1.233 [31.32]	1.344 [34.13]	1.149 [29.18]
**-.056	3.200 [81.28]	3.578 [90.89]	N/A	3.410 [86.61]	1.438 [36.51]	1.627 [41.32]	N/A	1.543 [39.18]
**-.070	3.988 [101.28]	4.366 [110.89]	N/A	4.198 [106.62]	1.831 [46.51]	2.020 [51.32]	N/A	1.936 [49.18]

** = SEE NOTES 13 & 17

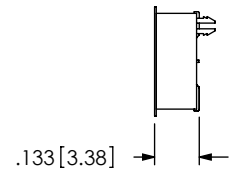
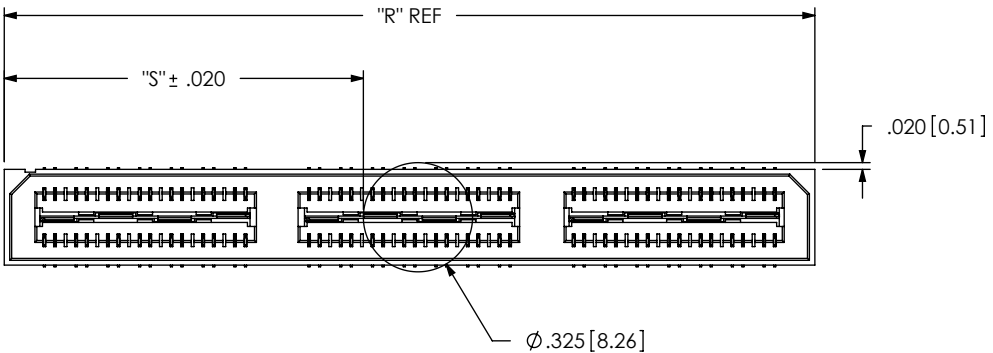


FIG 3
 -K: POLYIMIDE FILM PAD
 (USE K-DOT-.325-.450-.005)

c:\enterprise\vaull\DWG\MISC\MKTG\QSE-XXX-XX-XXX-D-DP-XXX-XXXX-MKT.SLDDRW

PROPRIETARY NOTE
 THIS DOCUMENT CONTAINS INFORMATION CONFIDENTIAL AND PROPRIETARY TO SAMTEC, INC. AND SHALL NOT BE REPRODUCED OR TRANSFERRED TO OTHER DOCUMENTS OR DISCLOSED TO OTHERS OR USED FOR ANY PURPOSE OTHER THAN THAT WHICH IT WAS OBTAINED WITHOUT THE EXPRESSED WRITTEN CONSENT OF SAMTEC, INC.



520 PARK EAST BLVD., NEW ALBANY, IN 47150
 PHONE: 812-944-6733 FAX: 812-948-5047
 e-Mail: info@SAMTEC.com code 55322

DO NOT SCALE DRAWING

SHEET SCALE: 2:1

DESCRIPTION:
 .8mm DIFFERENTIAL PAIRS HS SOCKET ASSEMBLY
 DWG. NO.
 QSE-XXX-XX-XXX-D-DP-XXX-XXXX
 BY: DEAN P 5/05/2000 SHEET 2 OF 4

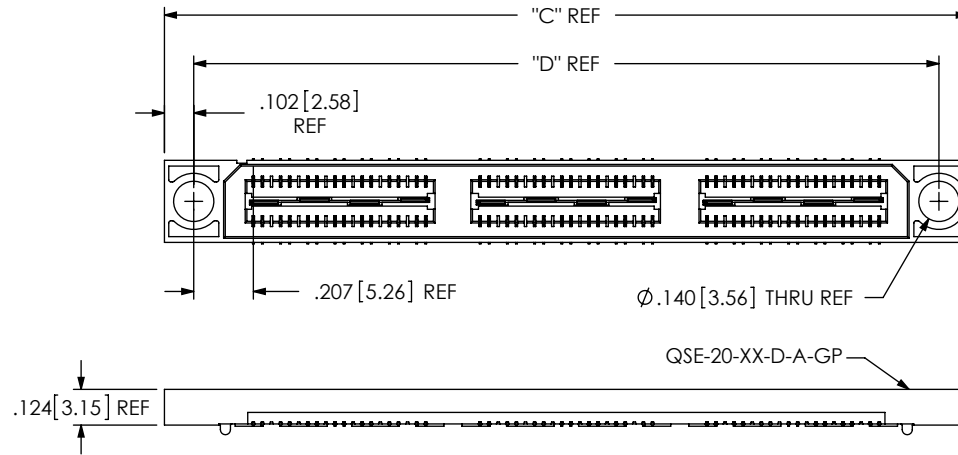


FIG 4
 -GP OPTION
 (QSE-042-01-XXX-D-DP-GP SHOWN)
 (DIFFERENT AS SHOWN, OTHERWISE SAME AS FIG 1)
 (AVAILABLE ON LEAD STYLES -01 & -01-A ONLY)
 (28 POSITION MAX FOR TAPE & REEL PACKAGING)

TABLE 4		
No OF POS	"C"	"D"
-014	1.216 [30.88]	1.013 [25.73]
-028	2.003 [50.89]	1.801 [45.73]
-042	2.791 [70.89]	2.588 [65.74]
** -056	3.578 [90.89]	3.376 [85.74]
** -070	4.366 [110.89]	4.163 [105.74]

** = SEE NOTES 13 & 17

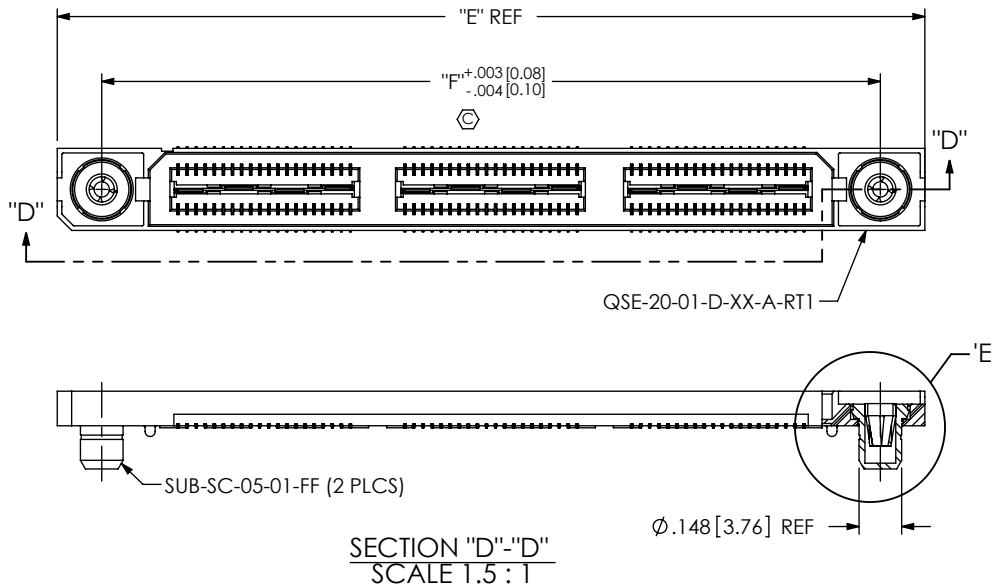
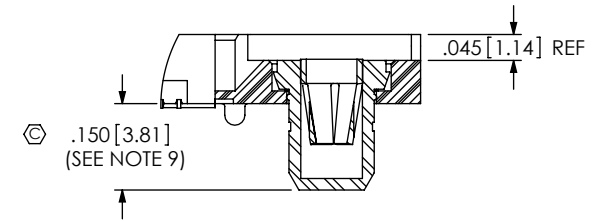


FIG 5
 -RT1: RETENTION OPTION
 (QSE-042-01-XXX-D-DP-A-RT1 SHOWN)
 (DIFFERENT AS SHOWN, OTHERWISE SAME AS FIG 1)
 (MUST USE -A OPTION)
 (NOT AVAILABLE WITH -LC OR -GP OPTIONS)
 (NOT AVAILABLE WITH ** -056 & ** -070)

TABLE 5		
No OF POS	"E"	"F"
-014	1.438 [36.51]	1.129 [28.66]
-028	2.225 [56.52]	1.916 [48.67]
-042	3.013 [76.52]	2.704 [68.67]
** -056	N/A	N/A
** -070	N/A	N/A

** = SEE NOTES 13 & 17



DETAIL 'E'
 SCALE 3:1

PROPRIETARY NOTE
 THIS DOCUMENT CONTAINS INFORMATION CONFIDENTIAL AND PROPRIETARY TO SAMTEC, INC. AND SHALL NOT BE REPRODUCED OR TRANSFERRED TO OTHER DOCUMENTS OR DISCLOSED TO OTHERS OR USED FOR ANY PURPOSE OTHER THAN THAT WHICH IT WAS OBTAINED WITHOUT THE EXPRESSED WRITTEN CONSENT OF SAMTEC, INC.

DO NOT SCALE DRAWING

SHEET SCALE: 2:1

samtec

520 PARK EAST BLVD, NEW ALBANY, IN 47150
 PHONE: 812-944-6733 FAX: 812-948-5047
 e-Mail: info@SAMTEC.com code 55322

DESCRIPTION:
 .8mm DIFFERENTIAL PAIRS HS SOCKET ASSEMBLY

DWG. NO.
 QSE-XXX-XX-XXX-D-DP-XXX-XXXX

BY: DEAN P 5/05/2000 SHEET 3 OF 4

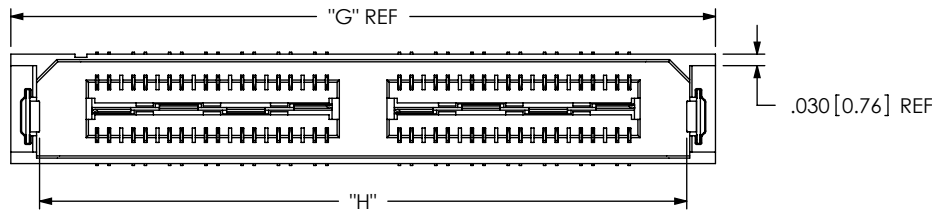
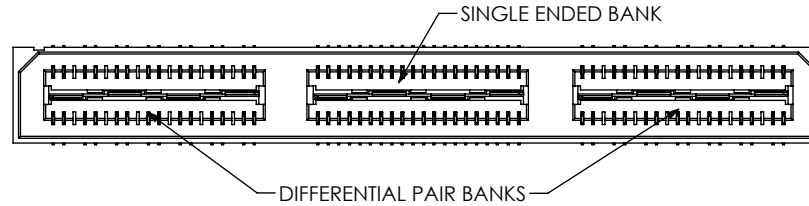
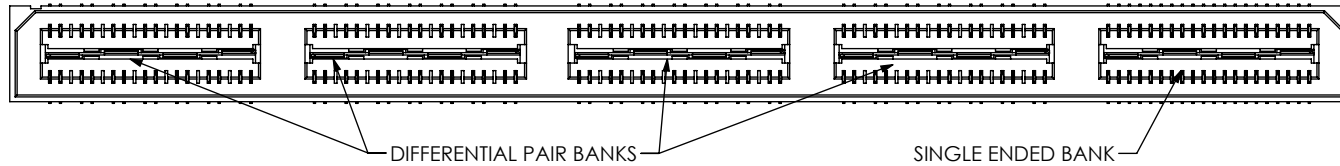


TABLE 6

No OF POS	"G"	"H"	"J"
-014	1.048 [26.61]	.898 [22.80]	.172 [4.36]
-028	1.835 [46.61]	1.685 [42.80]	0.959 [24.36]
-042	N/A	N/A	N/A
**056	N/A	N/A	N/A
**070	N/A	N/A	N/A

** = SEE NOTES 13 & 17

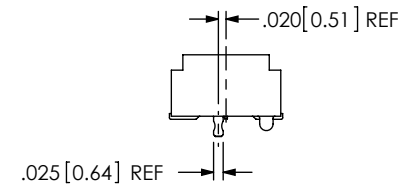


FIG 8
-L: LATCHING OPTION
(QSE-020-01-XXX-D-DP-A-L SHOWN)
(DIFFERENT AS SHOWN, OTHERWISE SAME AS FIG 1)
(MUST USE -A OPTION) (MAXIMUM 28 POS)
(NOT AVAILABLE WITH -LC, -GP, -FL, OR -RT1)

CRITICAL DIMENSION INSPECTION INSTRUCTION TABLE

ASSEMBLY OPERATION	IN-PROCESS INSPECTION
FILL C-126-21	C1, C3, C12
ADD -RT1 OPTION	C4, C6
ADD -L OPTION	C7, C8, C9, C15
ADD -K OPTION	C10, C11

PROPRIETARY NOTE

THIS DOCUMENT CONTAINS INFORMATION CONFIDENTIAL AND PROPRIETARY TO SAMTEC, INC. AND SHALL NOT BE REPRODUCED OR TRANSFERRED TO OTHER DOCUMENTS OR DISCLOSED TO OTHERS OR USED FOR ANY PURPOSE OTHER THAN THAT WHICH IT WAS OBTAINED WITHOUT THE EXPRESSED WRITTEN CONSENT OF SAMTEC, INC.

DO NOT SCALE DRAWING

SHEET SCALE: 1.375:1



520 PARK EAST BLVD, NEW ALBANY, IN 47150
PHONE: 812-944-6733 FAX: 812-948-5047
e-Mail: info@SAMTEC.com code 55322

DESCRIPTION:
.8mm DIFFERENTIAL PAIRS HS SOCKET ASSEMBLY

DWG. NO.
QSE-XXX-XX-XXX-D-DP-XXX-XXXXX

BY: DEAN P 5/05/2000 SHEET 4 OF 4