

No OF POSITIONS  
 -.020, -.040, -.060,  
 \*.080, \*.100  
 (PER ROW)  
 \* (SEE NOTE 11)

OPTION

- A: ALIGNMENT PINS  
(N/A ON STYLE -.07 & -.08)
- LC: LOCKING CLIPS (SEE NOTE 12)  
(USE LC-08-TM-01)
- K: POLYIMIDE FILM  
(USE K-DOT-.276-.375-.005, SEE FIG. 2)
- TR: TAPE & REEL (60 POS. MAX)  
(40 FOR -GP OPTION)
- (N/A ON STYLE -.05, -.06, -.07, & -.08)
- GP: GUIDE POSTS (SEE FIG. 3, SHT. 2)  
(AVAILABLE ON -01 ONLY)  
(USE QTE-20-01-D-XX-GP)
- (T & R PACK: 40 POS. MAX.)
- SD: SCREW DOWN (SEE FIGURE 4, SHEET 2)  
(AVAILABLE ON -01 ONLY)  
(USE QTE-20-01-D-XX-SD)
- FL: FRICTION LOCKS (SEE FIG. 8, SHEET 4)  
(ONLY AVAILABLE ON -01 & -02)  
(NOT AVAILABLE WITH -GP, -SD)
- RT1: RETENTION OPTION (SEE FIG. 9, SHEET 5)  
(ONLY AVAILABLE ON -01 LEAD STYLE)  
(MUST USE -A OPTION)  
(USE QTE-20-01-D-XX-A-RT1 & T-1R36-01-F)
- (NOT AVAILABLE WITH -LC, -GP, -SD, OR -FL)
- L: LATCHING OPTION (40 POS. MAX.)  
(SEE FIG. 11, SHEET 6) (MUST USE -A OPTION)  
(AVAILABLE ON -01 ONLY)  
(NOT AVAILABLE WITH -LC, -GP, -SD, -FL, OR -RT1)

LEAD STYLE

- 01: .1680 [4.267]
- 02: .2861 [7.267]
- 03: .4042 [10.267]
- 04: .6010 [15.265]
- 05: .7190 [18.263]
- 06: .8370 [21.260]
- 07: .9540 [24.231]
- 08: 1.1510 [29.260]
- 09: .5220 [13.258]
- 10: .5606 [14.239]

PLATING SPECIFICATION

- F: FLASH GOLD WITH MATTE TIN TAILS  
(USE T-1SXX-XX-F, T-1G1-XX-F)  
(SEE NOTE 07)
- L: LIGHT GOLD WITH MATTE TIN TAILS  
(USE T-1SXX-XX-L, T-1G1-XX-L)
- H: HEAVY GOLD WITH FLASH GOLD TAILS  
(USE T-1SXX-XX-H, T-1G1-XX-G)
- C: ELECTRO-POLISHED SELECTIVE  
(USE T-1SXX-XX-C, T-1G1-XX-L)
- STL: SELECTIVE TIN LEAD  
(USE T-1SXX-XX-STL, T-1G1-XX-STL)
- FTL: SELECTIVE TIN LEAD  
(USE T-1SXX-XX-FTL, T-1G1-XX-FTL)

ROW SPECIFICATION

- D: DOUBLE (USE QTE-20-XX-D-XX & QTEH-20-XX-D-XX)

No OF BANKS

T-1SXX-XX-XXX  
(SEE TABLE 1)

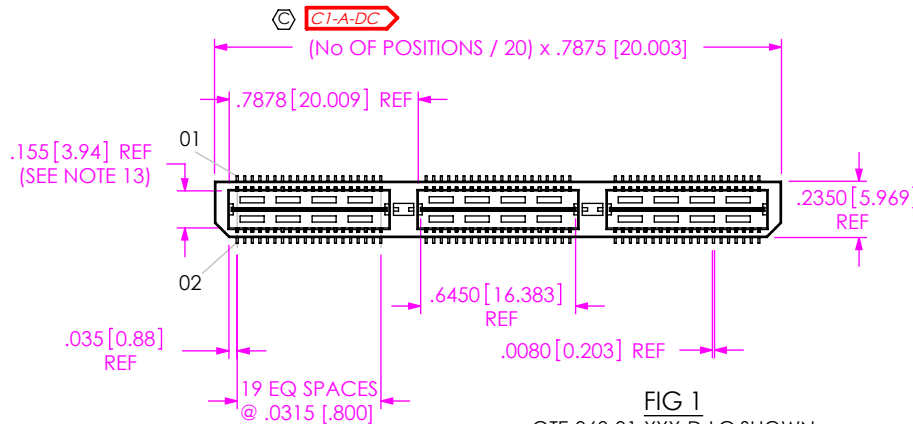
**C3-B-CP**  
SEE TABLE 2

**A**+0.003  
-0.001  
(SEE NOTE 9)  
**C2-B-DC**

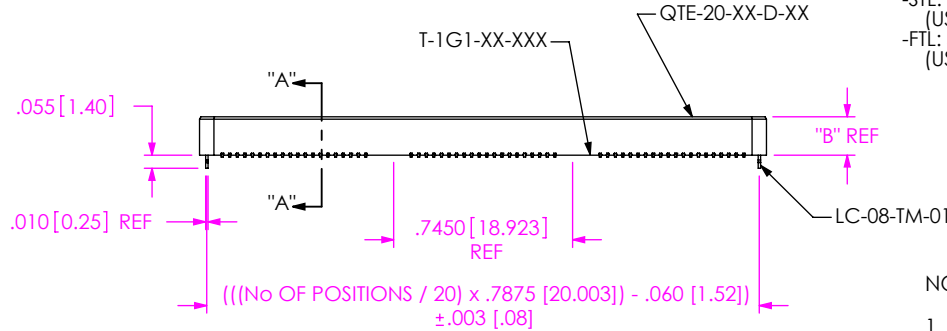


NOTES:

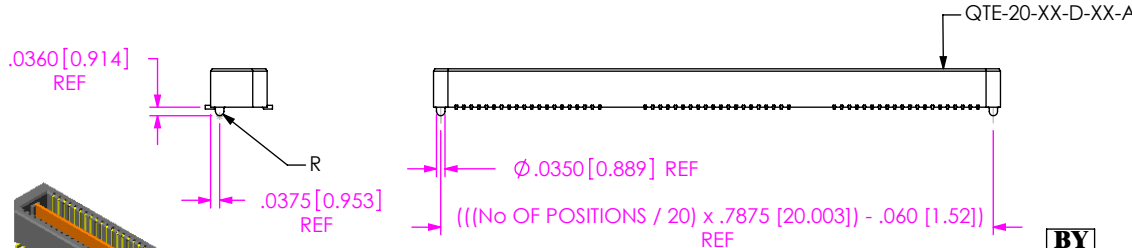
1.  $\text{\textcircled{C}}$  REPRESENTS A CRITICAL DIMENSION.
2. MINIMUM TERMINAL RETENTION: 8 OZ.
3. MINIMUM GROUND PLANE RETENTION: 1 LB.
4. PARTS TO BE MOLDED TO POSITION.
5. MAXIMUM VARIANCE OF .002 [.05].
6. DIMENSION APPLIES TO TERMINALS AND GROUND PLANE.
7. T-1SXX-XX-L CAN BE SUBSTITUTED FOR T-1SXX-XX-F.
8. NOTE DELETED.
9. GROUND PLANE PRESS HEIGHT MUST BE .003 [.08] LESS THAN THE MAX HEIGHT OR .001 [.03] GREATER THAN THE MINIMUM HEIGHT OF THE TERMINALS.
10. T-1R36 RETENTION TO BODY TO BE 1.0 LBF.
11. FOR NEW APPLICATIONS REQUIRING THESE POSITIONS, PLEASE CONTACT SAMTEC INTERCONNECT PROCESSING GROUP.
12. DUE TO THE HIGH AMOUNT OF INSERTION FORCE NEEDED, THE -LC OPTION IS NOT COMPATIBLE WITH AUTO PLACEMENT. SAMTEC RECOMMENDS MANUAL PLACEMENT FOR ALL ASSEMBLIES WITH THE -LC OPTION."
13. ROW TO ROW MIN IS .152, PIN CAN EXTEND PAST WALL .003 MAX.



DO NOT SCALE FROM THIS PRINT



-LC: LOCKING CLIP OPTION SHOWN



-A: ALIGNMENT PIN OPTION SHOWN  
(STYLES -.01, -.02 & -.03)

TABLE 2

No OF POSITIONS	COPLANARITY INCLUDING GP
-.020 THRU -.060	.004 [.10]
-.080 THRU -.100	.006 [.15]

(SEE NOTE 11)

TABLE 1

STYLE	"A"	"B"	BODY	GROUND PLANE	TERMINAL	MATED HEIGHT WITH QSE-01
-.01	.1680 [4.267]	.1600 [4.064]	QTE-20-01-D-XX	T-1G1-01-XXX	T-1S39-01-XXX	.197 [5.00] REF
-.02	.2861 [7.267]	.2781 [7.064]	QTE-20-02-D-XX	T-1G1-02-XXX	T-1S39-02-XXX	.315 [8.00] REF
-.03	.4042 [10.267]	.3962 [10.063]	QTE-20-03-D-XX	T-1G1-03-XXX	T-1S39-03-XXX	.433 [11.00] REF

BY

**C12-A-LMV**

UNLESS OTHERWISE SPECIFIED, DIMENSIONS ARE IN INCHES. TOLERANCES ARE:  
 DECIMALS .XX: ±.01 [.3]  
 .XXX: ±.005 [.13]  
 .XXXX: ±.0020 [.051]

PROPRIETARY NOTE

THIS DOCUMENT CONTAINS INFORMATION CONFIDENTIAL AND PROPRIETARY TO SAMTEC, INC. AND SHALL NOT BE REPRODUCED OR TRANSFERRED TO OTHER DOCUMENTS OR DISCLOSED TO OTHERS OR USED FOR ANY PURPOSE OTHER THAN THAT WHICH IT WAS OBTAINED WITHOUT THE EXPRESSED WRITTEN CONSENT OF SAMTEC, INC.

MATERIAL: DO NOT SCALE DRAWING SHEET SCALE: 1:0.8

INSULATOR: LCP, COLOR: BLACK  
 TERMINAL: PHOS BRONZE  
 GROUND PLANE: PHOS BRONZE



520 PARK EAST BLVD, NEW ALBANY, IN 47150  
 PHONE: 812-944-6733 FAX: 812-948-5047  
 e-Mail info@SAMTEC.com code 55322

DESCRIPTION: .8mm DOUBLE ROW HS TERMINAL ASSEMBLY

DWG. NO. QTE-XXX-XX-XXX-D-XXX

BY: DEAN P 09-14-2010 SHEET 1 OF 6

FIG 2  
-K: POLYIMIDE FILM PAD  
[USE K-DOT-.276-.375-.005]

TABLE 3	
STYLE	"R"
-01	.173[4.39]
-02	.291[7.39]
-03	.409[10.39]
-04	.605[15.37]
-05	.721[18.31]
-06	.840[21.33]
-09	.528 [13.41]
-10	.567[14.37]

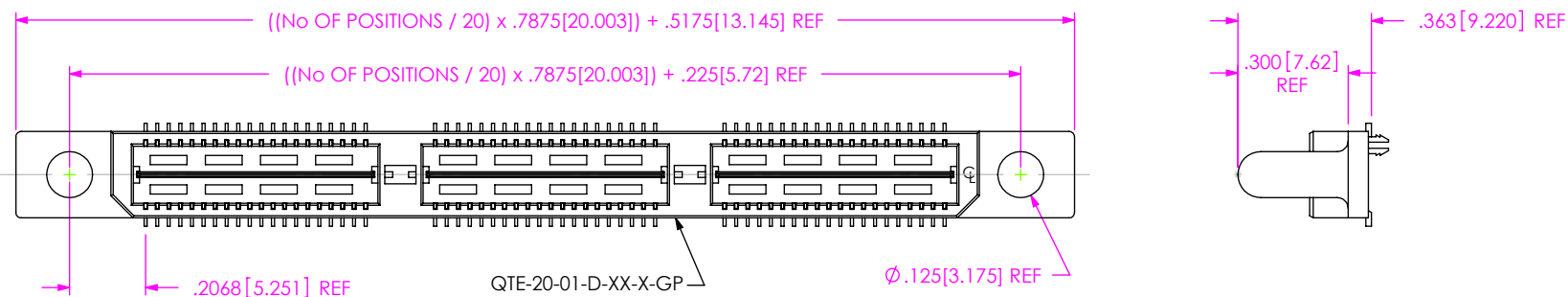
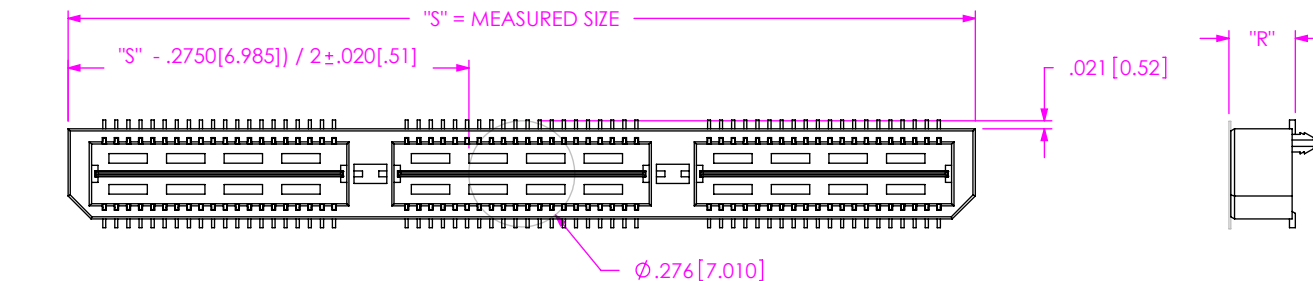


FIG 3  
-GP: GUIDE POST OPTION  
(-01 LEAD STYLE ONLY)  
(SAME AS FIG 1, UNLESS OTHERWISE STATED)

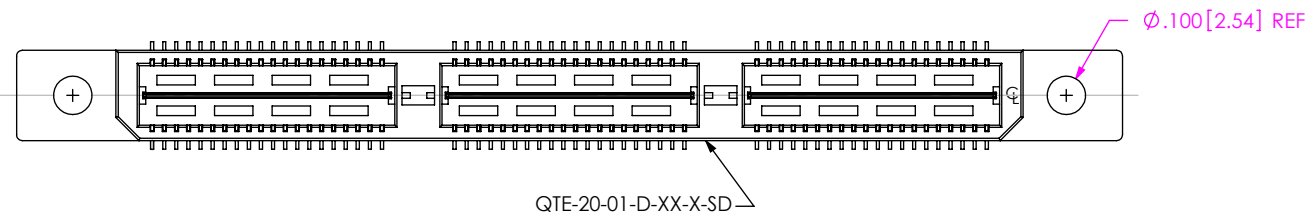


FIG 4  
-SD: SCREW DOWN OPTION  
(-01 LEAD STYLE ONLY)  
(SAME AS FIG 3, UNLESS OTHERWISE STATED)

PROPRIETARY NOTE  
THIS DOCUMENT CONTAINS INFORMATION  
CONFIDENTIAL AND PROPRIETARY TO  
SAMTEC, INC. AND SHALL NOT BE REPRODUCED  
OR TRANSFERRED TO OTHER DOCUMENTS OR  
DISCLOSED TO OTHERS OR USED FOR ANY  
PURPOSE OTHER THAN THAT WHICH IT WAS  
OBTAINED WITHOUT THE EXPRESSED WRITTEN  
CONSENT OF SAMTEC, INC.

DO NOT SCALE DRAWING

SHEET SCALE: 2:1

**samtec**

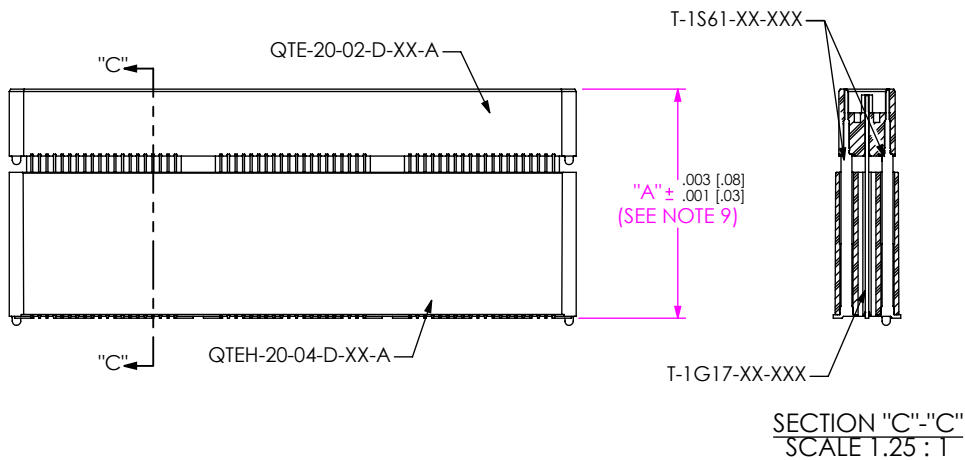
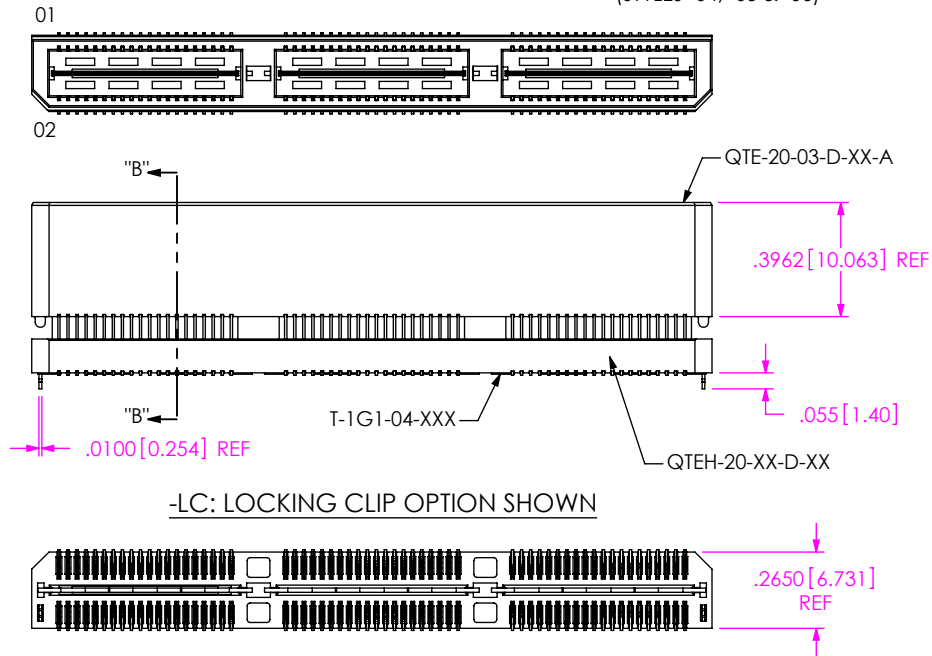
520 PARK EAST BLVD, NEW ALBANY, IN 47150  
PHONE: 812-944-6733 FAX: 812-948-5047  
e-Mail info@SAMTEC.com code 55322

DESCRIPTION:  
.8mm DOUBLE ROW HS TERMINAL ASSEMBLY

DWG. NO. QTE-XXX-XX-XXX-D-XXX

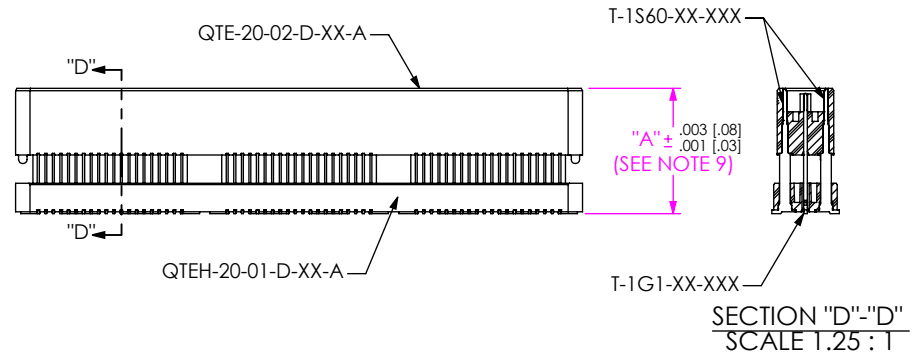
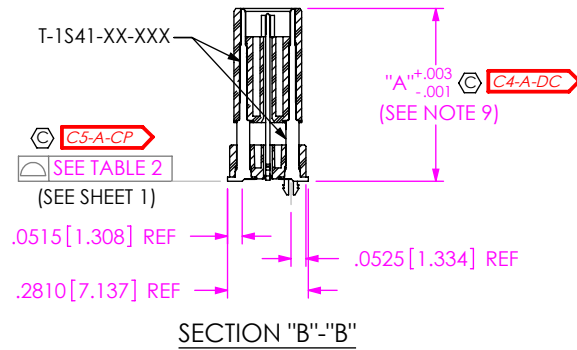
BY: DEAN P 09-14-2010 SHEET 2 OF 6

**FIG 5**  
 QTE-060-04-X-D-LC SHOWN  
 [DIFFERENT AS SHOWN, OTHERWISE SAME AS FIG 1]  
 (STYLES -04, -05 & -06)



**FIG 6**  
 QTE-060-07-X-D-A SHOWN  
 [DIFFERENT AS SHOWN, OTHERWISE SAME AS FIG 5]  
 (STYLES -07 & -08)

TABLE 4						MATED HEIGHT WITH QSE-01
STYLE	"A"	GROUND PLANE	TERMINAL	BOTTOM SPACER BODY	TOP BODY	
-04	6010 [15 265]	T-1G1-04-XXX	T-1S41-04-XXX	QTEH-20-01-D-XXX	QTE-20-03-D-XXX	630 [16.00] REF
-05	7190 [18 263]	T-1G1-05-XXX	T-1S41-05-XXX	QTEH-20-01-D-XXX	QTE-20-03-D-XXX	748 [19.00] REF
-06	8370 [21 260]	T-1G1-06-XXX	T-1S41-06-XXX	QTEH-20-02-D-XXX	QTE-20-03-D-XXX	866 [22.00] REF
-07	9540 [24 232]	T-1G17-01-XXX	T-1S61-21-XXX	QTEH-20-04-D-XXX	QTE-20-02-D-XXX	984 [25.00] REF
-08	1.1510 [29 235]	T-1G17-02-XXX	T-1S61-22-XXX	QTEH-20-04-D-XXX	QTE-20-02-D-XXX	1.181 [30.00] REF
-09	5220 [13 259]	T-1G1-09-XXX	T-1S60-09-XXX	QTEH-20-01-D-XXX	QTE-20-02-D-XXX	551 [14.00] REF
-10	5606 [14 239]	T-1G1-10-XXX	T-1S60-10-XXX	QTEH-20-01-D-XXX	QTE-20-02-D-XXX	591 [15.00] REF



**FIG 7**  
 QTE-060-09-X-D-A SHOWN  
 [DIFFERENT AS SHOWN, OTHERWISE SAME AS FIG 5]  
 (STYLES -09 & -10)

F:\DWG\MISC\MKTG\QTE-XXX-XX-X-D-XXX-MKT.SLDDRW

**PROPRIETARY NOTE**  
 THIS DOCUMENT CONTAINS INFORMATION CONFIDENTIAL AND PROPRIETARY TO SAMTEC, INC. AND SHALL NOT BE REPRODUCED OR TRANSFERRED TO OTHER DOCUMENTS OR DISCLOSED TO OTHERS OR USED FOR ANY PURPOSE OTHER THAN THAT WHICH IT WAS OBTAINED WITHOUT THE EXPRESSED WRITTEN CONSENT OF SAMTEC, INC.

DO NOT SCALE DRAWING

SHEET SCALE: 1:0.666667



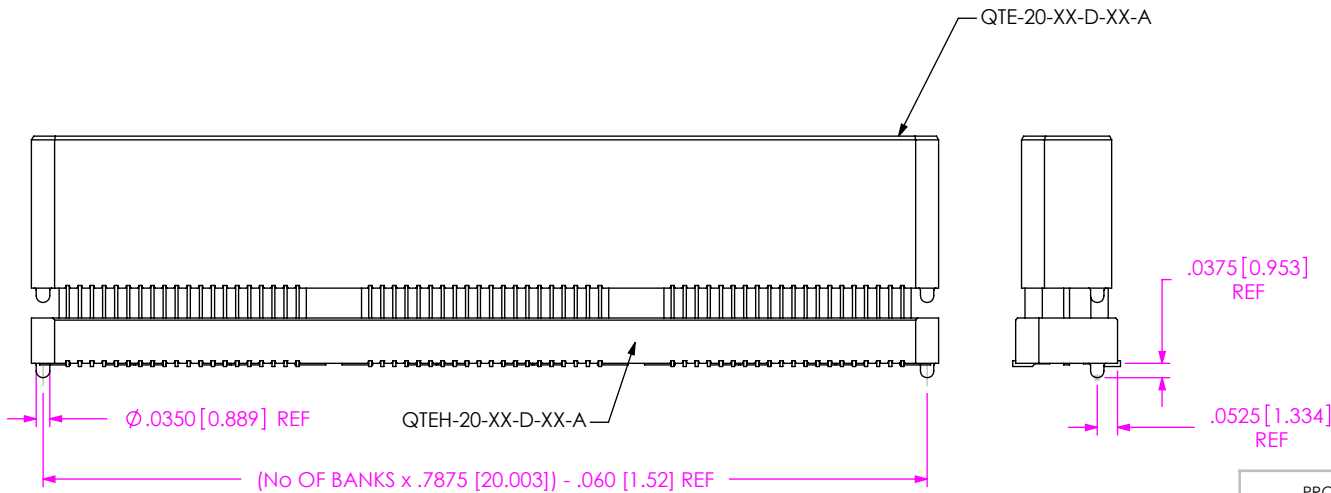
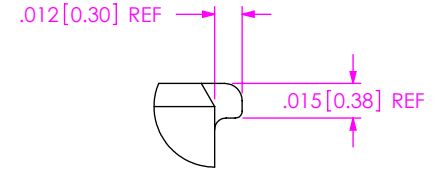
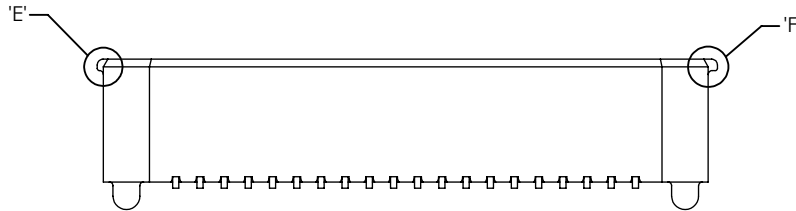
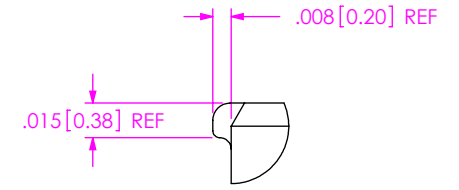
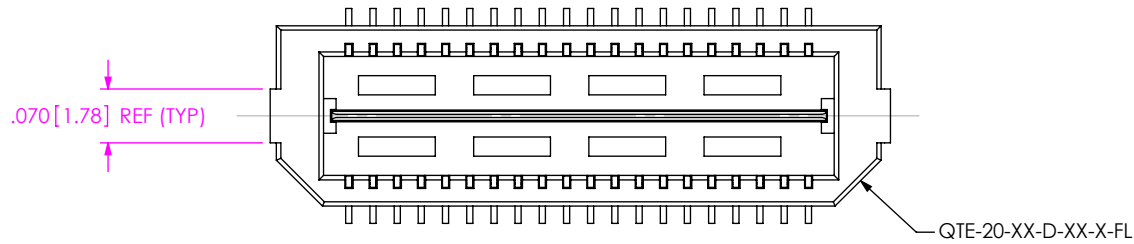
520 PARK EAST BLVD. NEW ALBANY, IN 47150  
 PHONE: 812-944-6733 FAX: 812-948-5047  
 e-Mail: info@SAMTEC.com code 55322

DESCRIPTION:  
 .8mm DOUBLE ROW HS TERMINAL ASSEMBLY

DWG. NO. **QTE-XXX-XX-XXX-D-XXX**

BY: DEAN P 09-14-2010 SHEET 3 OF 6

**FIG 8**  
 -FL: FRICTION LOCKS  
 (ONLY AVAILABLE ON -01 & -02 LEAD STYLES)  
 (NOT AVAILABLE WITH -GP, -SD OPTIONS)  
 (SAME AS FIG 1, UNLESS OTHERWISE STATED)



**-A: ALIGNMENT PIN OPTION**  
 (STYLES -04, -05, -06, -07, -08, -09 & -10)

**PROPRIETARY NOTE**  
 THIS DOCUMENT CONTAINS INFORMATION CONFIDENTIAL AND PROPRIETARY TO SAMTEC, INC. AND SHALL NOT BE REPRODUCED OR TRANSFERRED TO OTHER DOCUMENTS OR DISCLOSED TO OTHERS OR USED FOR ANY PURPOSE OTHER THAN THAT WHICH IT WAS OBTAINED WITHOUT THE EXPRESSED WRITTEN CONSENT OF SAMTEC, INC.

DO NOT SCALE DRAWING

SHEET SCALE: 2:1



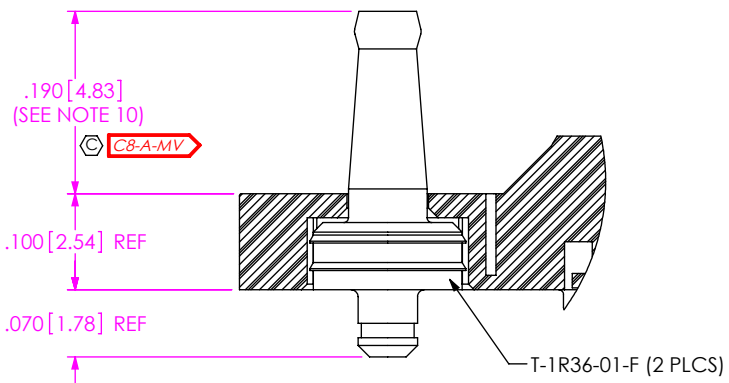
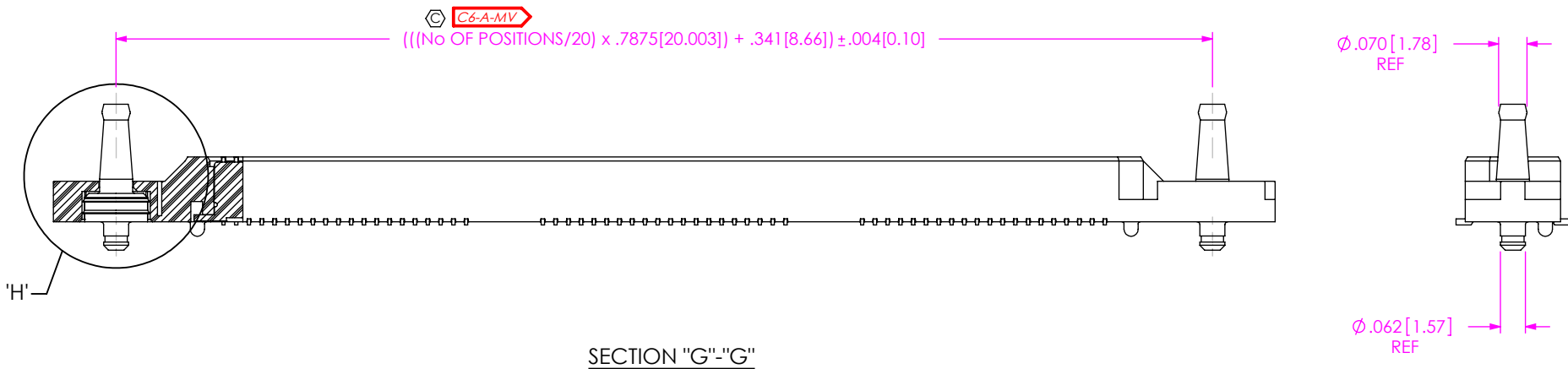
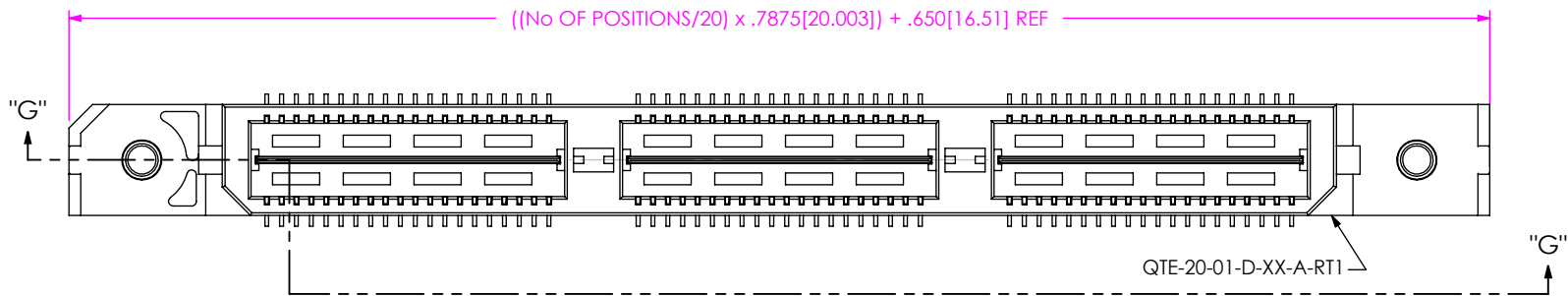
520 PARK EAST BLVD, NEW ALBANY, IN 47150  
 PHONE: 812-944-6733 FAX: 812-948-5047  
 e-Mail info@SAMTEC.com code 55322

DESCRIPTION:  
**.8mm DOUBLE ROW HS TERMINAL ASSEMBLY**

DWG. NO.  
**QTE-XXX-XX-XXX-D-XXX**

BY: DEAN P 09-14-2010 SHEET 4 OF 6

FIG 9  
 -RT1: RETENTION OPTION  
 (ONLY AVAILABLE ON -01 LEAD STYLE) (MUST USE -A OPTION)  
 (NOT AVAILABLE WITH -LC, -GP, -SD, OR -FL OPTIONS)  
 (NOT AVAILABLE ON -100 POSITION)  
 (SAME AS FIG 1, UNLESS OTHERWISE STATED)



DETAIL 'H'  
 SCALE 5:1

PROPRIETARY NOTE  
 THIS DOCUMENT CONTAINS INFORMATION  
 CONFIDENTIAL AND PROPRIETARY TO  
 SAMTEC, INC. AND SHALL NOT BE REPRODUCED  
 OR TRANSFERRED TO OTHER DOCUMENTS OR  
 DISCLOSED TO OTHERS OR USED FOR ANY  
 PURPOSE OTHER THAN THAT WHICH IT WAS  
 OBTAINED WITHOUT THE EXPRESSED WRITTEN  
 CONSENT OF SAMTEC, INC.

DO NOT SCALE DRAWING  
 SHEET SCALE: 1:0.4

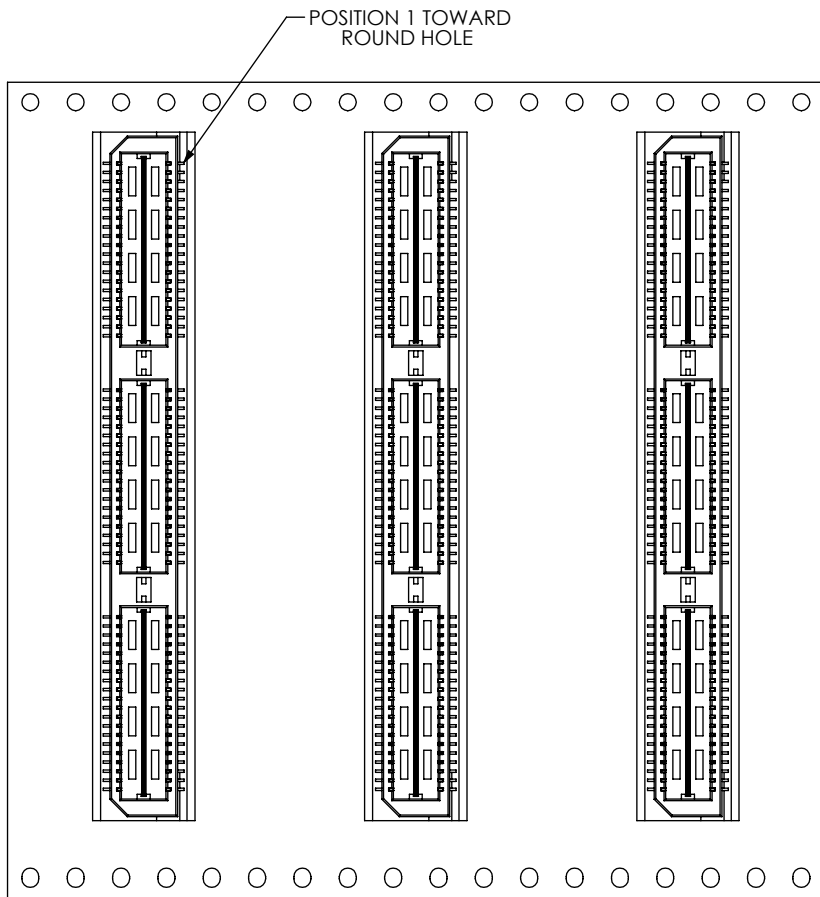


520 PARK EAST BLVD, NEW ALBANY, IN 47150  
 PHONE: 812-944-6733 FAX: 812-948-5047  
 e-Mail info@SAMTEC.com code 55322

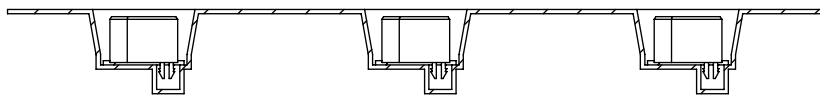
DESCRIPTION:  
 .8mm DOUBLE ROW HS TERMINAL ASSEMBLY  
 DWG. NO. QTE-XXX-XX-XXX-D-XXX

REVISION BY

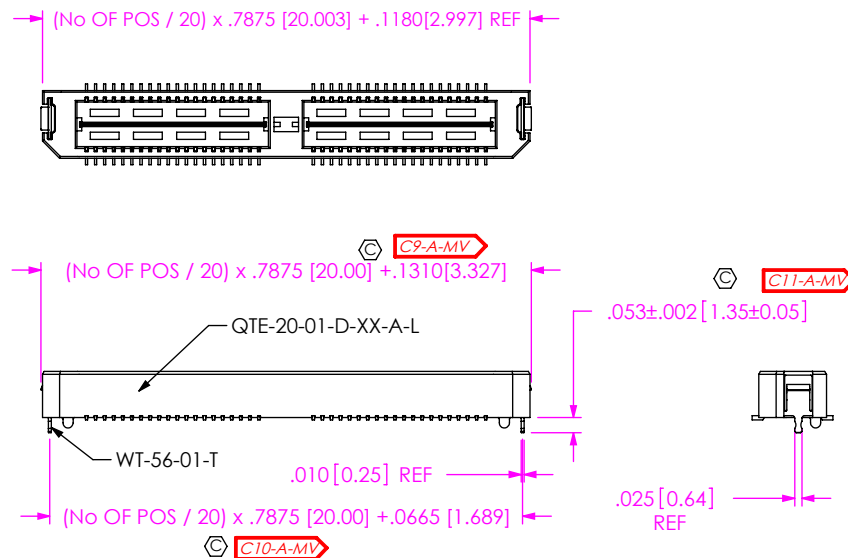
**FIG 10**  
 -TR: PACKAGING OPTION  
 (NOT AVAILABLE ON LEAD SYTTLES -05, -06, -07 & -08)  
 (SAME AS FIG 1, UNLESS OTHERWISE STATED)



USER DIRECTION OF UN-REELING  
 POCKET NOT DETAILED →



**FIG 11**  
 -L: LATCHING OPTION  
 (40 POS. MAX.)  
 (MUST USE -A OPTION)  
 (AVAILABLE ON -01 LEAD SYTLE ONLY)  
 (NOT AVAILABLE WITH -LC, -GP, -SD, -FL, OR -RT1)  
 (SAME AS FIG 1, UNLESS OTHERWISE STATED)



**BY**

CRITICAL DIMENSION INSPECTION INSTRUCTION TABLE	
ASSEMBLY OPERATION	IN PROCESS INSPECTION
FILL T-1SXX	C1, C2, C3, C4, C5, C12
ADD -RT1 OPTION	C6, C8
ADD -L OPTION	C9, C10, C11

**PROPRIETARY NOTE**

THIS DOCUMENT CONTAINS INFORMATION CONFIDENTIAL AND PROPRIETARY TO SAMTEC, INC. AND SHALL NOT BE REPRODUCED OR TRANSFERRED TO OTHER DOCUMENTS OR DISCLOSED TO OTHERS OR USED FOR ANY PURPOSE OTHER THAN THAT WHICH IT WAS OBTAINED WITHOUT THE EXPRESSED WRITTEN CONSENT OF SAMTEC, INC.

DO NOT SCALE DRAWING

SHEET SCALE: 1:0.8



520 PARK EAST BLVD, NEW ALBANY, IN 47150  
 PHONE: 812-944-6733 FAX: 812-948-5047  
 e-Mail: info@SAMTEC.com code 55322

DESCRIPTION:  
 .8mm DOUBLE ROW HS TERMINAL ASSEMBLY

DWG. NO. **QTE-XXX-XX-XXX-D-XXX**

BY: DEAN P 09-14-2010 SHEET 6 OF 6