

QTS-XXX-XX-XXX-D-RA-WT-XXX

No OF POSITIONS
 -025, -050, -075, -100
 [PER ROW]
 (SEE NOTE 5)

LEAD STYLE
 -01: .062 [1.57] BOARD
 -02: .093 [2.36] BOARD

PLATING SPECIFICATION
 (SEE TABLE 4, SHT 4)

ROW SPECIFICATION
 -D: DOUBLE (USE QTS-25-01-D-XX-RA)

OPTION
 -LS1: LOCKING SCREW
 (FOR MATING WITH QSS...-RA...-LS1)
 (USE WITH SP-18-01-TM SOLDER PIN)
 (SEE NOTE 11 & FIG 2, SHT 4)

-LS2: LOCKING SCREW
 (FOR MATING WITH QSS...-LS2)
 (USE WITH SP-18-01-TM SOLDER PIN)
 (SEE NOTE 11 & FIG 3, SHT 4)

-P: PICK AND PLACE PAD
 (USE PPP-63, SEE FIG 4, SHT 4)

-SP: SOLDER PIN
 (NOT AVAILABLE W/ LSX OPTIONS)
 (USE SP-19-T, SEE FIG 5, SHT 5)

-WT: WELD TAB
 (SEE NOTE 5, USE WT-16-XX-T)

-RA: RIGHT ANGLE

DO NOT
 SCALE FROM
 THIS PRINT

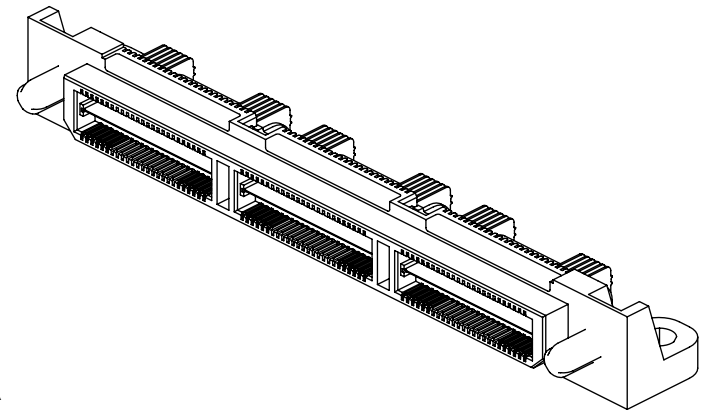
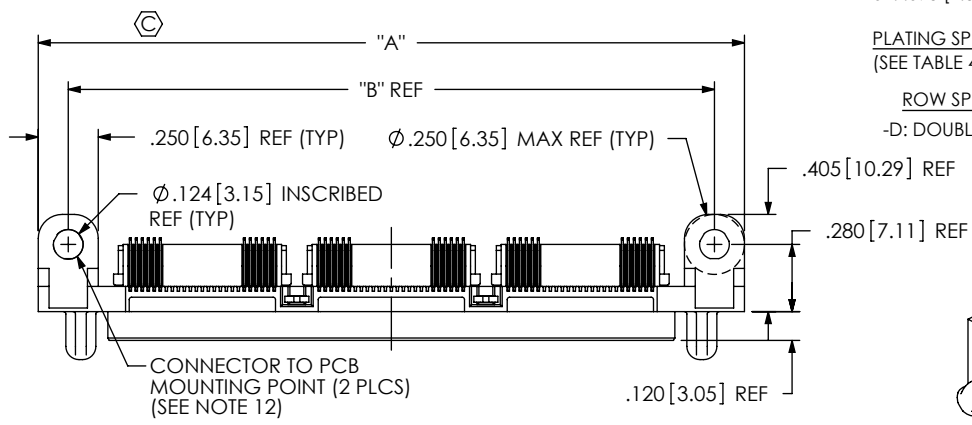


FIG 1
 QTS-075-01-XXX-D-RA-WT SHOWN
 (SOME CENTER DETAIL REMOVED FOR CLARITY)

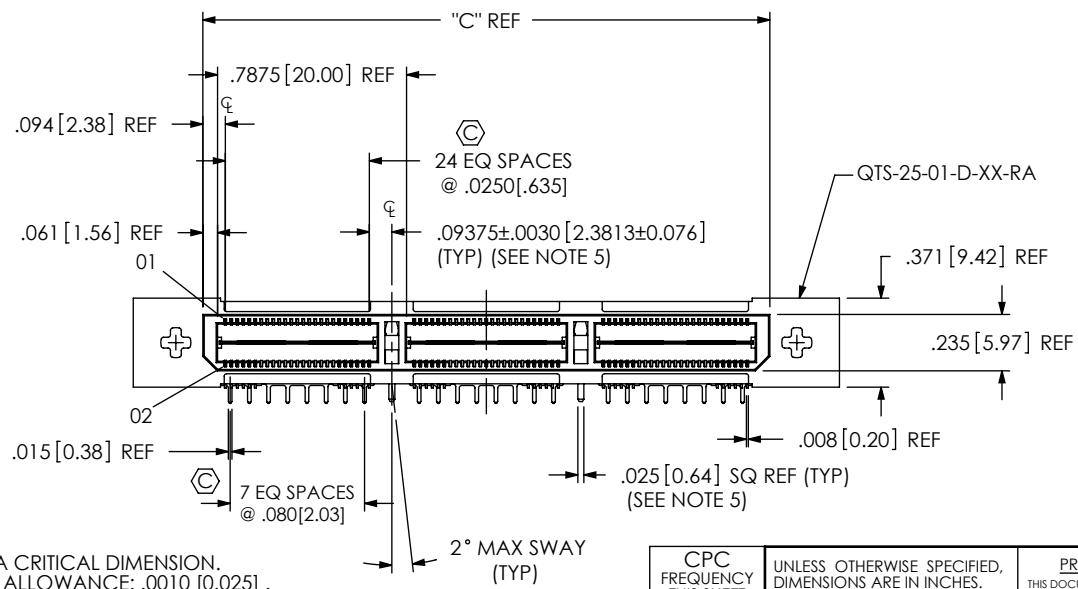


TABLE 1

POSITION	"A"	"B"	"C"	"D"
-025	1.368 [34.73]	1.118 [28.38]	0.788 [20.00]	0.396 [10.06]
-050	2.155 [54.74]	1.905 [48.39]	1.575 [40.01]	0.790 [20.07]
-075	2.943 [74.74]	2.693 [68.39]	2.363 [60.01]	1.184 [30.07]
-100	3.730 [94.74]	3.480 [88.39]	3.150 [80.01]	1.578 [40.07]

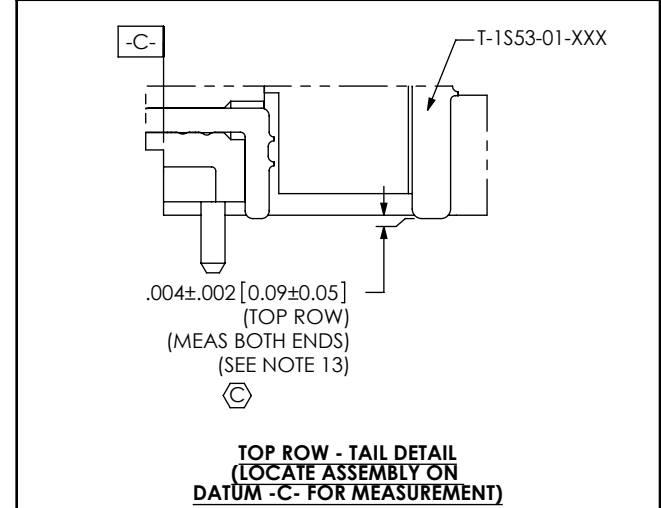
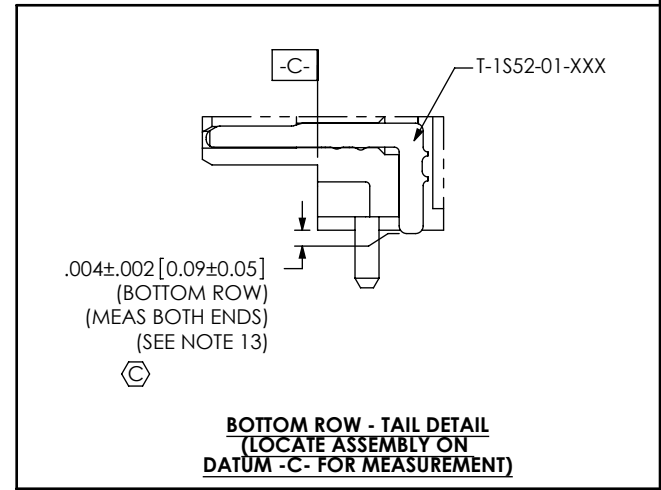
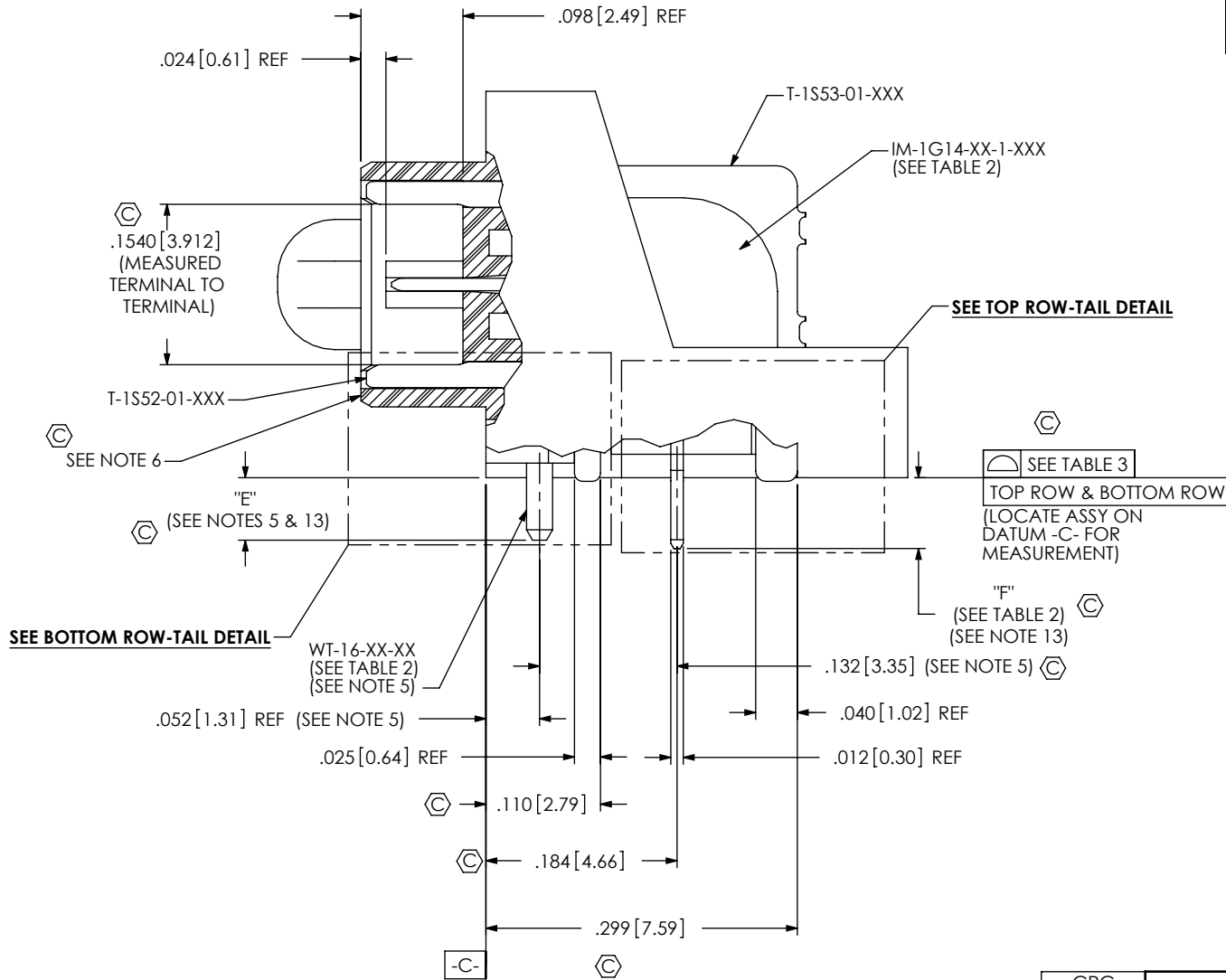
NOTES:

1. Ⓢ REPRESENTS A CRITICAL DIMENSION.
2. MAXIMUM BURR ALLOWANCE: .0010 [0.025] .
3. MINIMUM PUSHOUT FORCE: 5 OZ.
4. NOTE DELETED.
5. WELD TABS NOT AVAILABLE ON -025 POSITION.
6. TIPS OF TERMINALS MAY NOT EXTEND BEYOND THIS SURFACE.
7. IF NEEDED, -L PLATING CAN BE SUBSTITUTED FOR -F PLATING.
8. DESIGNED FOR USE WITH A .062 [1.57] OR .093 [2.36] THICK PCB.
9. PACKAGE IN TRAYS AS STANDARD.
10. NOTE DELETED.
11. MAXIMUM TORQUE ON STS-02 TO BE 20 IN-OZ.
12. TORQUE TO BE 10.0 IN-OZ USING 4-40 UNC SCREW.
13. USE -Z- DATUM ZONE ONLY FOR MEASUREMENTS.

CPC FREQUENCY THIS SHEET	A	C1	UNLESS OTHERWISE SPECIFIED, DIMENSIONS ARE IN INCHES. TOLERANCES ARE: DECIMALS ANGLES .XX: ±.01 [.3] .XXX: ±.005 [.13] .XXXX: ±.0020 [.051]	PROPRIETARY NOTE THIS DOCUMENT CONTAINS INFORMATION CONFIDENTIAL AND PROPRIETARY TO SAMTEC, INC. AND SHALL NOT BE REPRODUCED OR TRANSFERRED TO OTHER DOCUMENTS OR DISCLOSED TO OTHERS OR USED FOR ANY PURPOSE OTHER THAN THAT WHICH IT WAS OBTAINED WITHOUT THE EXPRESSED WRITTEN CONSENT OF SAMTEC, INC.	 520 PARK EAST BLVD., NEW ALBANY, IN 47150 PHONE: 812-944-6733 FAX: 812-948-5047 e-Mail: info@SAMTEC.com code 55322	
	B					MATERIAL: DO NOT SCALE DRAWING SHEET SCALE: 1:0.8
	C					INSULATOR: LCP, COLOR: BLACK TERMINAL, WELD TAB & GROUND PLANE: PHOS BRONZE SCREW: STEEL
	D					
DESCRIPTION: .635mm DOUBLE ROW RIGHT ANGLE TERMINAL STRIP						
DWG. NO. QTS-XXX-XX-XXX-D-RA-WT-XXX						
BY: KEVIN B 08/03/01			SHEET 1 OF 5			

TABLE 2				
LEAD STYLE	"E"	"F"	IM-1G14-XX-1-XXX	WT-16-XX-T
-01	.060[1.52]	.068[1.73]	IM-1G14-01-1-XXX	WT-16-01-T
-02	.125[3.18]	.125[3.18]	IM-1G14-02-1-XXX	WT-16-03-T

TABLE 3			
No OF POSITIONS	COPLANARITY	STRAIGHTNESS ROW 1	STRAIGHTNESS ROW 2
-025 THRU -075	.004[.10]	.004[.10]	.004[.10]
-100	.006[.15]	.006[.15]	.006[.15]




CPC FREQUENCY THIS SHEET	
A	
B	C4, C5, C6, C7, C9, C10, C11, C13, C18
C	
D	

PROPRIETARY NOTE
 THIS DOCUMENT CONTAINS INFORMATION CONFIDENTIAL AND PROPRIETARY TO SAMTEC, INC. AND SHALL NOT BE REPRODUCED OR TRANSFERRED TO OTHER DOCUMENTS OR DISCLOSED TO OTHERS OR USED FOR ANY PURPOSE OTHER THAN THAT WHICH IT WAS OBTAINED WITHOUT THE EXPRESSED WRITTEN CONSENT OF SAMTEC, INC.

DO NOT SCALE DRAWING

SHEET SCALE: 6:1



520 PARK EAST BLVD, NEW ALBANY, IN 47150
 PHONE: 812-944-6733 FAX: 812-948-5047
 e-Mail: info@SAMTEC.com code 55322

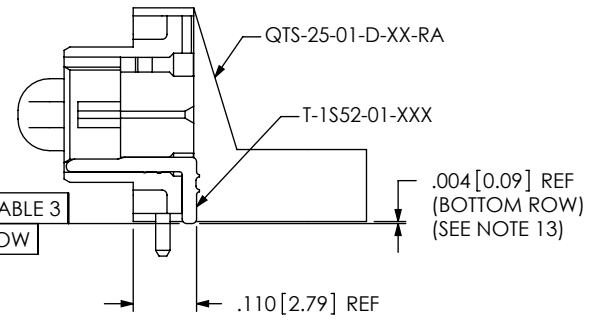
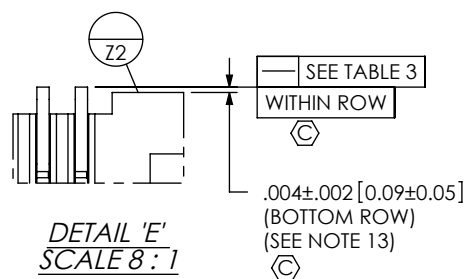
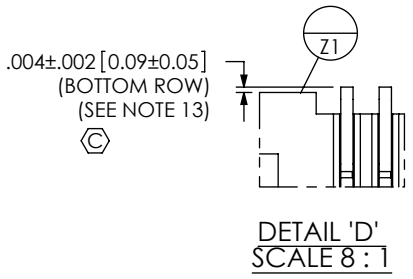
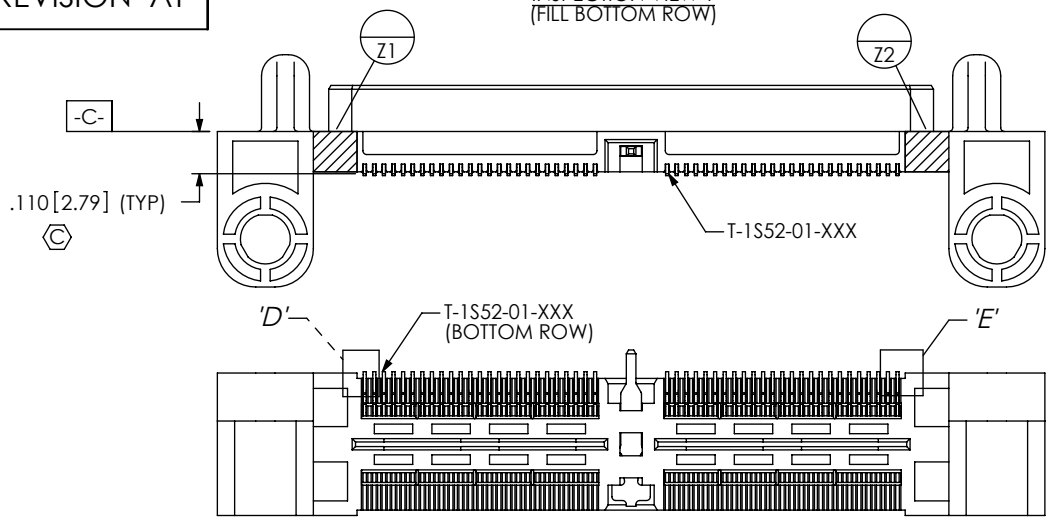
DESCRIPTION:
 .635mm DOUBLE ROW RIGHT ANGLE TERMINAL STRIP

DWG. NO.
QTS-XXX-XX-XXX-D-RA-WT-XXX

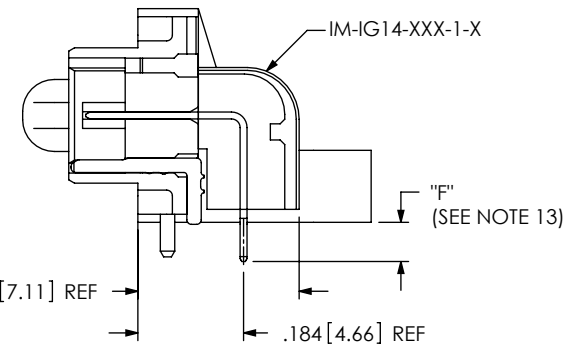
BY: KEVIN B 08/03/01 SHEET 2 OF 5

REVISION AT

INSPECTION VIEW 1
(FILL BOTTOM ROW)

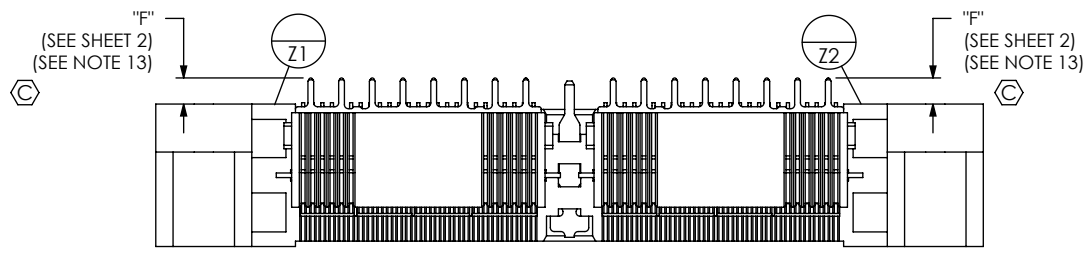
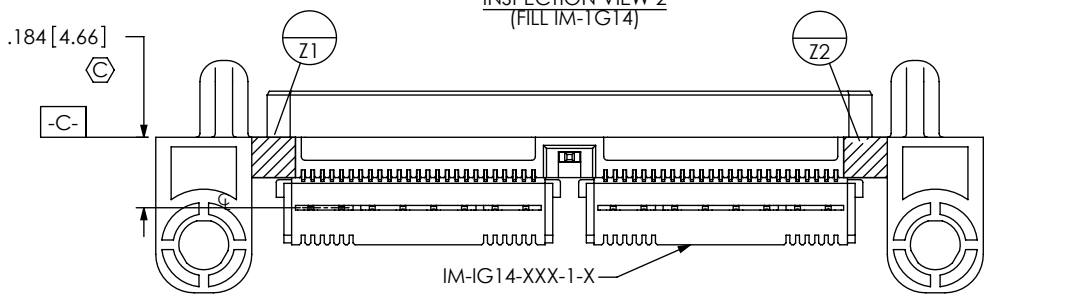


IN-PROCESS 1
(FILL BOTTOM ROW)
(SEE INSPECTION VIEW 1 FOR ORIENTATION AND CPC'S)



IN-PROCESS 2
(FILL IM-TG14)
(SEE INSPECTION VIEW 2 FOR ORIENTATION AND CPC'S)

INSPECTION VIEW 2
(FILL IM-TG14)



CPC FREQUENCY THIS SHEET	
A	C23
B	C7, C8, C18
C	
D	

PROPRIETARY NOTE
THIS DOCUMENT CONTAINS INFORMATION CONFIDENTIAL AND PROPRIETARY TO SAMTEC, INC. AND SHALL NOT BE REPRODUCED OR DISCLOSED TO OTHERS OR USED FOR ANY PURPOSE OTHER THAN THAT WHICH IT WAS OBTAINED WITHOUT THE EXPRESSED WRITTEN CONSENT OF SAMTEC, INC.

DO NOT SCALE DRAWING
SHEET SCALE: 6:1



520 PARK EAST BLVD, NEW ALBANY, IN 47150
PHONE: 812-944-6733 FAX: 812-948-5047
e-Mail: info@SAMTEC.com code 55322

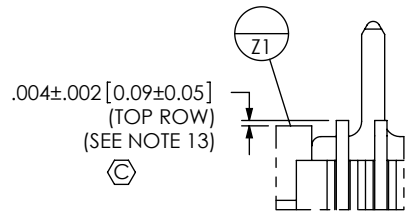
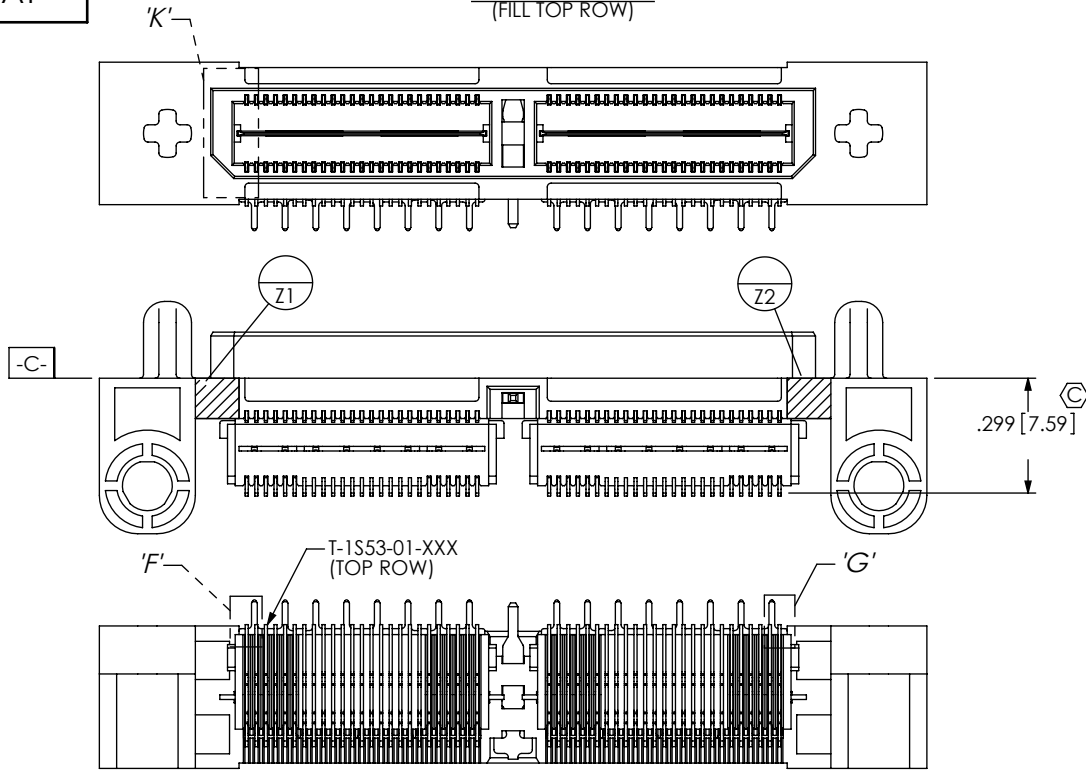
DESCRIPTION:
.635mm DOUBLE ROW RIGHT ANGLE TERMINAL STRIP

DWG. NO.
QTS-XXX-XX-XXX-D-RA-WT-XXX

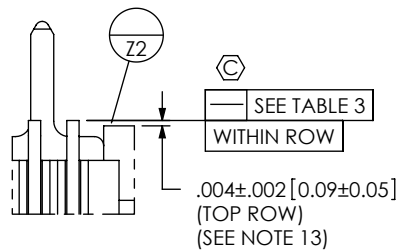
BY: KEVIN B 08/03/01 SHEET 3 OF 5

REVISION AT

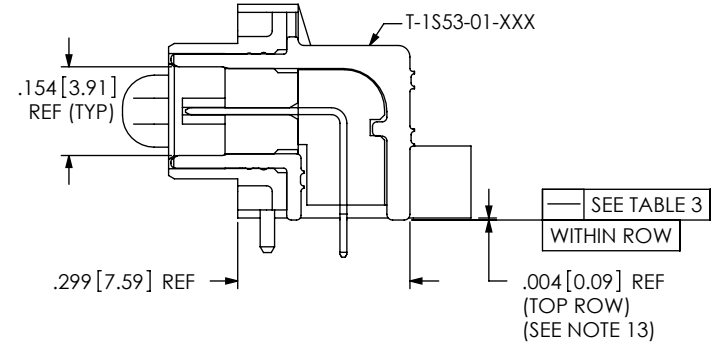
INSPECTION VIEW 3
(FILL TOP ROW)



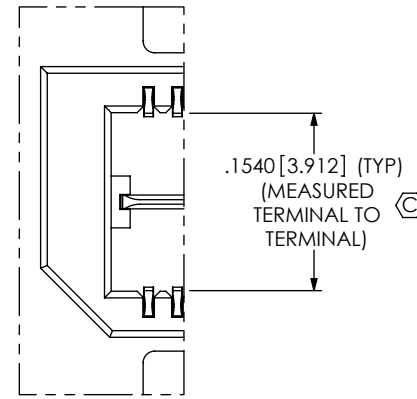
DETAIL 'F'
SCALE 8:1



DETAIL 'G'
SCALE 8:1



IN-PROCESS 3
(FILL TOP ROW)
(SEE INSPECTION VIEW 3 FOR ORIENTATION AND CPC'S)



DETAIL 'K'
SCALE 6:1

TABLE 4: PLATING SPECIFICATIONS (SEE NOTE 7)

	CONTACT	CONTACT	GROUND PLANE
-F	T-1S52-01-F: 3μ" FLASH GOLD CONTACT, MATTE TIN TAIL	T-1S53-01-F: 3μ" FLASH GOLD CONTACT, MATTE TIN TAIL	IM-1G14-XX-F: 3μ" FLASH GOLD CONTACT, MATTE TIN TAIL
-L	T-1S52-01-L: 10μ" LIGHT GOLD CONTACT, MATTE TIN TAIL	T-1S53-01-L: 10μ" LIGHT GOLD CONTACT, MATTE TIN TAIL	IM-1G14-XX-L: 10μ" LIGHT GOLD CONTACT, MATTE TIN TAIL
-H	T-1S52-01-H: 30μ" HEAVY GOLD CONTACT, 3μ" FLASH GOLD TAIL	T-1S53-01-H: 30μ" HEAVY GOLD CONTACT, 3μ" FLASH GOLD TAIL	IM-1G14-XX-L: 10μ" LIGHT GOLD CONTACT, MATTE TIN TAIL
-STL	T-1S52-01-STL: 30μ" SELECTIVE GOLD CONTACT, TIN/LEAD (90/10 +/-5%) TAIL	T-1S53-01-STL: 30μ" SELECTIVE GOLD CONTACT, TIN/LEAD (90/10 +/-5%) TAIL	IM-1G14-XX-STL: 30μ" SELECTIVE GOLD CONTACT, TIN/LEAD (90/10 +/-5%) TAIL
-FTL	T-1S52-01-FTL: 3μ" FLASH GOLD CONTACT, TIN/LEAD (90/10 +/-5%) TAIL	T-1S53-01-FTL: 3μ" FLASH GOLD CONTACT, TIN/LEAD (90/10 +/-5%) TAIL	IM-1G14-XX-FTL: 3μ" FLASH GOLD CONTACT, TIN/LEAD (90/10 +/-5%) TAIL

CPC FREQUENCY THIS SHEET	
A	C23
B	C4, C9, C13
C	
D	

PROPRIETARY NOTE
THIS DOCUMENT CONTAINS INFORMATION CONFIDENTIAL AND PROPRIETARY TO SAMTEC, INC. AND SHALL NOT BE REPRODUCED OR TRANSFERRED TO OTHER DOCUMENTS OR DISCLOSED TO OTHERS OR USED FOR ANY PURPOSE OTHER THAN THAT WHICH IT WAS OBTAINED WITHOUT THE EXPRESSED WRITTEN CONSENT OF SAMTEC, INC.

DO NOT SCALE DRAWING

SHEET SCALE: 1.5:1

520 PARK EAST BLVD, NEW ALBANY, IN 47150
PHONE: 812-944-6733 FAX: 812-948-5047
e-Mail: info@SAMTEC.com code 55322

DESCRIPTION:
.635mm DOUBLE ROW RIGHT ANGLE TERMINAL STRIP

DWG. NO.
QTS-XXX-XX-XXX-D-RA-WT-XXX

BY: KEVIN B 08/03/01 SHEET 4 OF 5

Ø.100 [2.54] REF
(STS SCREW REMOVED FOR CLARITY)

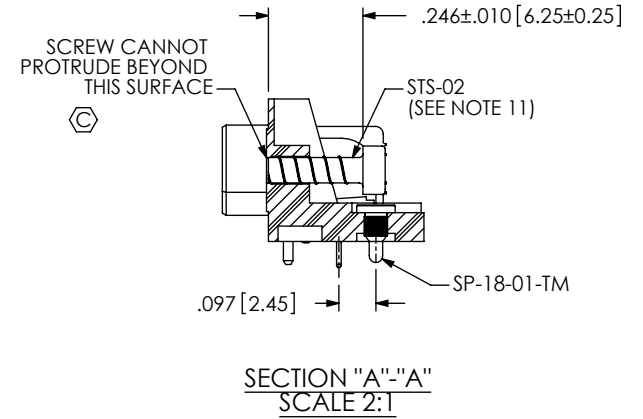
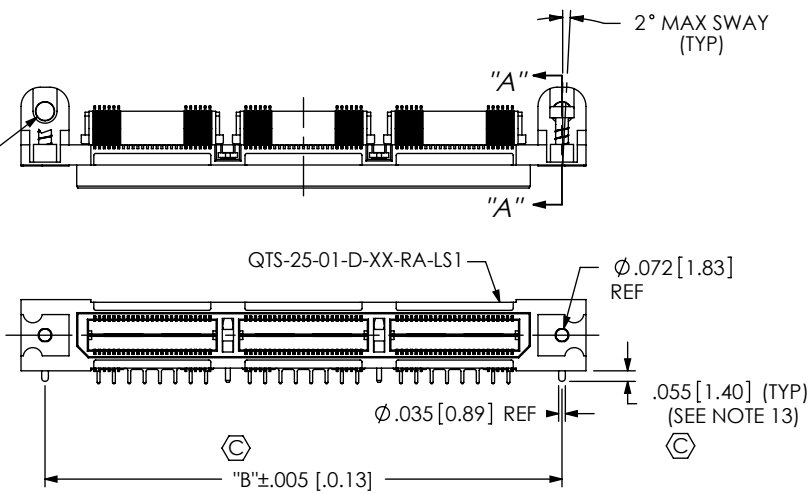


FIG 2
-LS1 OPTION
(QTS-075-01-XXX-D-RA-WT-LS1 SHOWN)
(SAME AS FIG 1, EXCEPT AS SHOWN)
(AVAILABLE ON -01 LEADSTYLE ONLY)

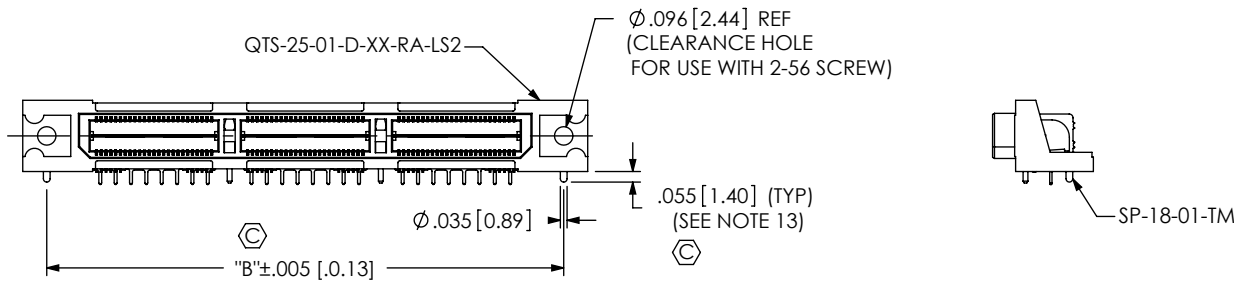


FIG 3
-LS2 OPTION
(QTS-075-01-XXX-D-RA-WT-LS2 SHOWN)
(SAME AS FIG 2, EXCEPT AS SHOWN)

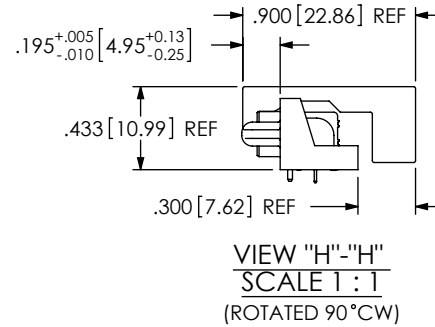
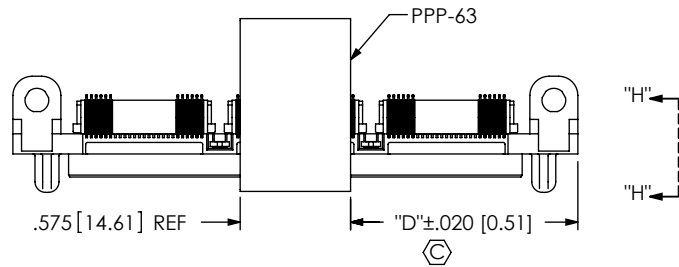


FIG 4
-P OPTION
(QTS-075-01-XXX-D-RA-WT-P SHOWN)
(SAME AS FIG 1, EXCEPT AS SHOWN)

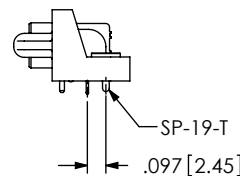
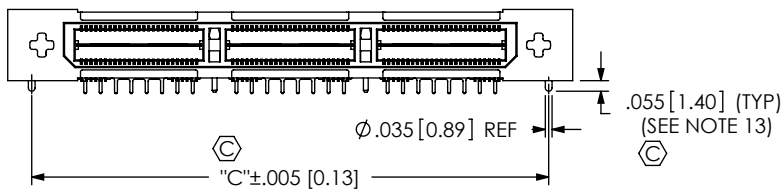


FIG 5
-SP OPTION
(QTS-075-01-XXX-D-RA-WT-SP SHOWN)
(SAME AS FIG 1, EXCEPT AS SHOWN)

CPC FREQUENCY THIS SHEET	
A	
B	C14, C15, C19, C20
C	
D	

PROPRIETARY NOTE
THIS DOCUMENT CONTAINS INFORMATION CONFIDENTIAL AND PROPRIETARY TO SAMTEC, INC. AND SHALL NOT BE REPRODUCED OR TRANSFERRED TO OTHER DOCUMENTS OR DISCLOSED TO OTHERS OR USED FOR ANY PURPOSE OTHER THAN THAT WHICH IT WAS OBTAINED WITHOUT THE EXPRESSED WRITTEN CONSENT OF SAMTEC, INC.

DO NOT SCALE DRAWING

SHEET SCALE: 1.5:1



520 PARK EAST BLVD, NEW ALBANY, IN 47150
PHONE: 812-944-6733 FAX: 812-948-5047
e-Mail: info@SAMTEC.com code 55322

DESCRIPTION:
.635mm DOUBLE ROW RIGHT ANGLE TERMINAL STRIP

DWG. NO.
QTS-XXX-XX-XXX-D-RA-WT-XXX

BY: KEVIN B 08/03/01 SHEET 5 OF 5