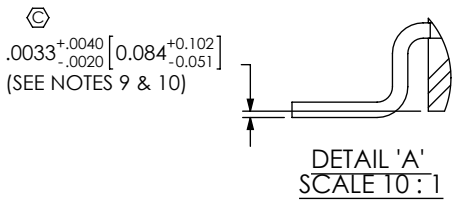


DO NOT SCALE FROM THIS PRINT



SIB-1XX-XX-XX-S-XX-XX

NO OF POSITIONS
-02 THRU -30
(PER ROW)

LEAD STYLE
-02: SURFACE MOUNT
(USE C-228-X)

PLATING SPECIFICATION
-F: FLASH SELECTIVE
(USE C-228-F)
-FM: FLASH SELECTIVE, PURE TIN,
MATTE FINISH
(USE C-228-F)

THREADED INSERT OPTION
[NOT AVAILABLE ON 30 POS]
* -E: TI-2-56-115 (ENGLISH)
* -M: TI-M2-4-115-N (METRIC)
(SEE FIG. 2, SHEET 2)
* -TI: NO INSERTS PLACED IN BODY
(SEE TABLE 1 ON SHEET 2 FOR
-TI POSITIONAL OFFERINGS)

OPTION
-LC: LOCKING CLIPS
(USE LC-09-TM) (SEE NOTE 13)
[N/A WITH THREADED INSERT OPTION
-E, -M OR -TI]

ROW SPECIFICATION
-S: SINGLE (USE SIBC-XX-02-S)

* AVAILABLE TO EXISTING CUSTOMERS ONLY

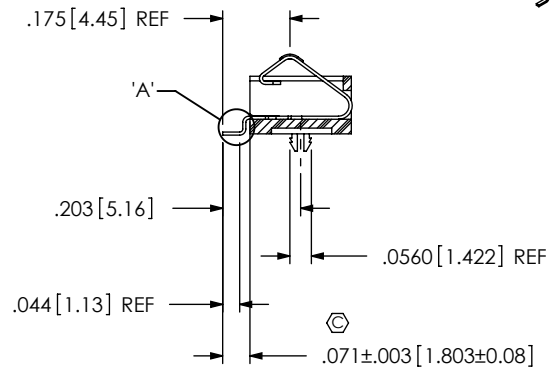
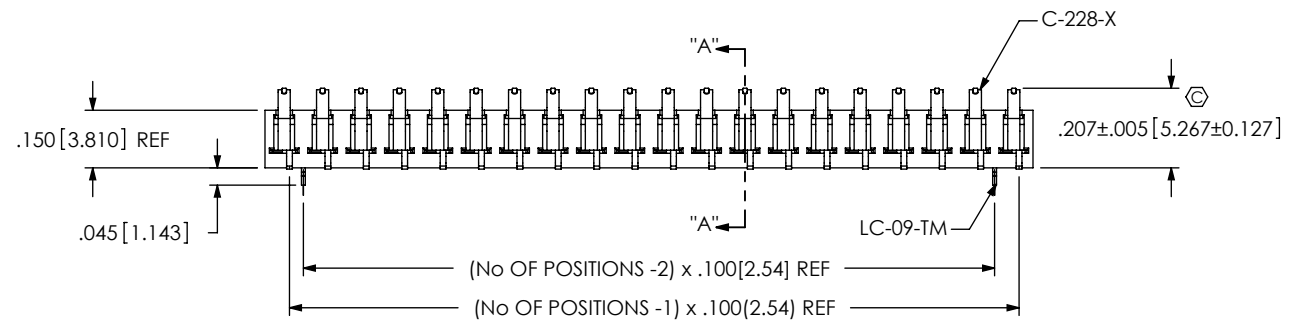
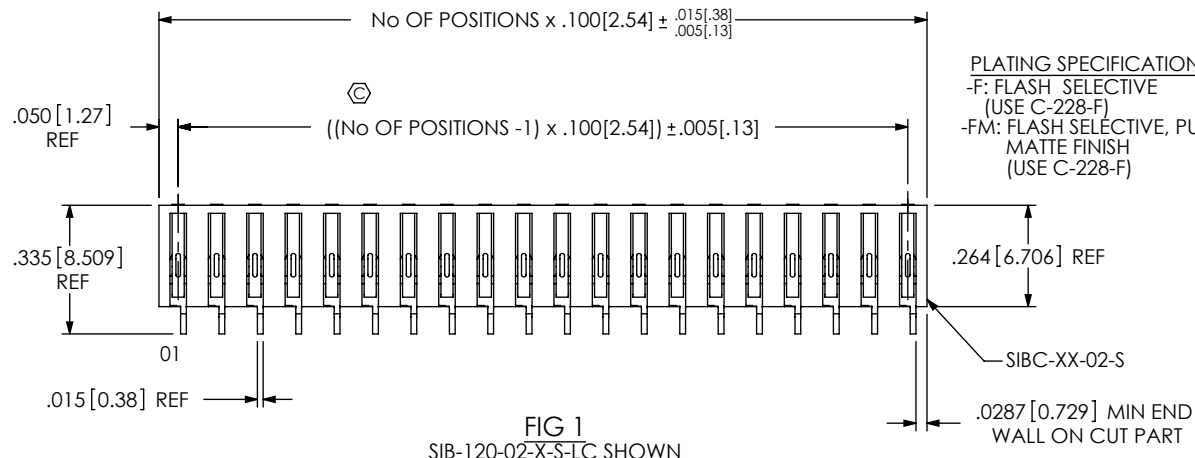
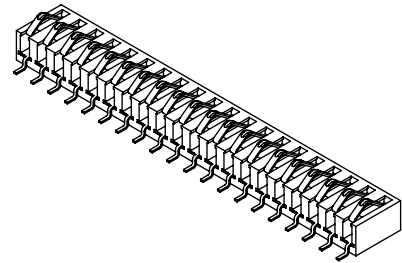


TABLE 2: COPLANARITY

POSITIONS	"A"
-02 THRU -19	.004[.10]
-20 THRU -30	.006[.15]

NOTES:

1. Ⓢ REPRESENTS A CRITICAL DIMENSION.
2. COPLANARITY: SEE TABLE 2.
3. BURR ALLOWANCE: .0015[.038] MAX.
4. MAXIMUM CUT FLASH: .010[.3], CAN NOT EXTEND PAST TAIL.
5. MINIMUM PUSHOUT FORCE: 1 LB.
6. MAXIMUM ALLOWABLE BOW: .004[.10] INCH/INCH AFTER ASSEMBLY.
7. THREADED INSERT MUST HANDLE 25 IN-OZ OF TORQUE WITHOUT ROTATING OR LOOSENING.
8. THREADED INSERT RETENTION: 10 LBS. MINIMUM.
9. MAX VARIATION FROM PIN TO PIN TO BE .002.
10. MEASURED ON UNCUT PARTS.
11. NOTE DELETED.
12. NOTE DELETED.
13. DUE TO THE HIGH AMOUNT OF INSERTION FORCE NEEDED, THE -LC OPTION IS NOT COMPATIBLE WITH AUTO PLACEMENT. SAMTEC RECOMMENDS MANUAL PLACEMENT FOR ALL ASSEMBLIES WITH THE -LC OPTION.

UNLESS OTHERWISE SPECIFIED, DIMENSIONS ARE IN INCHES. TOLERANCES ARE: DECIMALS ANGLES .XX: ±.01 [.3] 2° .XXX: ±.005 [.13] .XXXX: ±.0020 [.051]	PROPRIETARY NOTE THIS DOCUMENT CONTAINS INFORMATION CONFIDENTIAL AND PROPRIETARY TO SAMTEC, INC. AND SHALL NOT BE REPRODUCED OR TRANSFERRED TO OTHER DOCUMENTS OR DISCLOSED TO OTHERS OR USED FOR ANY PURPOSE OTHER THAN THAT WHICH IT WAS OBTAINED WITHOUT THE EXPRESSED WRITTEN CONSENT OF SAMTEC, INC.		
		520 PARK EAST BLVD, NEW ALBANY, IN 47150 PHONE: 812-944-6733 FAX: 812-948-5047 e-Mail: info@SAMTEC.com code 55322	
MATERIAL: DO NOT SCALE DRAWING SHEET SCALE: 2:1 INSULATOR: LCP, COLOR: BLACK CONTACT: PHOSPHOR BRONZE		DESCRIPTION: .100 SINGLE INTERFACE BEAM ASSEMBLY	
DWG. NO. SIB-1XX-XX-XX-S-XX-XX		BY: DEAN P 9/20/2000 SHEET 1 OF 2	

FIG 2
SIB-120-02-X-S-E SHOWN

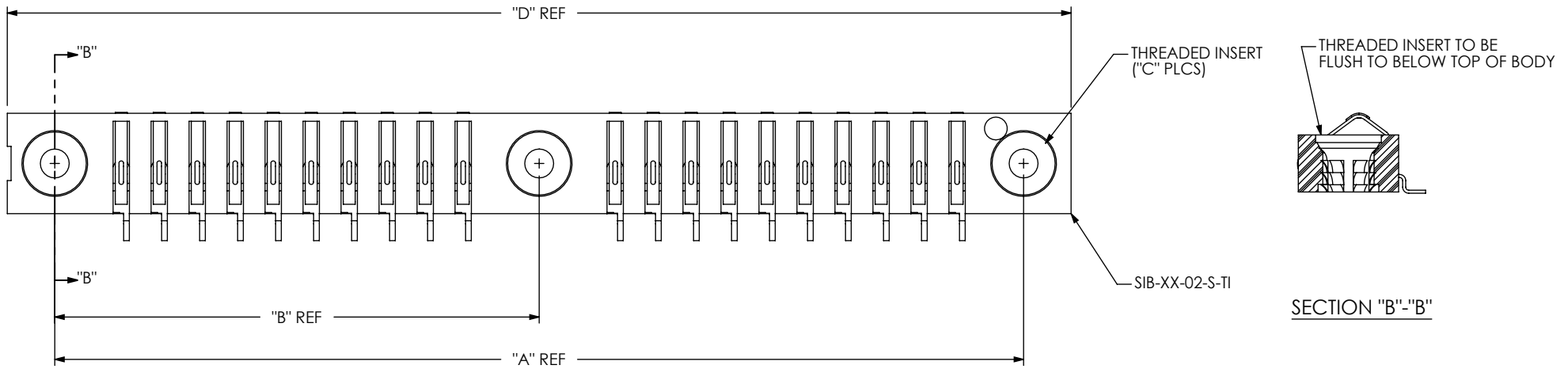
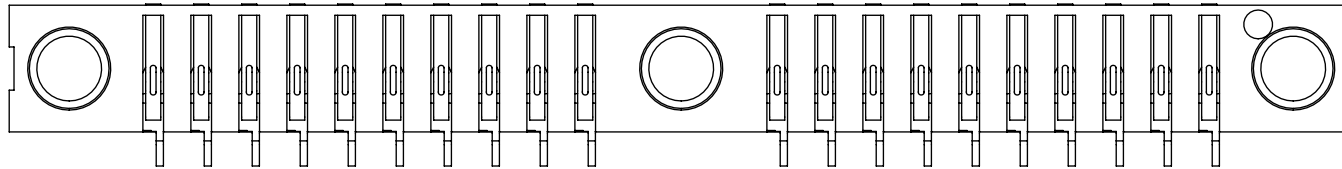
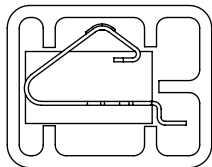


FIG 3
SIB-120-02-X-S-TI SHOWN



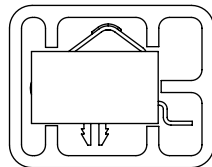
PACKAGING VIEW
(PARTS TO HAVE POSITION #1 LOADED IN
SAME DIRECTION AS ARROW ON TUBE)

NO -LC OPTION



TUBE: PT-1-24-01-118
PLUG: TP-03

-LC OPTION



TUBE: PT-1-24-01-118
PLUG: TP-03

TABLE 1: THREADED INSERT OPTION

POS	"A"	"B"	"C"	"D"
-05	.750[19.05]	N/A	2	1.000[25.40]
-10	1.250[31.75]	N/A	2	1.500[38.10]
-15	1.750[44.45]	N/A	2	2.000[50.80]
-20	2.550[64.77]	1.275[32.39]	3	2.800[71.12]
-25	3.050[77.47]	1.475[37.47]	3	3.300[83.82]

F:\DWG\MISC\MKTG\SIB-1XX-XX-XX-S-XX-MKT.SLDDRW

PROPRIETARY NOTE

THIS DOCUMENT CONTAINS INFORMATION
CONFIDENTIAL AND PROPRIETARY TO
SAMTEC, INC. AND SHALL NOT BE REPRODUCED OR
DISCLOSED TO OTHERS OR USED FOR ANY
PURPOSE OTHER THAN THAT WHICH IT WAS
OBTAINED WITHOUT THE EXPRESSED WRITTEN
CONSENT OF SAMTEC, INC.

DO NOT SCALE DRAWING

SHEET SCALE: 2.5:1



520 PARK EAST BLVD, NEW ALBANY, IN 47150
PHONE: 812-944-6733 FAX: 812-948-5047
e-Mail info@SAMTEC.com code 55322

DESCRIPTION:
.100 SINGLE INTERFACE BEAM ASSEMBLY

DWG. NO.
SIB-1XX-XX-XX-S-XX-XX

BY: DEAN P 9/20/2000 SHEET 2 OF 2