

REVISION AU

DO NOT SCALE FROM THIS PRINT

FIG. 1

-01: THROUGH HOLE

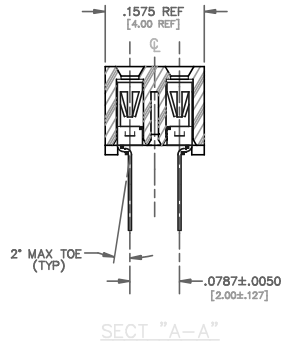
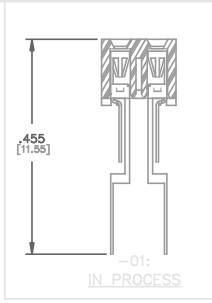
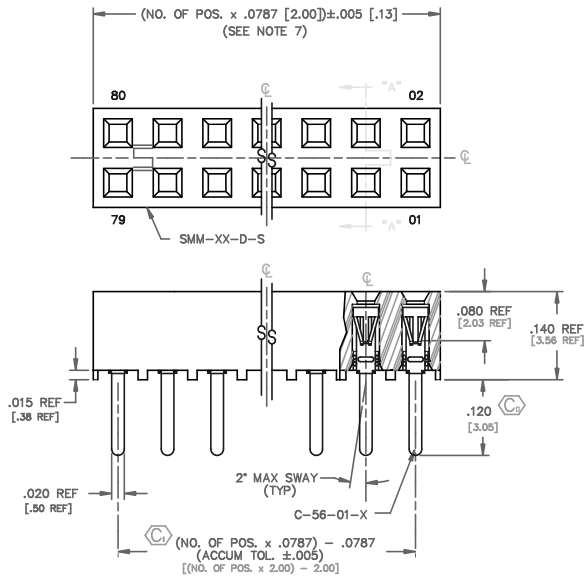
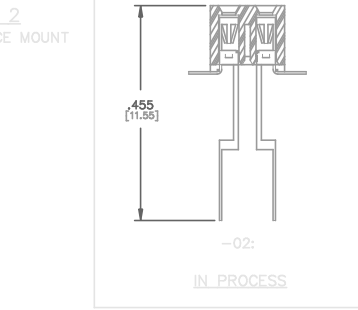
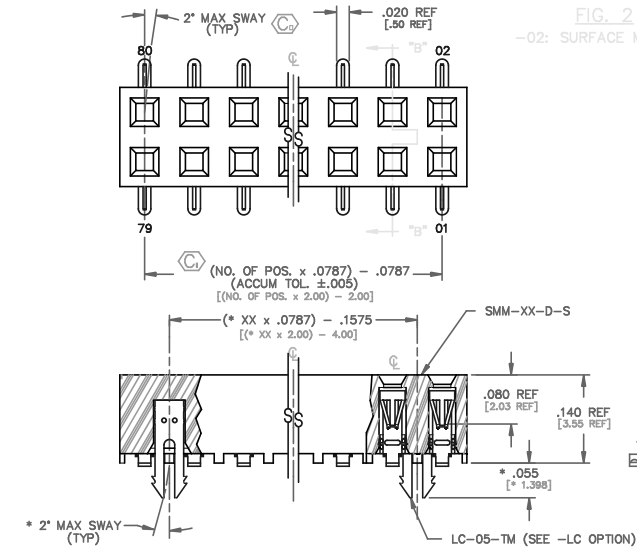


FIG. 2

-02: SURFACE MOUNT



SECT "B-B"

DIMENSIONS ARE IN INCHES		UNLESS OTHERWISE NOTED		TOLERANCES ARE:		TITLE:		DWG NO:	
ONE PLACE DECIMALS: ± .1	THREE PLACE DECIMALS: ± .005	ANGLES		± 1°		2 mm SOCKET STRIP		SMM-1XX-XX-XX-D-XX-XX-X-XX	
TWO PLACE DECIMALS: ± .01	FOUR PLACE DECIMALS: ± .0020							SHEET 1 OF 2	

NOTES:

- RETENTION FORCE IN BODY TO BE: 1 lbs. MIN
- INSERTION FORCE TO BE: 3.0 oz. MAX.
- WITHDRAWAL FORCE TO BE: 0.5 oz. MIN.
- ⊗ REPRESENTS CRITICAL DIMS. FOR STATISTICAL PROCESS CONTROL.
- ⊗ DIMS ARE IN METRIC AND ARE NOT CONTROLLING DIMS.
- LC OPTION FOR A 02 POSITION WILL HAVE ONLY ONE LOCKING CLIP (LC-05-T).
- "END WALLS" AFTER CUTTING SHOULD BE .017 ± .005.
- FOR -01 LEAD STYLE, LAYER PACKAGE POSITIONS -01 THRU -04.
- FOR -02 LEAD STYLE WITHOUT PICK & PLACE PAD, LAYER PACKAGE POSITION -02 ONLY.
- 02 THRU -05 POSITION WITH -K OR -P TO BE PACKAGED IN -TR ONLY. -06 THRU -40 POSITION AVAILABLE IN TUBE OR -TR PACKAGING.
- .010" MAX CUT FLASH.
- NO FLASH ALLOWED IN SOCKET OR EXTENDING BELOW LEADS.
- DUE TO THE HIGH AMOUNT OF INSERTION FORCE NEEDED, THE -LC OPTION IS NOT COMPATIBLE WITH AUTO PLACEMENT. SAMTEC RECOMMENDS MANUAL PLACEMENT FOR ALL ASSEMBLIES WITH THE -LC OPTION.
- INSULATOR MATERIAL: BLACK, LCP, UL 94 V0

SMM-1XX-XX-XX-D-XX-XX-X-XX

NO. OF POS. PER ROW  
 THROUGH HOLE: -01 THRU -40  
 SURFACE MOUNT: -02 THRU -40

LEAD STYLE  
 -01: THROUGH HOLE (C-56-01-X)  
 -02: SURFACE MOUNT (C-56-02-X)

PLATING OPTION  
 -S: SELECTIVE, 30 Au / 50 NI NICKEL ON CONTACT, MATTE TIN TAIL  
 -F: FLASH SELECTIVE, 3 Au / 50 NI MIN ON CONTACT, MATTE TIN TAIL  
 -H: HEAVY GOLD, 30 Au / 50 NI MIN ON CONTACT, 3 Au / 50 NI MIN ON TAIL  
 -SM: SELECTIVE, 30 Au / 50 NI MIN ON CONTACT, MATTE TIN TAIL  
 -FM: FLASH SELECTIVE, 3 Au / 50 NI MIN ON CONTACT, MATTE TIN TAIL  
 -L: LIGHT SELECTIVE, 10 Au / 50 NI MIN ON CONTACT, MATTE TIN TAIL

ROW OPTION  
 -D: DOUBLE ROW (USE SMM-XX-D-S)

OPTION TAPE & REEL  
 MAX. POSITIONS AVAILABLE:  
 27 VERTICAL / 28 HORIZONTAL (SEE SHEET 2)

OPTION 2  
 -P: PICK AND PLACE PAD (USE PPP-03) (SEE FIG 3)  
 -K: POLYAMIDE FILM PAD (USE K-DOT-217-313-.005) (.005±.13) THICKNESS, SEE FIG 4 (2 POS MIN, SEE NOTE 10) (AVAILABLE ON LEAD STYLE -02 ONLY)

OPTION 1  
 -LC: LOCKING CLIP (USE 2 LC-05-TM) (AVAILABLE ONLY WITH LEAD STYLE -02, SEE \* DIMS, SEE NOTE 6 & 13, SEE FIG 2)  
 -POLARIZING OPTION INDICATE POSITION (USE PK-07-N)

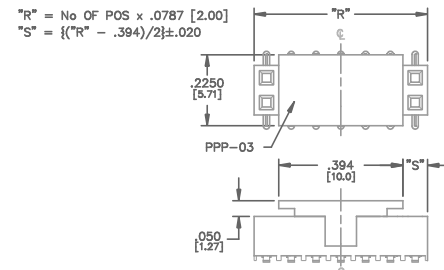


FIG. 3

-P: PICK AND PLACE PAD (PLACE PPP-03 ABOUT C.L. AS SHOWN) (SEE NOTE 10)

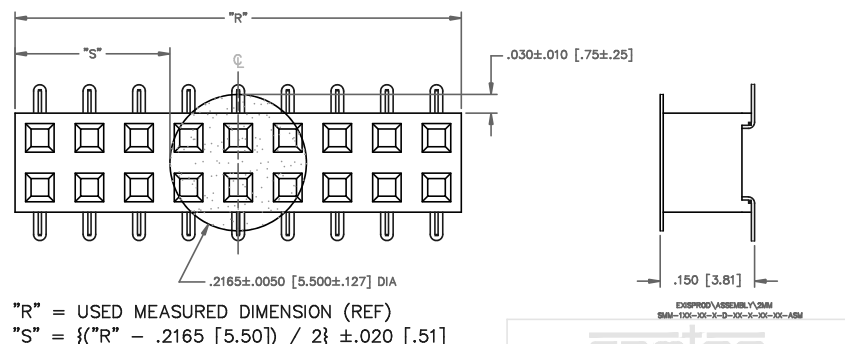


FIG. 4

-K: POLYAMIDE FILM PAD [2 POSITION MINIMUM, SEE NOTE 10]

PROPRIETARY NOTE  
 This document contains information that is the property of Samtec Inc. and is intended for use only by the recipient. No part of this document may be reproduced or transmitted in any form or by any means, electronic or mechanical, including photocopying, recording, or by any information storage and retrieval system, without the prior written consent of Samtec Inc.

EXEPROD/ASSEMBLY/SMM  
 SMM-100-00-X-D-XX-XX-XX-XX-ASM

samtec

520 PARK EAST BLVD. NEW ALBANY, INDIANA 47150  
 PHONE (812) 944-6733 P.O. BOX 1147  
 CODE 95322

MADE BY: KOLB 5-21-91  
 APPROVAL: DEM

SMM-1XX-XX-XX-D-XX-XX-X-XX  
 SHEET 1 OF 2