

NOTES:

1.  $\odot$  REPRESENTS A CRITICAL DIMENSION.
2. MINIMUM CONTACT RETENTION: 12 OZS.
3. MINIMUM LOCKING CLIP RETENTION: 8 OZS.
4. MAXIMUM HEIGHT VARIATION BETWEEN ANY TWO PINS: .005[0.13].
5. MAXIMUM TERMINAL BURR: .003[0.08].
6. COPLANARITY: .004[0.10] = POS 02 THRU 26  
.006[0.15] = POS 27 THRU 50.
7. MEASURED FROM BEND.
8. MEASURE FROM TIPS OF PIN.
9. SIDES OF PLASTIC BODIES ON ALL LEAD STYLES EXCEPT THE -01 & -02 WILL BE SOLID AND WITHOUT SIDE SLOTS.
10. THIS FEATURE ONLY PRESENT ON -01 & -02 LEAD STYLES.
11. DUE TO THE HIGH AMOUNT OF INSERTION FORCE NEEDED, THE -LC OPTION IS NOT COMPATIBLE WITH AUTO PLACEMENT. SAMTEC RECOMMENDS MANUAL PLACEMENT FOR ALL ASSEMBLIES WITH THE -LC OPTION.
12. VOIDS AT KEYING NOTCH LOCATION MAY BE BLIND AT VENDOR'S DISCRETION FOR -01 & -02 LEAD STYLES.

DO NOT SCALE FROM THIS PRINT

TFC-1XX-XX-XX-D-XX

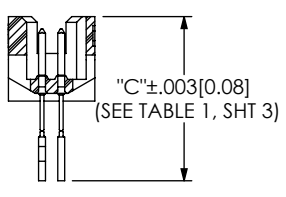
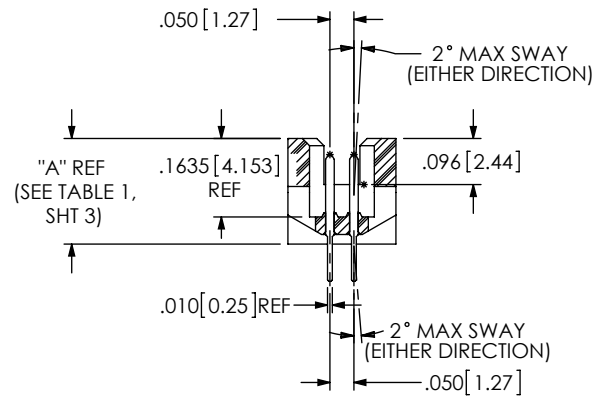
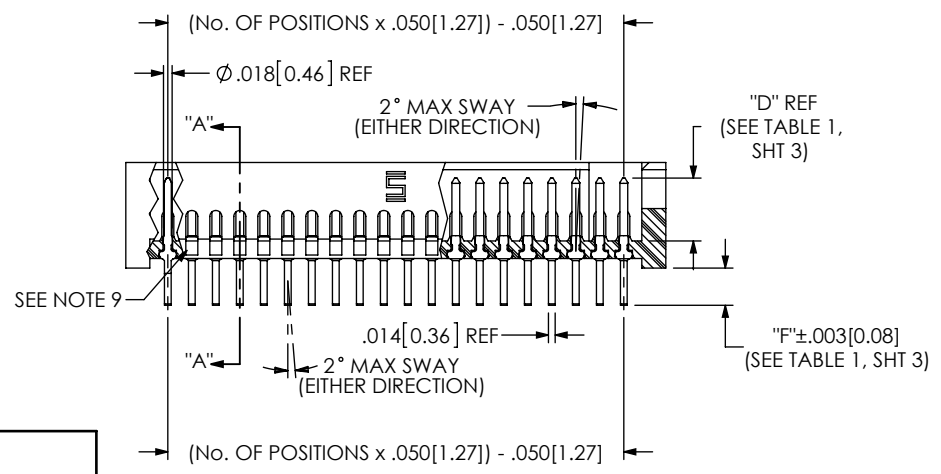
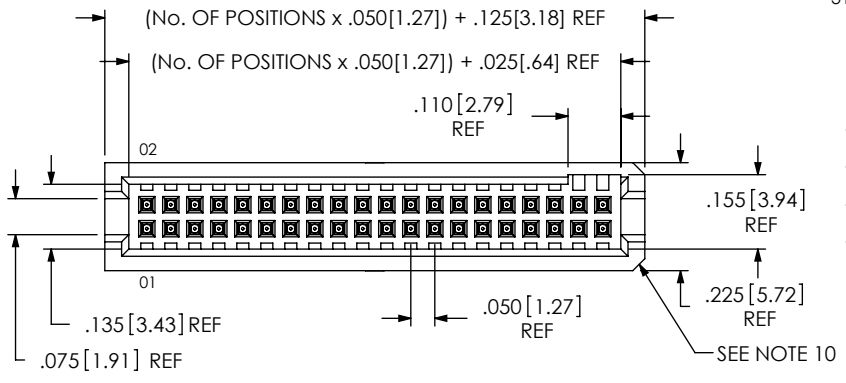
**No OF POSITIONS**  
 LEAD STYLE -01, -02: -02 THRU -50 (ALL POSITIONS AVAILABLE)  
 LEAD STYLES -11, -12: (-05 THRU -50 MULTIPLES OF 5) POSITIONS -12, -16, -17 ALSO AVAILABLE  
 LEAD STYLES -21, -22: (-05 THRU -50 MULTIPLES OF 5) POSITIONS -12 & -13 ALSO AVAILABLE  
 LEAD STYLES -31, -32: (-05 THRU -50 MULTIPLES OF 5) -12 POSITION ALSO AVAILABLE

**LEAD STYLE**  
 THROUGH HOLE SURFACE MOUNT  
 -01 (SEE FIG 1) -02 (SEE FIG 2, SHT 2)  
 -11 (SEE FIG 1) -12 (SEE FIG 2, SHT 2)  
 -21 (SEE FIG 1) -22 (SEE FIG 2, SHT 2)  
 -31 (SEE FIG 1) -32 (SEE FIG 2, SHT 2)  
 (SEE TABLE 1, SHT 3)

**OPTION**  
 -A: ALIGNMENT PIN (USE TFM-XX-D-XX-A, SEE TABLE 1, SHT 3) (SEE FIG 5, SHT 3) (NOT AVAILABLE WITH -RA)  
 -LC: LOCKING CLIP (USE LC-05-TM) (NOT AVAILABLE WITH -RA) (SEE FIG 6, SHT 3, NOTE 3 & 11)  
 -P: PICK AND PLACE PAD (USE PPP-04) (AVAILABLE IN ALL POSITIONS -05 THRU -50) (NOT AVAILABLE WITH -RA) (SEE FIG 7, SHT 3)  
 -RA: RIGHT ANGLE (AVAILABLE ONLY IN LEAD STYLE: -01) (SEE FIG 8, SHT 2)  
 -TR: TAPE AND REEL (SEE FIG 4, SHT 4) (FOR -X2 ONLY) (NOT AVAILABLE WITH -RA)  
 -K: POLYIMIDE FILM (SEE FIG 3, SHT 2) (ALL LEAD STYLES EXCEPT -21 AVAILABLE) (NOT AVAILABLE FOR -RA) (USE K-DOT-.217-.313-.005)

**PLATING SPECIFICATION**  
 -F: 3 $\mu$ " FLASH GOLD ON CONTACT AREA, MATTE TIN TAIL  
 -L: 15 $\mu$ " SELECTIVE GOLD ON CONTACT AREA, MATTE TIN TAIL  
 -LM: 15 $\mu$ " SELECTIVE GOLD ON CONTACT AREA, MATTE TIN TAIL  
 -FM: 3 $\mu$ " FLASH GOLD ON CONTACT AREA, MATTE TIN TAIL

**BODY SPECIFICATION**  
 -D: DOUBLE ROW



IN-PROCESS

FIG 1 THROUGH HOLE -01, -11, -21, -31

UNLESS OTHERWISE SPECIFIED, DIMENSIONS ARE IN INCHES.  
 TOLERANCES ARE:  
 DECIMALS ANGLES  
 .XX: ±.01 [.3] 2°  
 .XXX: ±.005 [.13]  
 .XXXX: ±.0020 [.051]

**PROPRIETARY NOTE**  
 THIS DOCUMENT CONTAINS INFORMATION CONFIDENTIAL AND PROPRIETARY TO SAMTEC, INC. AND SHALL NOT BE REPRODUCED OR TRANSFERRED TO OTHER DOCUMENTS OR DISCLOSED TO OTHERS OR USED FOR ANY PURPOSE OTHER THAN THAT WHICH IT WAS OBTAINED WITHOUT THE EXPRESSED WRITTEN CONSENT OF SAMTEC, INC.



520 PARK EAST BLVD, NEW ALBANY, IN 47150  
 PHONE: 812-944-6733 FAX: 812-948-5047  
 e-Mail: info@SAMTEC.com code 55322

**MATERIAL:** DO NOT SCALE DRAWING SHEET SCALE: 2.5:1  
 INSULATOR: LCP, UL 94-V0  
 COLOR: BLACK  
 TERMINAL: PHOSPHOR BRONZE  
 F:\DWG\MISC\MKTG\TFC-1XX-XX-XX-D-XX-MKT.SLDDRW

DESCRIPTION:  
 .050 X .050 TERMINAL STRIP  
 DWG. NO.  
 TFC-1XX-XX-XX-D-XX  
 BY: BRATCHER 05/25/2001 SHEET 1 OF 4

DESCRIPTION:  
 .050 X .050 TERMINAL STRIP  
 DWG. NO.  
 TFC-1XX-XX-XX-D-XX  
 BY: BRATCHER 05/25/2001 SHEET 1 OF 4

REVISION AI

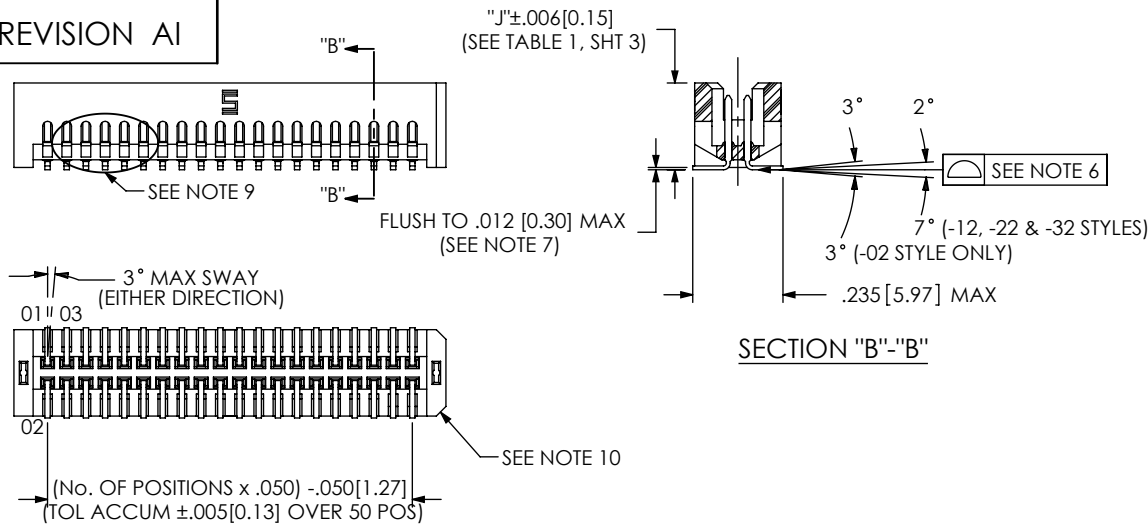


FIG 2  
SURFACE MOUNT  
-02, -12, -22, -32  
DIFFERENT AS SHOWN, OTHERWISE SAME AS FIG 1

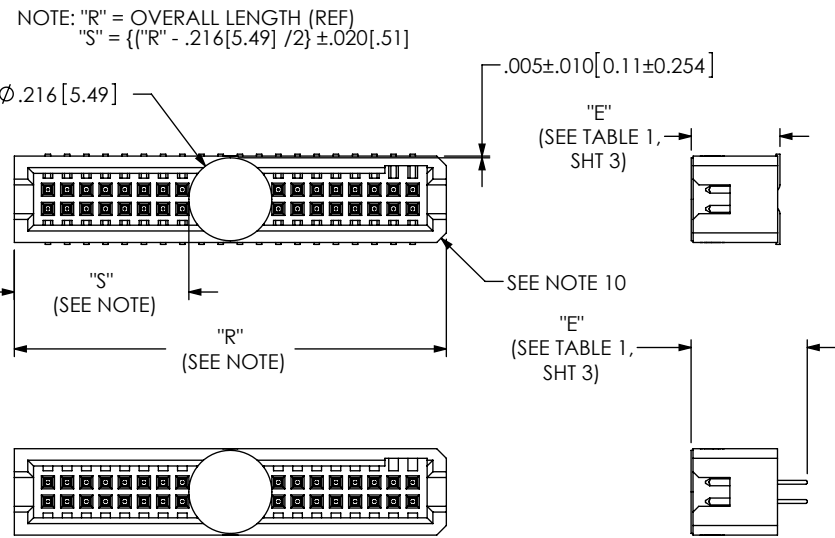


FIG 3  
-K: POLYIMIDE FILM PAD

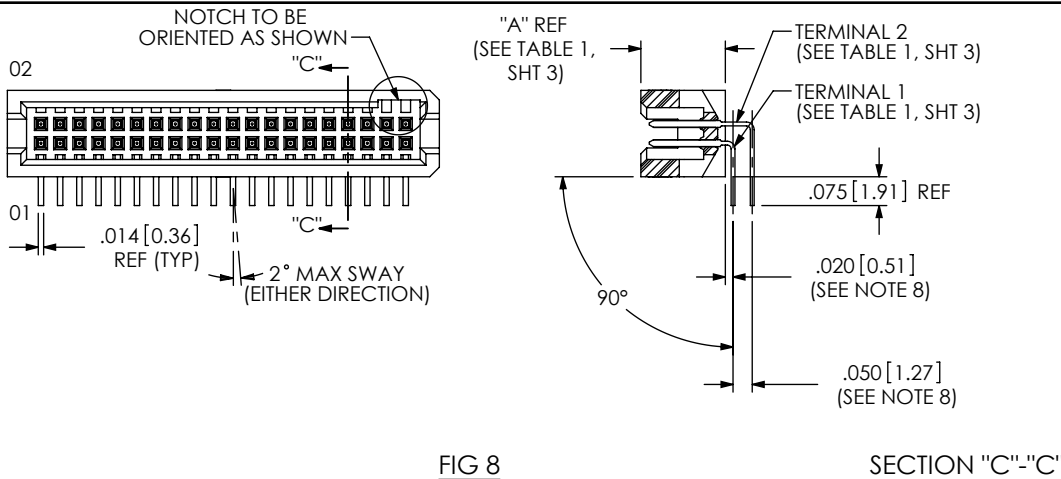
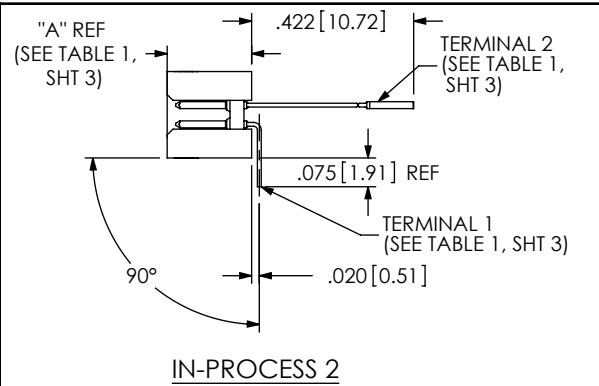
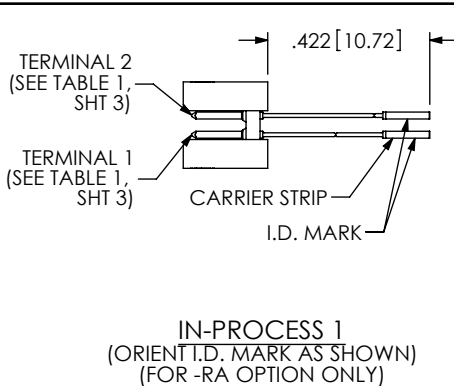


FIG 8  
-RA OPTION  
DIFFERENT AS SHOWN, OTHERWISE SAME AS FIG 1  
SECTION "C"- "C"



PROPRIETARY NOTE  
THIS DOCUMENT CONTAINS INFORMATION  
CONFIDENTIAL AND PROPRIETARY TO  
SAMTEC, INC. AND SHALL NOT BE REPRODUCED  
OR TRANSFERRED TO OTHER DOCUMENTS OR  
DISCLOSED TO OTHERS OR USED FOR ANY  
PURPOSE OTHER THAN THAT WHICH IT WAS  
OBTAINED WITHOUT THE EXPRESSED WRITTEN  
CONSENT OF SAMTEC, INC.

DO NOT SCALE DRAWING

SHEET SCALE: 2:1

F:\DWG\MISC\MKTG\TFC-1XX-XX-XX-D-XX-MKT.SLDDRW

520 PARK EAST BLVD, NEW ALBANY, IN 47150  
PHONE: 812-944-6733 FAX: 812-948-5047  
e-Mail: info@SAMTEC.com code 55322

DESCRIPTION:  
.050 X .050 TERMINAL STRIP

DWG. NO.  
TFC-1XX-XX-XX-D-XX

BY: BRATCHER 05/25/2001 SHEET 2 OF 4

TABLE 1									
LEAD STYLE	BODY	"A"	TERMINAL 1	TERMINAL 2	"C"	"D"	"E"	"F"	"J"
-01	TFM-XX-D-01-XX	.2200 [5.588]	T-1R16-01-XX-2	N/A	.428 [10.87]	.131 [3.33]	.303 [7.70]	.078 [1.98]	N/A
-11	TFM-XX-D-02-XX	.2900 [7.366]	T-1R20-03-XX	N/A	.645 [16.38]	.139 [3.53]	.375 [9.53]	.080 [2.03]	N/A
-21	TFM-XX-D-03-XX	.3600 [9.144]	T-1R20-04-XX	N/A	.645 [16.38]	.139 [3.53]	N/A	.080 [2.03]	N/A
-31	TFM-XX-D-04-XX	.4350 [11.049]	T-1R20-02-XX	N/A	.645 [16.38]	.139 [3.53]	.520 [13.21]	.080 [2.03]	N/A
-02	TFM-XX-D-01-XX	.2200 [5.588]	T-1R16-01-XX-2	N/A	.428 [10.87]	.131 [3.33]	.231 [5.87]	N/A	.226 [5.74]
-12	TFM-XX-D-02-XX	.2900 [7.366]	T-1R20-03-XX	N/A	.645 [16.38]	.139 [3.53]	.301 [7.65]	N/A	.296 [7.52]
-22	TFM-XX-D-03-XX	.3600 [9.144]	T-1R20-04-XX	N/A	.645 [16.38]	.139 [3.53]	.371 [9.42]	N/A	.366 [9.30]
-32	TFM-XX-D-04-XX	.4350 [11.049]	T-1R20-02-XX	N/A	.645 [16.38]	.139 [3.53]	.446 [11.33]	N/A	.441 [11.20]
-01-RA	TFM-XX-D-01-XX	.2200 [5.588]	T-1R16-02-XX	T-1R16-03-XX	N/A	.142 [3.61]	N/A	N/A	N/A

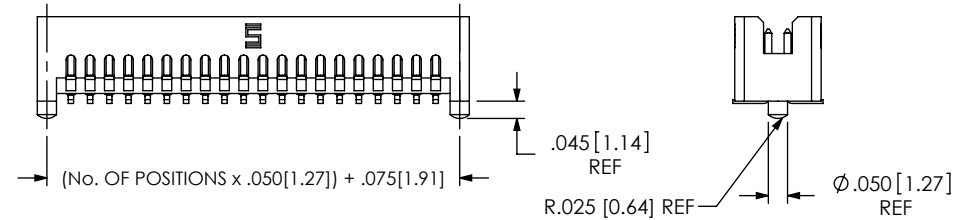
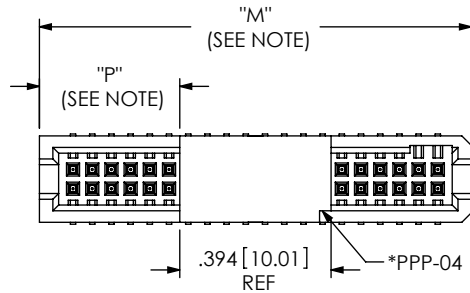
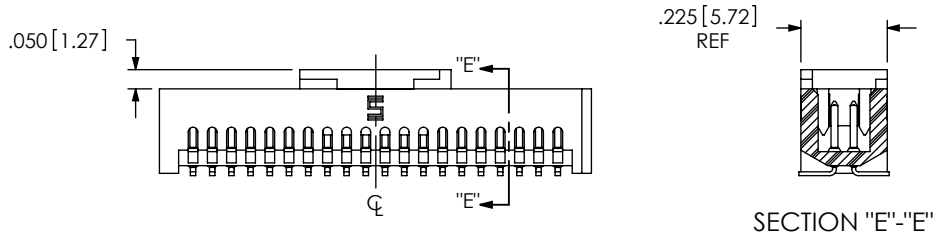


FIG 5  
-A OPTION  
DIFFERENT AS SHOWN, OTHERWISE SAME AS FIG 1



NOTE: "M" = (No. OF POS X .050 [1.27]) + .125 [3.18] (REF)  
 "P" = {"M" - .394 [10.01]} / 2 ± .020 [51]

\* NOTCH ON PAD TO BE ON SAME END AS THE NOTCH IN THE TFM BODY

FIG 7  
-P OPTION  
DIFFERENT AS SHOWN, OTHERWISE SAME AS FIG 1  
(PAD TO BE POSITIONED ON CL AS SHOWN)

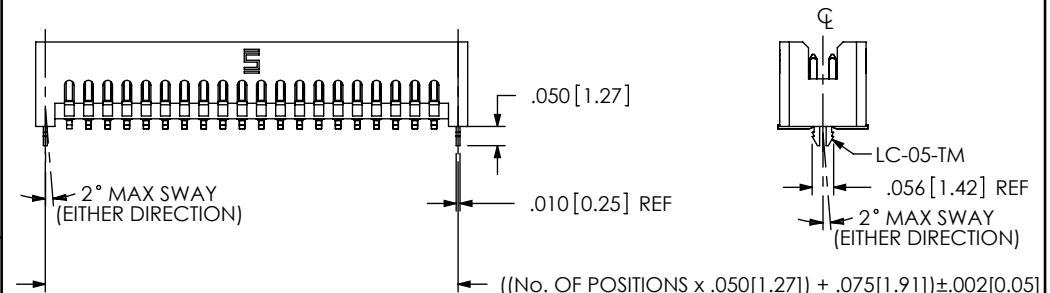



FIG 6  
-LC OPTION  
DIFFERENT AS SHOWN, OTHERWISE SAME AS FIG 1  
(NOT AVAILABLE ON -RA)

F:\DWG\MISC\MKTG\TFC-1XX-XX-XX-D-XX-MKT.SLDRW

<p>PROPRIETARY NOTE</p> <p>THIS DOCUMENT CONTAINS INFORMATION CONFIDENTIAL AND PROPRIETARY TO SAMTEC, INC. AND SHALL NOT BE REPRODUCED OR TRANSFERRED TO OTHER DOCUMENTS OR DISCLOSED TO OTHERS OR USED FOR ANY PURPOSE OTHER THAN THAT WHICH IT WAS OBTAINED WITHOUT THE EXPRESSED WRITTEN CONSENT OF SAMTEC, INC.</p> <p>DO NOT SCALE DRAWING</p> <p>SHEET SCALE: 2:1</p>		
	<p>520 PARK EAST BLVD. NEW ALBANY, IN 47150                  PHONE: 812-944-6733 FAX: 812-948-5047                  e-Mail: info@SAMTEC.com code 55322</p>	
	<p>DESCRIPTION:                  .050 X .050 TERMINAL STRIP</p>	
	<p>DWG. NO.                  TFC-1XX-XX-XX-D-XX</p>	
<p>BY: BRATCHER 05/25/2001</p>		<p>SHEET 3 OF 4</p>

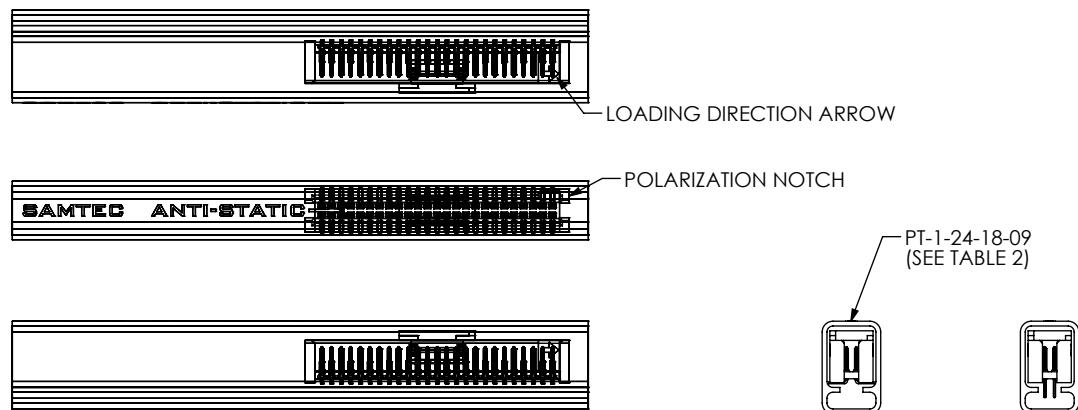


FIG 9  
PT-T-24-XX-09

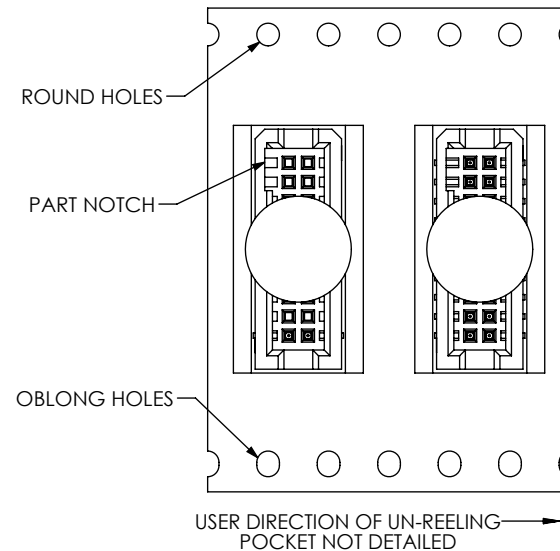


FIG 4  
-TR: TAPE AND REEL

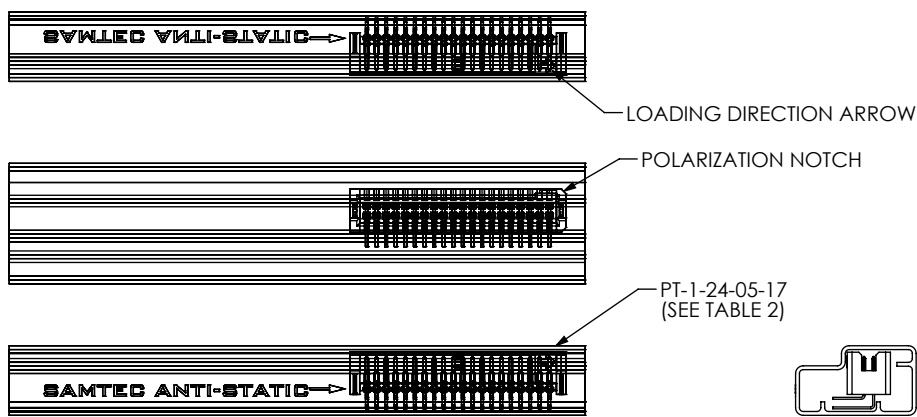


FIG 10  
PT-T-24-05-17

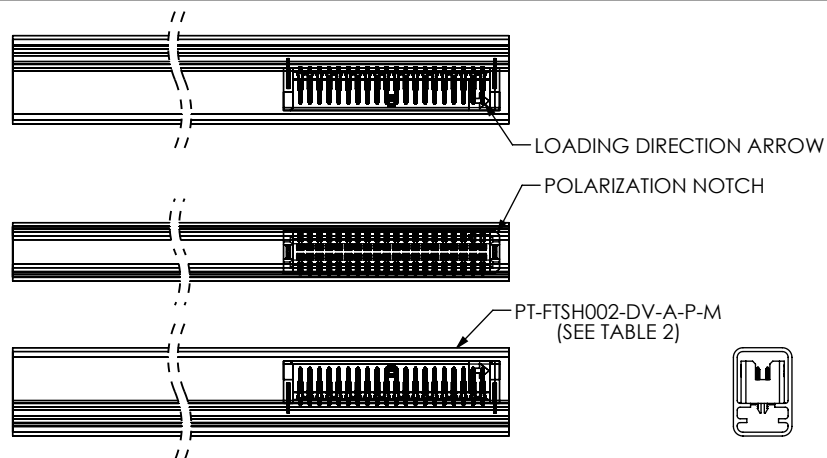



FIG 11  
PT-FTSH002-DV-A-P-M

TABLE 2			
LEAD STYLE	OPTION	TUBE	PLUG
-01	-K, -LC-K, -LC-P, -A-P, -A-K, -P, -WT-P	PT-1-24-18-09	TP-09
	BLANK, -A, -LC, -WT	PT-FTSH002-DV-A-P-M	TP-03
-01-RA	ANY	PT-1-24-5-17	TP-07
-11	BLANK, -A, -A-K, -LC, -LC-K, -K	PT-1-24-18-09	TP-09
	-A-P, -LC-P, -P	PT-1-24-20-09	TP-07
-21	BLANK, -A-P, -LC-P, -P	PT-1-24-05-09	TP-07
	-A, -A-K, -LC, -LC-K, -K	PT-1-24-20-09	TP-07
-31	BLANK, -A, -LC	PT-1-24-05-09	TP-07
	-A-K, -LC-K, -K, -A-P, -LC-P, -P	PT-1-24-02-09	TP-07
-02	BLANK, -A, -A-K, -LC	PT-FTSH002-DV-A-P-M	TP-03
	-LC-K, -K, -A-P, -LC-P, -P	PT-1-24-18-09	TP-09
-12	ANY	PT-1-24-04-09	TP-07
-22	BLANK, -A, -A-K, -LC, -LC-K, -K	PT-1-24-04-09	TP-07
	-A-P, -LC-P, -P	PT-1-24-05-09	TP-07
-32	ANY	PT-1-24-02-09	TP-07

NOTE:  
PARTS TO BE PACKAGED WITH THE LOADING DIRECTION ARROW POINTED IN SAME DIRECTION AS THE ARROW ON TUBE.

F:\DWG\MISC\MKTG\TFC-1XX-XX-XX-D-XX-MKT.SLDDRW

<p>PROPRIETARY NOTE</p> <p>THIS DOCUMENT CONTAINS INFORMATION CONFIDENTIAL AND PROPRIETARY TO SAMTEC, INC. AND SHALL NOT BE REPRODUCED OR TRANSFERRED TO OTHER DOCUMENTS OR DISCLOSED TO OTHERS OR USED FOR ANY PURPOSE OTHER THAN THAT WHICH IT WAS OBTAINED WITHOUT THE EXPRESSED WRITTEN CONSENT OF SAMTEC, INC.</p> <p>DO NOT SCALE DRAWING</p> <p>SHEET SCALE: 2:1</p>		
	<p>520 PARK EAST BLVD. NEW ALBANY, IN 47150 PHONE: 812-944-6733 FAX: 812-948-5047 e-Mail: info@SAMTEC.com code 55322</p>	
	<p>DESCRIPTION: .050 X .050 TERMINAL STRIP</p>	
	<p>DWG. NO. TFC-1XX-XX-XX-D-XX</p>	
	<p>BY: BRATCHER 05/25/2001</p>	<p>SHEET 4 OF 4</p>