

REVISION CH

DO NOT SCALE THIS DRAWING

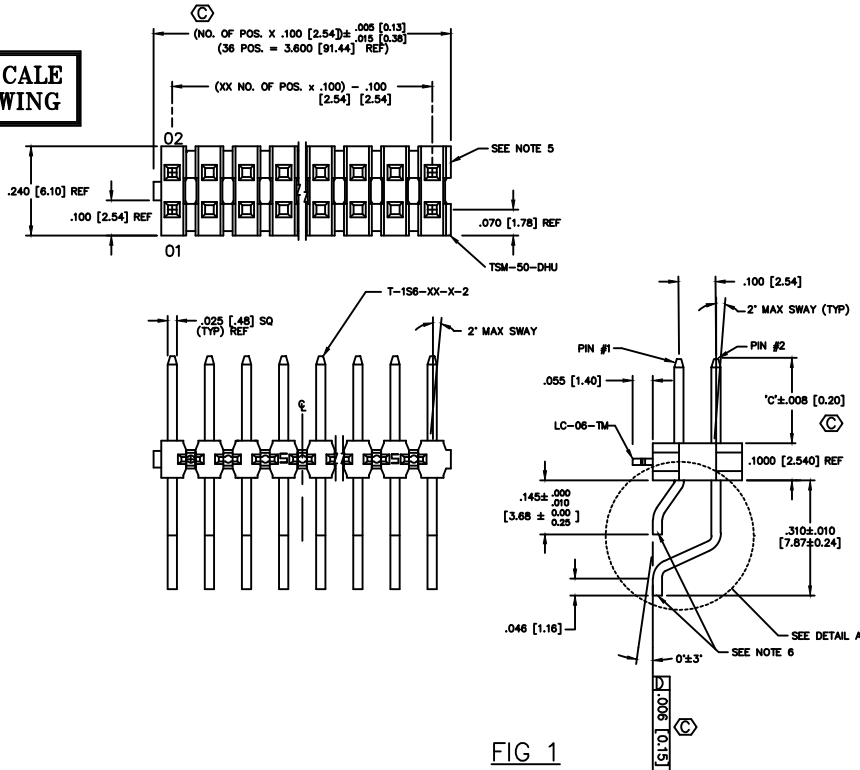


FIG 1
-LC: LOCKING CLIP OPTION
CLIPS N/A WITH -A OPTION.

TABLE 2

NO OF POS	S/S BOW
02 - 10	.0030 [0.080]
11 - 20	.0050 [0.127]
21 - 30	.0070 [0.178]
31 - 36	.0080 [0.203]

ONE PLACE DECIMALS ± .1 [3]	TWO PLACE DECIMALS ± .01 [3]	THREE PLACE DECIMALS ± .005 [0.13]	FOUR PLACE DECIMALS ± .0020 [0.051]	ANGLES ± 2°	TOLERANCES AND ANGLES	TITLE	DWG NO:
						TERMINAL STRIP DOUBLE SURFACE MOUNT	TSM-1XX-XX-XXX-XX-XX-XXX-XX SHEET 1 OF 3

TSM-1XX-XX-XXX-XX-XX-XXX-XX

NO. OF POSITIONS
-02 THRU -36
LEAD STYLE
(SEE TABLE 1)

PLATING SPECIFICATION:

- T: MATTE TIN CONTACT AND TAIL
- S: 30μ" SELECTIVE GOLD IN CONTACT AREA, MATTE TIN ON TAIL
- L: 10μ" SELECTIVE GOLD IN CONTACT AREA, MATTE TIN ON TAIL
- F: 3μ" FLASH SELECTIVE GOLD IN CONTACT AREA, MATTE TIN ON TAIL
- H: 30μ" HEAVY GOLD IN CONTACT AREA, 3μ" FLASH GOLD ON TAIL
- TL: TIN/LEAD (90/10+/-5) CONTACT AND TAIL
- STL: 30μ" SELECTIVE GOLD, ON CONTACT, TIN/LEAD (90/10+/-5) TAIL
- SM: 30μ" SELECTIVE GOLD, IN CONTACT AREA, MATTE TIN ON TAIL
- LM: 10μ" LIGHT SELECTIVE GOLD IN CONTACT AREA, MATTE TIN ON TAIL
- FM: 3μ" FLASH SELECTIVE GOLD, IN CONTACT AREA, MATTE TIN ON TAIL
- TM: MATTE TIN CONTACT AND TAIL
- SS: 30μ" STRIPED SELECTIVE GOLD IN CONTACT, MATTE TIN ON TAIL (SEE NOTE 14)

ROW OPTION

- DH: DOUBLE HORIZONTAL (USE TSM-50-DHU)
- MT: MIXED TECHNOLOGY (SEE FIG. 4 & TABLE 1) (NOT AVAILABLE WITH -LC, -SL, -TR OR -A OPTIONS)

NOTES:

1. Ⓢ REPRESENTS A CRITICAL DIMENSION.
2. DELETED
3. DELETED
4. DELETED
5. .005 [0.13] MAX CUT FLASH.
6. .002 [0.051] MAX BURR. MUST BE AWAY FROM SMT BOARD SIDE.
7. DELETED
8. CUT TO POSITION BODIES TO BE MULTI-CUT OR ROTO-CUT ONLY, NEVER AIR CUT.
9. TUBE POSITIONS 5-36, BULK PACKAGE POSITIONS 2-4.
10. 3 LBS. MIN PUSHOUT FORCE.
11. -04 LEAD STYLE DOES NOT MATE WITH SSM-DH.
12. ORIENTATION OF PART IN TAPE AND REEL TO BE CONTROLLED BY POCKET DESIGN.
13. DUE TO THE HIGH AMOUNT OF INSERTION FORCE NEEDED, THE -LC OPTION IS NOT COMPATIBLE WITH AUTO PLACEMENT. SAMTEC RECOMMENDS MANUAL PLACEMENT FOR ALL ASSEMBLIES WITH THE -LC OPTION.
14. -SS OPTION ONLY AVAILABLE IN LEAD STYLE -01 AND CAN ONLY MATE WITH SSM, SSQ, SSM, ESW, ESQ AND BCS.

- OPTION #3
- P: PICK & PLACE PAD, SEE FIG 3 (USE PPP-08) (AVAILABLE ON POS -05 THRU -36) (AVAILABLE ON POS -02 THRU -04 WITH -TR OPTION ONLY) (NOT AVAILABLE WITH -K OPTION)
- TR: TAPE & REEL (28 POS MAX) (AVAILABLE FOR -DH ONLY)
- K: POLYIMIDE FILM (SEE FIG. 5, SHT. 2) (NOT AVAILABLE WITH -P OPTION) (USE K-500-300) (AVAILABLE ON POS -04 THRU -36) (AVAILABLE ON POS -02 THRU -03 WITH -TR OPTION ONLY)
- OPTION #2
- POLARIZED POSITION: SPECIFY OMITTED PIN
- OPTION #1
- LC: LOCKING CLIP (USE LC-06-TM - SEE FIG. 1) (SEE NOTE 13) (03-36 POS USE 2 PER STRIP, 02 POS USE 1 PER STRIP) (USE TSM-XX-DHU) (NOT AVAILABLE WITH -A OR -SL OPTIONS)
- A: ALIGNMENT PIN (SEE FIG. 2, SHT. 3) (STAKED: 4 POS MIN) (MOLDED: 2 POS MIN) (NOT AVAILABLE WITH -LC OR -SL OPTIONS) (LEAVE BLANK FOR NO HOLD DOWN OPTION)
- SL: SOLDER LOCK (SEE FIG. 6, SHT. 2) (2 POSITION MINIMUM) (NOT AVAILABLE WITH -LC OR -A OPTIONS)

DIFFERENT AS SHOWN, OTHERWISE SAME AS FIG 1.

FOR EVEN: "A" = $\frac{(\text{NO. OF POS. X .100 [2.54]} - .300 [7.62])}{2} + .050 [1.27]$

FOR ODD: "A" = $\frac{(\text{NO. OF POS. X .100 [2.54]} - .300 [7.62])}{2}$

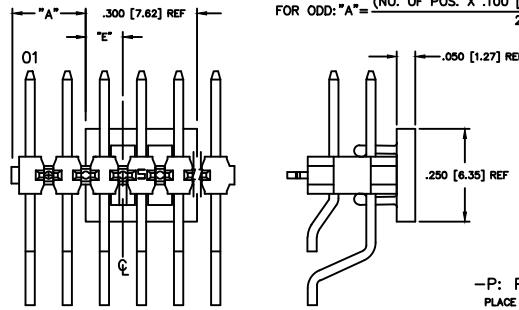


TABLE 3

POS.	"E"
ODD	.150 [3.81]
EVEN	.100 [2.54]

FIG 3
-P: PICK & PLACE PAD
PLACE PPP-08 ON Ⓢ AS SHOWN

TABLE 1

ROW OPTION	LEAD STYLE	BOTTOM ROW PIN #1	TOP ROW PIN #2	"C"
-DH	-01	T-156-09-X-2	T-156-20-X-2	.230 [5.84]
-DH	-02	T-156-09-X-2	T-156-20-X-2	.320 [8.13]
-DH	-03	T-156-09-X-2	T-156-20-X-2	.420 [10.67]
-DH	-04 (SEE NOTE 11)	T-156-09-X-2	T-156-20-X-2	1.20 [3.05]
-MT	-01	T-156-08-X-2	T-156-20-X-2	.230 [5.84]
-MT	-02	T-156-15-X-2	T-156-20-X-2	.320 [8.13]
-MT	-03	T-156-09-X-2	T-156-20-X-2	.420 [10.67]

MATERIAL:
INSULATOR:
LCP, UL 94 VO
COLOR: BLACK
TERMINALS:
PHOSPHOR BRONZE

MISC\MKTG
TSM-1XX-XX-XXX-XX-XX-XXX-XX-MKT1

samtec

520 PARK EAST BLVD. NEW ALBANY, INDIANA 47150
PHONE (812) 944-6733 P.O. BOX 1147
CODE 55322

MADE BY: BRATCHER 7-27-85

TSM-1XX-XX-XXX-XX-XX-XXX-XX
SHEET 1 OF 3

PROPRIETARY NOTE
THIS DOCUMENT CONTAINS INFORMATION OF A PROPRIETARY NATURE. IT IS THE PROPERTY OF SAMTEC AND IS TO BE USED ONLY FOR THE PURPOSES SPECIFIED. IT IS NOT TO BE REPRODUCED, COPIED, OR TRANSMITTED IN ANY FORM OR BY ANY MEANS, ELECTRONIC OR MECHANICAL, INCLUDING PHOTOCOPYING, RECORDING, OR BY ANY INFORMATION STORAGE AND RETRIEVAL SYSTEM, WITHOUT THE WRITTEN PERMISSION OF SAMTEC INC.