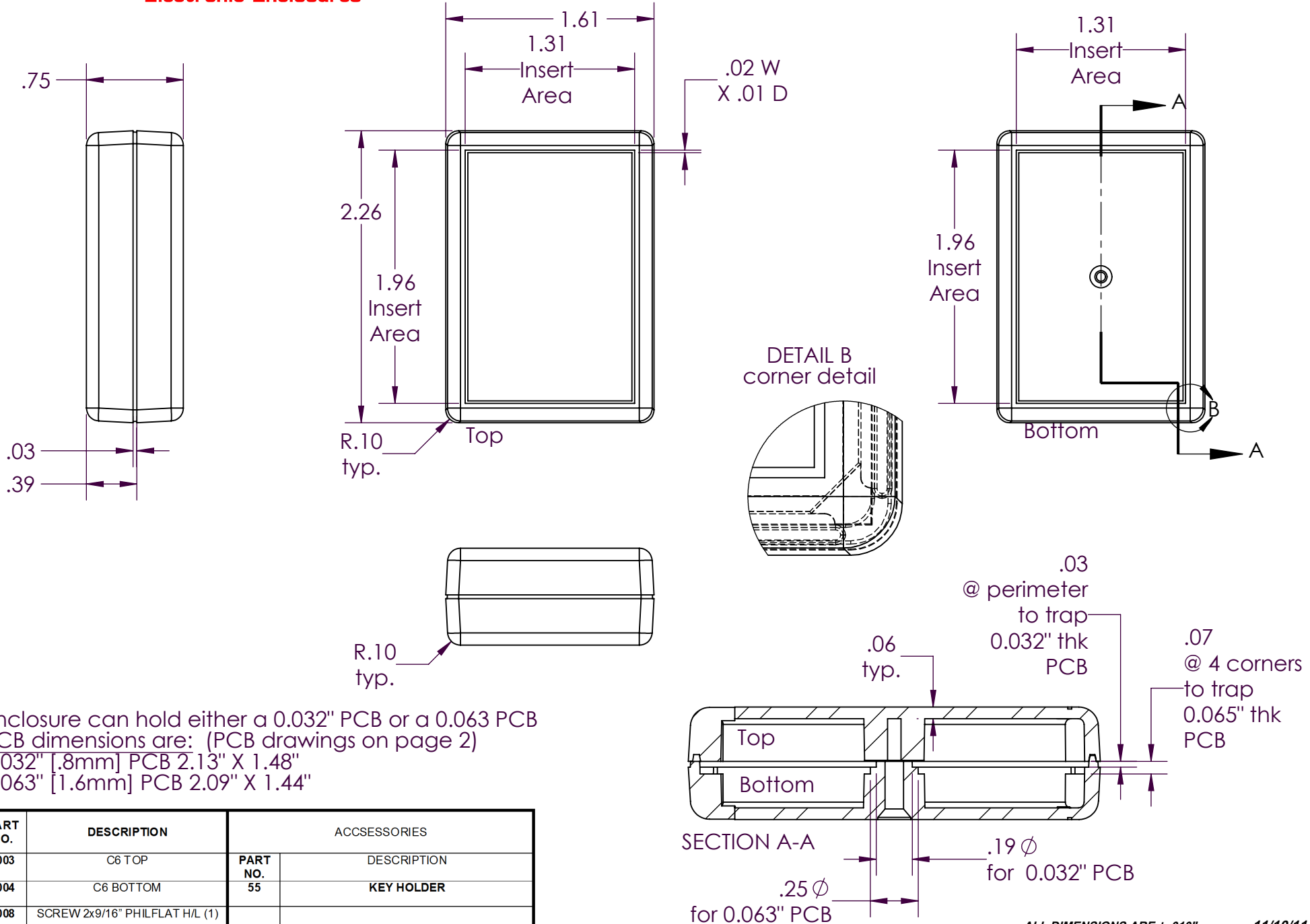


# SERPAC C6

Electronic Enclosures

**NOTES:**  
 1) When machine or I-plates modifications are required, use the center of the enclosure to dimension.

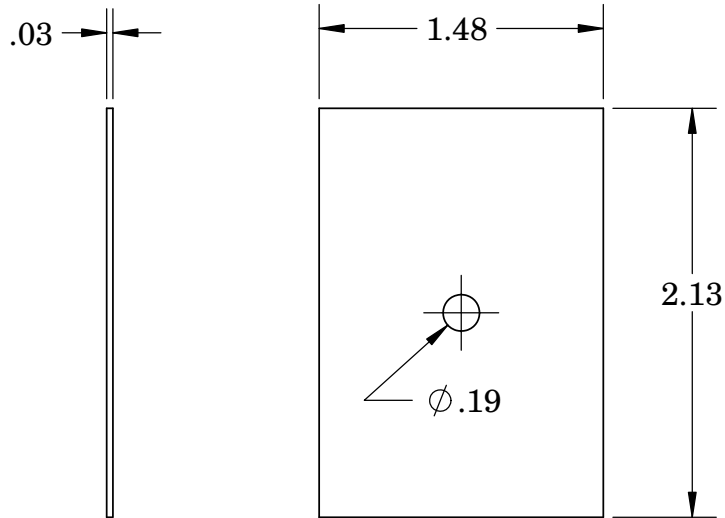


Enclosure can hold either a 0.032" PCB or a 0.063 PCB  
 PCB dimensions are: (PCB drawings on page 2)  
 0.032" [.8mm] PCB 2.13" X 1.48"  
 0.063" [1.6mm] PCB 2.09" X 1.44"

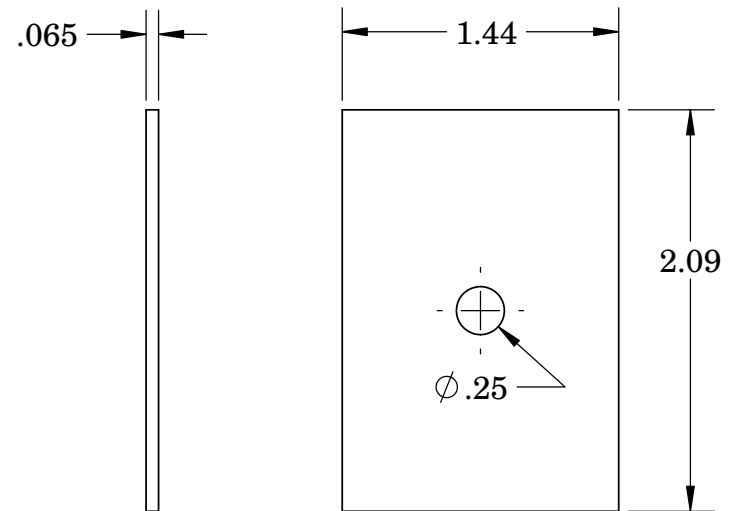
PART NO.	DESCRIPTION	ACCESSORIES	
		PART NO.	DESCRIPTION
1003	C6 TOP	55	KEY HOLDER
1004	C6 BOTTOM		
6008	SCREW 2x9/16" PHILFLAT H/L (1)		

# SERPAC CIRCUIT BOARD C6

Electronic Enclosures



**.032 board**



**.065 board**

**NOTES:**  
These are suggested dimensions.  
Plastic parts have a  $\pm 0.010$ " manufacturing tolerance.