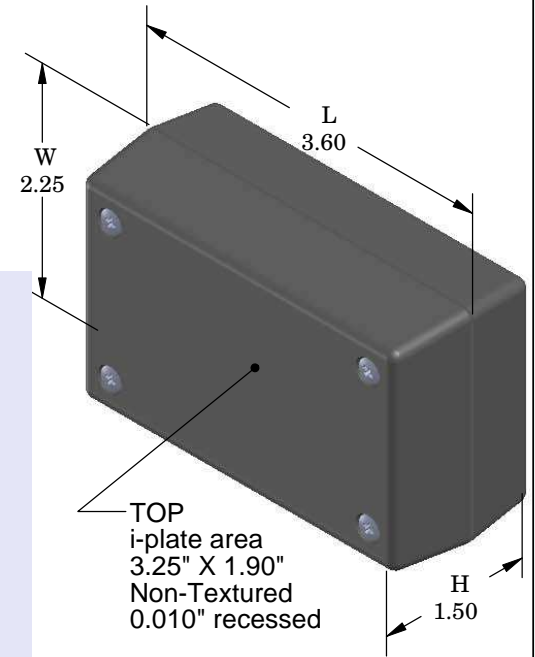
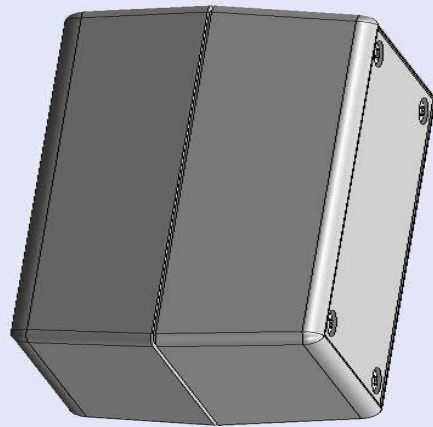


# SERPAC 111Ri (3D exploded)

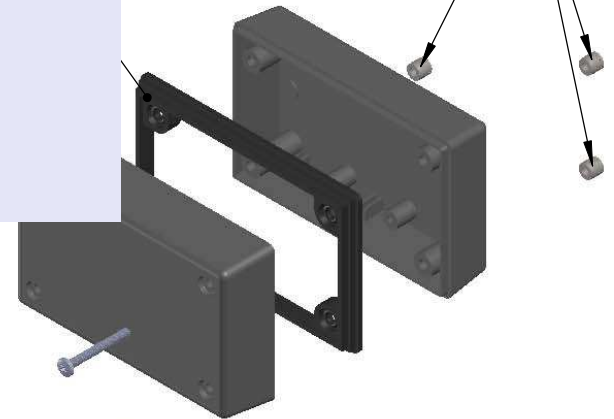
Electronic Enclosures

- Click on image to show toolbar. Use ▶|| to Play/Pause Animation.
- Left click and drag on image to move 3D model.



**Threaded inserts only have to be assembled the first time.**

**Perforating gasket PS11 optional see note #2**



- a) Zoom in & out with center wheel.
- b) Pause at any moment to view and or print views.
- c) Change the views to ortho and section views if needed from the Views pull down menu.
- d) Explore options included in the tool bar like: Views, Transparency of model, Lighting type, etc.

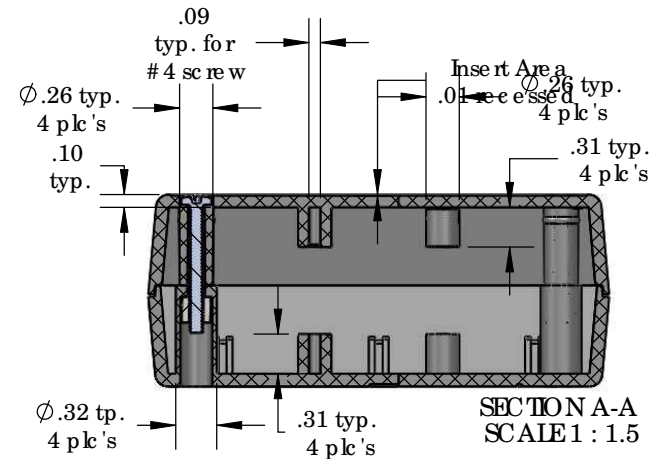
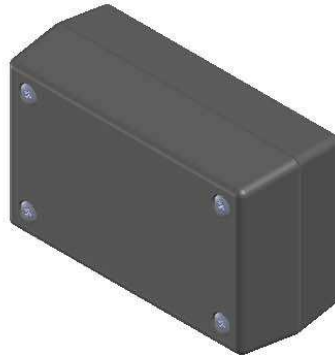
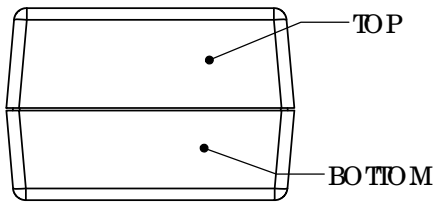
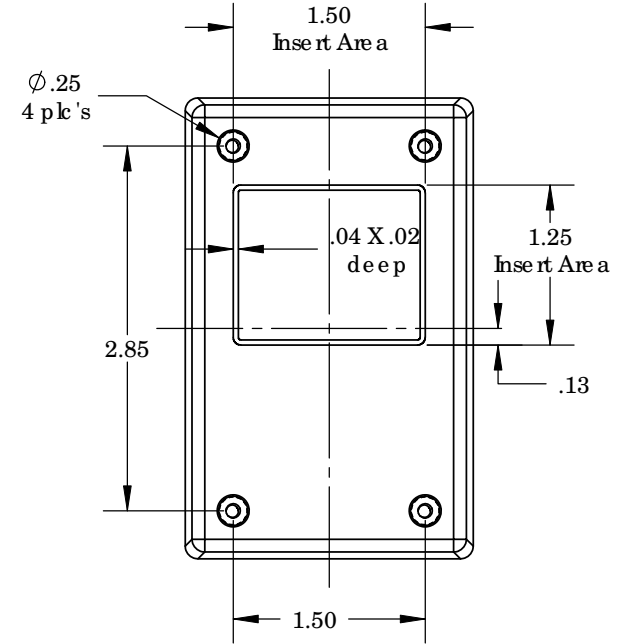
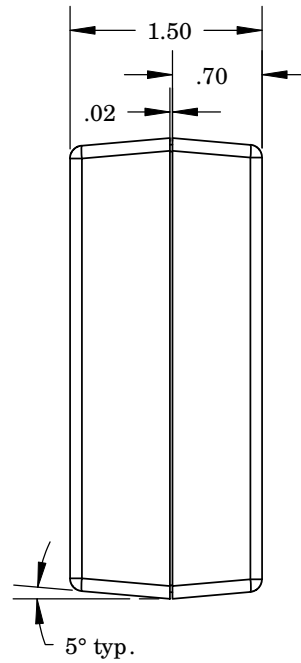
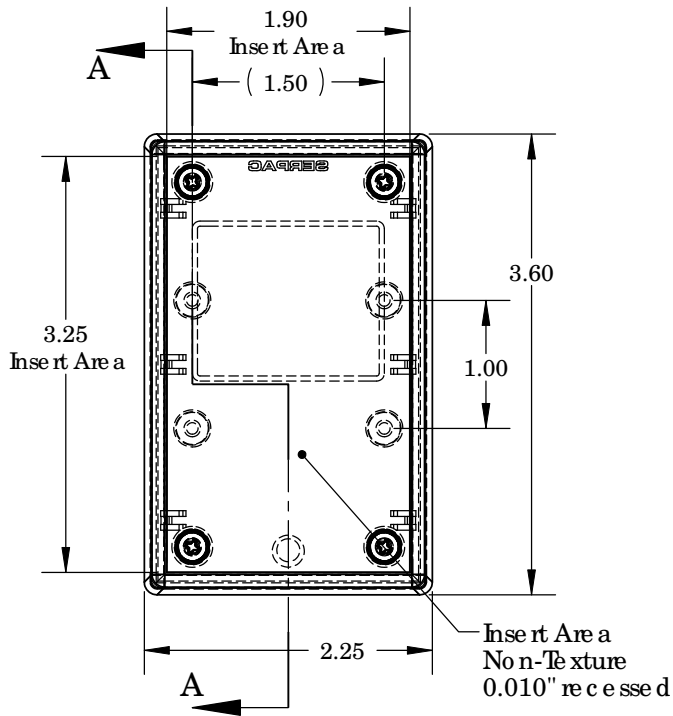
| PART NO. | DESCRIPTION (Included) | ACCESSORIES (Optional) |                      |
|----------|------------------------|------------------------|----------------------|
| 1-1Ri    | TOP                    | PART NO.               | DESCRIPTION          |
| 11       | BOTTOM                 | 50                     | Non-skid Feet        |
| 6017     | 4-40 SCREW (4)         | PS11                   | Perimeter Seal       |
| 6102     | THREADED INSERTS (4)   | 310                    | Prototype grid board |
|          |                        | 410                    | Prototype clad board |

Notes: Enclosure weight .14 lbs/ 65 gm  
 1) Enclosure meets or exceeds IP40 and NEMA 1  
 2) When used with PS11 the enclosure meets or exceeds IP 67 and NEMA 4X, 12 and 13 MIL-SID-810G 506.5  
 3) Circuit Board drawings can be downloaded at:  
<http://www.serpac.com/Accessories/CircuitBoard/drawings/310-410.pdf>  
 4) All components are RoHS Compliant.

**ALL DIMENSIONS ARE ±.010" 7/27/10 (1 of 2)**  
 2009 Wright Ave. La Verne, CA 91750  
 Ph. (626) 331-0517 Ex. (626) 331-8584 [serpac.com](http://serpac.com)

# SERPAC 111Ri (user print)

Electronic Enclosures



| PART NO. | DESCRIPTION (Included) | ACCESSORIES (Optional) |                      |
|----------|------------------------|------------------------|----------------------|
| 1-1Ri    | TOP                    | PART NO.               | DESCRIPTION          |
| 11       | BOTTOM                 | 50                     | Non-skid Feet        |
| 6017     | 4-40 SCREW (4)         | PS11                   | Perimeter Seal       |
| 6102     | THREADED INSERTS (4)   | 310                    | Prototype grid board |
|          |                        | 410                    | Prototype clad board |

- Notes: Enclosure weight .14 lbs / 65 gm
- 1) Enclosure meets or exceeds IP40 and NEMA 1
  - 2) When used with PS11 the enclosure meets or exceeds IP 67 and NEMA 4X, 12 and 13 MIL-STD-810G 506.5
  - 3) Circuit Board drawings can be downloaded at: <http://www.serpac.com/Accessories/CircuitBoard/drawings/310-410.pdf>
  - 4) All components are RoHS Compliant.