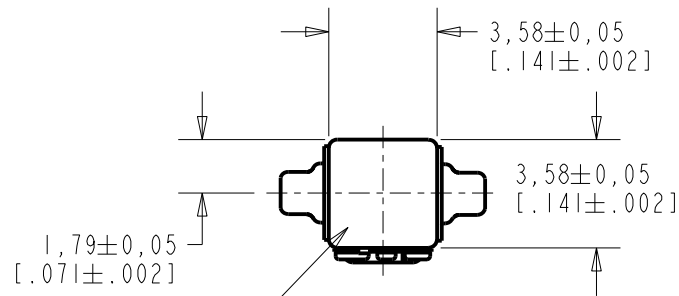
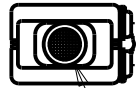
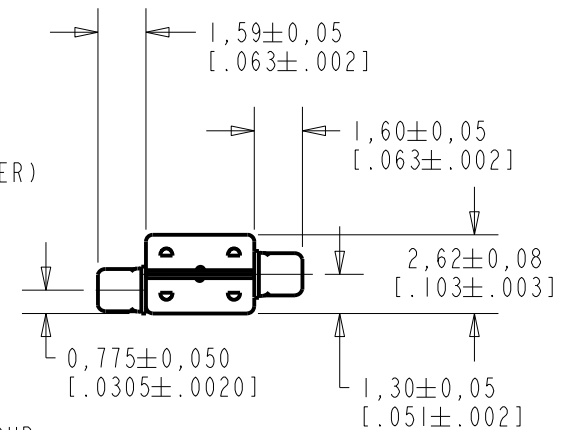
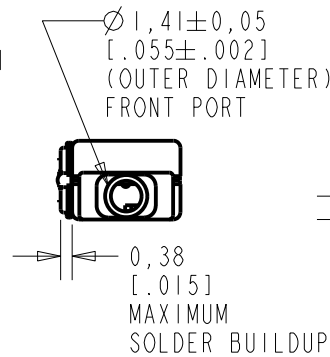
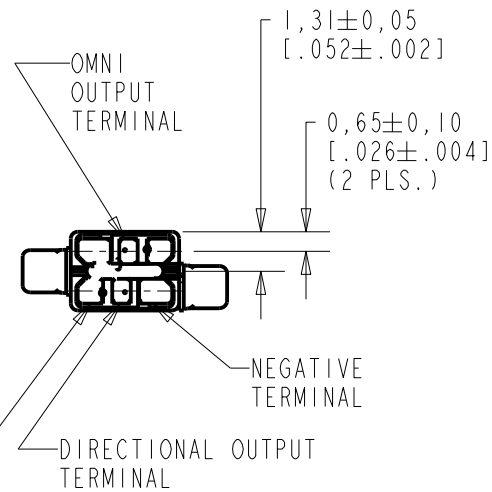


TP-24620-000

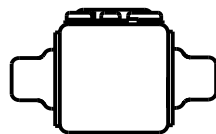
SHT 1.1



LASER MARK ON THIS SURFACE



Ø 1,41±0,05  
[.055±.002]  
(OUTER DIMENSION)  
REAR PORT AND  
FRONT OMNI PORT



NOMINAL WEIGHT  
.126 GRAMS

DIMENSIONS IN MILLIMETERS [INCHES]

Revision	C.O. #	Implementation Date	RELEASE LEVEL	REVISION
B	MI0103591	5-11-10	Active	B
A	MI0100942	1-30-06		

SCALE: 4:1

DO NOT SCALE DRAWING

TITLE: MICROPHONE

TP-24620-000

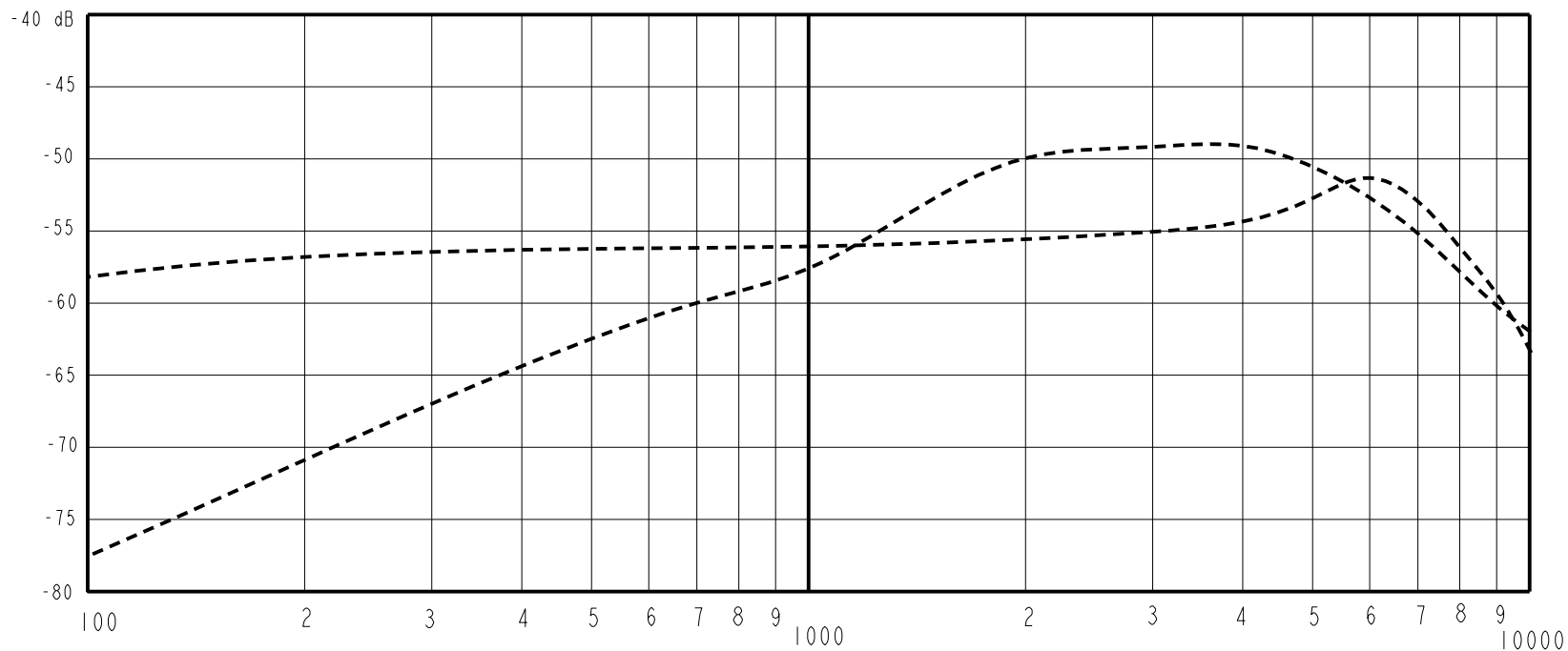
OUTLINE DRAWING

SHT 1.1

DR. BY	DATE
MMM	1-30-06
CK. BY	DATE
GJP	2-1-06
APP. BY	DATE
GJP	2-1-06

**KNOWLES ELECTRONICS**  
ITASCA, ILLINOIS U.S.A.

SENSITIVITY IN dB RELATIVE TO 1.0 VOLT/0.1 Pu (N/M<sup>2</sup>)  
FOR CONDITIONS SHOWN BELOW.



RANGE OF DEVIATION FROM 1 KHz

OMNI	100	---	-58.0	---	-5.0	0.0
DIRECTIONAL	1000	-59.0	-56.0	-53.0	0.0	0.0
	5800	---	-54.0	---	0.0	+5.0

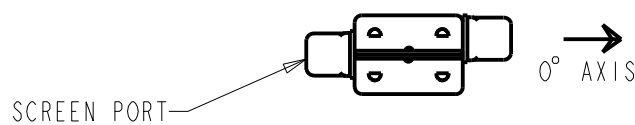
SENSITIVITY AT 1 KHz DIRECTIONAL re OMNIDIRECTIONAL -0.5 dB -2.5 dB

DIRECTIONAL	100	---	-77.5	---	-5.0	0.0
0° ON AXIS	1000	-60.0	-57.0	-54.0	0.0	0.0
	3200	---	-47.0	---	+4.0	+10.0

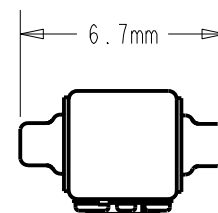
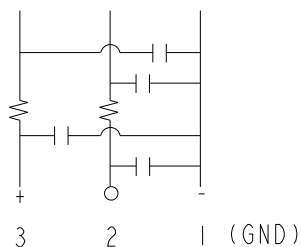
INTERNAL DELAY 7.0uS 9.0uS 10.0uS

- NOTES:
1. CASE CONNECTED TO NEGATIVE TERMINAL.
  2. MICROPHONE TO BE FUNCTIONAL WITH 1.6 VDC SUPPLY.
  3. TYPICAL SENSITIVITY TO HUMIDITY AT 1000Hz IS 0.03 dB/%RH.
  4. SENSITIVITY AND NOISE VALUES INDICATED ON THIS SPECIFICATION ARE VALID AT 50% HUMIDITY.
  5. CAPACITANCE MEASUREMENT MADE WITH BOONTON MODEL 7200 OR EQUIVALENT WITH APPLIED AC VOLTAGE OF 15 mVOLTS AT 1 MHz AND 0 VDC. INCLUDES CIRCUIT CAPACITANCE IN PARALLEL WITH CAPACITOR.
  6. MICROPHONE TESTED WITHOUT TUBE GIVING A PORT SPACING OF 6.7mm (SEE DIAGRAM).

PORT LOCATION	DC SUPPLY	AMPLIFIER CURRENT DRAIN	SENSITIVITY CHANGE ON REDUCING SUPPLY TO 0.9VDC	OMNIDIRECTIONAL "A" WEIGHTED NOISE (1 kHz EQUIV. SPL)	DIRECTIONAL	OUTPUT IMPEDANCE OHMS (EACH HALF)			CAPACITANCE ±50%	
						MIN.	NOM.	MAX.	1-2 HALF	1-3 BOTH
3B, 9S	1.3V	100 µA MAX. FOR PAIR	3 dB MAX.	29.0 MAX.	-96.0 dB MAX. re MAX. re 1V	2800	4400	6800	13pF	13pF



CAPACITANCE PROBE POINTS



SCALE 4:1

Revision	C.O. #	Implementation Date	RELEASE LEVEL	REVISION
B	M10103591	5-11-10	Active	B
A	M10100942	1-30-06		

**KNOWLES ELECTRONICS**  
ITASCA, ILLINOIS U.S.A.

WHEN TEST LIMITS ARE USED TO ESTABLISH INCOMING INSPECTION ACCEPTANCE/REJECTION CRITERIA, CORRELATION OF TEST EQUIPMENT WITH KNOWLES IS ALSO REQUIRED FOR ELIMINATION OF EQUIPMENT AND TEST METHOD VARIATION

TITLE: **MICROPHONE**  
PERFORMANCE SPECIFICATION

**TP-24620-000**  
SHT 2.1

DR. BY	DATE
MMM	1-30-06
CK. BY	DATE
GJP	2-1-06
APP. BY	DATE
GJP	2-1-06