



### Features

- Economical ESD protective product to replace high charging plastic trash cans
- Static dissipative, low charging dissipative surface
- Constructed with double sides, triple ends, and double thickness bottom for greater durability (Items 37810, 37811)
- Steel reinforcing frame provides additional strength and durability
- Conductive plastic handles provide ease of handling along with reliable ESD control path-to-ground
- Identified with ESD Protective Symbol (Ref: ESD 8.1) (Items 37810, 37811)
- Easy assembly without the need for tape, glue, or staples
- ESD protective liners also available
- Impregnated corrugated material; greater durability than coated or printed material
- Static dissipative surface of 10E6 - 10E8 ohms\*
- Buried shielding layer minimizes sloughing and rub-off contamination
- Made from 100% recycled material, and is 100% recyclable

### SPECIFICATIONS

#### Properties

**Electrostatic Decay**  
**Surface Resistance**

**Surface Resistance, Low R.H. Cut-off**

**High-Voltage Discharge Resistance**

**Static Shielding**

**Charged Device Model (CDM) Safety**

**Current-Carrying Hazard**

**Corrosivity**

**Antistat Transfer**

**Water & Isopropyl Alcohol Extraction Tests for Antistat Permanence**

**Sloughing Test**

**Recyclability**

**Biodegradability**

**Volume Conductivity**

**Shelf Life**

#### Typical Values

0.01 seconds at 72°F and 11.8% R.H.  
 10E6 - 10E8 ohms/sq. after 11 days at 68°F and 12% R.H. for surface. 10E3 - 10E4 ohms/sq. for buried shielding layer  
 4% R.H.  
 Failure rate 0/5 (no oxide damage in five consecutive tests)  
 99.9% attenuation at 10kV; 99.6% attenuation at 30kV  
 RTT 10EG-10SP ohms  
 10E3 mA at 110V; 10E3 mA at 220V  
 Contains 1-3 ppm reducible sulfur  
 No transfer  
 Surface resistance 10E8 - 10E9 ohms/square at 74°F and 36% R.H.  
 Negligible surface damage at 10 cycles and <5% of surface damage at 200 cycles in Taber Abrasion Test.  
 No conductive particles abraded from surface  
 Complete recyclability of package  
 Biodegradation in or on moist soil  
 Conductivity from wall to wall as well as across surface to assure permanence of the antistatic property  
 Indefinite

#### Test Procedures/Method

FED-STD-101, Method 4046  
  
 ASTM D257  
 Rockwell International Test Report of December 20, 1991  
 Rockwell International Test Report of December 20, 1991  
 EIA 541, appendix E, capacitive probe test  
 Rockwell International Test Report of December 20, 1991  
 ESD from A to Z  
 FED-STD-101, Method 3005 for reducible sulfur  
 Rockwell International Test Report of January 8, 1992  
 Rockwell International Test Report of January 8, 1992  
  
 ASTM D4060 at 70 rpm with CS-17 abrasive-coated wheels and 1000 grams load  
 Rockwell International Test Report of January 8, 1992  
 Rockwell International Test Report of January 8, 1992  
  
 Rockwell International Test Report of January 8, 1992



Made in America

### Protektive Pak® ESD Trash Receptacle

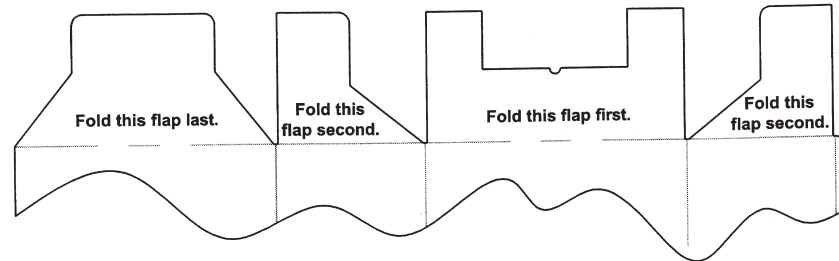


PROTEKTIVE PAK  
 13520 MONTE VISTA AVENUE, CHINO, CA 91710  
 PHONE (909) 627-2578, FAX (909) 363-7331  
 ProtektivePak.com

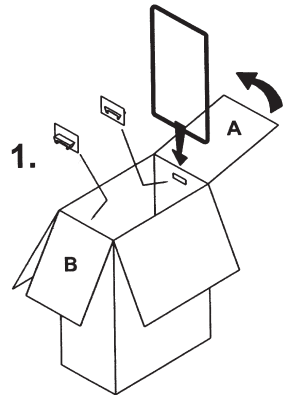
**DRAWING NUMBER**  
 37810

**DATE:**  
 March  
 2009

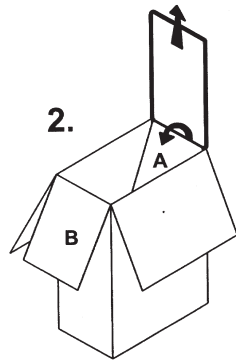
## Bottom Folding Instructions For Part Numbers 37812 & 37813



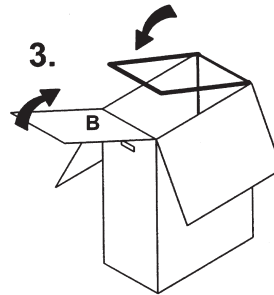
## Wire Assembly Instructions



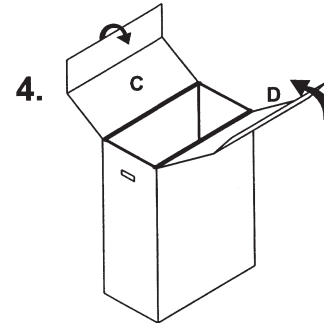
1. Insert handles before folding up box. Place shorter dimension of wire on crease where flap A & box meet.



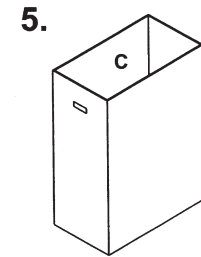
2. Insert flap A into wire. Fold flap A over short dimension of wire & completely into box while pulling the wire up. Make sure wire is within corner notches of flap.



3. Bring down the wire to the other side of the box and fold over flap B. Check to make sure that the wire is at the top of the box tucked under the flaps.



4. Fold flaps C & D at their middle creases and then fold them down into the box.



5. Make sure all flaps interlock with each other.

| Item  | Description (L x W x D)   |
|-------|---|
| 37810 | Trash Receptacle 13-1/2 x 12 x 13-1/4, 9 gal., with wire frame and handles  |
| 37811 | Trash Receptacle 13-1/2 x 12 x 13-1/4, 9 gal., receptacle only              |
| 37812 | Trash Receptacle 22-7/8 x 12-7/8 x 32, 40 gal., with wire frame and handles |
| 37813 | Trash Receptacle 22-7/8 x 12-7/8 x 32, 40 gal., receptacle only             |
| 37820 | Trash Liner/ 10 gal. 26 x 24, 1.5 mil thickness                             |
| 37821 | Trash Liner/ 55 gal. 22 x 16 x 58, 1.5 mil thickness                        |

"It should be understood that any object, item, material or person could be a source of static electricity in the work environment. Removal of unnecessary nonconductors, replacing nonconductive materials with dissipative or conductive materials and grounding all conductors are the principle methods of controlling static electricity in the workplace, regardless of the activity." (ESD Handbook TR 20.20 section 2.4)