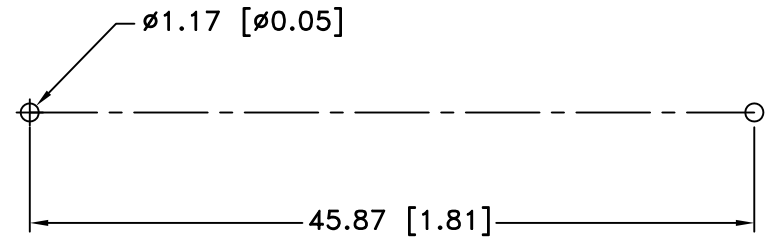
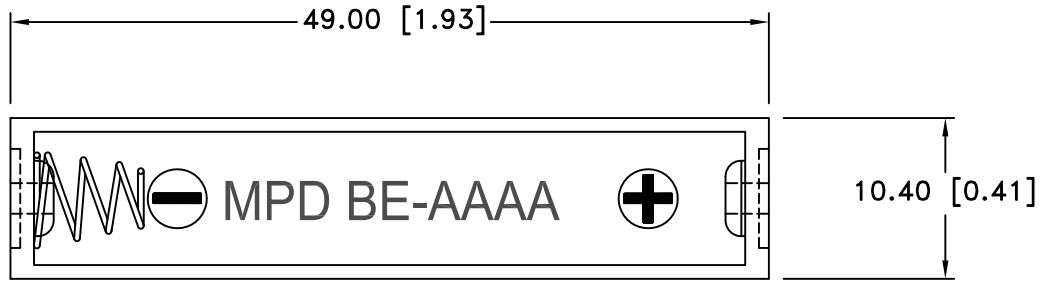
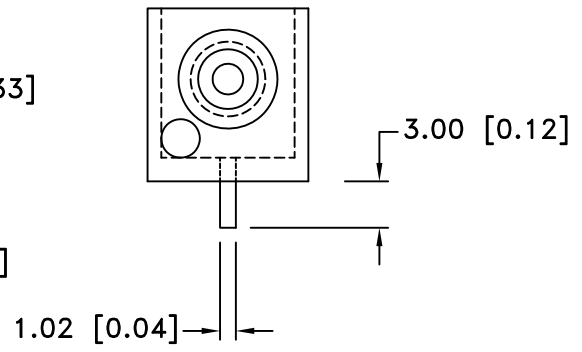


Date	SYM	REVISION RECORD	AUTH	DR.	CK.




PCB LAYOUT



NOTES:

- MATERIAL:
 HOUSING : BLACK ABS
 PC PINS: 0.4MM SUS 301T, 0.4MM NICKEL PLATED
 RIVETS: PHOS. BRONZE, NICKLE PLTD.
 SPRING: SPRING STEEL, NICKLE PLTD.
 ROHS COMPLIANT

Tolerance (Except as noted)	 Memory Protection Devices, Inc 200 Broad Hollow Road, Farmingdale, New York 11735		
decimal $\pm .5$ (.020)	Scale	Drawn By B.S.	
Fractional $\pm .8$ (.030)	Title ONE "AAAA" CELL HOLDER		
Angular $\pm 3^\circ$	Date 04/1/11	Drawing Number BEAAAAPC	