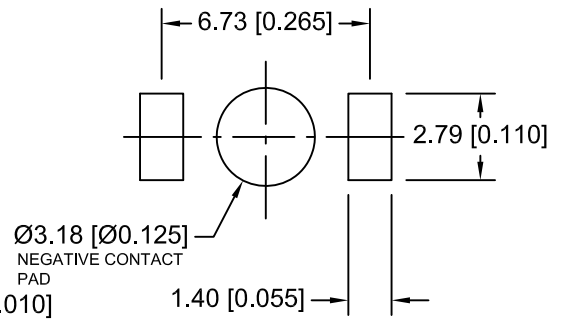
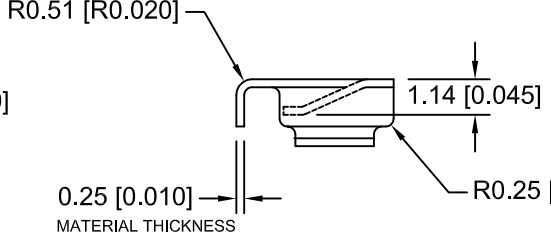
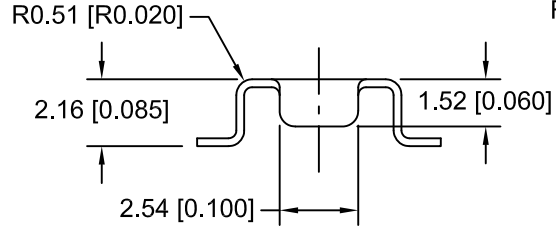
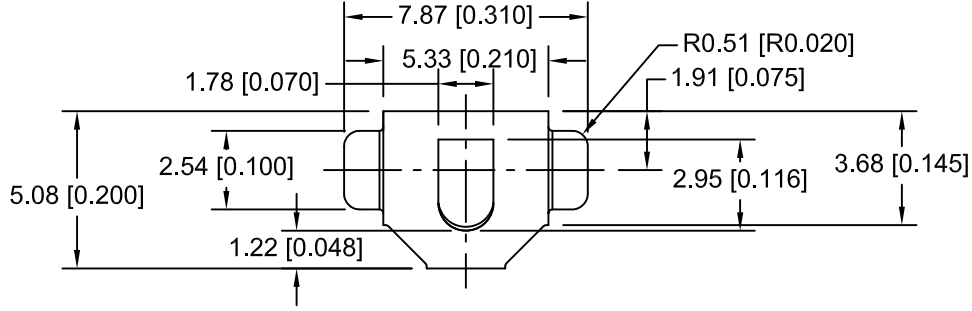


Date	SYM	REVISION RECORD	AUTH	DR.	CK.
5/22/09	A	ADDED TEST RESULTS	T.B.	B.S.	
09/09/11	B	ADDED PCB LAYOUT	T.B.	B.S.	
09/30/11	C	ADDED NEG. CONT. PAD	T.B.	B.S.	
03/07/14	D	UPDATED TO ROHS 2 COMPLIANT	T.B.	B.S.	




PCB LAYOUT

NOTES:

- 1. MATERIAL:  
0.25mm PHOSPHOR BRONZE 1/2H, NICKEL PLATED 40U"-120U"
- TEMPERATURE RANGE: -40°C TO +270°C
- \* VIBRATION TEST: 10-50-10 HZ SWEEPED IN 60 SECONDS  
X,Y,Z DIRECTION: 1 HOUR EACH DIRECTION
- \* RESULT: NO DISLODGEEMENT OF THE CELL OR DAMAGE  
NO DISCONTINUITY OVER 10 MICRO-SECONDS
- \* SHOCK TEST: HALF SINE WAVE ACCELERATION 150G, 6 MILLI-SECONDS  
3 SHOCK PULSES EACH DIRECTION PER AXIS, TOTAL OF 18 PULSES
- \* RESULT: NO EVIDENCE OF PHYSICAL DAMAGE
- \* DROP TEST: DROPPED FROM 1M HIGH TO CONCRETE FLOOR
- \* RESULT: NO EVIDENCE OF PHYSICAL DAMAGE

ROHS 2 COMPLIANT

Tolerance (Except as noted)	 <b>Memory Protection Devices, Inc</b> 200 Broad Hollow Road, Farmingdale, New York 11735	Scale	Drawn By B.S.
			Approved By T.B.
decimal ±.5 (.020)	Title ML414 BATTERY CONTACT		
Fractional ± .8 (.030)		Date 03/07/14	Drawing Number BK-414
Angular ± 3°			

CELL SIZE	RETAINS BATTERY NUMBERS
4.8mm	ML414, MS412FE, MS414GE