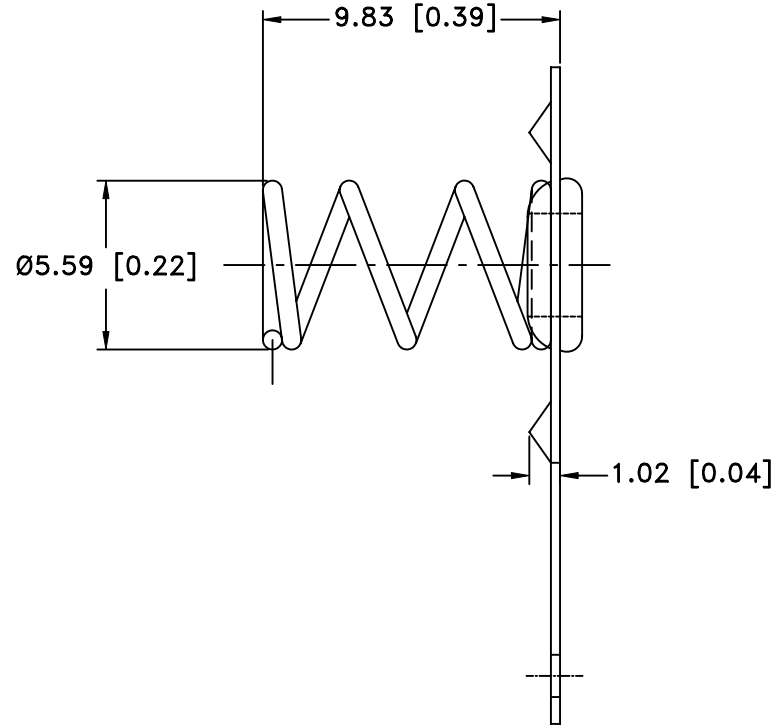
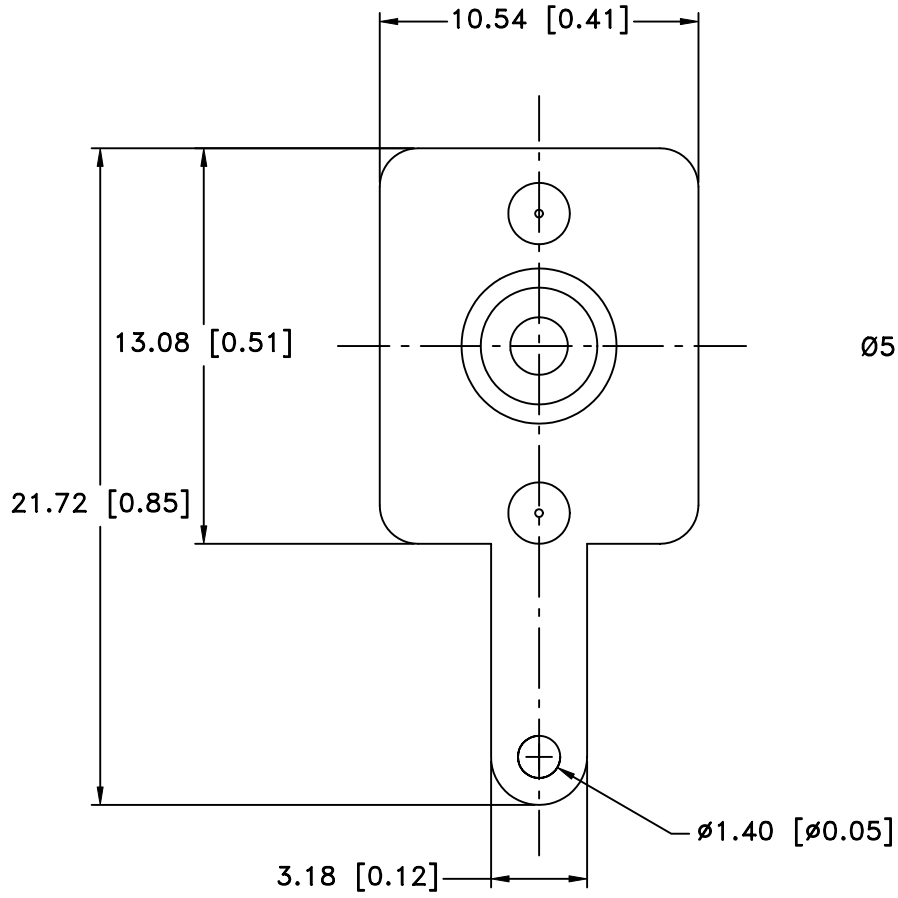



Date	SYM	REVISION RECORD	AUTH	DR.	CK.
01/31/04	A	BASE MATERIAL WAS BRASS	T.B.	B.S.	
01/31/04	B	BASE MATERIAL WAS STEEL	T.B.	B.S.	



**NOTES:**

1. BASE: BRASS, 0.3mm (0.012") THICK. NICKLE PLTD.
2. SPRING: STEEL, 0.61mm (0.024") THICK. NICKLE PLTD.

Tolerance (Except as noted)	 <b>Memory Protection Devices, Inc</b> 200 Broad Hollow Road, Farmingdale, New York 11735	
decimal $\pm .5 (.020)$	Scale	Drawn By B.S. Approved By T.B.
Fractional $\pm .8 (.030)$	Title "AA" BATTERY NEGATIVE CONTACT	
Angular $\pm 3^\circ$	Date 01/31/04	Drawing Number SN-T5-1