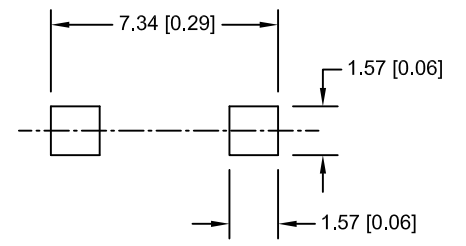
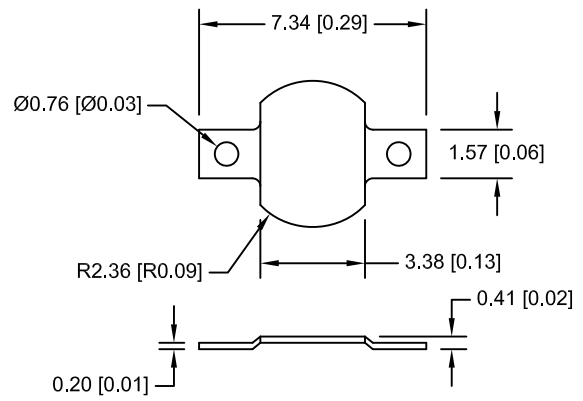



Date	SYM	REVISION RECORD	AUTH	DR.	CK.



PCB LAYOUT

NOTES:

1. MATERIAL:
0.20mm BRASS, NICKLE PLATED
2. ROHS COMPLIANT

Tolerance (Except as noted)	 Memory Protection Devices, Inc 200 Broad Hollow Road, Farmingdale, New York 11735	Scale	Drawn By B.S.
			Approved By T.B.
Fractional $\pm .8$ (.030)	Title COIN CELL SM NEGATIVE CONTACT		
Angular $\pm 3^\circ$	Date 12/02/11	Drawing Number BK-2982	