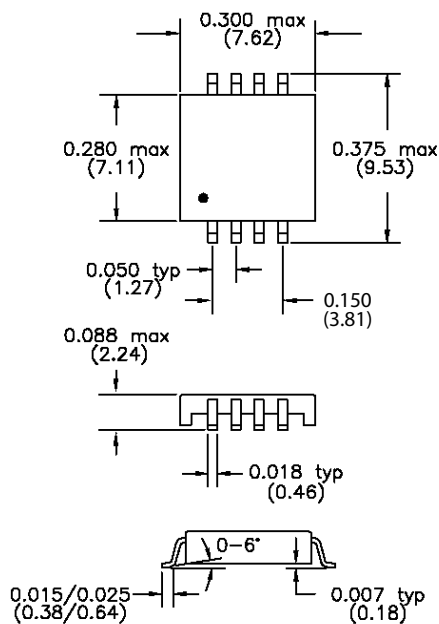


The TGM-P3 series of 8 pin transformers provide the isolation and voltage outputs required for small, low cost DC/DC converter circuits. UL1950, IEC950 and EN60950 recognized. Designed specifically for use with the Maxim™ MAX845 monolithic oscillator/power driver with 3.3V or 5V power source. DIL and SMD packages are also available with isolation voltages up to 4.5KVrms. For more information, pertaining to the MAX845 please contact Maxim at (408) 737-7600. Maxim is a registered trademark of Maxim Integrated Products.

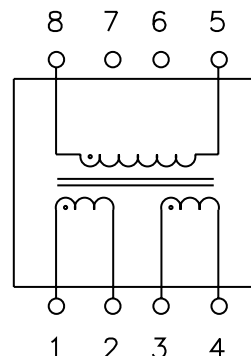


P3 Package

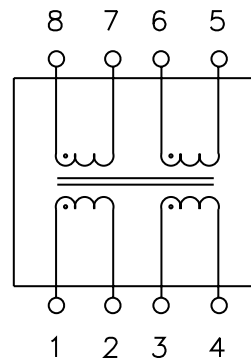


DIMENSIONS : Inch(mm)
 CO-PLANARITY : 0.004(0.10)

Circuit Diagram A



Circuit Diagram B



Electrical Specifications @ 25°C

Operating Temp: -40 to +85°C
 Pri Pins: 1-2 & 3-4
 Pri DCR: 0.6Ω max
 Pri OCL: 240μH typ
 ET Constant: 5.5V-μs min

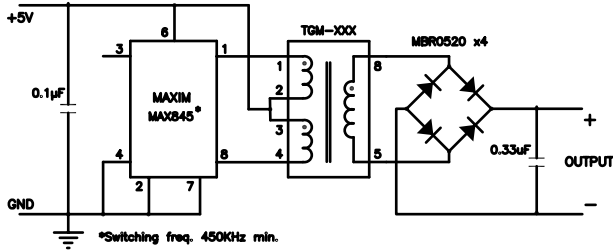
Patented Construction

US Pat Nbrs: 5,656,985 6,297,721 B1
 6,297,720 B1 6,320,489 B1
 6,344,785 B1 6,662,431 B1

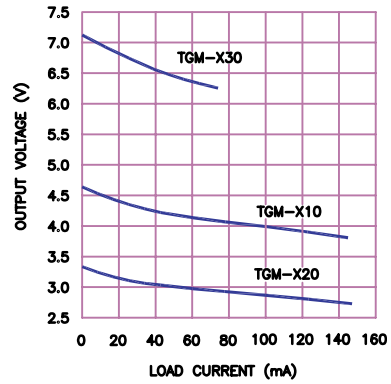
Part Number	Circuit	Turns Ratio (±3%) PRI:SEC	Cw/w pf max.	Pri LL μH typ.	Isolation Vrms
TGM-010P3RL	A	1:1:1	10	0.20	500
TGM-020P3RL	A	4:4:3	10	0.20	500
TGM-030P3RL	A	2:2:3	12	0.40	500
TGM-040P3RL	B	1:1:1.3:1.3	12	0.40	500
TGM-210P3RL	A	1:1:1	10	0.20	1,500

The TGM series of transformers have been designed specifically for use with the Maxim™ MAX253 and MAX845 monolithic oscillator/power driver with 3.3V or 5V power source. Multiple output voltages can be achieved depending on the diode circuit and transformer selected. For more information, pertaining to the MAX253/MAX845 please contact Maxim at (408) 737-7600. Maxim is a registered trademark of Maxim Integrated Products.

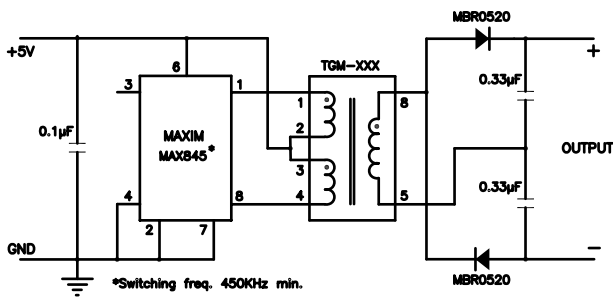
Bridge Rectifier Circuit



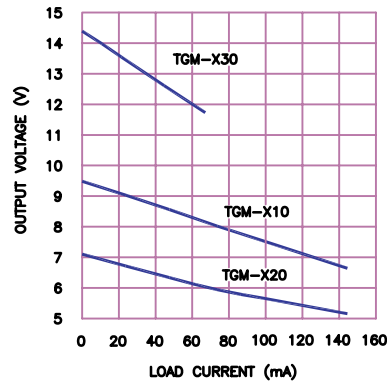
Output Voltages



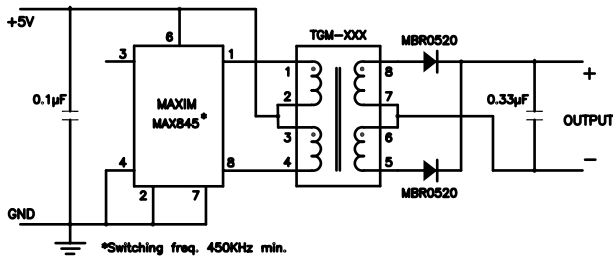
Doubler Circuit



Output Voltages



Full Wave Rectifier Circuit



Output Voltages

