

Sub-Miniature Toggle Switches for Printed Circuit Boards — Wave Solderable Series T8000 PCB Toggle Switches
SPECIFICATIONS

- Mechanical life – 500,000 operations minimum
- Contact resistance – 25 milliohms maximum
- Dielectric strength – 1000 VAC rms
- Ambient temperature range – -20°C to +70°C
- Weight – 0.06 ounces (1.7 grams)
- Electrical life – 100,000 operations minimum
- Red nylon lever supplied as standard. Various colors are available. For information consult Electroswitch
- Contact material – Gold over nickel over silver over copper


CURRENT RATINGS

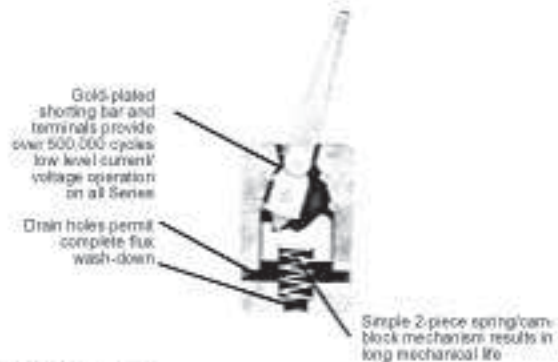
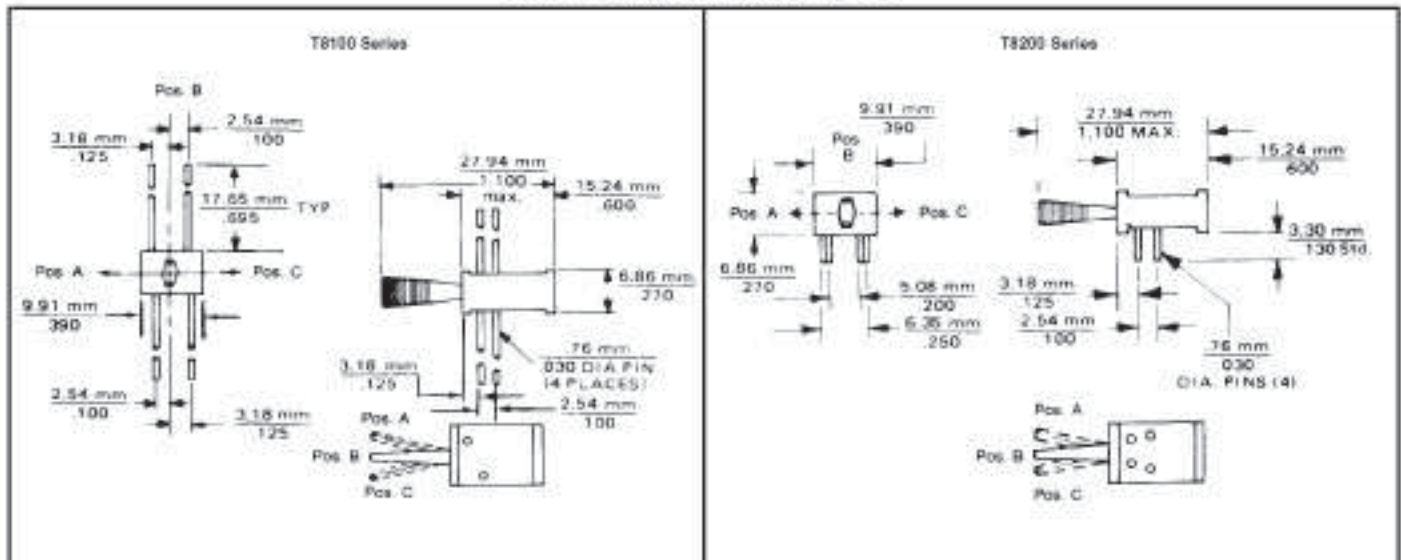
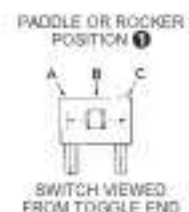
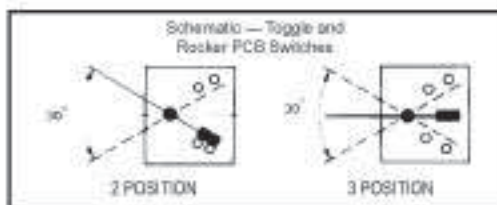
Type	Load	Nominal Rating, Amperes			
		6V dc	12V dc	28V dc	125V ac
T8101, T8201-T8207	Resistive	1	1	0.5	0.5

NOTE: For special .5 VA max. rating @ 28 VAC or DC contact Electroswitch.

SELECTION TABLE (Bold Face Type indicates items normally in Distributor Stock)

Circuit With Lever In ①			Poles & Throw	No. Of Positions	Catalog Number By Terminal Length	
Position A	Position B	Position C			Dis-continued	0.130" (3.30 mm)
ON	NONE	ON	2-Circ.	2		T8201
ON	NONE	ON*		2	T8202	
ON*	NONE	ON		3	T8203	
ON	OFF	ON*		3	T8204	
ON*	OFF	ON		3	T8205	
ON	OFF	ON		3	T8206	
ON*	OFF	ON*	3	3	T8207	

* Momentary Contact


APPROXIMATE DIMENSIONS

OPTIONS ②


② For information on optional features consult Electroswitch.

CAUTION — MANUAL SWITCHES ARE AFFECTED BY HEAT, CLEANING SOLVENTS AND FLUX. EXTREME CARE SHOULD BE EXERCISED DURING HAND SOLDERING AND WAVE SOLDERING TO PREVENT SWITCH CONTAMINATION.