



Website: [www.displaytech-us.com](http://www.displaytech-us.com)

# Embedded Demonstration Board Product Datasheet

## EMB035INTDEMO

3.5" Integrated TFT Demonstration Board

# Table of Contents

- 1. INTRODUCTION ..... 3
- 2. INT MODULE AUTO-INITIALIZATION ..... 3
- 3. EXAMPLE SOFTWARE ..... 3
- 4. MECHANICAL DRAWING ..... 4
- 5. SCHEMATIC..... 5
- 6. BILL OF MATERIALS ..... 7
- 7. COMPONENT DATASHEETS ..... 9

## 1. Introduction

The Displaytech EMB035INTDEMO is a demonstration board for the Displaytech INT035TFT integrated driver board. The EMB035INTDEMO is controlled by a Microchip PIC32MX460F512L MCU and includes a USB connection, 2Mbyte SPI flash, and an SD card slot.

The INT035TFT integrated display module powers and controls a Displaytech DT035TFT TFT display with a 240 x 320 RGB resolution. The TFT module is mounted on a PCB on which is mounted a Solomon SSD1963 controller with integrated touch screen control and LED backlight power circuitry. Please see the [INT035TFT Datasheet](#) for more information.

The EMB035INTDEMO is powered via a 5v USB connection, with a power switch (SW2) to turn the device on and off. All power levels required by the INT035TFT are generated and regulated by on-board voltage

regulators (see the [schematic](#) for more information).

## 2. INT Module Auto-Initialization

The SSD1963 as well as the Novatek NT39016D COG TFT Controller/Driver on-board the TFT module are automatically initialized upon power-up of the integrated module by an on-board ATmega8 microcontroller.

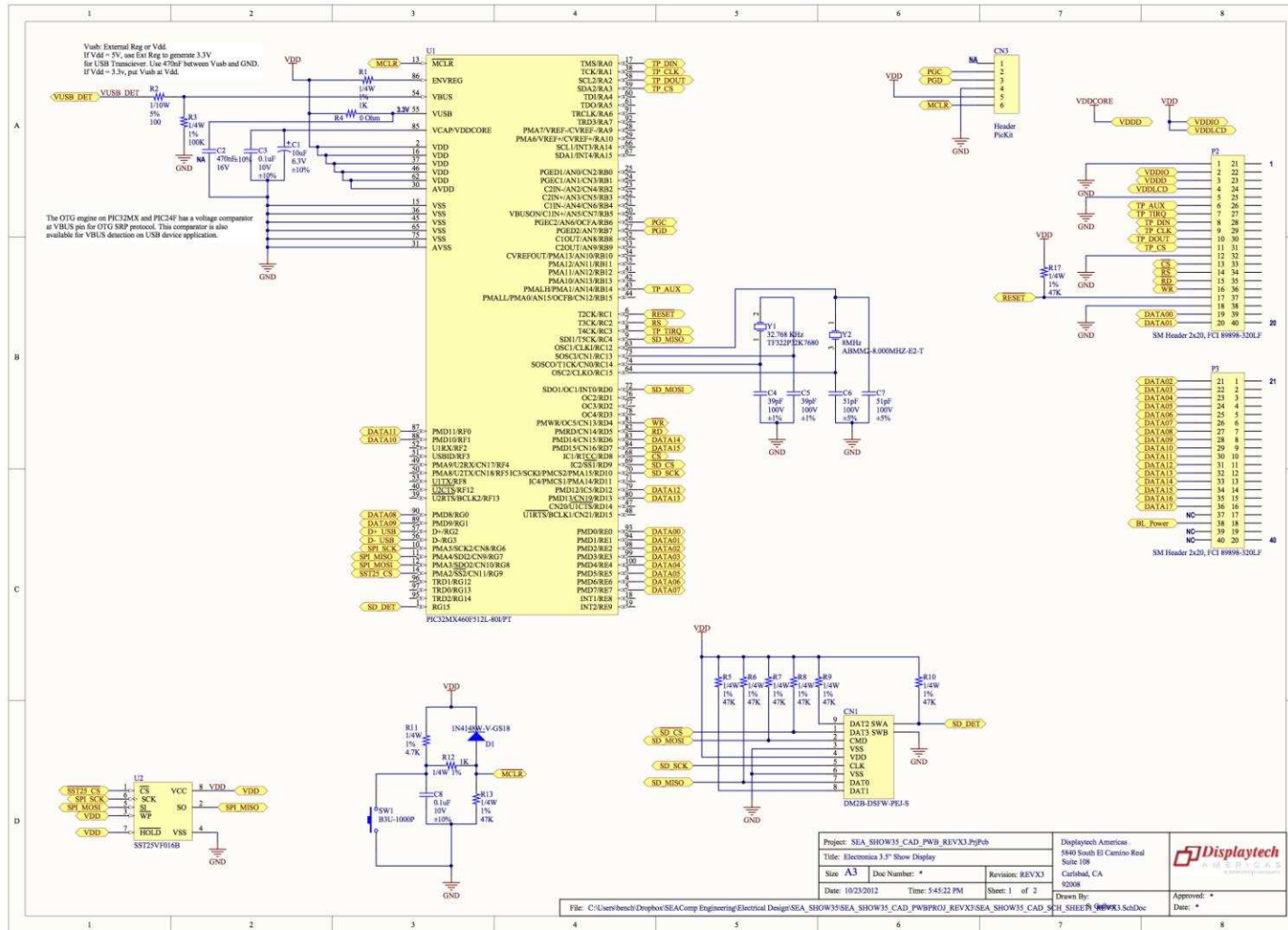
During the auto-initialization time, the PIC MCU should configure all I/O pins connected to the integrated board as inputs, as the on-board ATmega8 asserts control over these pins to configure the controller and driver. Please see the [INT035TFT datasheet](#) for more details.

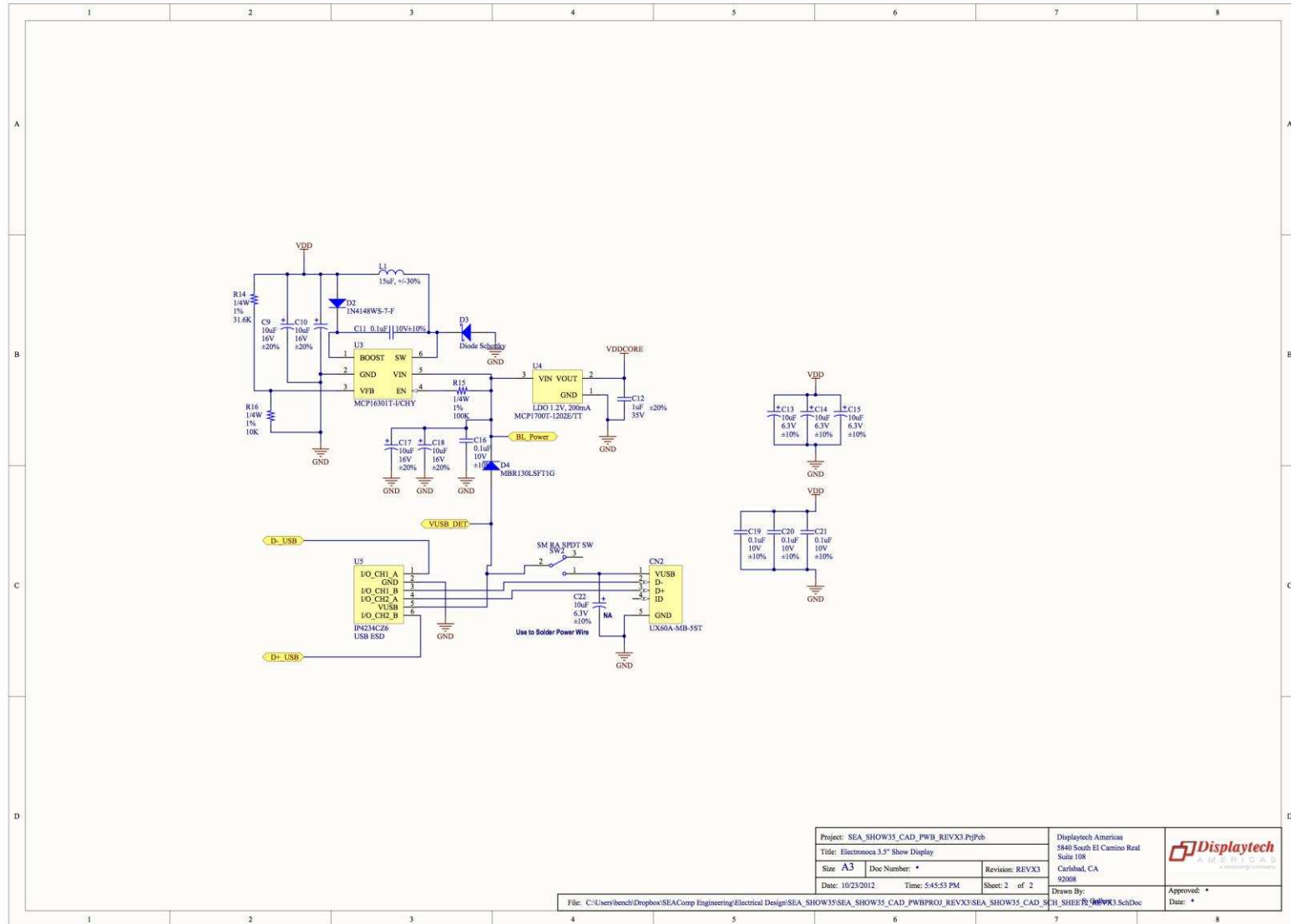
## 3. Example Software

Example software is available from Displaytech upon request. Please contact Displaytech at [sales@displaytech-us.com](mailto:sales@displaytech-us.com).



# 5. Schematic





## 6. Bill of Materials

Manufacturer	Part Number	Footprint	Qty	Value	Designator	Description
Kemet	T491A106M016AT	C1206	5	10uF	C1, C13, C14, C15, C22	Polarized Capacitor (Axial)
TDK	C1608X7R1C474K	0603	1	470nF	C2	Ceramic Capacitor
Kemet	C0603C104K8RACTU	0603	7	0.1uF	C3, C8, C11, C16, C19, C20, C21	Polarized Capacitor (Axial)
AVX	06031A390FAT2A	0603	2	39pF	C4, C5	Polarized Capacitor (Axial)
AVX	06031A510JAT2A	0603	2	51pF	C6, C7	Polarized Capacitor (Axial)
Kemet	T491A106M016AT	C1206	4	10uF	C9, C10, C17, C18	Polarized Capacitor (Axial)
TDK	C1608X7R1V105M	0603	1	1uF	C12	Ceramic Capacitor
Hirose	DM2B-DSFW-PEJ-S	-	1	-	CN1	CONN MEMORY MINI SD BOTTM MT SMD
Hirose	UX60A-MB-5ST	-	1	-	CN2	USB 2.0, Right Angle, SMT, MINI-B Type, Receptacle, 5 Position
3M	961106-5500-AR-PR	-	1	-	CN3	SM Header, 1x6-Pin, Right Angle, 0.1"
Vishay	1N4148W-V-GS18	SOD-123	1	-	D1	High Conductance Fast Diode
Vishay	1N4148WS-7-F	SOD323	1	-	D2	High Conductance Fast Diode
Diodes	ZLLS400TA	SOD323	1	-	D3	Schottky Rectifier
ON Semi	MBR130LSFT1G	SOD-123	1	-	D4	High Conductance Fast Diode
Sumida	CDRH6D28NP-150NC	-	1	15uF, +/-30%	L1	Inductor
FCI	89898-320LF	-	2	-	P2, P3	Header, SMT, 2x20-Pin, 0.1"
Vishay	CRCW06031K00FKEA HP	0603	2	1K	R1, R12	Resistor
Yageo	RC0603JR-07100RL	0603	1	100	R2	Resistor
Vishay	CRCW0603100KFKEA HP	0603	2	100K	R3, R15	Resistor

Manufacturer	Part Number	Footprint	Qty	Value	Designator	Description
Yageo	RC0603JR-070RL	0603	1	0 Ohm	R4	Resistor
Vishay	CRCW060347K0FKEA HP	0603	7	47K	R5, R6, R7, R8, R9, R10, R13	Resistor
Vishay	CRCW06034K70FKEA HP	0603	1	4.7K	R11	Resistor
Vishay	CRCW060331K6FKEA	0603	1	31.6K	R14	Resistor
Vishay	CRCW060310K0FKEA HP	0603	1	10K	R16	Resistor
Omron	B3U-1000P	ELTSM-65	1	-	SW1	Switch
NKK Switches	SS312SAH4	-	1	-	SW2	SM SPDT Sub Min Tog Switch, Right Angle
Microchip	PIC32MX460F512L- 80I/PT	TQFP-PT100	1	-	U1	80 MHz 32-Bit Microcontroller with USB, 512KB Program Memory, 100-pin TQFP
Microchip	SST25VF016B-75-4I- S2AF	SOIJ-SM8	1	-	U2	16mbit SPI Bus Serial flash, 8- Pin SOIJ, Industrial Temperature
Microchip	MCP16301T-I/CHY	SOT23-6_N	1	-	U3	Buck Adj 0.6A SOT23-6 Regulator. 2-15Vout, 4-30Vin
Microchip	MCP1700T-1202E/TT	SOT23-3	1	-	U4	LDO, 3-Pin SOT-23, 1.2V Out, 200mA
NXP	IP4234CZ6	SC-74, SOT0457	1	-	U5	Single USB 2.0 ESD protection to IEC 61000-4-2 level 4
CTS- Frequency Controls	TF322P32K7680	3215	1	-	Y1	Crystal Oscillator
CTS- Frequency Controls	ABMM2-8.000MHZ- E2-T	SMD 6mm x 3.6mm	1	-	Y2	Crystal Oscillator



## 7. Component Datasheets

Displaytech INT035TFT	<a href="#">Link</a>
Displaytech DT035TFT	<a href="#">Link</a>
Solomon Systech SSD1963	<a href="#">Link</a>
Maximum Integrated MAX11802	<a href="#">Link</a>
Microchip PIC32MX460F512L Microcontroller	<a href="#">Link</a>
SST SST25VF016B 16 Mbit SPI Serial Flash	<a href="#">Link</a>
Hirose DM2B-DSFW-PEJ-S	<a href="#">Link</a>
Microchip MCP16301T-I/CHY	<a href="#">Link</a>
Microchip MCP1700T-1202E/TT	<a href="#">Link</a>