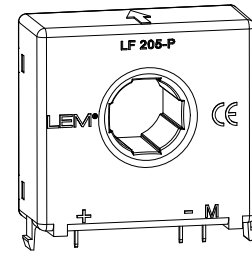


# Current Transducer LF 205-P/SP1

For the electronic measurement of currents: DC, AC, pulsed..., with galvanic isolation between the primary circuit and the secondary circuit.



$$I_{PN} = 200 \text{ A}$$



## Electrical data

$I_{PN}$	Primary nominal current rms	200	A				
$I_{PM}$	Primary current, measuring range	0 .. $\pm 420$	A				
$R_M$	Measuring resistance @	$T_A = 70^\circ\text{C}$		$T_A = 85^\circ\text{C}$			
			$R_{M \min}$	$R_{M \max}$	$R_{M \min}$	$R_{M \max}$	
		with $\pm 12 \text{ V}$	@ $\pm 200 \text{ A}_{\max}$	0	71	0	69
			@ $\pm 420 \text{ A}_{\max}$	0	14	0	12
		with $\pm 15 \text{ V}$	@ $\pm 200 \text{ A}_{\max}$	0	100	23	98
	@ $\pm 420 \text{ A}_{\max}$	0	28	23	26		
$I_{SN}$	Secondary nominal current rms	100	mA				
$K_N$	Conversion ratio	1 : 2000					
$V_C$	Supply voltage (+ 5 %)	$\pm 12 \dots 15$	V				
$I_C$	Current consumption @ $\pm 15 \text{ V}$	$17 + I_S$	mA				

## Accuracy - Dynamic performance data

$X_G$	Overall accuracy @ $I_{PN}$ , $T_A = 25^\circ\text{C}$	$\pm 0.5$	%
$\epsilon_L$	Linearity error	$< 0.1$	%
$I_O$	Offset current @ $I_P = 0$ , $T_A = 25^\circ\text{C}$	Typ	$\pm 0.2$
		Max	$\pm 0.2$
$I_{OM}$	Magnetic offset current <sup>1)</sup> @ $I_P = 0$ and specified $R_M$ , after an overload of $3 \times I_{PN}$	$\pm 0.1$	mA
$I_{OT}$	Temperature variation of $I_O$ - $40^\circ\text{C} \dots +85^\circ\text{C}$	$\pm 0.12$	$\pm 0.4$
$t_{ra}$	Reaction time to 10 % of $I_{PN}$ step	$< 500$	ns
$t_r$	Response time <sup>2)</sup> to 90 % of $I_{PN}$ step	$< 1$	$\mu\text{s}$
$di/dt$	$di/dt$ accurately followed	$> 100$	A/ $\mu\text{s}$
<b>BW</b>	Frequency bandwidth (- 3 dB)	DC .. 100	kHz

## General data

$T_A$	Ambient operating temperature	- 40 .. + 85	$^\circ\text{C}$
$T_S$	Ambient storage temperature	- 40 .. + 90	$^\circ\text{C}$
$R_S$	Secondary coil resistance	@ $T_A = 70^\circ\text{C}$	33
		@ $T_A = 85^\circ\text{C}$	35
$m$	Mass	58	g
	Standards	EN 50178: 1997	

## Features

- Closed loop (compensated) current transducer using the Hall effect
- Isolated plastic case recognized according to UL 94-V0.

## Special features

- Mounting clips moulded into the transducer housing, attach to printed circuit boards 1.6 mm thick.

## Advantages

- Excellent accuracy
- Very good linearity
- Low temperature drift
- Optimized response time
- Wide frequency bandwidth
- No insertion losses
- High immunity to external interference
- Current overload capability.

## Applications

- AC variable speed drives and servo motor drives
- Static converters for DC motor drives
- Battery supplied applications
- Uninterruptible Power Supplies (UPS)
- Switched Mode Power Supplies (SMPS)
- Power supplies for welding applications.

## Application domain

- Industrial.

**Notes:** <sup>1)</sup> As a result of the coercive force (Hc) of the magnetic circuit

<sup>2)</sup> With a  $di/dt$  of 100 A/ $\mu\text{s}$ .

## Current Transducer LF 205-P/SP1

### Isolation characteristics

$V_d$	Rms voltage for AC insulation test, 50 Hz, 1 min	3.5	kV
$\hat{V}_w$	Impulse withstand voltage 1.2/50 $\mu$ s	8.8	kV
$V_e$	Partial discharge extinction voltage rms @ 10 pC	> 2	kV
		Min	
<b>dCp</b>	Creepage distance	9.5	mm
<b>dCI</b>	Clearance	9.5	mm
<b>CTI</b>	Comparative Tracking Index (group IIIa)	175	

### Applications examples

According to EN 50178 and IEC 61010-1 standards and following conditions:

- Over voltage category OV 3
- Pollution degree PD2
- Non-uniform field

	EN 50178	IEC 61010-1
<b>dCp, dCI, <math>\hat{V}_w</math></b>	Rated insulation voltage	Nominal voltage
Basic insulation	800 V	800 V
Reinforced insulation	400 V	300 V

### Safety



This transducer must be used in electric/electronic equipment with respect to applicable standards and safety requirements in accordance with the manufacturer's operating instructions.



Caution, risk of electrical shock

When operating the transducer, certain parts of the module can carry hazardous voltage (eg. primary busbar, power supply).

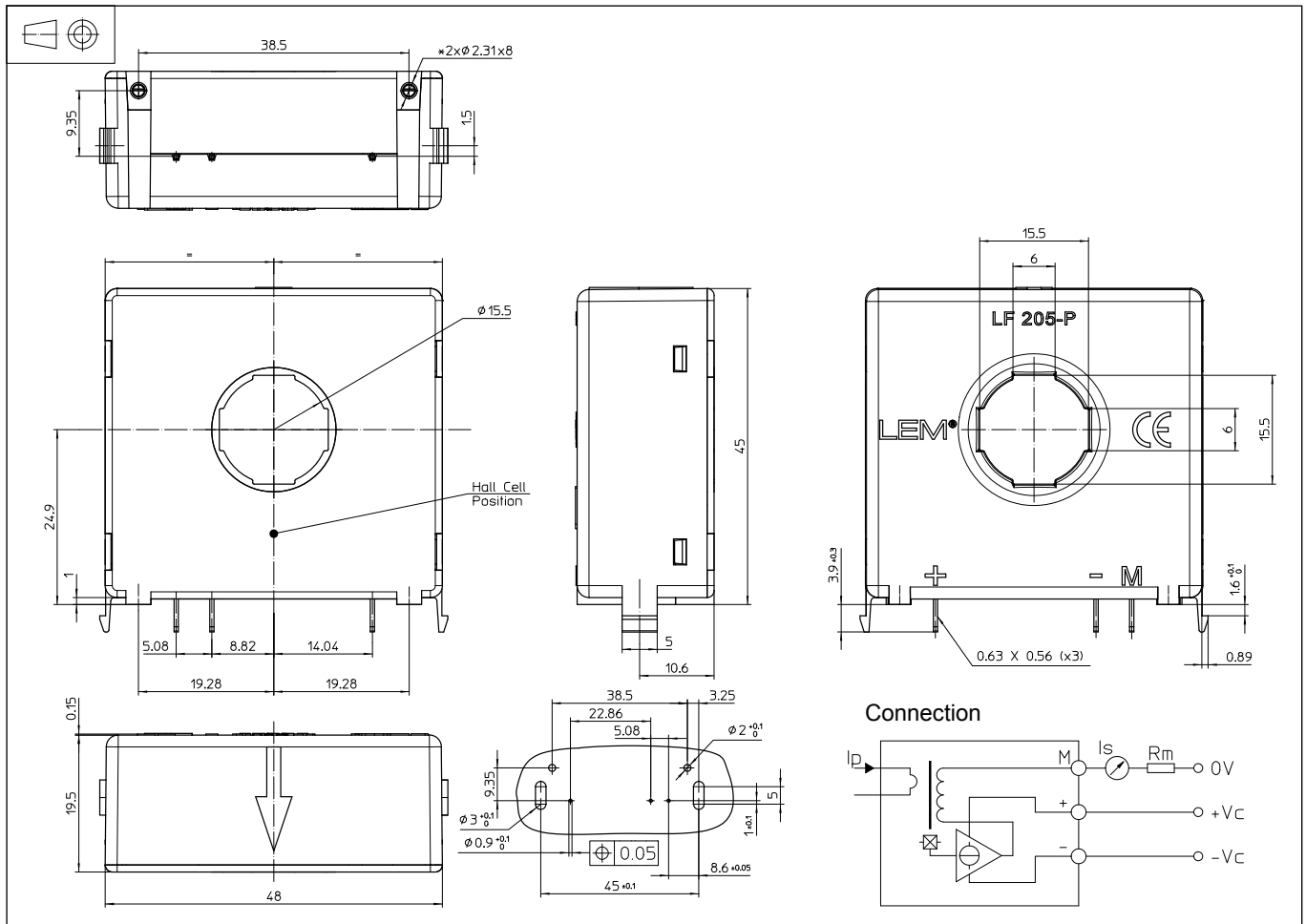
Ignoring this warning can lead to injury and/or cause serious damage.

This transducer is a build-in device, whose conducting parts must be inaccessible after installation.

A protective housing or additional shield could be used.

Main supply must be able to be disconnected.

## Dimensions LF 205-P/SP1 (in mm)



### Mechanical characteristics

- General tolerance  $\pm 0.2$  mm
- Secondary connection 3 pins 0.63 x 0.56 mm  
Recommended PCB hole  $\varnothing 0.9$  mm
- Primary through-hole  $\varnothing 15.5$  mm
- Supplementary fastening 2 holes  $\varnothing 2.31$  mm  
Recommended PCB hole  $\varnothing 2.4$  mm  
Recommended screws KA22 x 6

### Remarks

- $I_S$  is positive when  $I_p$  flows in the direction of the arrow.
- Temperature of the primary conductor should not exceed 100°C.
- Dynamic performances ( $di/dt$  and response time) are best with a single bar completely filling the primary hole.