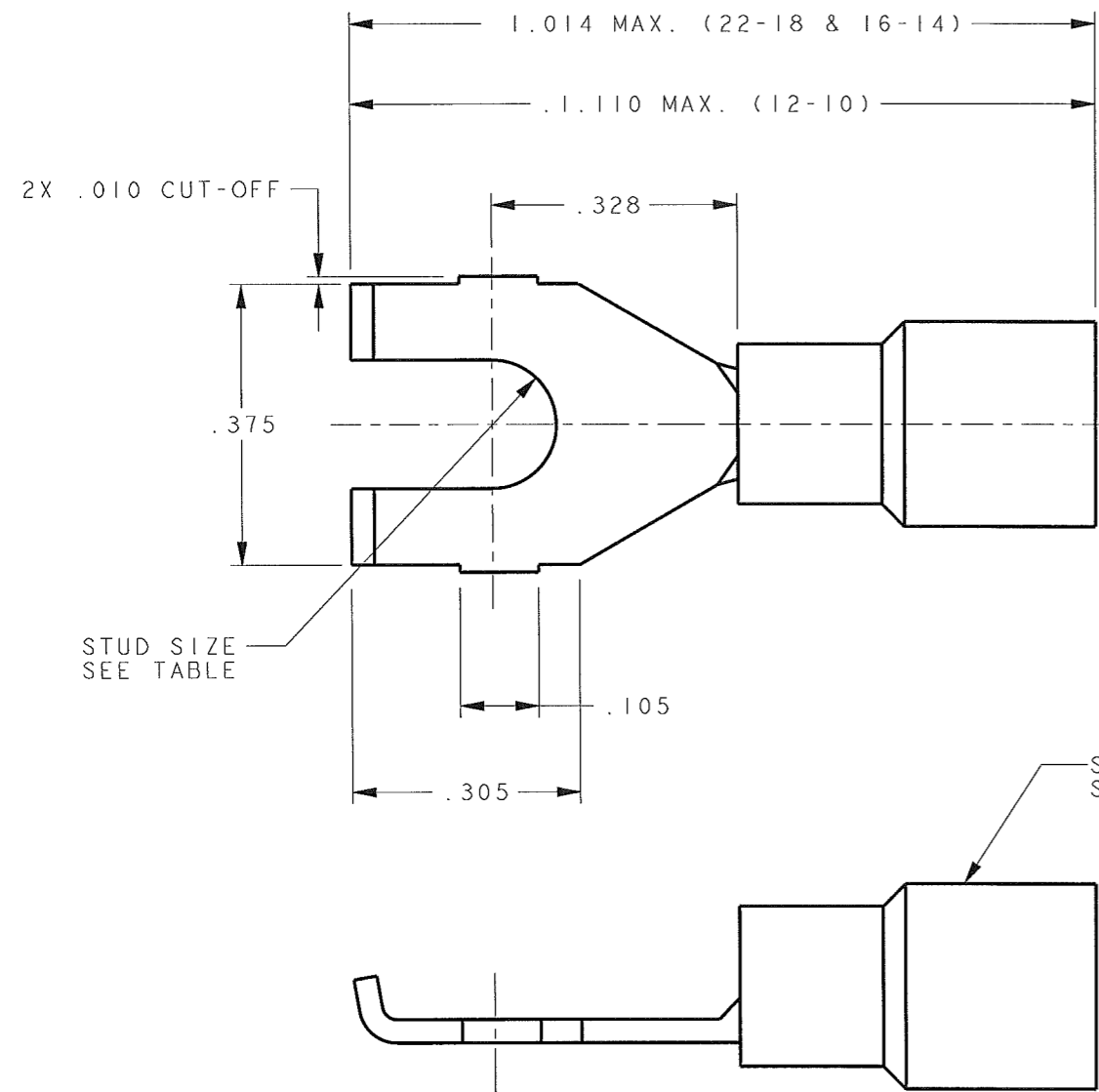


CUSTOMER DRAWING

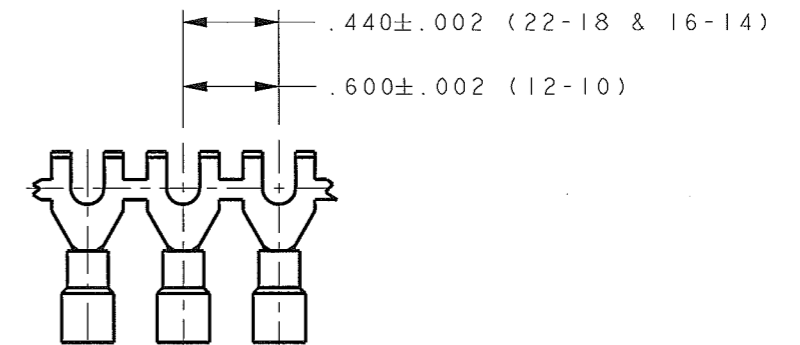
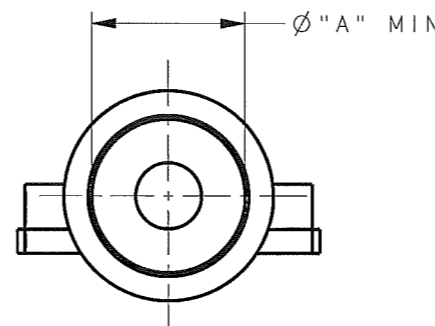
P/N: 7504358-7504678 REV B

PART NO.	"A" MIN. Ø	SLEEVE COLOR	WIRE SIZE	STUD SIZE
7504358	.142	RED	22-18	#6
7504398	.197	BLUE	16-14	
7504438	.257	YELLOW	12-10	#8
7504478	.142	RED	22-18	
7504518	.197	BLUE	16-14	#10
7504558	.257	YELLOW	12-10	
7504598	.142	RED	22-18	#10
7504638	.197	BLUE	16-14	
7504678	.257	YELLOW	12-10	



- NOTES:
- MATERIAL:
 TERMINAL: .031 THICK COPPER
 PRE-ELECTRO-TIN PLATE: (22-18 & 16-14AWG)
 .040 THICK COPPER
 PRE-ELECTRO-TIN PLATE: (12-10AWG)
 SLEEVE: 6/6 NYLON
 - RECOMMENDED STRIP LENGTH: 9/32 ± 1/32 (22-18 & 16-14)
 5/16 ± 3/64 (12-10)
 - FOR LOOSE PIECE PARTS, ADD SUFFIX 1 TO PART NUMBER (e.g. 75043581)
 - FOR STANDARD REELING SEE FIGURE 1.

ARK-LES UNCONTROLLED



FABRICATED TERMINAL STRIP SCALE 1X

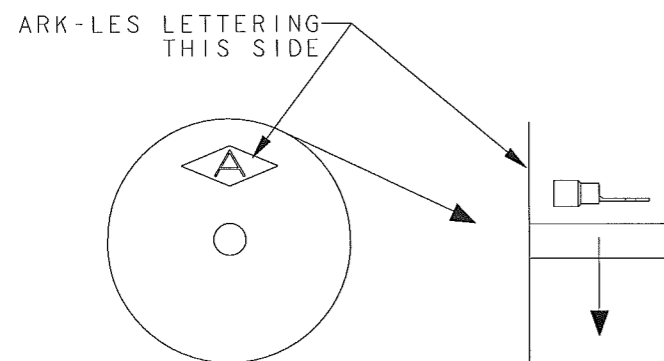


FIGURE 1 REELING DIAGRAM

				PRINT DIST.	PROD. REL. ECR12541	8-1-2003	CHK'D	TOLERANCES UNLESS OTHERWISE SPECIFIED	STOUGHTON, MA
				DEPT #	QUOTE REL.		003/1/07	DECIMALS ± .010	
				ENG 1	DRAWN BY BJC	5/13/03	APP.	METRIC ± 0.25mm	ORIGINAL IF RED ASSEMBLY/CUSTOMER .375 PRE-INSULATED FLANGED SPADE TERMINAL
				SALES	SUPERSEDES DWG. DATED:		ET 3-1-07	ANGLES ± 1°	
B	REV. PER ECR#S000228	2/9/07	DON	STO 8	SCALE 4X	DO NOT SCALE PRINT			PART NAME
A	PROD. REL. PER ECR #12541	5/13/03	BJC	RAL	MATERIAL: SEE NOTE 1				CAD#: .375FLANGED-SPADE-ASSY-REVB-CUST
REV.	DESCRIPTION	DATE	DR.	JZ	FINISH: SEE NOTE 1				P/N: 7504358-7504678
				CHINA					REV B

