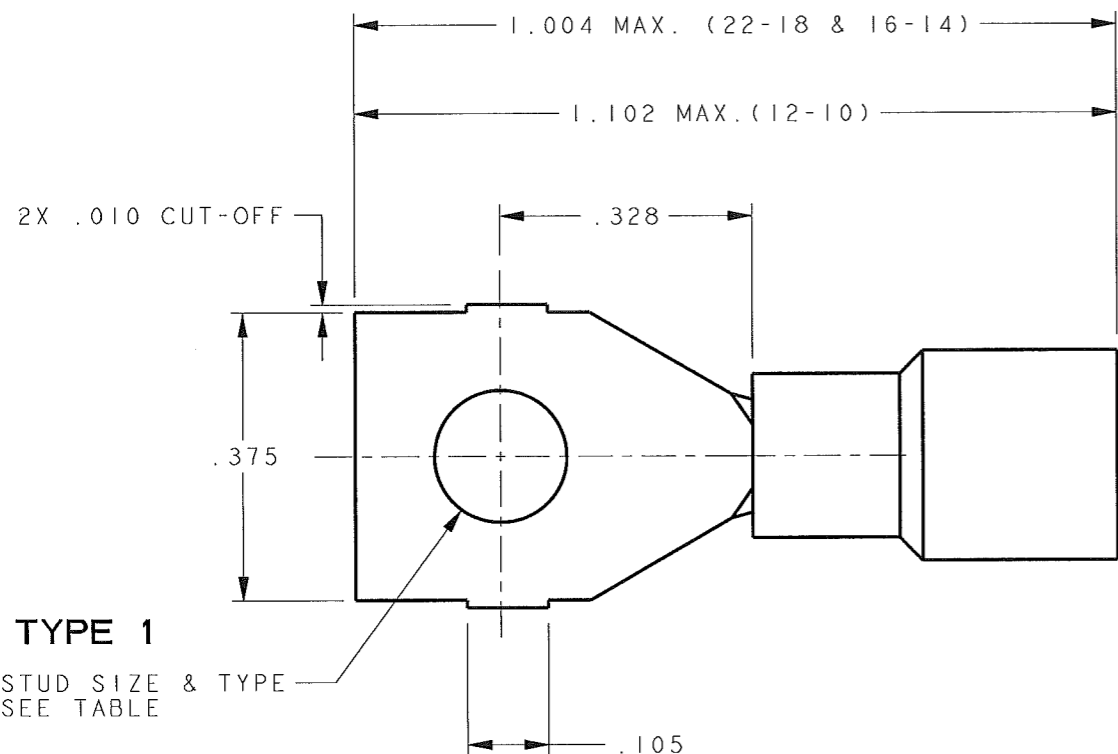


CUSTOMER DRAWING

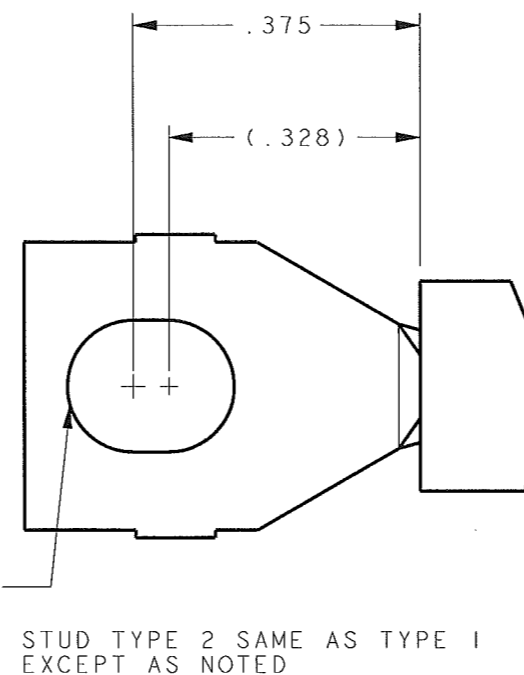
P/N: 7504838-7505158

REV
C

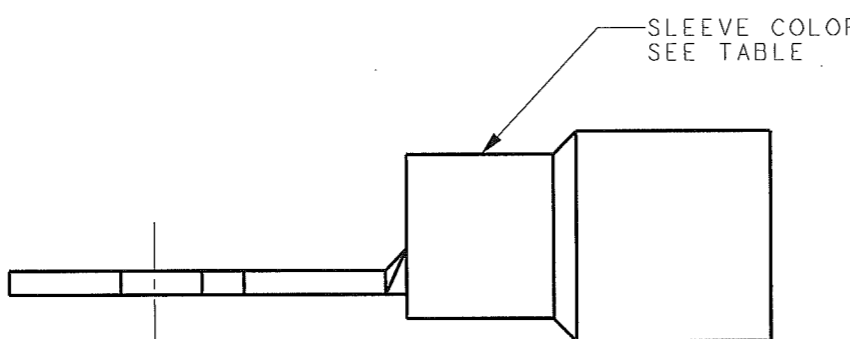
PART NO.	Ø "A" MIN.	SLEEVE COLOR	WIRE SIZE	STUD SIZE
7504838	.142	RED	22-18	#6 TYPE 1
7504878	.197	BLUE	16-14	
7504918	.257	YELLOW	12-10	
7504958	.142	RED	22-18	#8 TYPE 1
7504998	.197	BLUE	16-14	
7505038	.257	YELLOW	12-10	
7505048	.257	YELLOW	12-10	#8 TYPE 2
7505078	.142	RED	22-18	#10 TYPE 1
7505118	.197	BLUE	16-14	
7505158	.257	YELLOW	12-10	



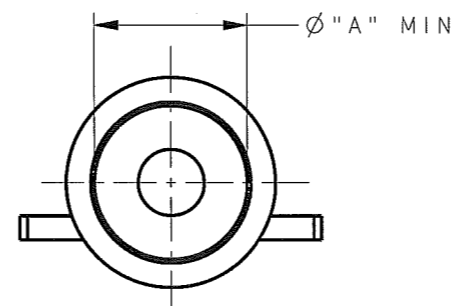
TYPE 1
STUD SIZE & TYPE
SEE TABLE



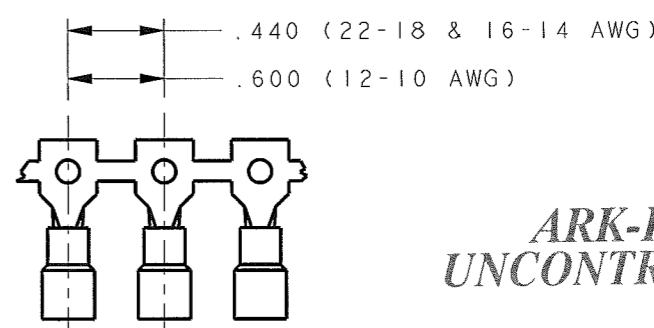
TYPE 2
STUD SIZE & TYPE
SEE TABLE
STUD TYPE 2 SAME AS TYPE 1
EXCEPT AS NOTED



SLEEVE COLOR
SEE TABLE



- NOTES:
- MATERIAL:
TERMINAL: .031 THICK COPPER
PRE-ELECTRO-TIN PLATE: (22-18 & 16-14AWG)
.040 THICK COPPER
PRE-ELECTRO-TIN PLATE: (12-10AWG)
SLEEVE: 6/6 NYLON
 - RECOMMENDED STRIP LENGTH: 9/32 ± 1/32 (22-18 & 16-14)
5/16 ± 3/64 (12-10)
 - FOR LOOSE PIECE PARTS, ADD SUFFIX 1
TO PART NUMBER (e.g. 75048381)
 - FOR STANDARD REELING SEE FIGURE 1.



FABRICATED TERMINAL STRIP
SCALE 1X

ARK-LES
UNCONTROLLED

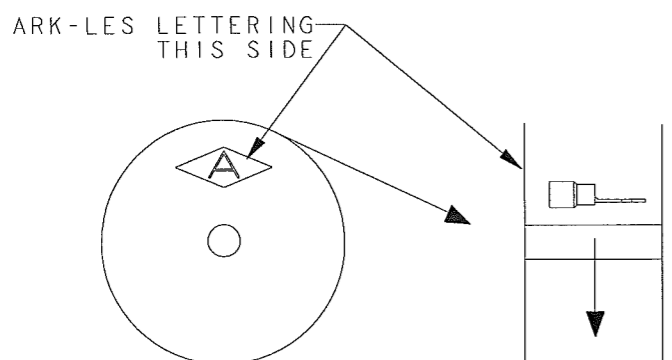


FIGURE 1
REELING DIAGRAM

PRINT DIST.	PROD. REL. ECR12541	8-1-03	CHK'D	TOLERANCES UNLESS OTHERWISE SPECIFIED	 CORPORATION STOUGHTON, MA	
DEPT #	QUOTE REL.		Do Miller	DECIMALS ± .010		
ENG I	DRAWN BY	BJC 5/13/03	APP.	METRIC ± 0.25mm	PART NAME CUSTOMER/ASSEMBLY .375 PRE-INSULATED SQ. SPADE TERMINAL	
SALES	SUPERSEDES DWG. DATED:		BT 3/2/07	ANGLES ± 1°		
STO X	SCALE 4X	DO NOT SCALE PRINT		 3RD ANGLE PROJECTION DWG SIZE: B	CAD#: .375SQ-SPADE-ASSY	
RAL	MATERIAL: SEE NOTE 1				P/N: 7504838-7505158	
JZ	REV.	DESCRIPTION	DATE	DR.	FINISH: SEE NOTE 1	REV C
CHINA						