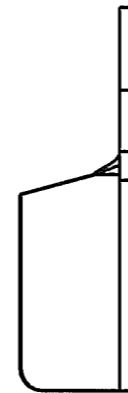
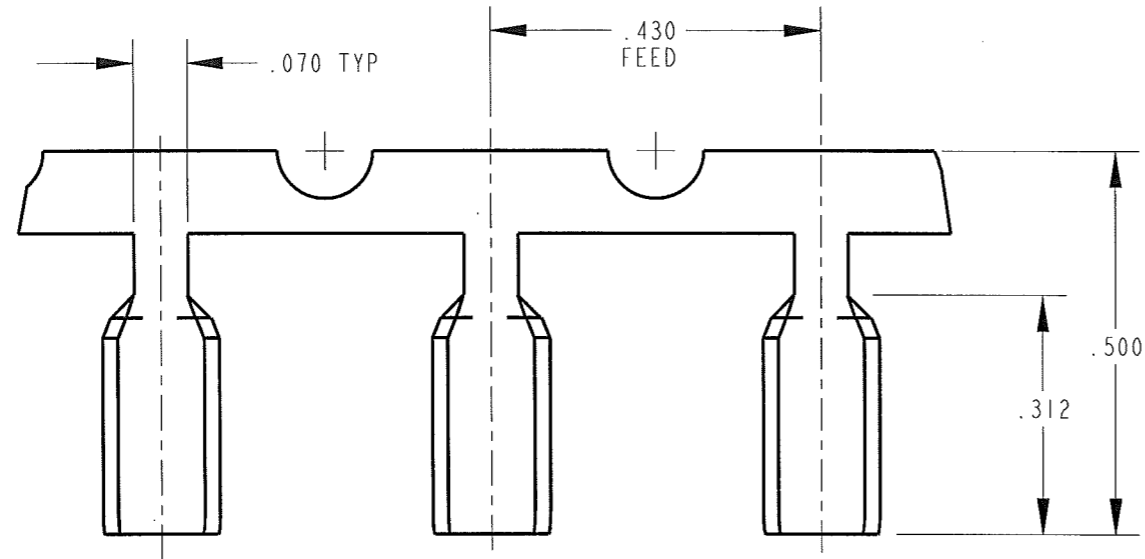


CUSTOMER DRAWING

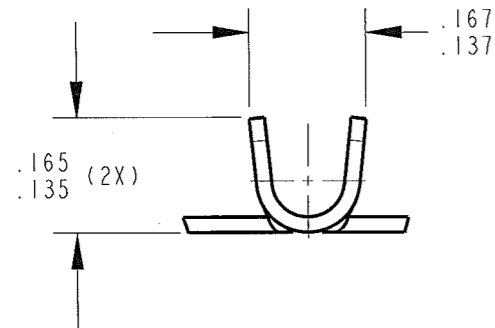
P/N: 3800S 175/-3

REV
J

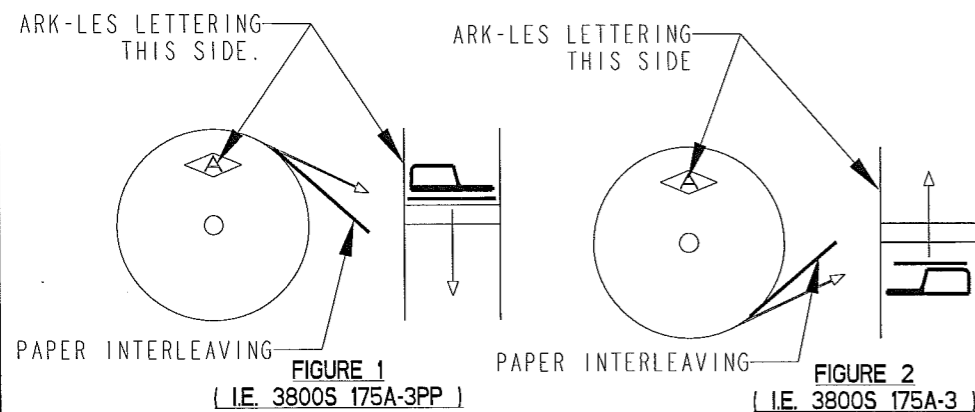
PART NUMBER	MATERIAL	FINISH
3800S 175A-3	.020 THICK BRASS	PRETINNED
3800S 175AB-3	.020 THICK BRASS	NONE
3800S 175AD-3	.020 THICK BRASS	POST-TIN



- NOTES:
1. CMA RANGE: 1600 TO 5000
 2. FOR PIGTAIL SPLICES USED IN A BENCH APPLICATOR, ADD SUFFIX "PP" TO PART NUMBER (i.e. 3800S 175A-3PP), SEE FIGURE 1 FOR REELING.
 3. FOR THROUGH SPLICES USED IN A BENCH APPLICATOR, THE PART NUMBER REMAINS THE SAME AS IN THE TABLE (i.e. 3800S 175A-3). SEE FIGURE 2 FOR REELING.
 4. FOR PIGTAIL AND THROUGH SPLICES USED IN A SLIM-LINE AIR PRESS, THE PART NUMBER REMAINS THE SAME AS IN THE TABLE (i.e. 3800S 175A-3). SEE FIGURE 2 FOR REELING.
 5. PAPER INTERLEAVING ADDED TO REDUCE TANGLING IN REELS.



ARK-LES
UNCONTROLLED



PRINT DIST.	PROD. REL.	SK0678	11/10/1980	CHK'D	TOLERANCES UNLESS OTHERWISE SPECIFIED	 STOUGHTON, MA
DEPT #	QUOTE REL.			APP.	DECIMALS ±.010	
ENG X	DRAWN BY D.O'NEILL 11/03/06			APP.	METRIC ±0.25mm	ORIGINAL IF RED PART NAME CUSTOMER DRAWING SPLICE TERMINAL
SALES	SUPERSEDES DWG. DATED: 4/6/1993			APP.	ANGLES ±1°	
STO X	SCALE 4:1	DO NOT SCALE PRINT			3RD ANGLE PROJECTION	CAD#: 3800S_175-3-REVJ_CUST
RAL	MATERIAL: SEE TABLE				DWG SIZE: B	P/N: 3800S 175/-3
JZ						REV J
CHINA						
REV.	DESCRIPTION	DATE	DR.			
J	REV/REDRWN ECR# S000127	11/03/06	DON			