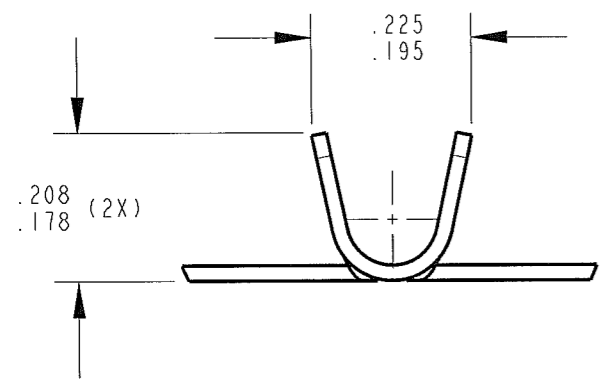
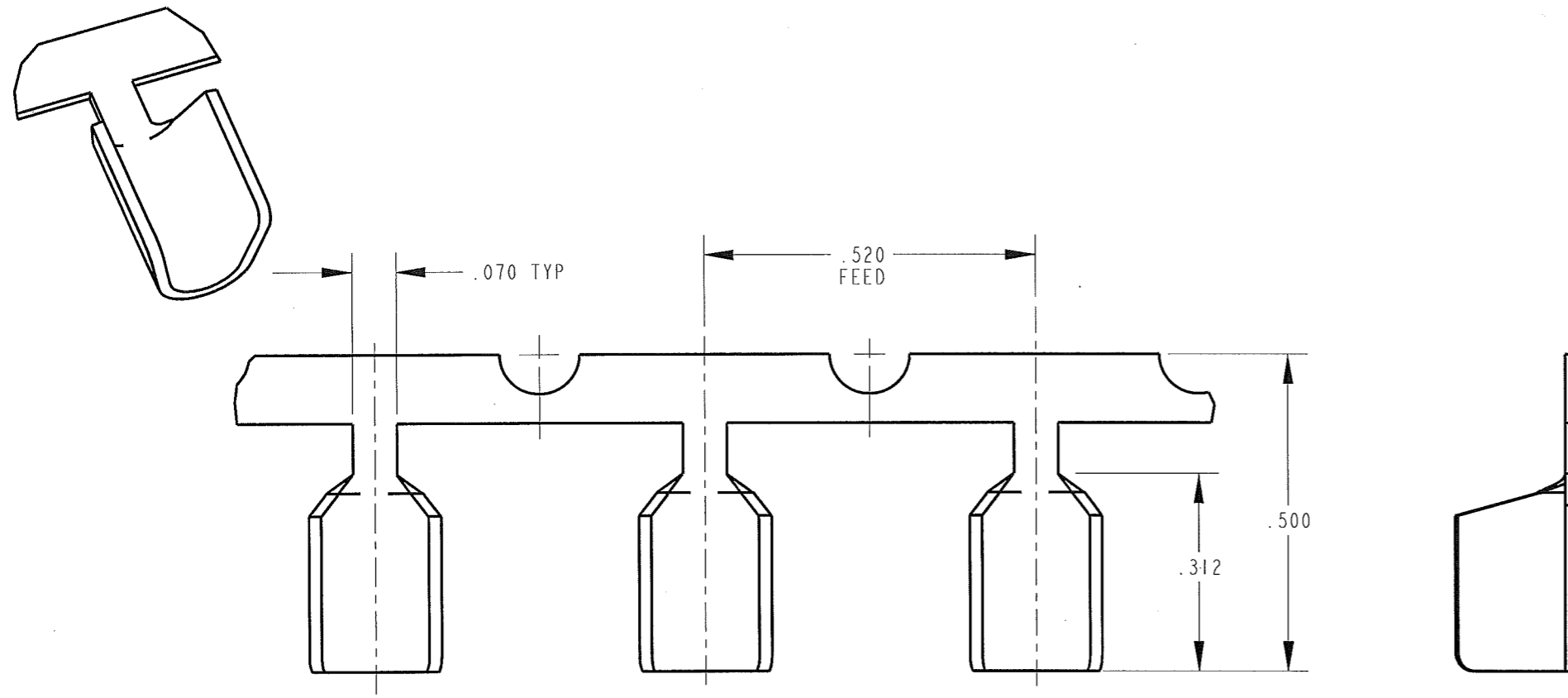


CUSTOMER DRAWING

P/N: 3800S 175/-4

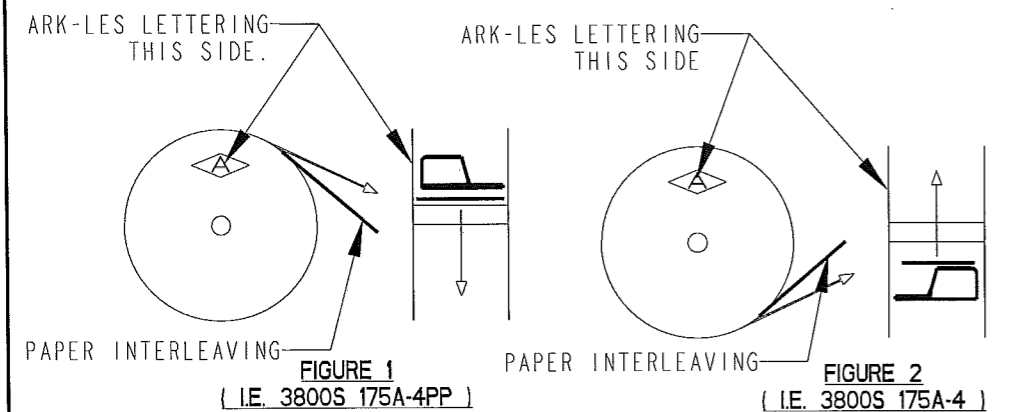
REV
K

PART NUMBER	MATERIAL	FINISH
3800S 175A-4	.020 THICK BRASS	PRETINNED
3800S 175AB-4	.020 THICK BRASS	NONE
3800S 175AD-4	.020 THICK BRASS	POST-TIN



- NOTES:
1. CMA RANGE: 3000 TO 6700
 2. FOR PIGTAIL SPLICES USED IN A BENCH APPLICATOR, ADD SUFFIX "PP" TO PART NUMBER (i.e. 3800S 175A-4PP), SEE FIGURE 1 FOR REELING.
 3. FOR THROUGH SPLICES USED IN A BENCH APPLICATOR, THE PART NUMBER REMAINS THE SAME AS IN THE TABLE (i.e. 3800S 175A-4). SEE FIGURE 2 FOR REELING.
 4. FOR PIGTAIL AND THROUGH SPLICES USED IN A SLIM-LINE AIR PRESS, THE PART NUMBER REMAINS THE SAME AS IN THE TABLE (i.e. 3800S 175A-4). SEE FIGURE 2 FOR REELING.
 5. PAPER INTERLEAVING ADDED TO REDUCE TANGLING IN REELS.

ARK-LES
UNCONTROLLED



PRINT DIST.	PROD. REL.	SK0678	11/10/1980	CHK'D	TOLERANCES UNLESS OTHERWISE SPECIFIED	 STOUGHTON, MA
DEPT #	QUOTE REL.			00/11/17/06	DECIMALS ±.010	
ENG X	DRAWN BY	D. O'NEILL	11/103/06	APP.	METRIC ±0.25mm	ORIGINAL IF RED
SALES	SUPERSEDES DWG. DATED:	6/9/1997	11-17-06		ANGLES ±1°	PART NAME CUSTOMER DRAWING SPLICE TERMINAL
STO X	SCALE	4:1	DO NOT SCALE PRINT			CAD#: 3800S_175-4-REVK_CUST
RAL	MATERIAL:	SEE TABLE				P/N: 3800S 175/-4
JZ	FINISH:	SEE TABLE				REV K
CHINA						