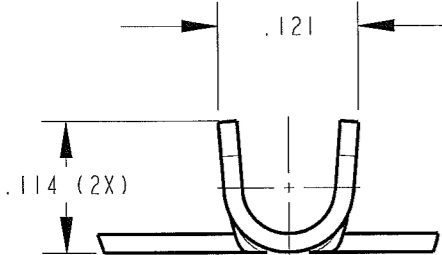
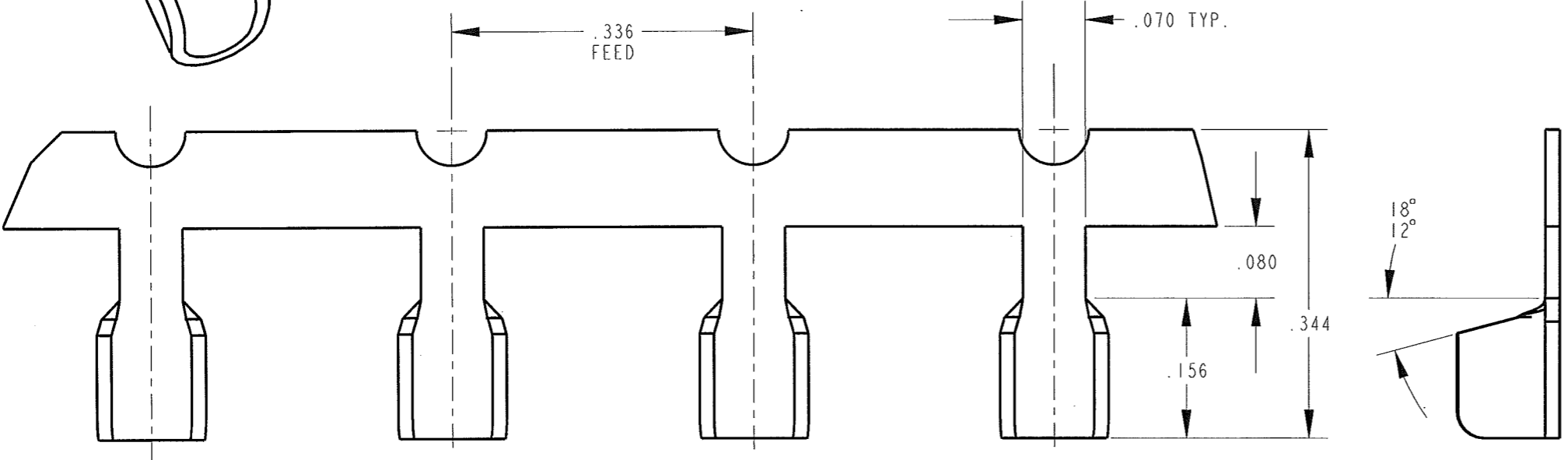
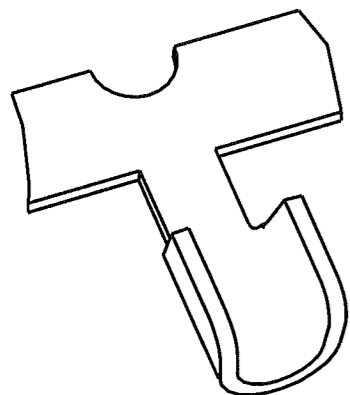


CUSTOMER DRAWING

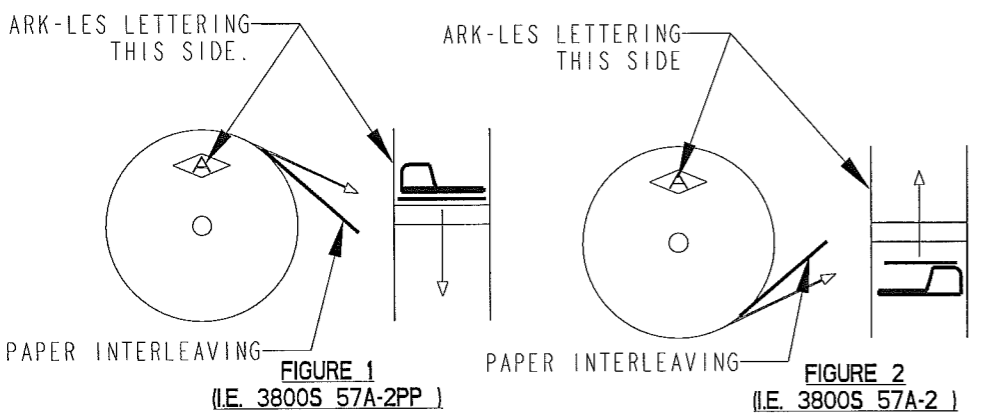
P/N: 3800S 57A1-2
REV U

PART NUMBER	MATERIAL	FINISH
3800S 57A-2	.016 THICK BRASS	PRETINNED
3800S 57AB-2	.016 THICK BRASS	NONE



- NOTES:
1. CMA RANGE: 700-2750
 2. FOR PIGTAIL SPLICE USED IN BENCH APPLICATOR ADD SUFFIX "PP" TO PART NUMBER (I.E. 3800S 57A-2PP), SEE FIGURE 1 FOR REELING.
 3. FOR THROUGH SPLICES USED IN A BENCH APPLICATOR SEE FIGURE 2 FOR REELING.
 4. FOR PIGTAIL AND THROUGH SPLICES USED IN A SLIM-LINE AIR PRESS, SEE FIGURE 2 FOR REELING.
 5. SPLICES TO BE INTERLEAVED WITH .007 THICK KRAFT PAPER.

ARK-LES UNCONTROLLED



PRINT DIST.	PROD. REL. 95176	10/23/73	CHK'D	TOLERANCES UNLESS OTHERWISE SPECIFIED
DEPT #	QUOTE REL. 92128	5/24/73	DD 11/17/06	DECIMALS ±.010
ENG X	DRAWN BY D.O'NEILL 11/03/06		APP.	METRIC ±0.25mm
SALES	SUPERSEDES DWG. DATED: 8/15/95	ET 11/17/96		ANGLES ±1°
STO X	SCALE 6:1	DO NOT SCALE PRINT		3RD ANGLE PROJECTION
RAL	MATERIAL: SEE TABLE			DWG SIZE: B
JZ	FINISH: SEE TABLE			
CHINA				

Ark-Les CORPORATION STOUGHTON, MA

ORIGINAL IF RED

PART NAME CUSTOMER DRAWING SPLICE TERMINAL

CAD#: 3800S_57A-2-REVU_CUST

P/N: 3800S 57A1-2

REV U

REV.	DESCRIPTION	DATE	DR.
U	REV/REDRWN ECR# S000127	11/03/06	DON