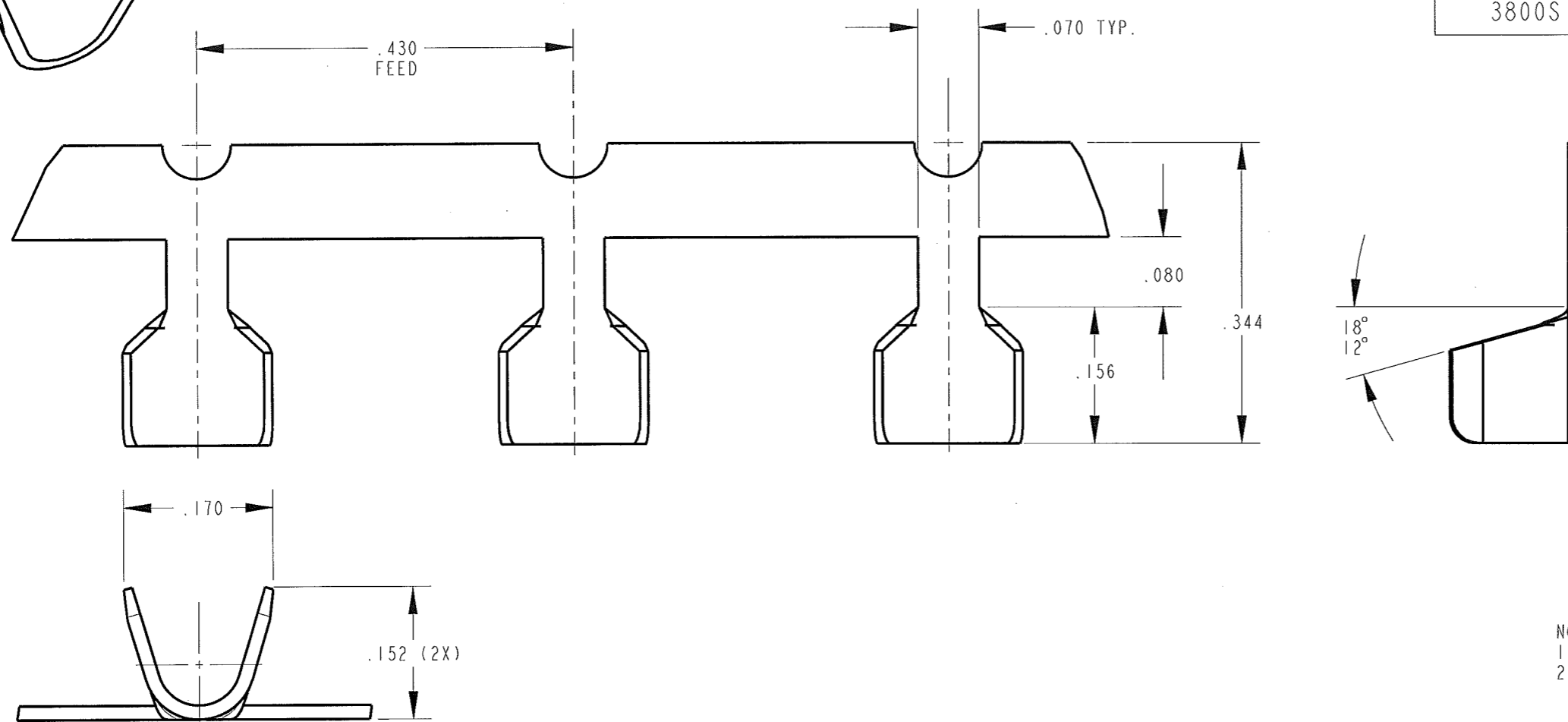


CUSTOMER DRAWING

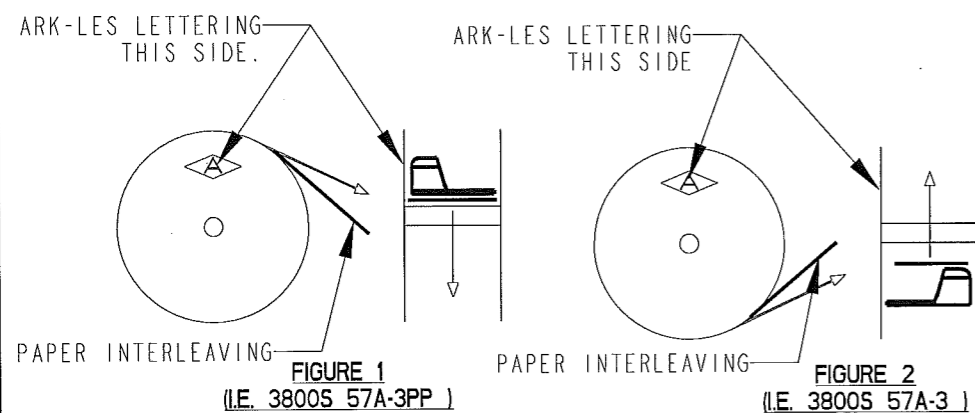
P/N: 3800S 57A/-3  
REV U

PART NUMBER	MATERIAL	FINISH
3800S 57A-3	.016 THICK BRASS	PRETINNED
3800S 57AB-3	.016 THICK BRASS	NONE
3800S 57AN-3	.016 THICK BRASS	PRE-NICKEL



**ARK-LES  
UNCONTROLLED**

- NOTES:
1. CMA RANGE: 1600-5000
  2. FOR PIGTAIL SPLICE USED IN BENCH APPLICATOR ADD SUFFIX "PP" TO PART NUMBER (I.E. 3800S 57A-3PP), SEE FIGURE 1 FOR REELING.
  3. FOR THROUGH SPLICES USED IN A BENCH APPLICATOR SEE FIGURE 2 FOR REELING.
  4. FOR PIGTAIL AND THROUGH SPLICES USED IN A SLIM-LINE AIR PRESS, SEE FIGURE 2 FOR REELING.
  5. SPLICES TO BE INTERLEAVED WITH .007 THICK KRAFT PAPER.



PRINT DIST.	PROD. REL. 95176	10/23/73	CHK'D	TOLERANCES UNLESS OTHERWISE SPECIFIED	 CORPORATION STOUGHTON, MA	
DEPT #	QUOTE REL. 92128	5/24/73	DO'NEILL	DECIMALS ±.010		
ENG X	DRAWN BY D.O'NEILL 11/03/06		APP.	METRIC ±0.25mm	<b>ORIGINAL IF RED</b>	
SALES	SUPERSEDES DWG. DATED: 8/15/95		ET 11/11/06	ANGLES ±1°	PART NAME CUSTOMER DRAWING SPLICE TERMINAL	
STO X	SCALE 6:1		DO NOT SCALE PRINT		CAD#: 3800S_57A-3-REVU_CUST	
RAL	MATERIAL: SEE TABLE				P/N: 3800S 57A/-3	
JZ	U REV/REDRWN ECR# S000127	11/03/06	DON	3RD ANGLE PROJECTION	REV U	
CHINA	REV.	DESCRIPTION	DATE	DR.	FINISH: SEE TABLE	