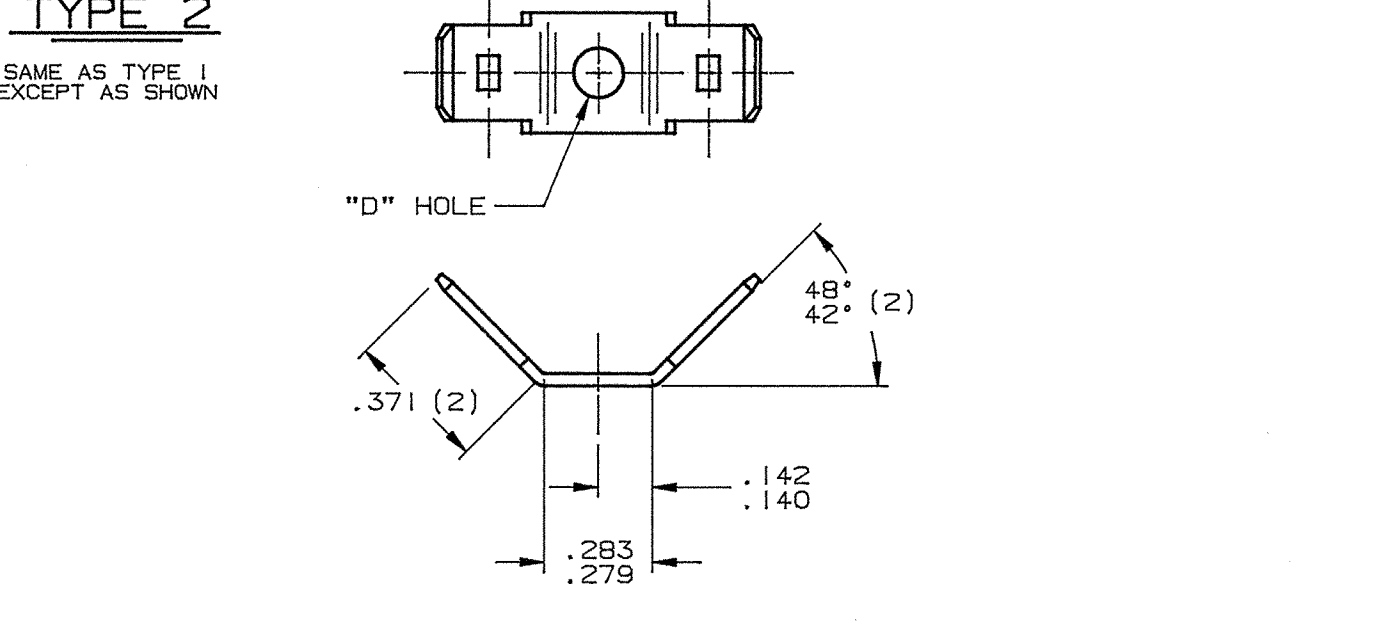
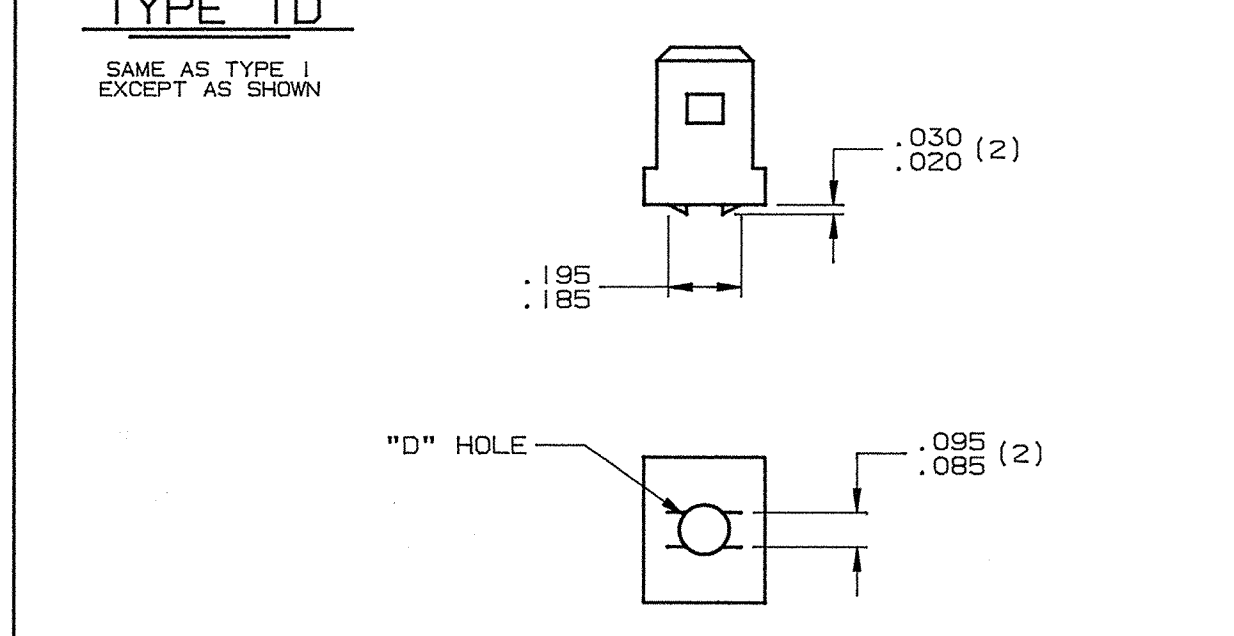
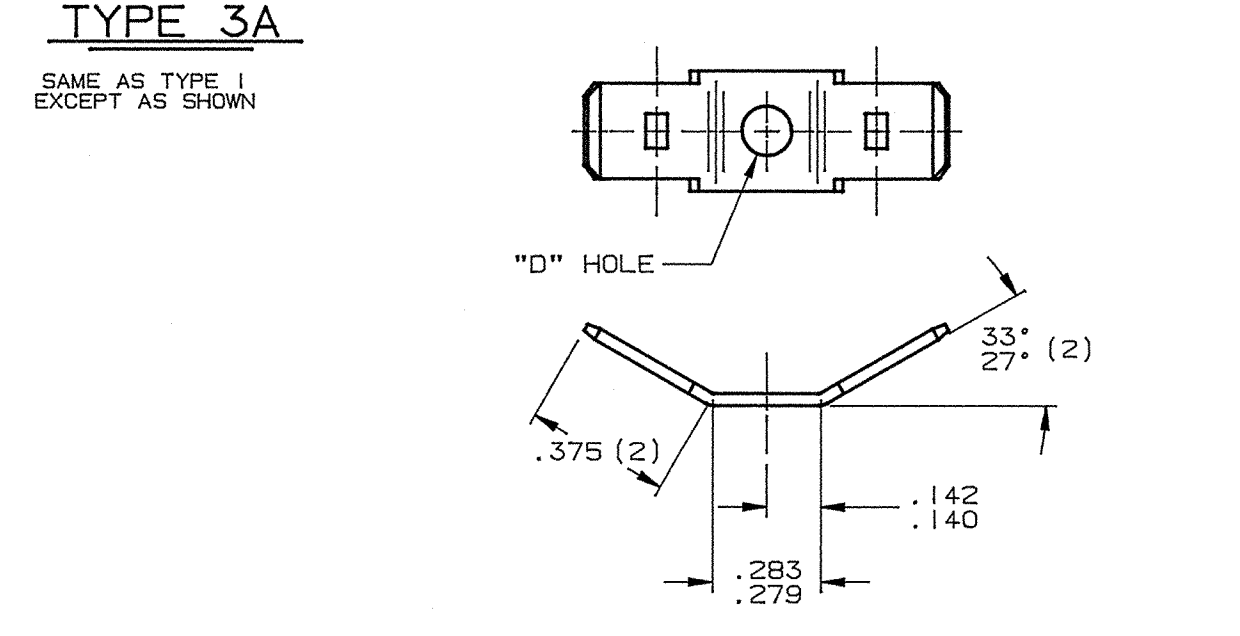
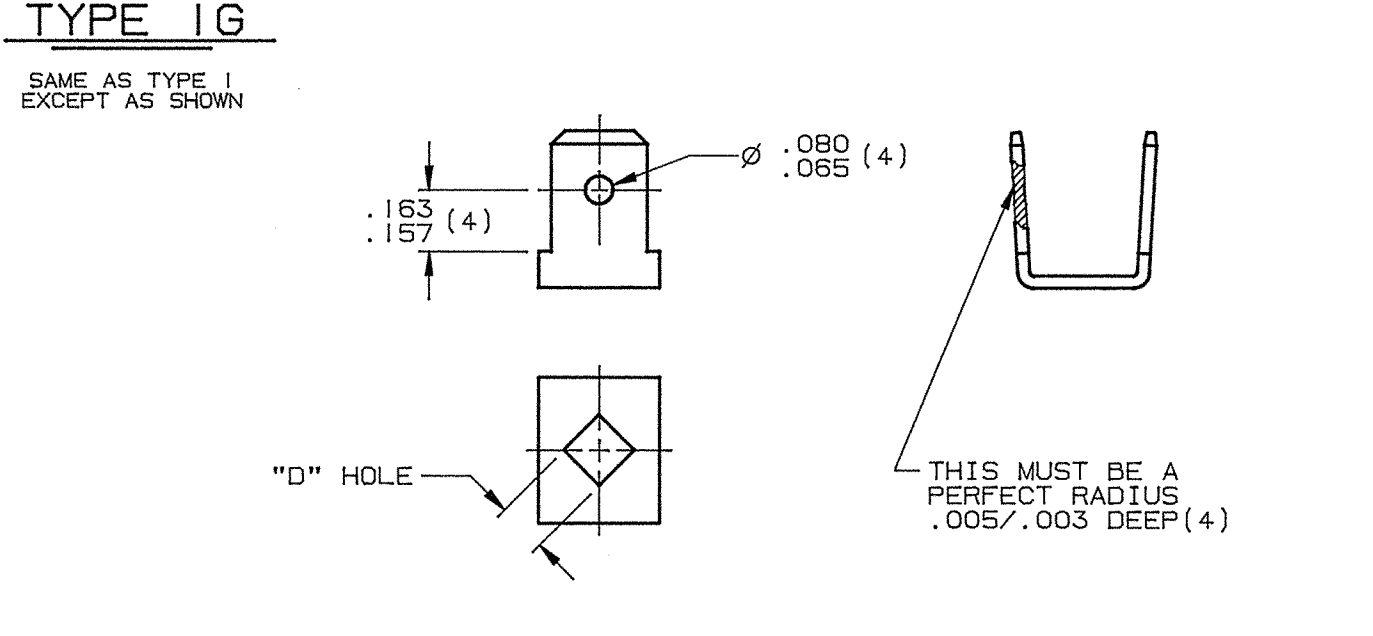
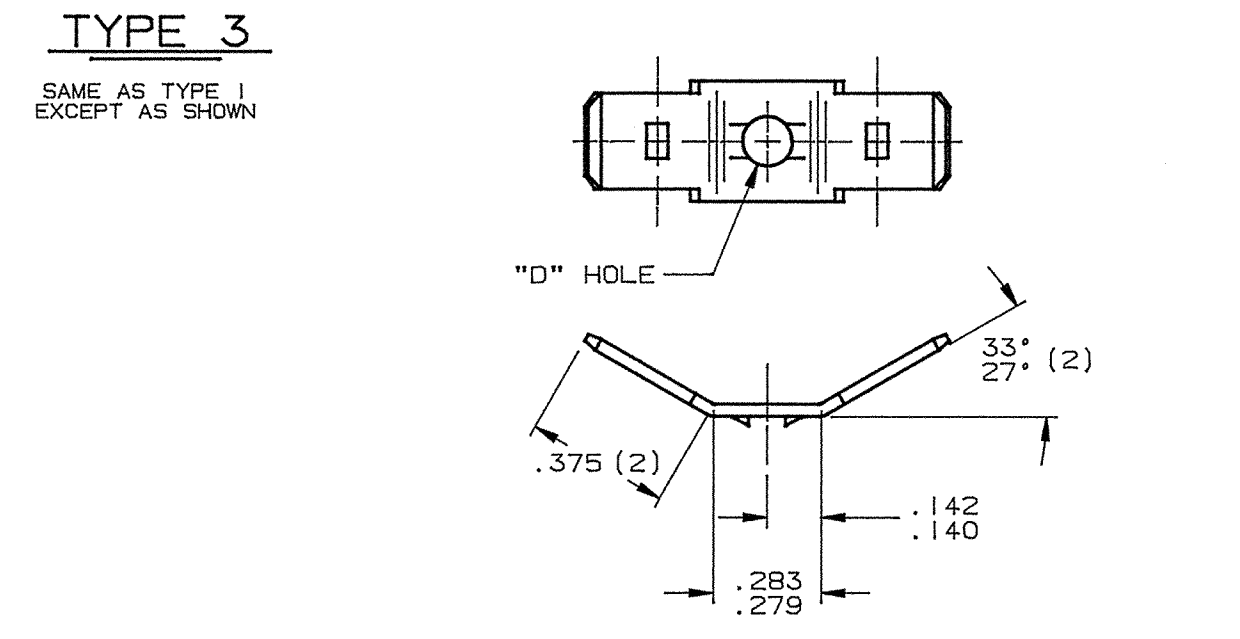
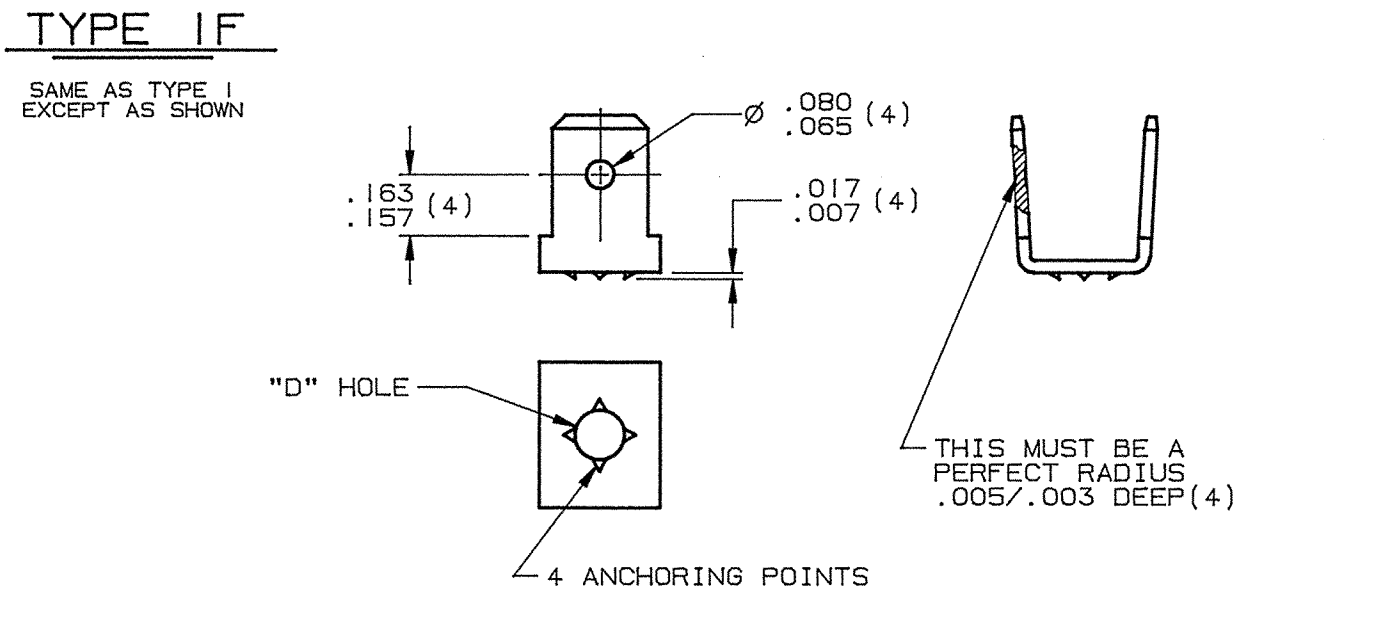
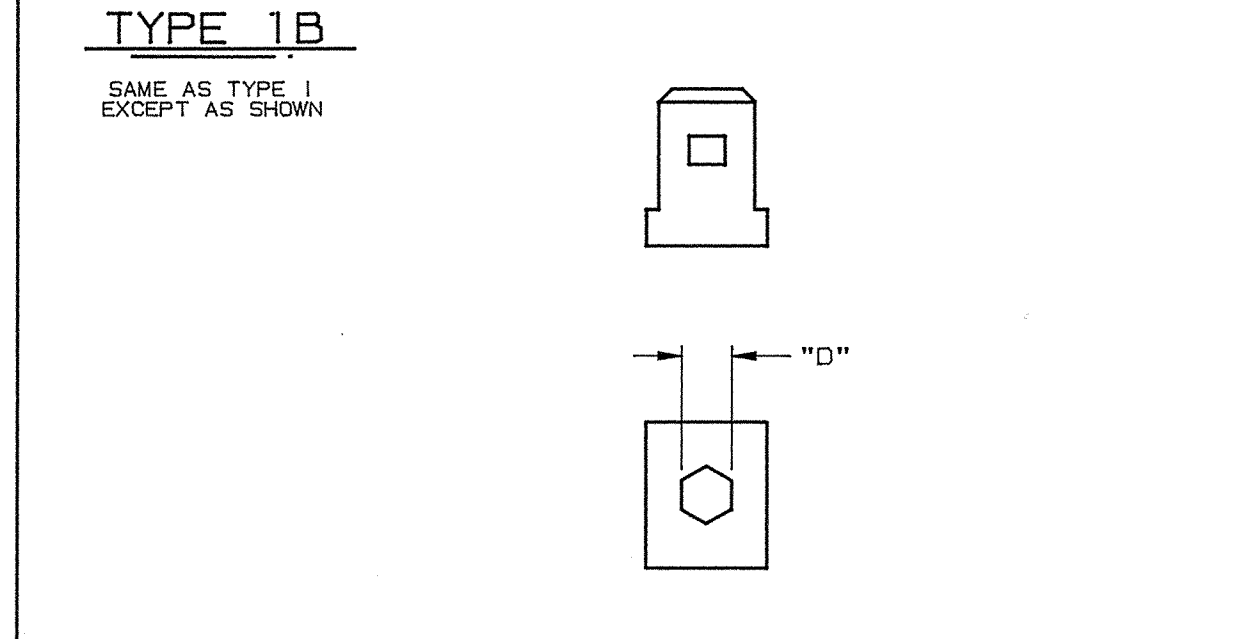
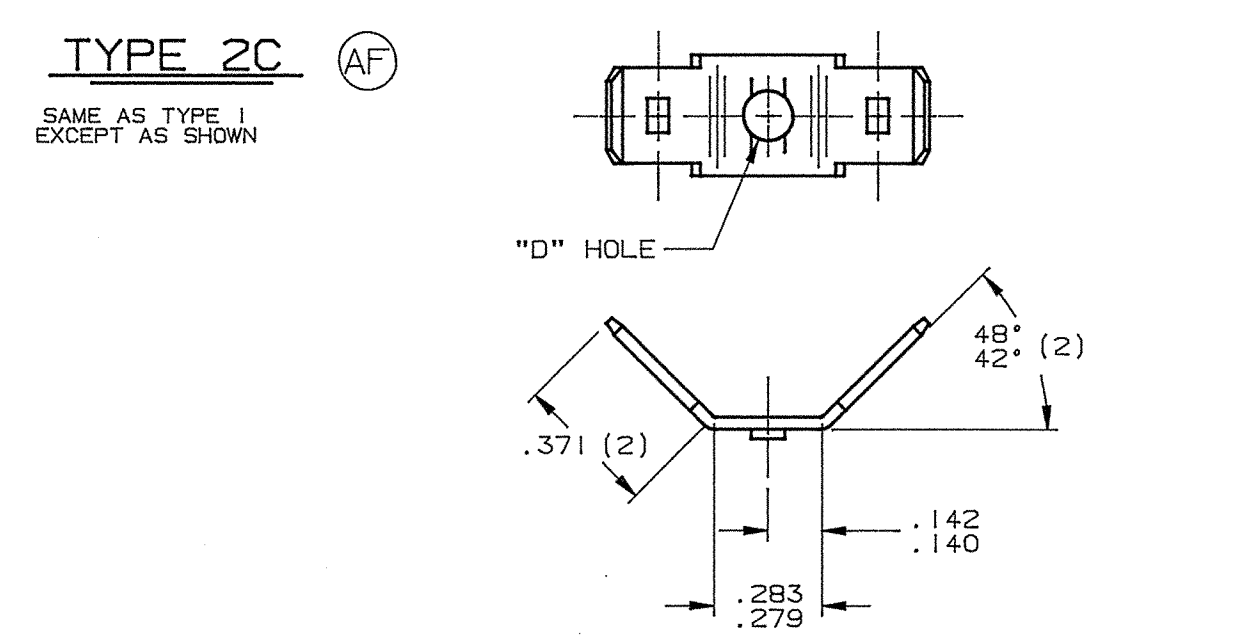
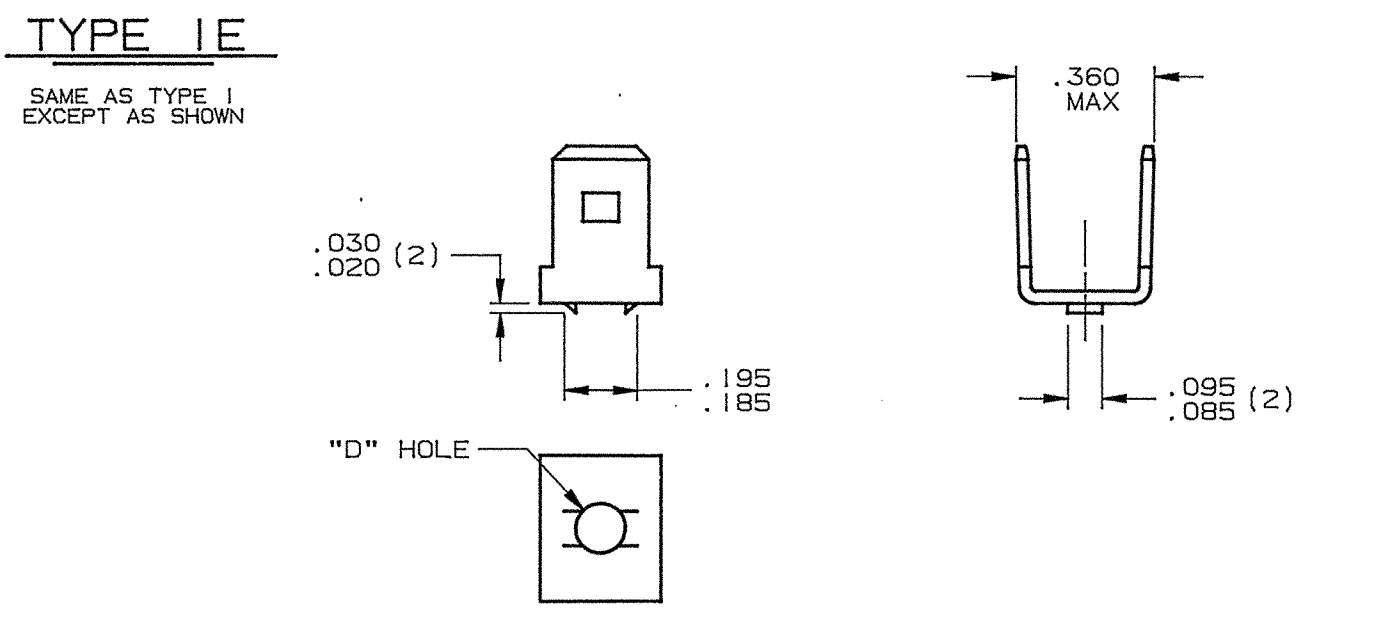
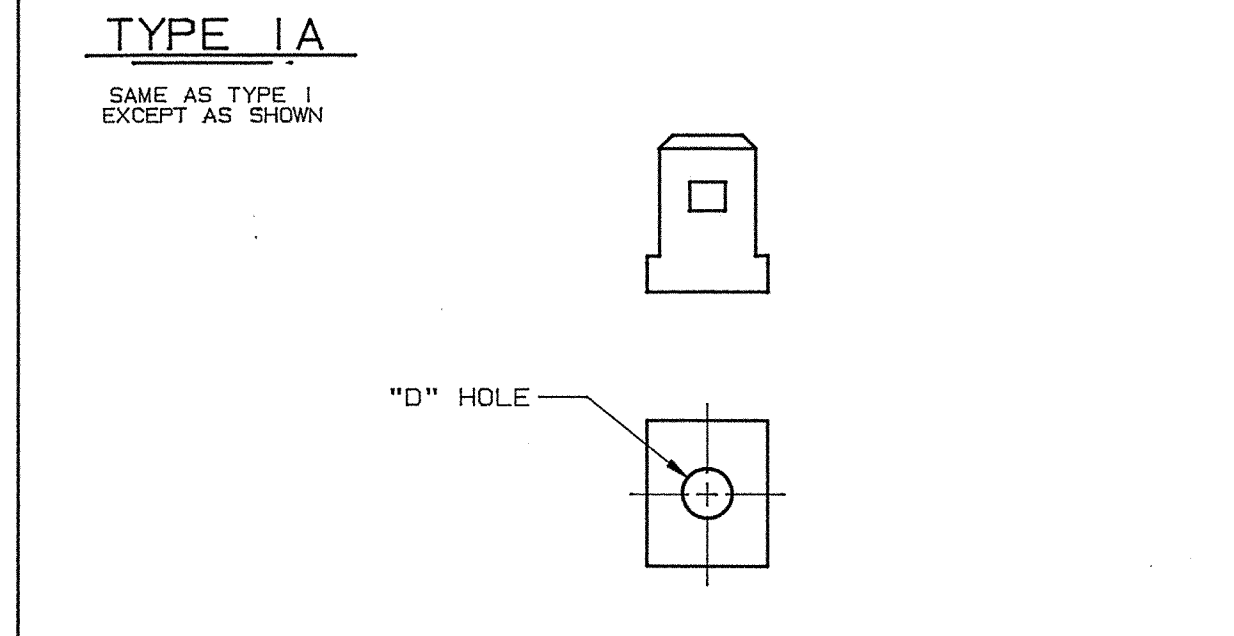
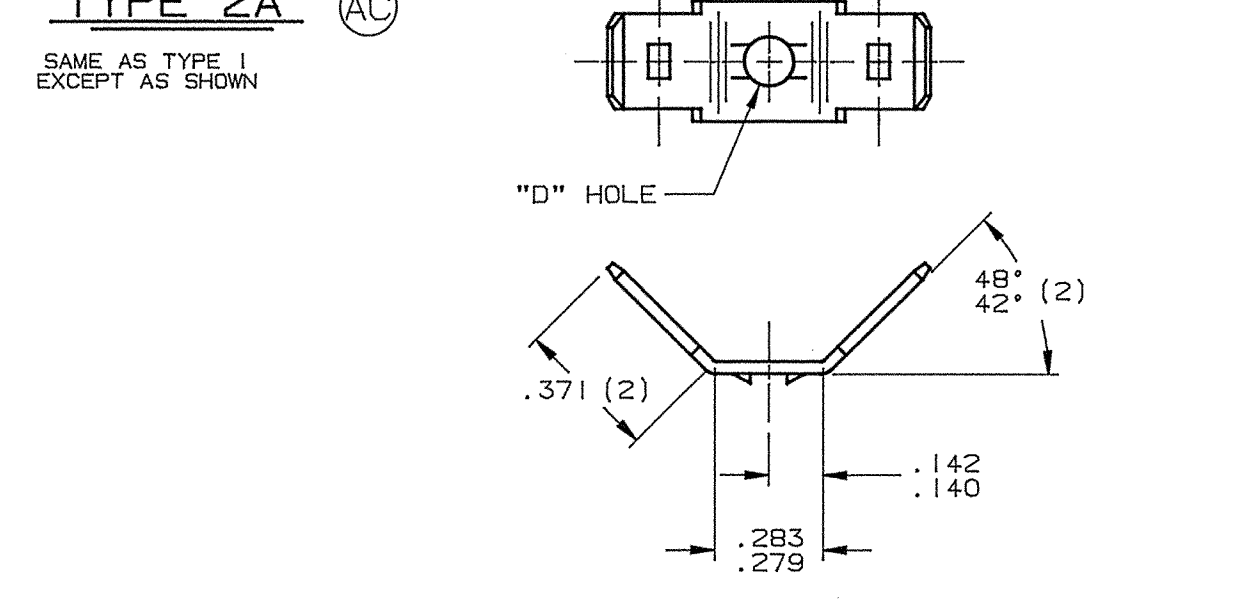
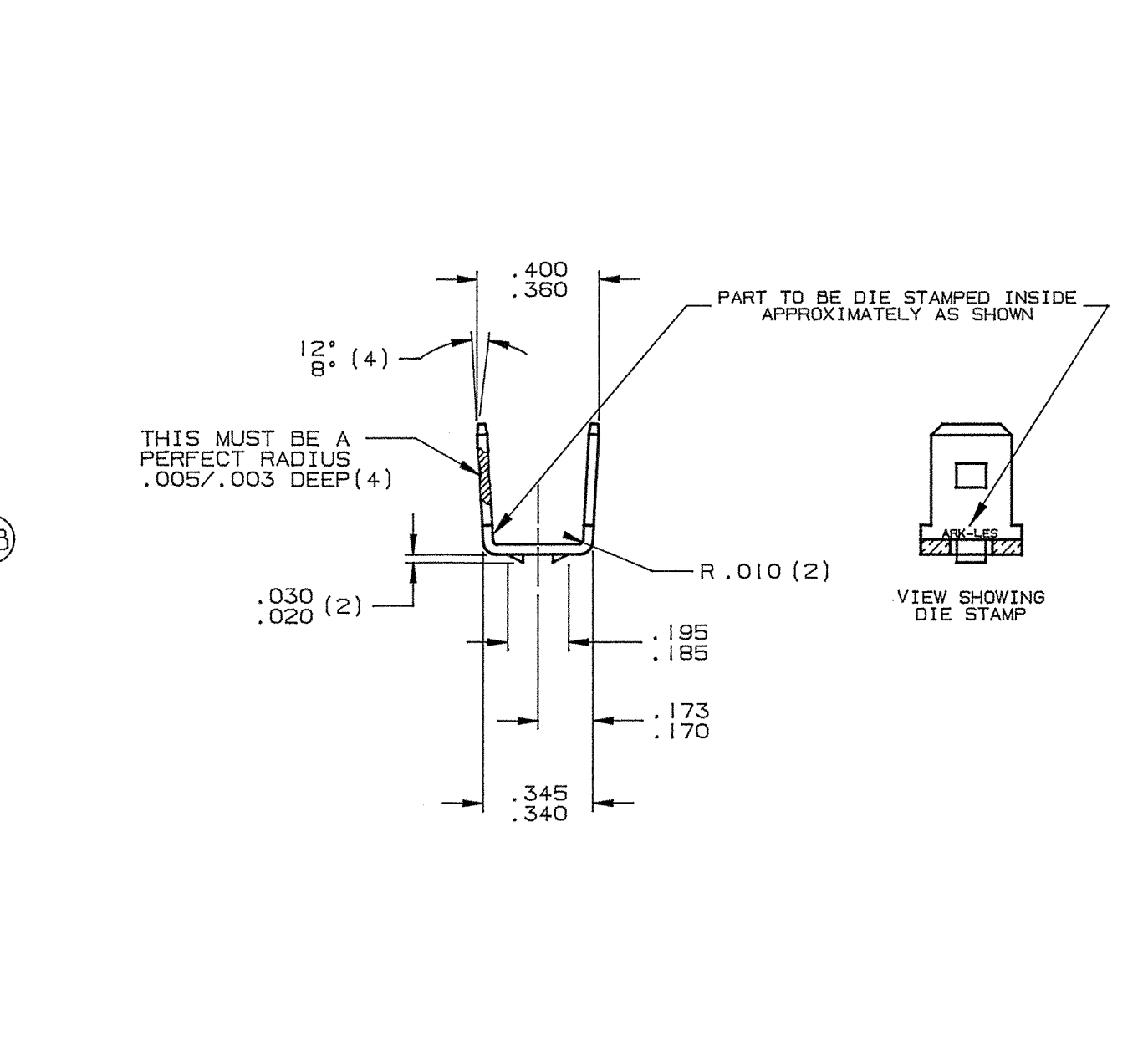
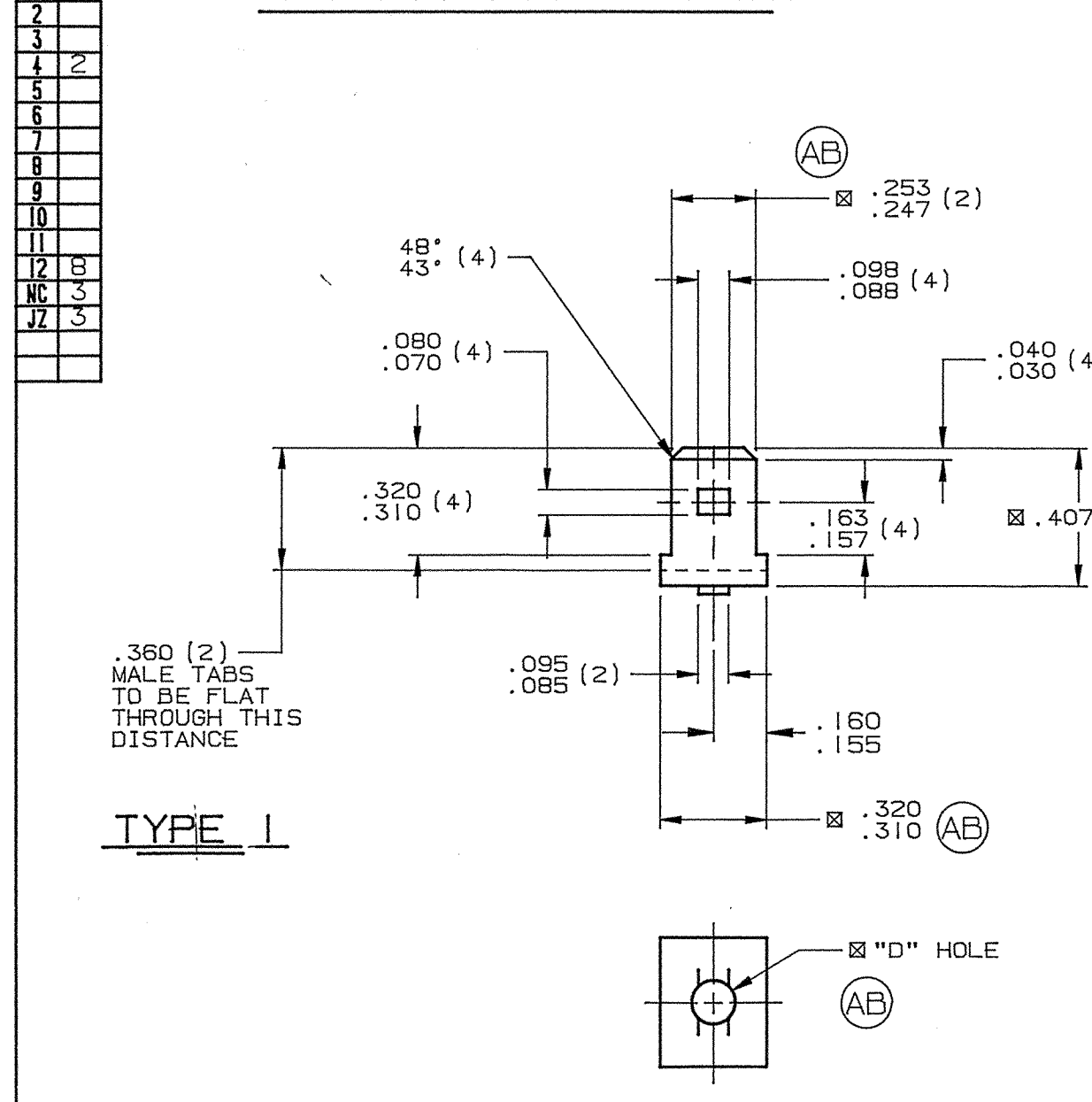


PART NAME: **TERMINAL-MALE 2 WAY**



PART NO: 3000C27/			
PART NUMBER	TYPE	FINISH	"D"
3000C27-1A	1A	NONE	.132/.128
3000C27-1A3	1	NONE	.132/.128
3000C27-1A4	1A	ELECTRO-TIN PCS 1002	.158/.154
3000C27-1A6	2	ELECTRO-TIN PCS 1002	.158/.154
3000C27-1A7	2	NONE	.192/.185
3000C27-1A8	2	ELECTRO-TIN PCS 1002	.192/.185
3000C27-1A9	1A	NONE	.161/.151
3000C27-1A10	2	NONE	.166/.156
3000C27-1A11	1A	BRIGHT DIP	.132/.128
3000C27-1A10	2	SEE NOTE 5	.166/.156
3000C27-1AY	1	ZINC PLATE PCS 1009	.132/.128
3000C27-1B	1B	NONE	.132/.128 HEX
3000C27-1B5	1A	NONE	.158/.154
3000C27-1E	1A	ELECTRO-TIN PCS 1002	.132/.128
3000C27-1H	1	ELECTRO-TIN PCS 1002	.132/.128
3000C27-1L	1A	SILVER PLATE PCS 1006	.132/.128
3000C27-1M	1D	NONE	.132/.128
3000C27-1N	4	NONE	.132/.128
3000C27-1N1	4A	ELECTRO-TIN PCS 1002	.132/.128
3000C27-1N2	4A	NONE	.132/.128
3000C27-1N3	4A	ELECTRO-TIN PCS 1002	.205/.200
3000C27-1N3-1	4A	NONE	.205/.200
3000C27-1N3-2	4A	ELECTRO-TIN PCS 1002	.158/.154
3000C27-1N3-3	4A	NONE	.158/.154
3000C27-1P	1	SILVER PLATE PCS 1006	.132/.128
3000C27-1Q	1C	NONE	.132/.128
3000C27-1S	4A	NONE	.205/.200
3000C27-1S1	4A	ELECTRO-TIN PCS 1002	.205/.200
3000C27-2A	3	ELECTRO-TIN PCS 1002	.132/.128
3000C27-2B	3	NONE	.132/.128
3000C27-2C	3A	ELECTRO-TIN PCS 1002	.158/.154
3000C27-2D	3A	NONE	.158/.154
3000C27-2E	1E	NONE	.132/.128
3000C27-2F	1E	ELECTRO-TIN PCS 1002	.132/.128
3000C27-2G	1F	NONE	.132/.128
3000C27-2H	1F	ELECTRO-TIN PCS 1002	.132/.128
3000C27-2J	1G	NONE	.132/.128
3000C27-2K	1G	ELECTRO-TIN PCS 1002	.132/.128
3000C27-2L	2A	NONE	.166/.156
3000C27-2M	2C	NONE	.132/.128
3000C27-2N	2B	NONE	.166/.156

- NOTES:
 1. TO MATE WITH .250 x .032 FEMALE QUICK-CONNECT.
 2. ALL PORTIONS OF TABS SHOWN SHALL BE FLAT AND FREE FROM BURRS OR RAISED PLATEAUS, EXCEPT THAT THERE MAY BE, IN AN AREA .050 INCH SURROUNDING THE DETENT, A RAISED PLATEAU OVER THE STOCK THICKNESS OF .001 INCH PER SIDE.
 3. DETENTS SHALL BE LOCATED WITHIN .003 OF THE CENTERLINE OF THE MALE TABS.
 4. MALE TABS MUST CONFORM TO UL 310.
 5. PARTS TO BE TUMBLED TO ACHIEVE MATTE FINISH.
 6. ALL CORNERS SHOWN SHARP MAY HAVE A .010 MAXIMUM RADIUS.
 7. ⌀ = PRE-CONTROL DIMENSIONS.

ARK-LES UNCONTROLLED

REV.	DESCRIPTION	DATE	DR.	SCALE: 2=1	CAD NO: DTM0001	PROD. REL. ECR 6157 4/3/87 RT	QUOTE REL.	TOLERANCES UNLESS OTHERWISE SPECIFIED: DECIMALS ±.010 METRIC ±0.25mm ANGLES ±1°
AF	REVISED PER ECR #11808	6/30/99	RT					
AE	3000C27-2N ADDED PER ECR #11783	5/25/99	RT					
AD	3000C27-2M ADDED PER ECR #11771	5/12/99	RT					
AC	3000C27-2L ADDED PER ECR #11758	4/29/99	RT					
AB	REVISED & REDRAWN PER ECR #11609	10/22/98	RT					

MATERIAL: .032±.001 THICK BRASS
 .28000 1/2 HARD
 TENSILE: 57,000-67,000 PSI
 FINISH: SEE TABLE
 PART NO: 3000C27/