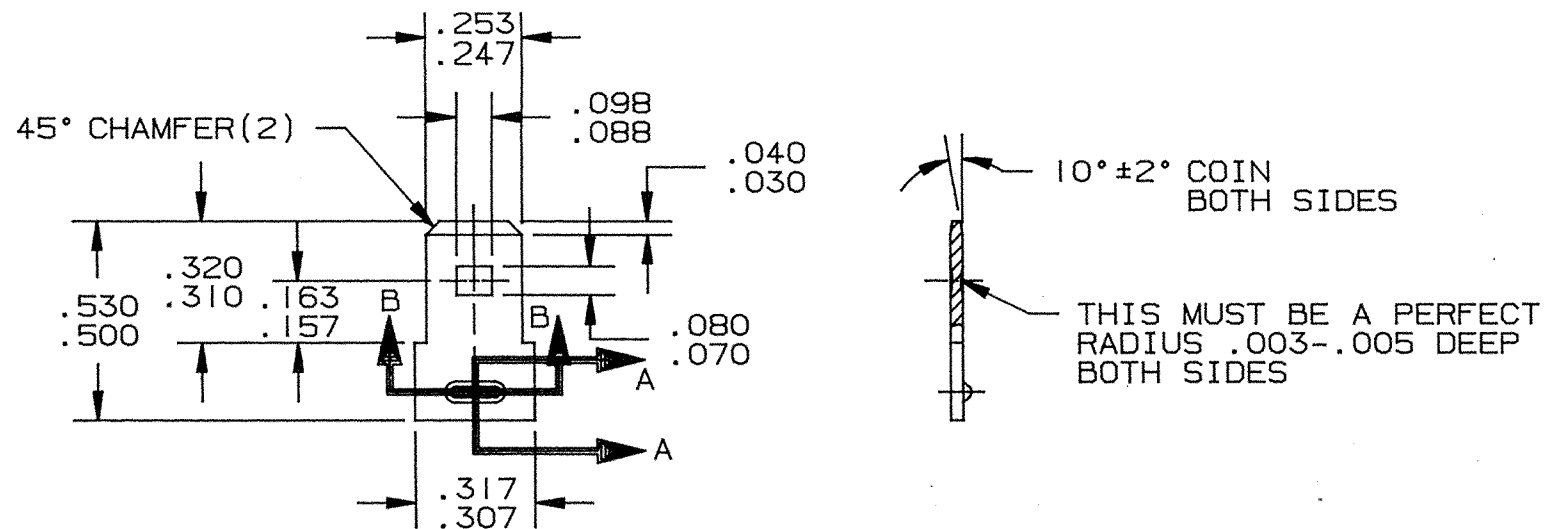


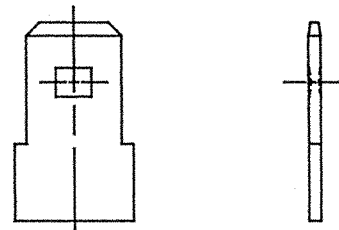
PART NAME: TERMINAL, MALE

PART NO: 3000M23A/

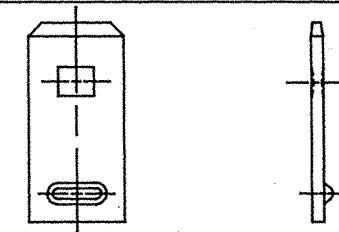
DEPT	
1	I
2	
3	
4	I
5	
6	
7	
8	
9	
10	
11	
12	6
NC	
JZ	



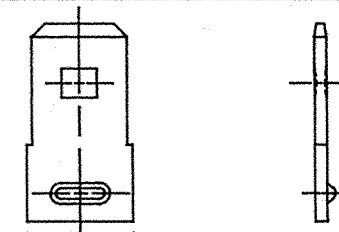
TYPE 1



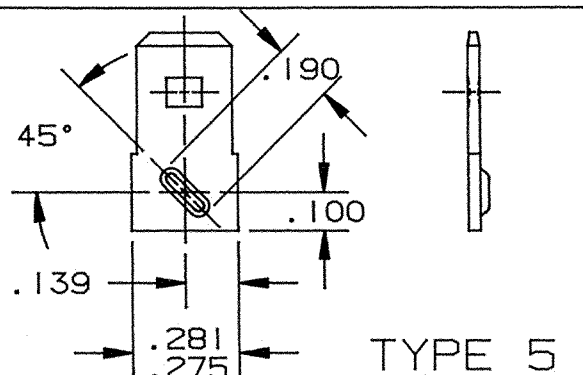
TYPE 2



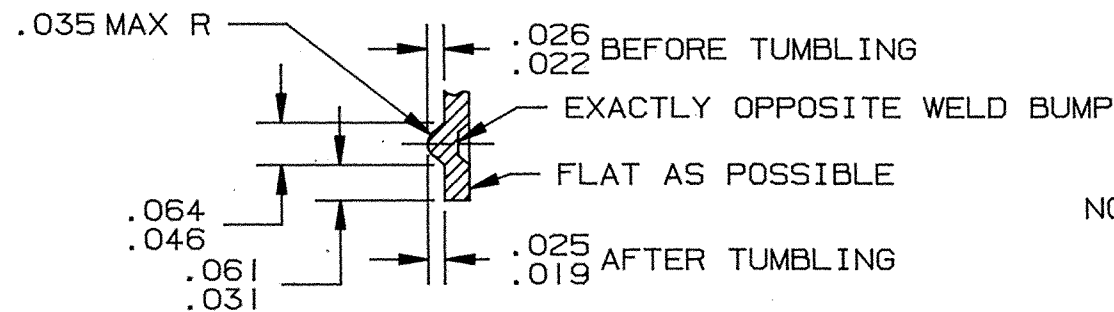
TYPE 3



TYPE 4

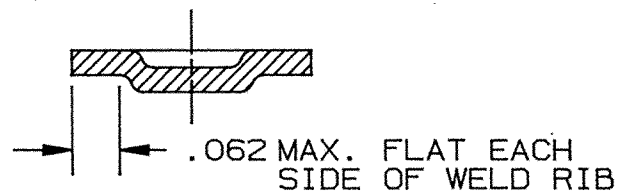


TYPE 5



SECTION A-A

SCALE: 4X



SECTION B-B

SCALE: 4X

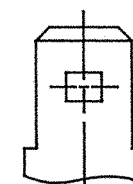
PART NUMBER	TYPE	MALE TAB	FINISH
3000M23A1	1	A	NICKEL PLATE PCS 1000
3000M23A14	2	A	NICKEL PLATE PCS 1000
3000M23A16	4	A	NICKEL PLATE PCS 1000
3000M23A17	3	B	NICKEL PLATE PCS 1000
3000M23A18	1	A	NONE
3000M23A19	3	B	NONE
3000M23A20	1	C	NICKEL PLATE PCS 1000
3000M23A20-1	1	C	NONE
3000M23A21	5	A	NICKEL PLATE PCS 1000
3000M23A21-1	5	A	NONE

(AE)

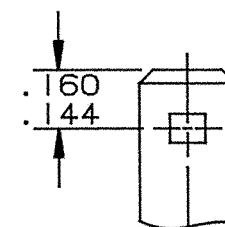
(AF)

NOTES:

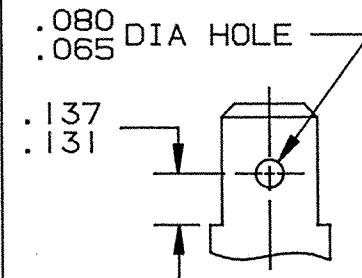
- ALL PORTIONS OF THE TAB SHOWN SHALL BE FLAT & FREE FROM BURRS OR RAISED PLATEAUS, EXCEPT THAT THERE MAY BE, IN AN AREA OF .050 INCH SURROUNDING THE DETENT (OR HOLE), A RAISED PLATEAU OVER THE STOCK THICKNESS OF .001 INCH PER SIDE.
- DETENT SHALL BE LOCATED WITHIN .005 INCH OF THE CENTERLINE OF THE TAB.
- HOLE SHALL BE LOCATED WITHIN .003 OF THE CENTERLINE OF THE TAB.



MALE TAB "A"



MALE TAB "B"



MALE TAB "C"

PROD. REL.	3-13-52	S.F.D.	TOLERANCES UNLESS OTHERWISE SPECIFIED:
QUOTE REL.			DECIMALS ±.010 METRIC ±0.25mm ANGLES ±1°
DR: M. BUMILA	3-23-93		MATERIAL: .032 ±.001 TH'K C.R. STEEL #3 TEMPER, R30T 56.5-68.0
CHK'D: R.W.T.	4-7-93		FINISH: SEE TABLE
APP: Bishop	4-29-93		PART NO: 3000M23A/
PER ECR #9547			
REV.	DESCRIPTION	DATE	DR.
			SCALE: 2X CAD NO: BTP0012

ORIGINAL