

DEPT	1
1	1
2	1
3	1
4	2
5	1
6	1
7	1
8	1
9	1
10	1
11	1
12	B
13	1
14	1
15	3

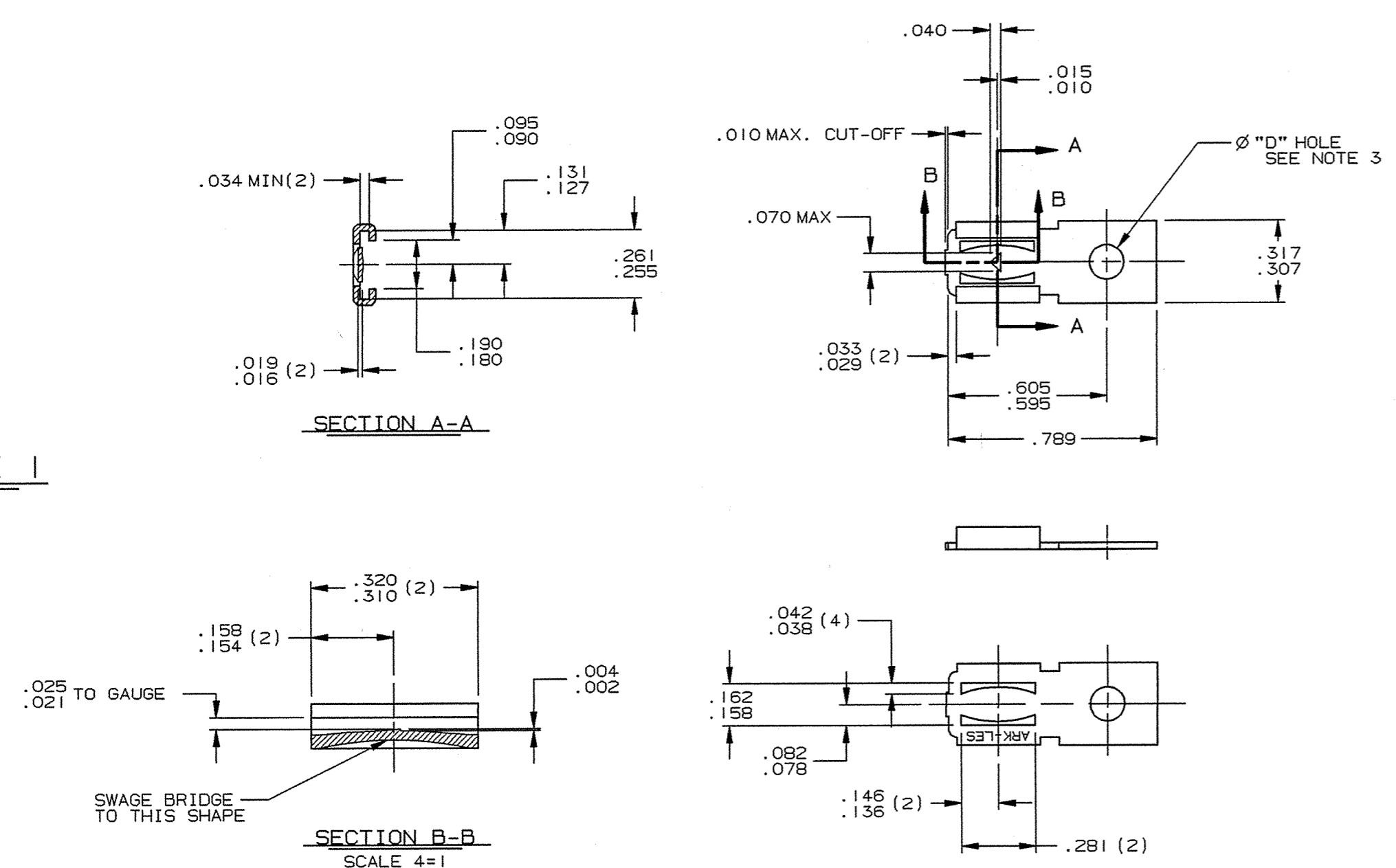
PART NAME: TERMINAL, FEMALE

Ⓜ STAMPING DIE #491

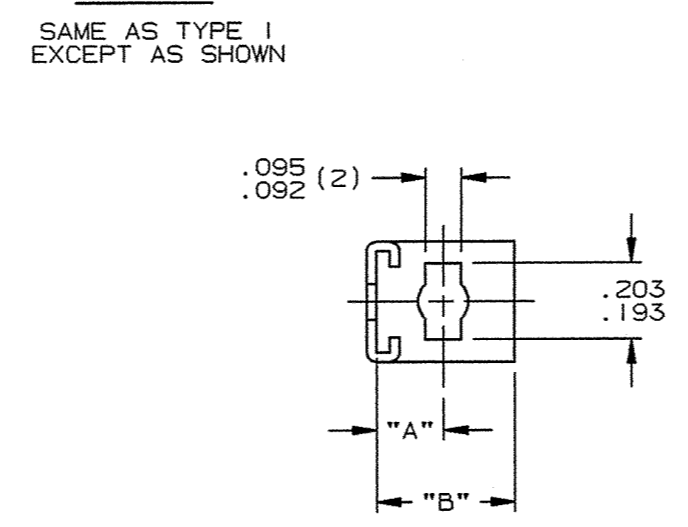
PART NO: 3000H 6/H6A/

PART NUMBER	TYPE	"A" ±.005	"B" ±.005	"D" HOLE DIAMETER	FINISH	MAKE FROM
3000H 6	3	.174	.359	.132/.128	NONE	---
3000H 6-1J	3	.174	.359	.173/.169	NONE	---
3000H 6-2	8	---	---	.132/.128	NONE	---
3000H 6-3	9	---	---	.132/.128	NONE	---
3000H 6-3A	9	---	---	.132/.128	ELECTRO-TIN PCS 1002	3000H 6-3
3000H 6-3B	9	---	---	.132/.128	NICKEL PLATE PCS 1000	3000H 6-3
3000H 6-4	2	.174	.359	.132/.128	NONE	---
3000H 6-4A	2	.174	.359	.132/.128	ELECTRO-TIN PCS 1002	3000H 6-4
3000H 6-6	3	.174	.314	.132/.128	NONE	---
3000H 6-6A	3	.174	.314	.132/.128	ELECTRO-TIN PCS 1002	3000H 6-6
3000H 6-7	4	.174	.359	.132/.128	ELECTRO-TIN PCS 1002	3000H 6-7B
3000H 6-7B	4	.174	.359	.132/.128	NONE	---
3000H 6-7C	4	.174	.359	.132/.128	NICKEL PLATE PCS 1000	3000H 6-7B
3000H 6-9	5	---	.314	NONE	NONE	---
3000H 6-24	3	.174	.359	.132/.128	ELECTRO-TIN PCS 1002	3000H 6
3000H 6-26	8	---	---	.132/.128	ELECTRO-TIN PCS 1002	3000H 6-2
3000H 6-28	7	.174	.359	.132/.128	ELECTRO-TIN PCS 1002	3000H 6-28A
3000H 6-28A	7	.174	.359	.132/.128	NONE	---
3000H 6-30	1	---	---	.132/.128	ELECTRO-TIN PCS 1002	3000H 6A
3000H 6-31	3	.174	.359	.132/.128	ELECTRO-TIN OVER COPPER PCS 1004	3000H 6
3000H 6-32	1	---	---	.132/.128	NICKEL PLATE PCS 1000	3000H 6A
3000H 6-33	11	.174	.359	.132/.128	NONE	---
3000H 6-33A	11	.174	.359	.132/.128	ELECTRO-TIN PCS 1002	3000H 6-33
3000H 6-33N	11	.174	.359	.132/.128	NICKEL PLATE PCS 1000	3000H 6-33
3000H 6A	1	---	---	.132/.128	NONE	---
3000H 6A-4	1	---	---	.200/.196	NONE	---
3000H 6A-4A	6	.174	.359	.200/.196	NONE	---
3000H 6A-4A-1	6	.174	.359	.200/.196	CADMIUM PLATE PCS 1013	3000H 6A-4A
3000H 6A-4A2	6	.174	.359	.200/.196	NICKEL PLATE PCS 1000	3000H 6A-4A
3000H 6A-4T	10	---	---	.200/.196	ELECTRO-TIN PCS 1002	3000H 6A-4

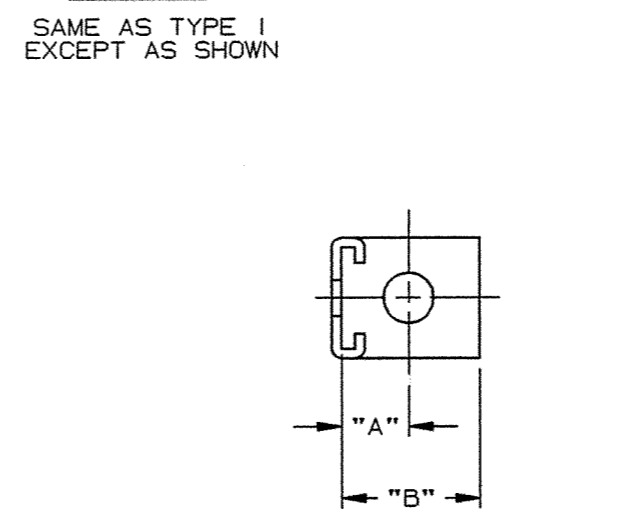
TYPE 1



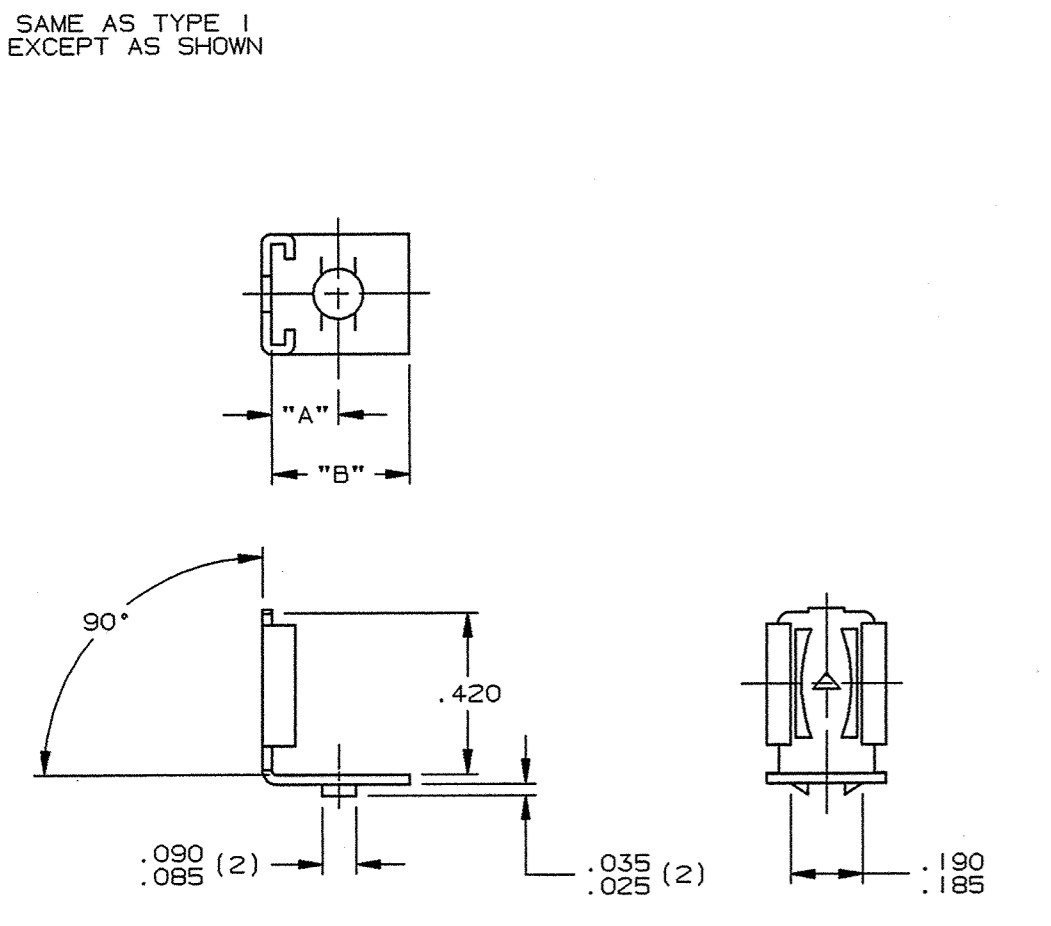
TYPE 2



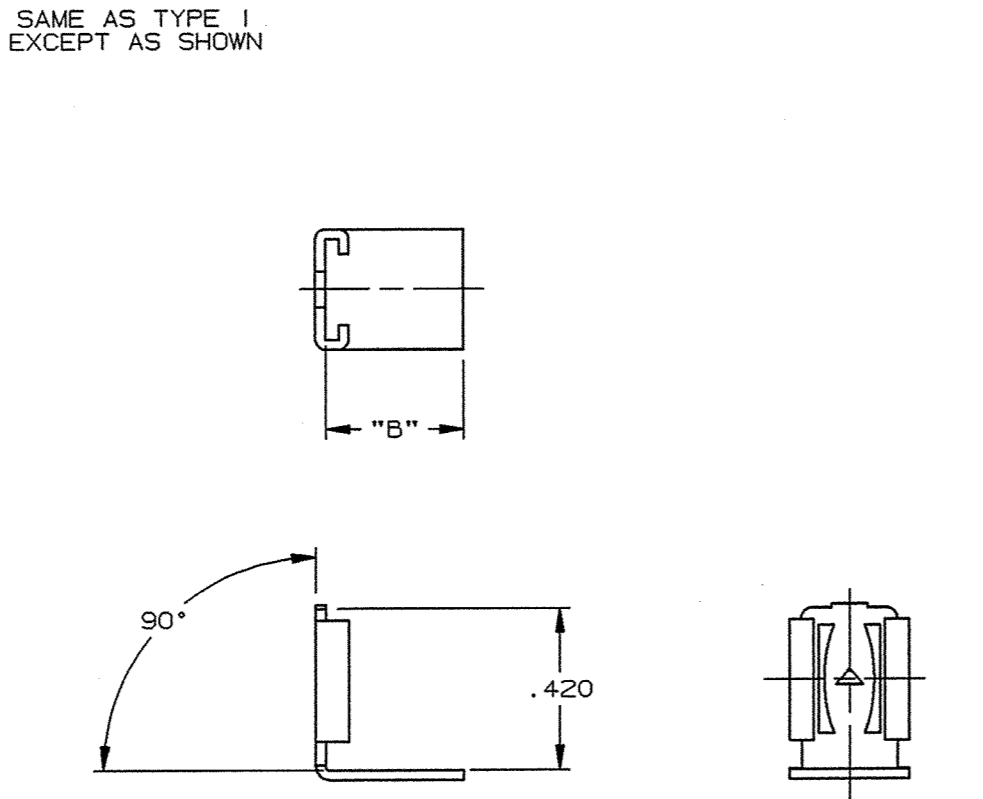
TYPE 3



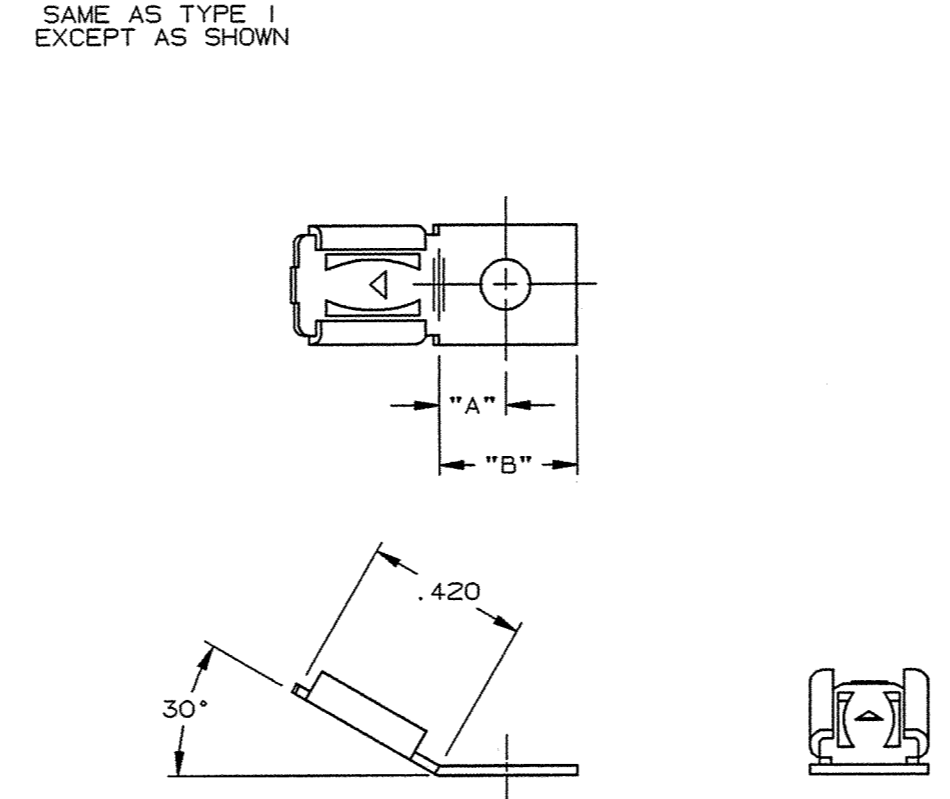
TYPE 4



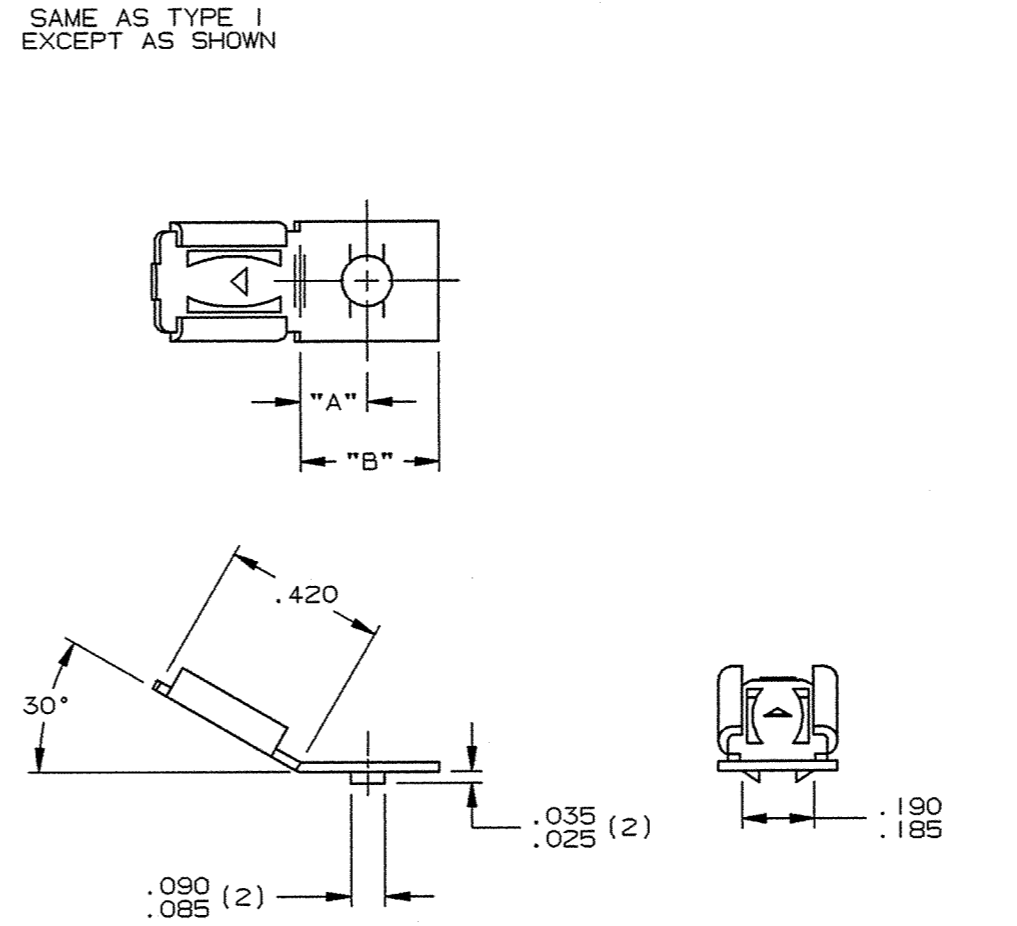
TYPE 5



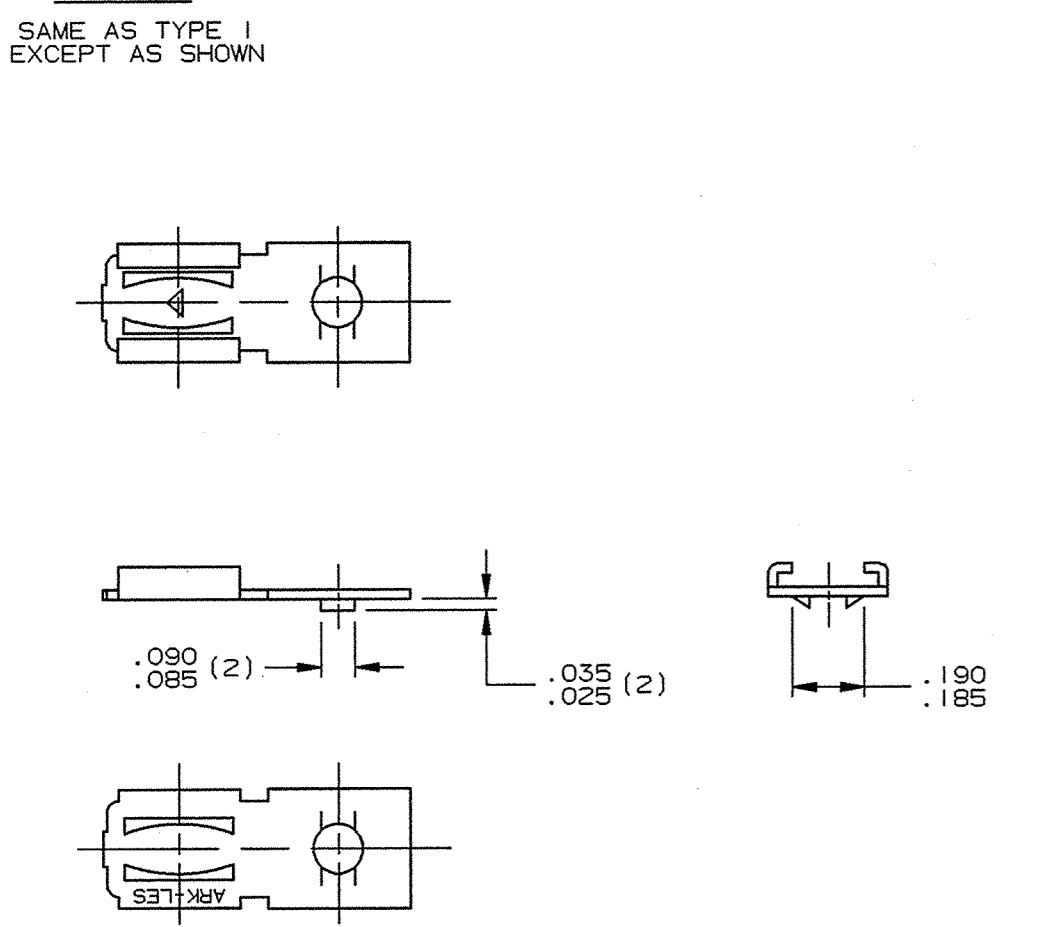
TYPE 6



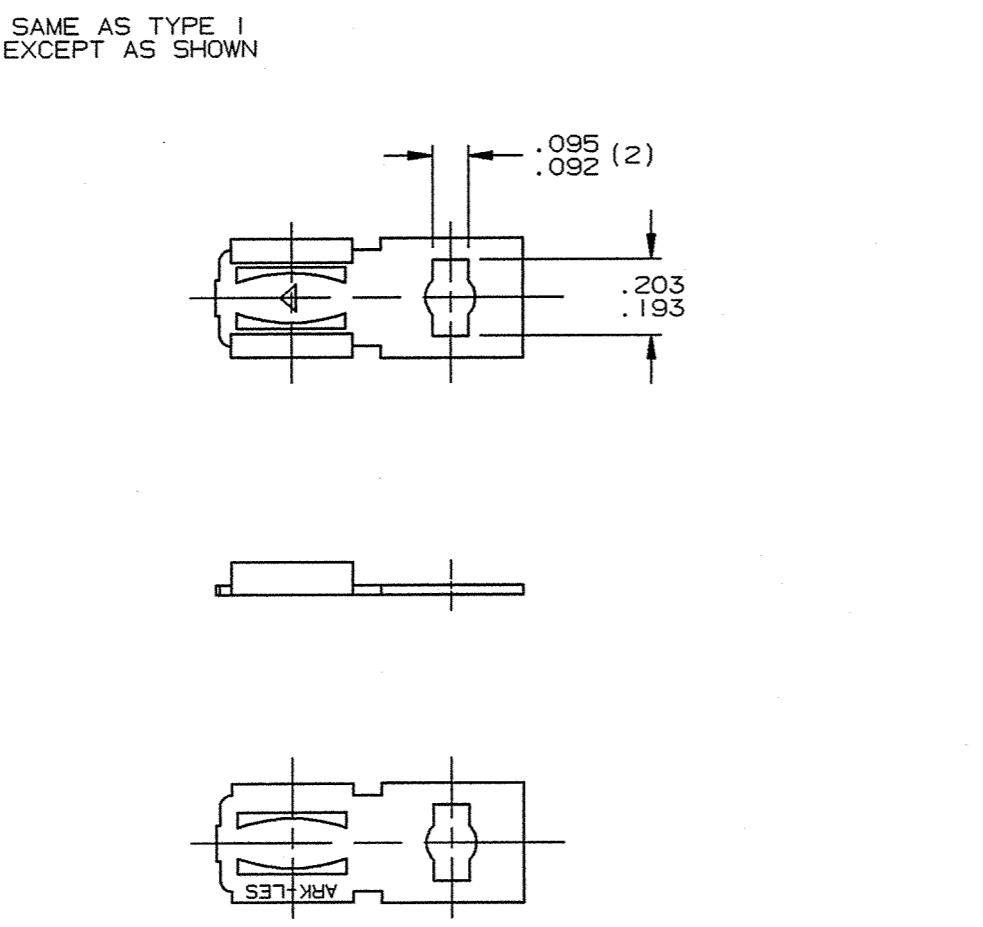
TYPE 7



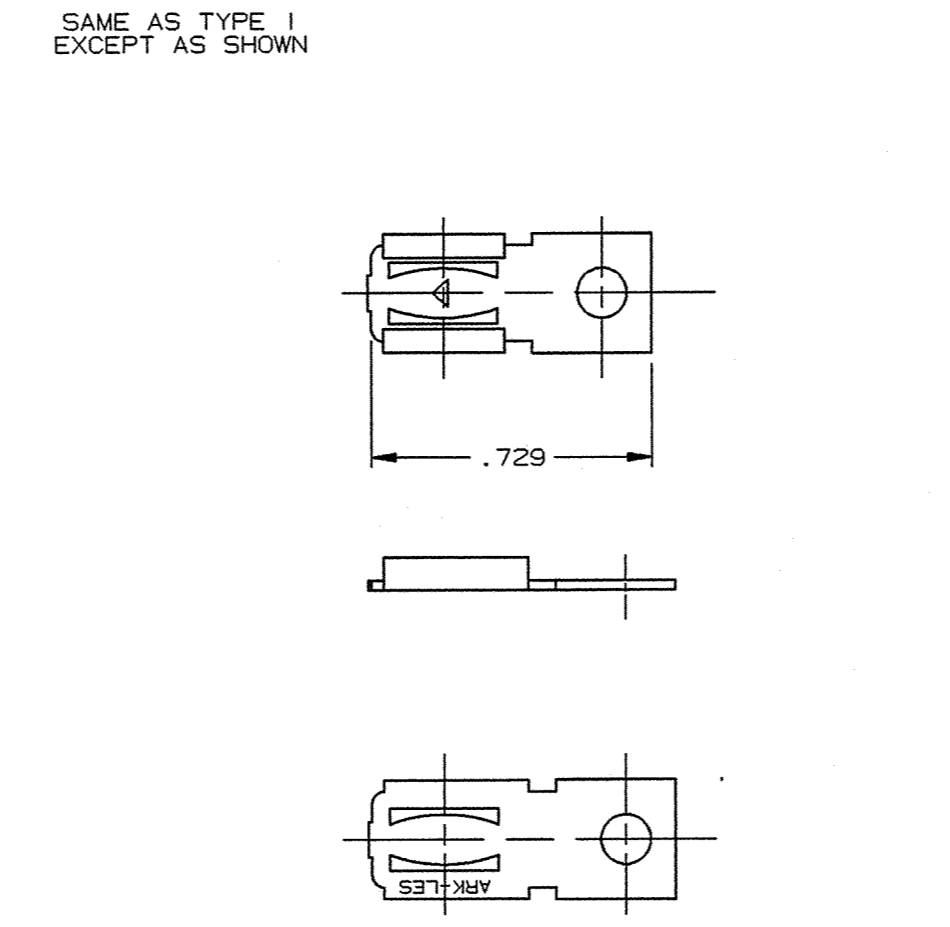
TYPE 8



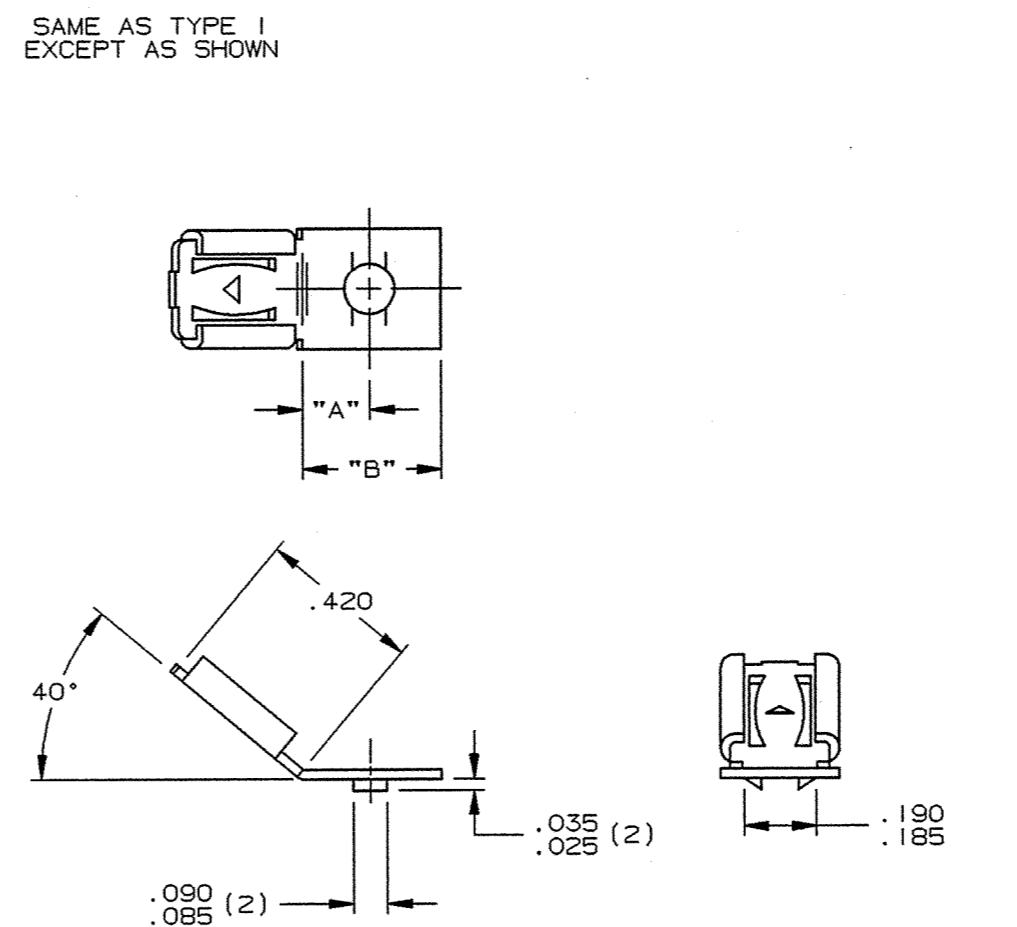
TYPE 9



TYPE 10



TYPE 11



Ⓜ
Ⓜ

- NOTES:
 1. TO ACCEPT A .250 X .032 MALE TAB.
 2. "ARK-LES" TO BE DIE STAMPED APPROXIMATELY AS SHOWN.
 3. "D" HOLE CENTERLINE LOCATION MUST BE HELD TO WITHIN .010 T.I.R. OF .317/.307 DIMENSION.
 4. INSERTION/WITHDRAWAL FORCES TO COMPLY WITH UL 310.
 5. ALL CORNERS SHOWN SHARP MAY HAVE A .010 MAX. RADIUS.

ARK-LES UNCONTROLLED

SHEET 1 OF 2

REV.	DESCRIPTION	DATE	DR.	SCALE: 2=1	CAD NO: DT00005	TOLERANCES UNLESS OTHERWISE SPECIFIED: DECIMALS ±.010 METRIC ±0.25mm ANGLES ±1°
AJ	REVISED PER ECR #12295	2/7/02	RT	PROD. REL.	10/17/02	RT
AH	REVISED PER ECR #12056	1/14/02	RT	QUOTE REL.		
AF	3000H6-33/ ADDED PER ECR #12037	6/26/00	RT	DR: B J CARUTHERS	7/24/99	MATERIAL: .025±.001 THICK BRASS C28000, 1/2 HARD TENSILE: 57,000-67,000 PSI
AE	REVISED PER ECR #10702	6/19/98	RT	CHK'D: <i>[Signature]</i>	2-7-02	FINISH: SEE TABLE
AD	REVISED & REDRAWN PER ECR #10608	10/24/98	RT	APP: <i>[Signature]</i>	2/7/02	
		7/24/95	BJC	SUPERCEDES DWG. DATED: 11/12/91		
						PART NO: 3000H 6/H6A/

ORIGINAL IF RED

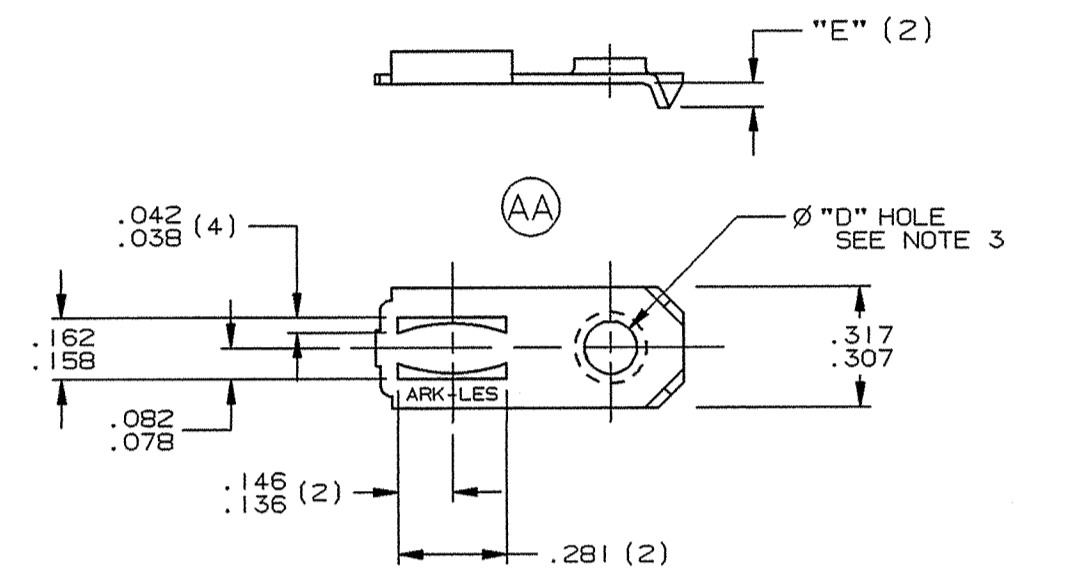
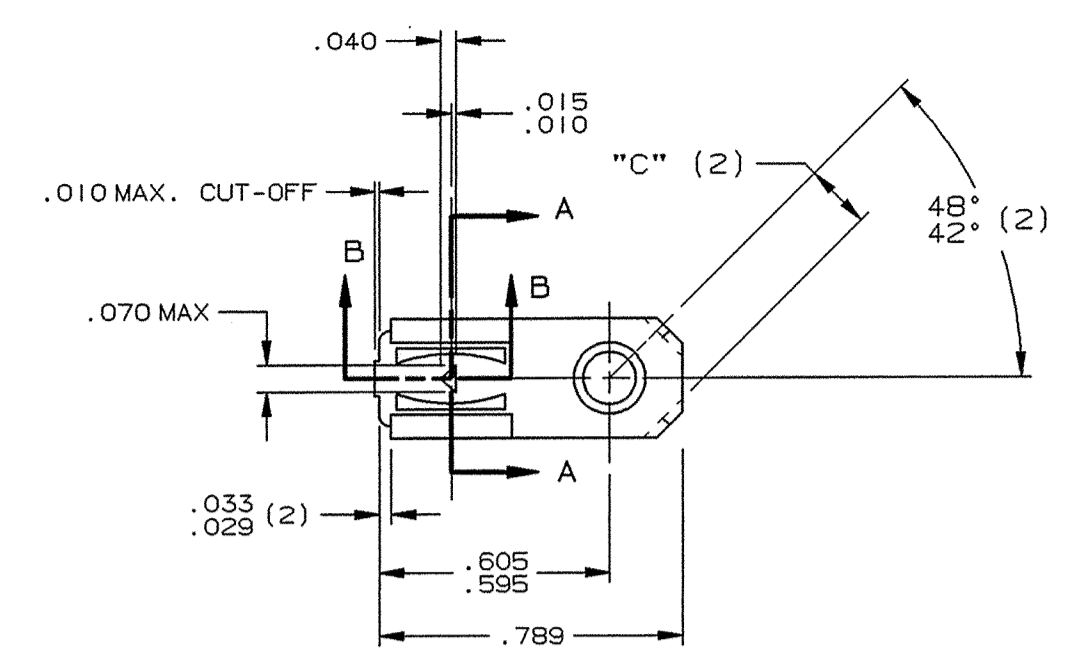
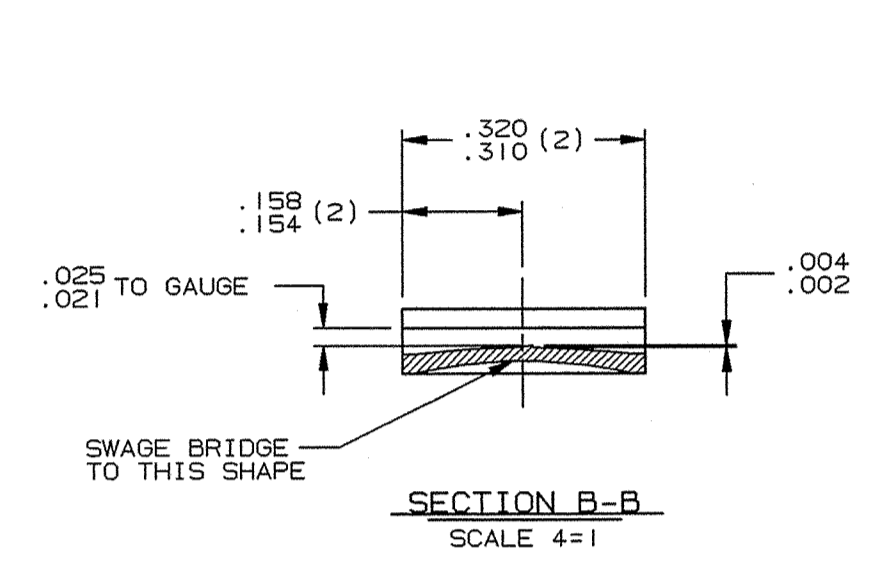
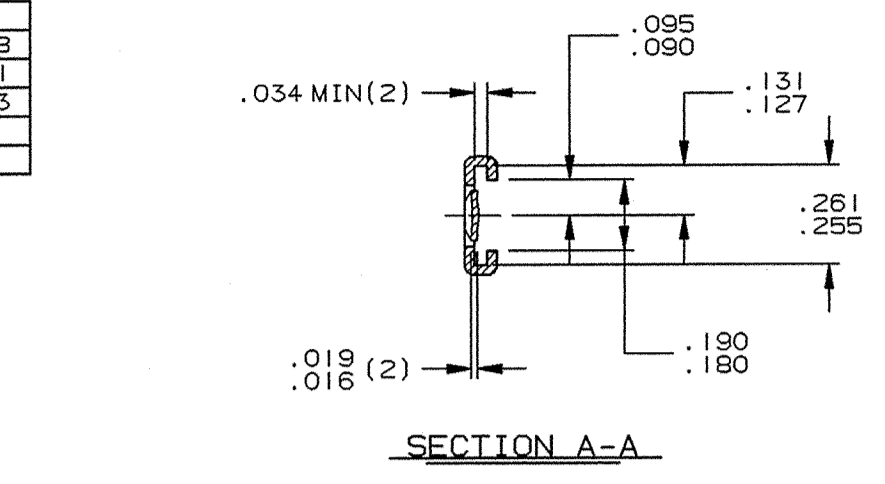
1	1
2	
3	
4	2
5	
6	
7	
8	
9	
10	
11	
12	B
13	I
14	3

PART NAME: TERMINAL, FEMALE

(AH) STAMPING DIE #467

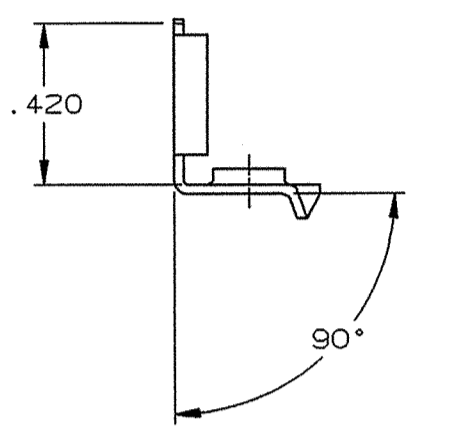
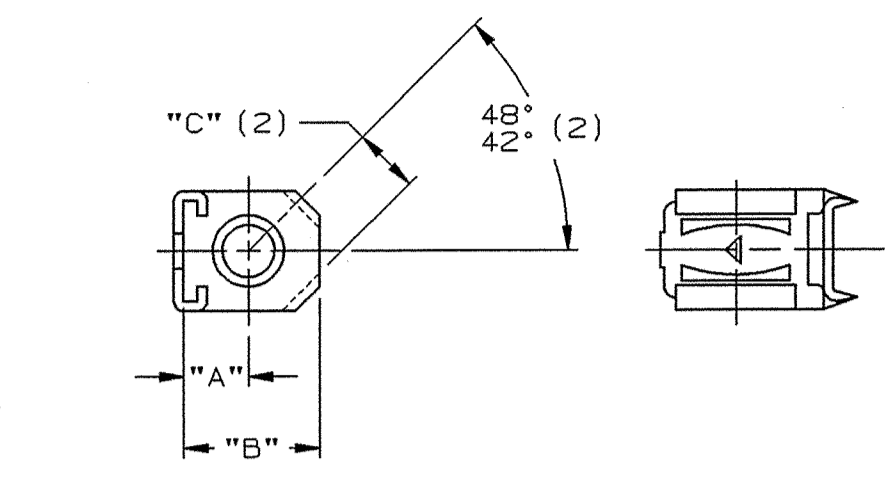
PART NO: 3000H 6/H6A/

TYPE 1



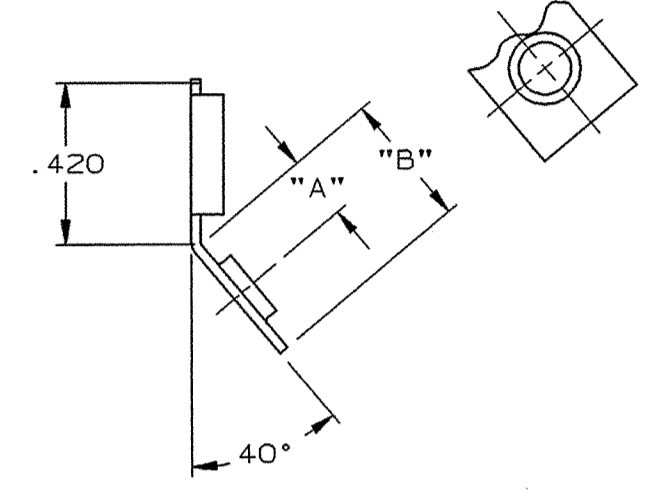
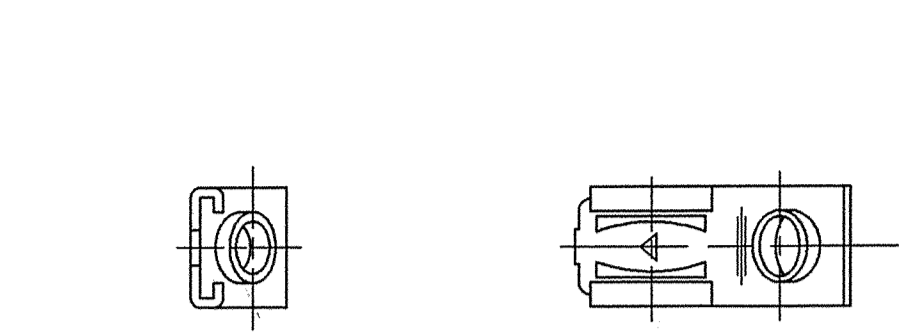
TYPE 2

SAME AS TYPE 1 EXCEPT AS SHOWN



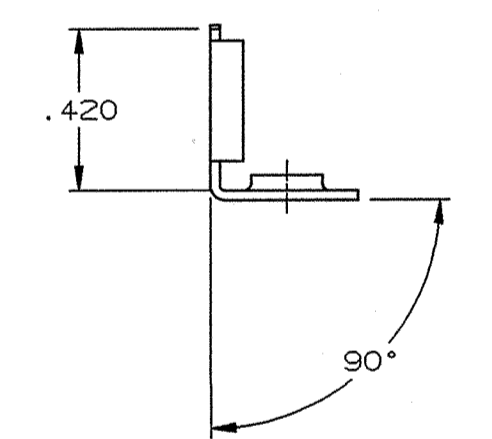
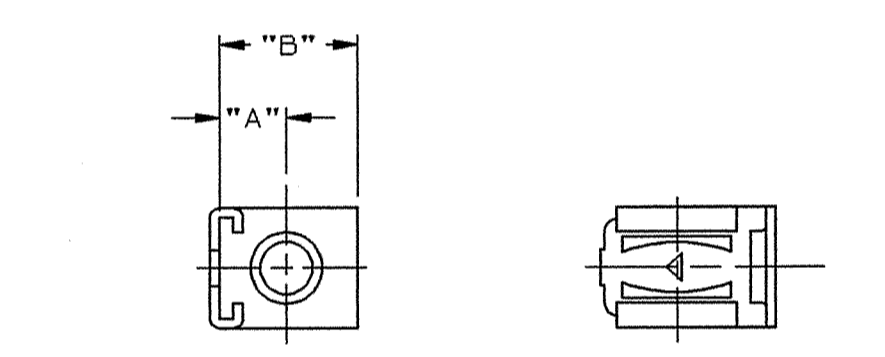
TYPE 3

SAME AS TYPE 1 EXCEPT AS SHOWN



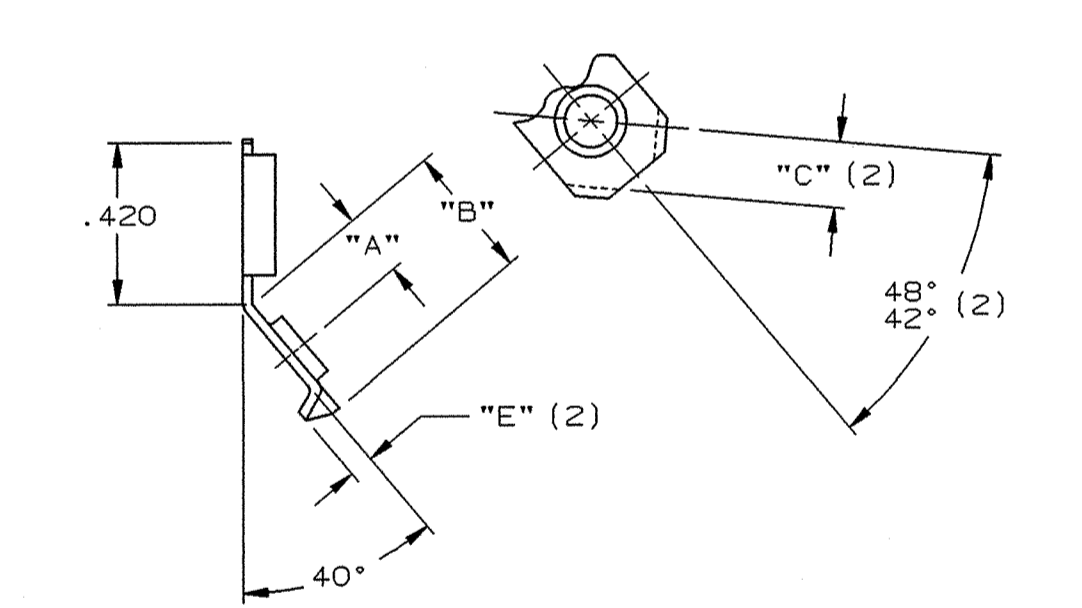
TYPE 4

SAME AS TYPE 1 EXCEPT AS SHOWN



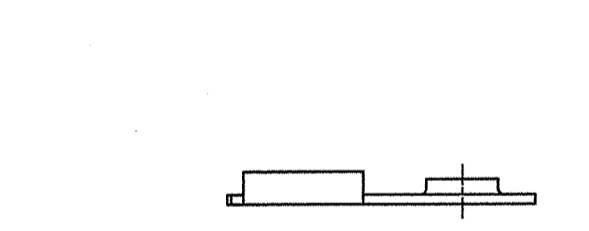
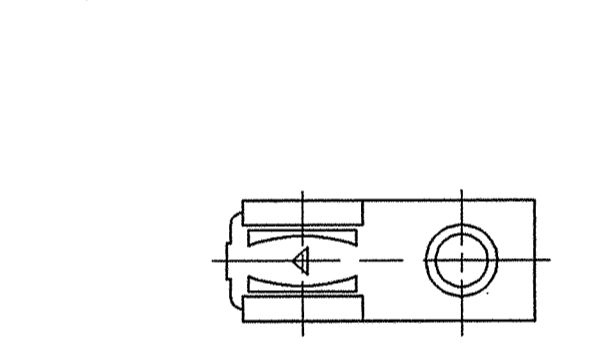
TYPE 5

SAME AS TYPE 1 EXCEPT AS SHOWN



TYPE 6

SAME AS TYPE 1 EXCEPT AS SHOWN



PART NUMBER	TYPE	"A" ±.005	"B" ±.005	"C" ±.005	"E" ±.015	"D" HOLE DIAMETER	THREAD	FINISH	MAKE FROM
3000H 6-1C	5	.174	.359	.172	.062	.141/.131		NONE	
3000H 6-1C2	5	.174	.359	.172	.062		#8-32	NONE	3000H 6-1C2LT
3000H 6-1C2LT	5	.174	.359	.172	.062	.151/.148		NONE	
3000H 6-1C1	5	.174	.359	.172	.062		#8-32	ELECTRO-TIN PCS 1002	3000H 6-1C2
3000H 6-1D	5	.174	.359	.156	.078	.121/.111		NONE	
3000H 6-1ELT	5	.174	.359	.156	.078	.125/.122		NONE	
3000H 6-1E1LT	5	.174	.359	.156	.078	.125/.122		ELECTRO-TIN PCS 1002	3000H 6-1ELT
3000H 6-1E	5	.174	.359	.156	.078		#6-32	NONE	3000H 6-1ELT
3000H 6-1E1	5	.174	.359	.156	.078		#6-32	ELECTRO-TIN PCS 1002	3000H 6-1E
3000H 6-1K	3	.174	.359				#10-32	ZINC PLATE PCS 1009	3000H 6-1K3
3000H 6-1K1	3	.174	.359				#10-32	ELECTRO-TIN PCS 1002	3000H 6-1K3
3000H 6-1K2LT	4	.174	.359			.177/.174		NONE	
3000H 6-1K2	4	.174	.359				#10-32	NONE	3000H 6-1K2LT
3000H 6-1K3LT	3	.174	.359			.177/.174		NONE	
3000H 6-1K3	3	.174	.359				#10-32	NONE	3000H 6-1K3LT
3000H 6-8B	2	.174	.359	.156	.078	.121/.111		NONE	
3000H 6-8CLT	2	.174	.359	.156	.078	.125/.122		NONE	
3000H 6-8C	2	.174	.359	.156	.078		#6-32	NONE	3000H 6-8CLT
3000H 6-8C1	2	.174	.359	.156	.078	.121/.111		ELECTRO-TIN PCS 1002	3000H 6-8C
3000H 6-8C2	2	.174	.359	.156	.078		#6-32	CADMIUM PLATE PCS 1013	3000H 6-8C
3000H 6-8C3	2	.174	.359	.156	.078	.125/.122		ELECTRO-TIN PCS 1002	3000H 6-8CLT
3000H 6-8ELT	2	.174	.359	.172	.062	.151/.148		NONE	
3000H 6-8E	2	.174	.359	.172	.062		#8-32	NONE	3000H 6-8ELT
3000H 6-8E1	2	.174	.359	.172	.062		#8-32	NICKEL PLATE PCS 1000	3000H 6-8E
3000H 6-8E2LT	4	.174	.359			.151/.148		NONE	
3000H 6-8E2	4	.174	.359				#8-32	NONE	3000H 6-8E2LT
3000H 6-8E5	2	.174	.359	.172	.062		#8-32	ELECTRO-TIN PCS 1002	3000H 6-8E
3000H 6-8E6	4	.174	.359				#8-32	ELECTRO-TIN PCS 1002	3000H 6-8E2
3000H 6-8E7	2	.174	.359	.172	.062	.151/.148		ELECTRO-TIN PCS 1002	3000H 6-8ELT
3000H 6A-3A	1			.172	.062	.141/.131		NONE	
3000H 6A-3B	1			.156	.078	.121/.111		NONE	
3000H 6A-3CLT	1			.172	.062	.151/.148		NONE	
3000H 6A-3C	1			.172	.062		#8-32	NONE	3000H 6A-3CLT
3000H 6A-3C1	1			.172	.062		#8-32	ELECTRO-TIN PCS 1002	3000H 6A-3C
3000H 6A-3DLT	1			.156	.078	.125/.122		NONE	
3000H 6A-3D	1			.156	.078		#6-32	NONE	3000H 6A-3DLT
3000H 6A-3D1	1			.156	.078		#6-32	ELECTRO-TIN PCS 1002	3000H 6A-3D
3000H 6A-3D2LT	1					.125/.122		NONE	
3000H 6A-3D2	1						#6-32	NONE	3000H 6A-3D2LT
3000H 6A-3D3	1						#6-32	ELECTRO-TIN PCS 1002	3000H 6A-3D2
3000H 6A-3D4LT	4	.174	.359			.125/.122		NONE	
3000H 6A-3D4	4	.174	.359				#6-32	NONE	3000H 6A-3D4LT
3000H 6A-3D4-1	4	.174	.359				#6-32	ELECTRO-TIN PCS 1002	3000H 6A-3D4
3000H 6A-3ELT	1					.151/.148		NONE	
3000H 6A-3E1	1						#8-32	NONE	3000H 6A-3ELT
3000H 6A-3E	1						#8-32	ELECTRO-TIN PCS 1002	3000H 6A-3E1
3000H 6A-5LT	1					.177/.174		NONE	
3000H 6A-5	1						#10-32	NONE	3000H 6A-5LT
3000H 6A-6DLT	6					.125/.122		NONE	
3000H 6A-6D	6						#6-32	NONE	3000H 6A-6DLT
3000H 6A-6D1	6						#6-32	ELECTRO-TIN PCS 1002	3000H 6A-6D

- NOTES:
 1. TO ACCEPT A .250 X .032 MALE TAB.
 2. "ARK-LES" TO BE DIE STAMPED APPROXIMATELY AS SHOWN.
 3. "D" HOLE CENTERLINE LOCATION MUST BE HELD TO WITHIN .010 T.I.R. OF .312 DIMENSION.
 4. INSERTION/WITHDRAWAL FORCES TO COMPLY WITH UL 310.
 5. ALL CORNERS SHOWN SHARP MAY HAVE A .010 MAX. RADIUS.
 6. ALL TAPPED HOLES: ROLL THD. 65% MIN. THD., 2 FULL THD'S MIN.
 7. EARS ARE TO BE BENT UP WHERE APPLICABLE SO AS NOT TO ALLOW PASSAGE OF WIRE BETWEEN SCREW HEAD & EARS.

ARK-LES UNCONTROLLED SHEET 2 OF 2

AJ	3000H 6-8C3 & 3000H 6-8E7 ADDED	ECR #12255	2/7/02	RT	PROD. REL.	ECR 6008	1/15/87	RT	TOLERANCES UNLESS OTHERWISE SPECIFIED:
AH	REVISED PER ECR #12056		11/14/00	RT	QUOTE REL.				DECIMALS ±.010 METRIC ±0.25mm ANGLES ±1°
AG	REVISED PER ECR #12037		6/26/00	RT	DR: B J CARUTHERS		7/24/95		MATERIAL: .025±.001 THICK BRASS
AF	3000H-32 ADDED SHT 1 PER ECR #11533		6/19/98	RT	CHK'D: RWT		2-1-02		25000 / 1/2 HARD TENSILE: 57,000-57,000 PSI
AE	REVISED PER ECR #10702		10/24/98	RT	APP: S. J. DILL		2/7/02		FINISH: SEE TABLE
AD	REVISED & REDRAWN PER ECR #10608		7/24/95	BJC	SUPERCEDES DWG. DATED:		11/13/91		PART NO: 3000H 6/H6A/
REV.	DESCRIPTION		DATE	DR.	SCALE: 2=1		CAD NO: DT00006		

ORIGINAL IF RED