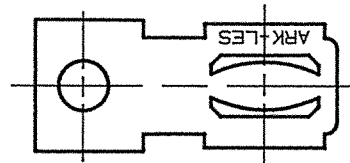
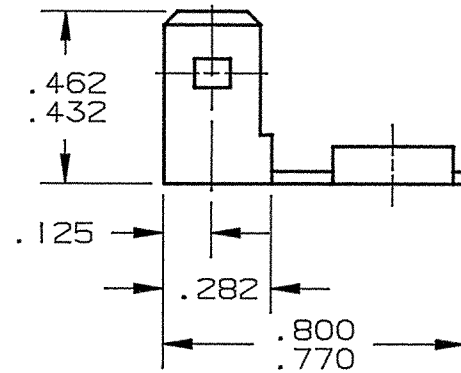
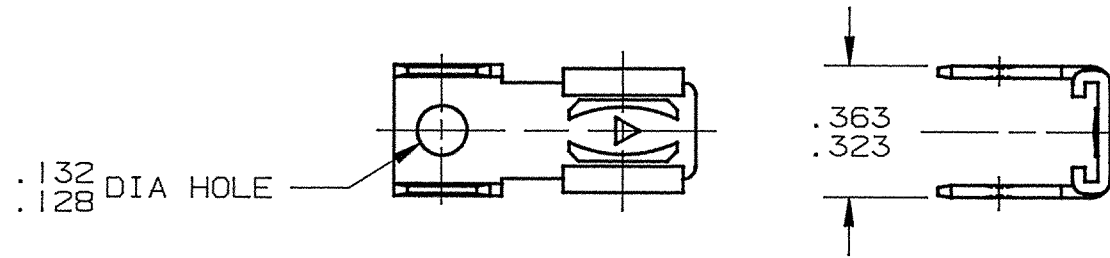


DEPT	
1	I
2	
3	
4	I
5	
6	
7	
8	
9	
10	
11	
12	
NC	
JZ	

PART NAME: TERMINAL, MALE & FEMALE

PART NO: 3000S10/

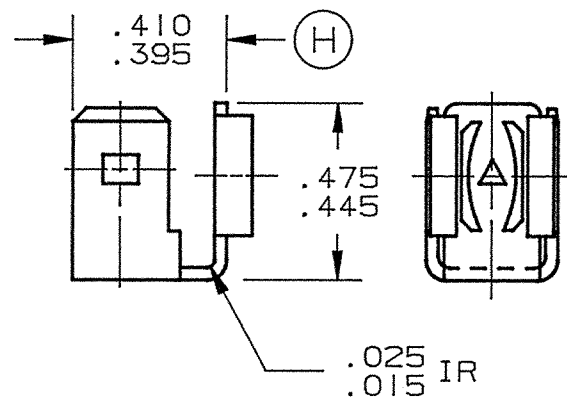
PART NUMBER	MATERIAL	TYPE	FINISH
3000S10-1	.032 ±.001 TH'K BRASS	1	NONE
3000S10-2		2	NONE
3000S10-2B		2	ELECTRO-TIN
3000S10-3		3	NONE
3000S10-4		1	ELECTRO-TIN
3000S10-5		3	ELECTRO-TIN



TYPE 1

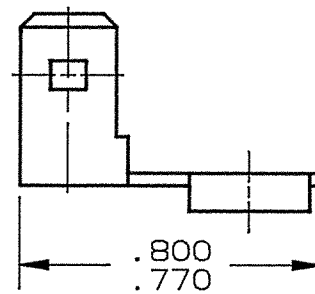
- NOTES:
1. TO ACCEPT .250 X .032 MALE TAB.
  2. TO ACCEPT .250 X .032 FEMALE RECEPTACLE.
  3. PARTS MADE IN COMBINATION WITH 3000S5-1 TOOLS.
  4. INSERTION/WITHDRAWAL REQUIREMENTS FOR 3000S10-2 ONLY:  
 1ST INSERTION: 13 LBS. MAX.  
 1ST WITHDRAWAL: 7-15 LBS.  
 6TH WITHDRAWAL: 6 LBS MIN.  
 USE 3000M703 TAB FOR TESTING.

(J)



TYPE 2

SAME AS TYPE 1 EXCEPT AS SHOWN



TYPE 3

SAME AS TYPE 1 EXCEPT AS SHOWN

**ARK-LES**  
UNCONTROLLED

			PROD. REL.	ECR 4588	10-5-83	R.T.	TOLERANCES UNLESS OTHERWISE SPECIFIED:		
			QUOTE REL.				DECIMALS ±.010	METRIC ±0.25mm	ANGLES ±1°
			DR:	M. BUMILA	12-7-92		MATERIAL: SEE TABLE		
J	REVISED PER ECR #11405	11/24/97	RT	CHK'D: R.W.T.	11-26-97		FINISH: SEE TABLE		
H	.390/.380 WAS .410 PER ECR #9967	1/11/94	BJC	APP: COR	11-26-97		PART NO: 3000S10/		
G	REVISED & REDRAWN PER ECR #9402	12/7/92	MB	SUPERCEDES DWG. DATED:	9-29-83				
REV.	DESCRIPTION	DATE	DR.	SCALE: 2:1	CAD NO: BTRO002				

ORIGINAL