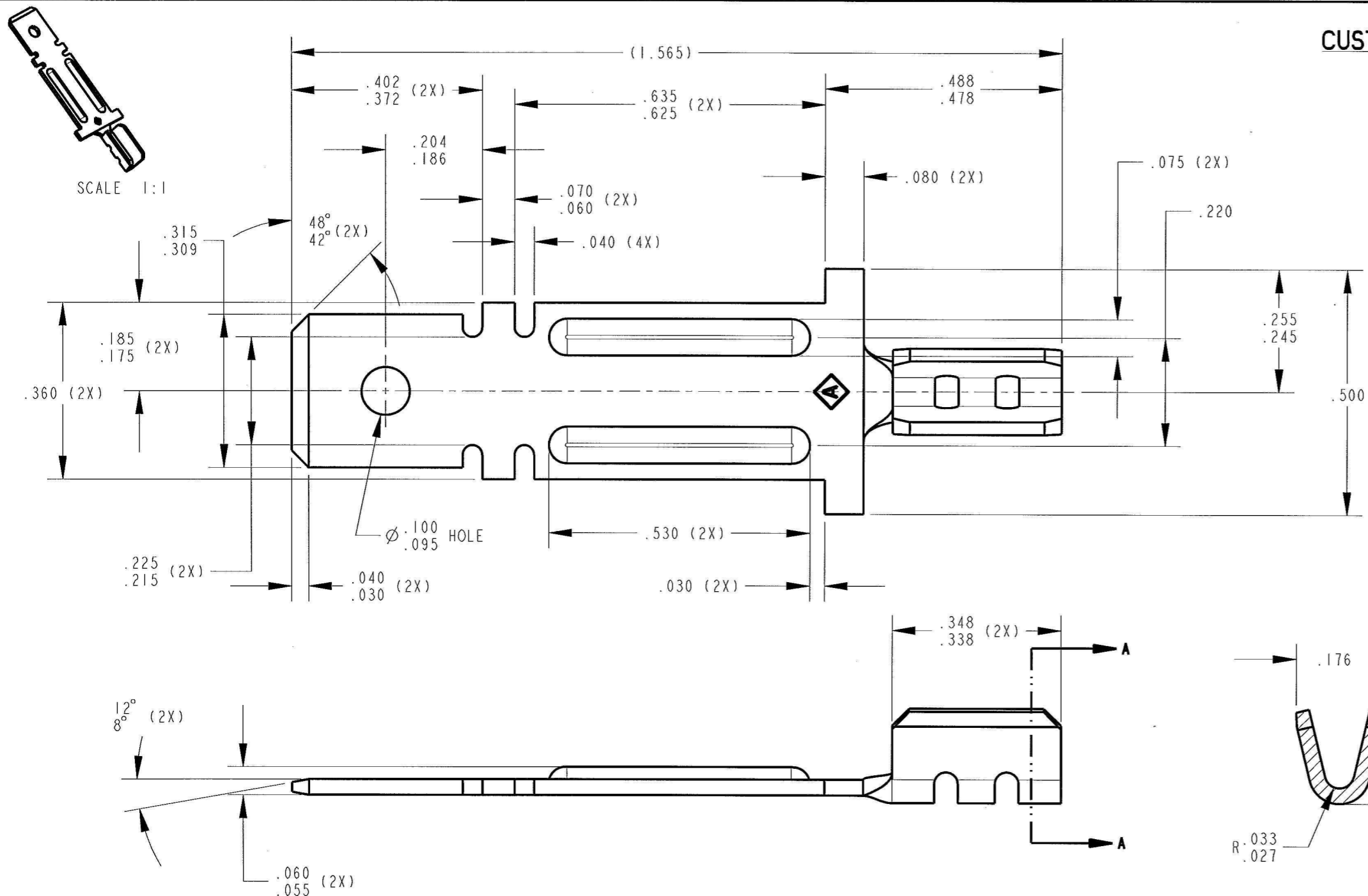


CUSTOMER DRAWING

P/N: 3800M 102J

REV  
G

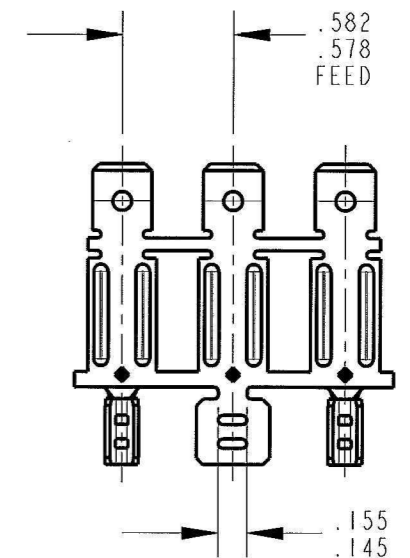


NOTES:

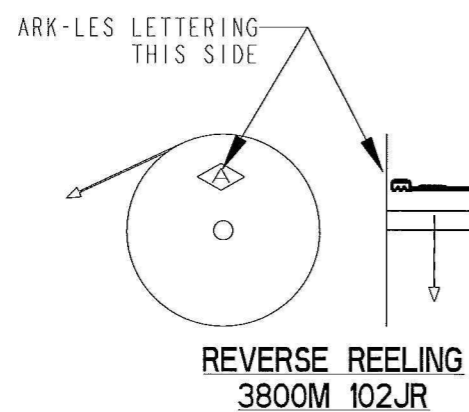
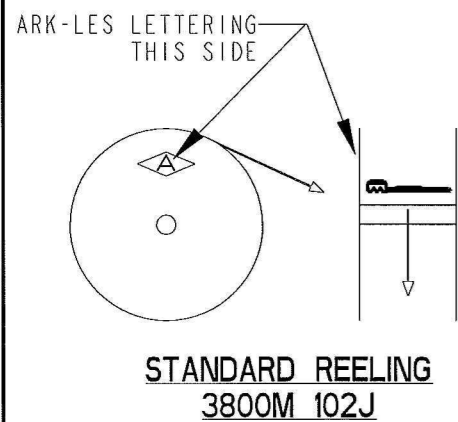
1. TAB MUST BE FLAT AND FREE OF BURRS OR RAISED PLATEAUS, EXCEPT THAT THERE MAY BE IN AN AREA .050 SURROUNDING THE DETENT HOLE, A RAISED PLATEAU OVER THE STOCK THICKNESS OF .001 PER SIDE.
2. TERMINAL TO MATE WITH .312 FEMALE TERMINAL.
3. WIRE RANGE: .0253-.064 DIA. (640-4,096 CMA).
4. FOR REVERSE REELING ADD SUFFIX "R" TO PART NUMBER (i.e. 3800M 102JR).

**ARK-LES  
UNCONTROLLED**

SECTION A-A



FABRICATED TERMINAL STRIP  
SCALE FULL



PRINT DIST.	PROD. REL.	JM 7720	2/13/96	CHK'D	TOLERANCES UNLESS OTHERWISE SPECIFIED
DEPT #	QUOTE REL.			Do 3/28/06	DECIMALS ±.010
ENG I	DRAWN BY	D.O'NEILL	9/28/05	APP.	METRIC ±0.25mm
SALES	SUPERSEDES DWG. DATED:			11/20/05	ANGLES ±1°
STO X	SCALE 4:1	DO NOT SCALE PRINT			3RD ANGLE PROJECTION
RAL	MATERIAL:	.032 ±.001 THICK C.R. STEEL			DWG SIZE: B
JZ	FINISH:	PRE-NICKEL PLATE			
CHINA					
REV.	DESCRIPTION	DATE	DR.		
G	REV. PER ECR# S000183	3/21/06	DON		
F	CUST/DRW REL. ECR# S000118	9/28/05	DON		

ArkLes CORPORATION STOUGHTON, MA

**ORIGINAL IF RED**

PART NAME CUSTOMER DRAWING  
TERMINAL, MALE HEATER

CAD#: 3800M\_102J-REVG\_CUST

P/N: 3800M 102J

REV G