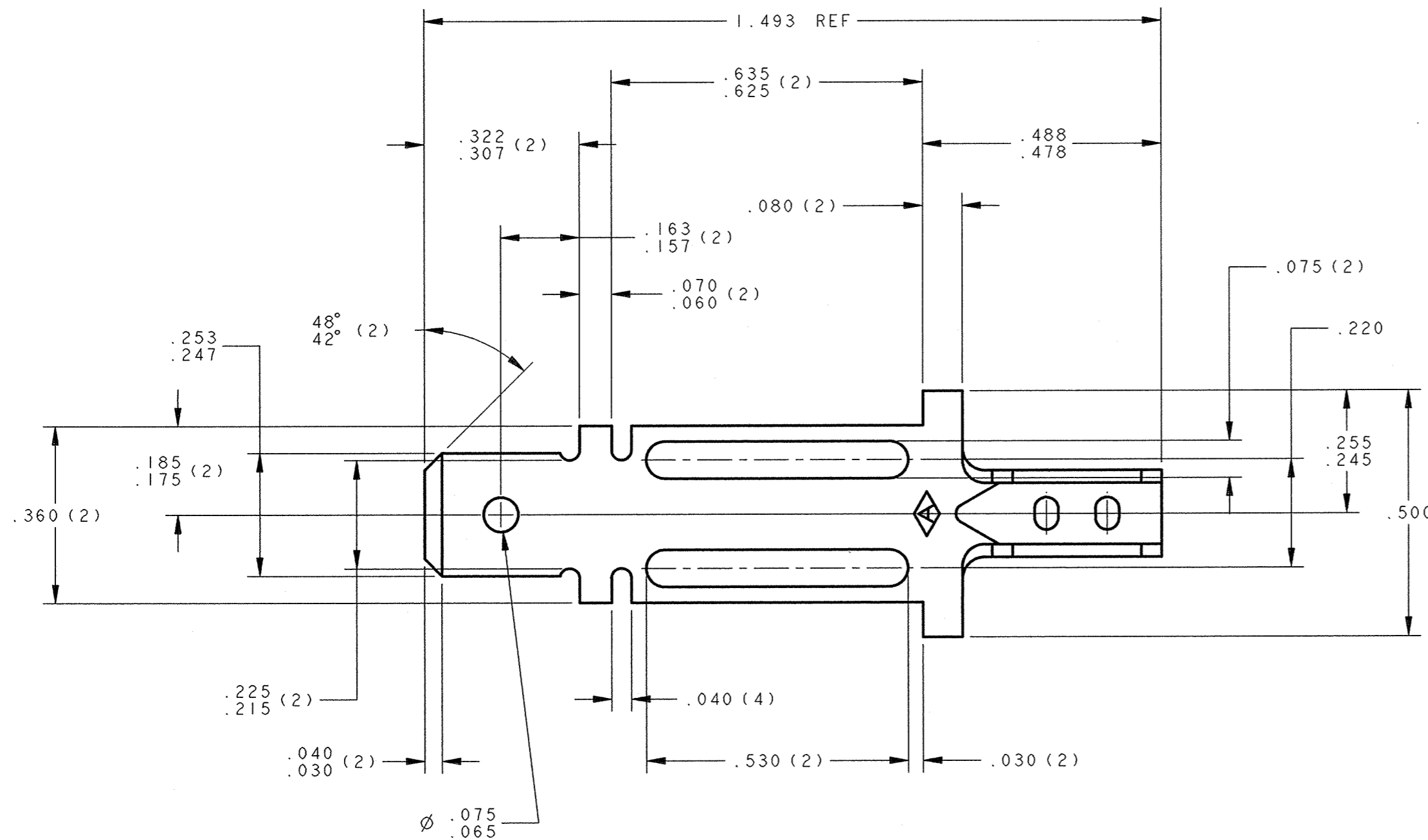
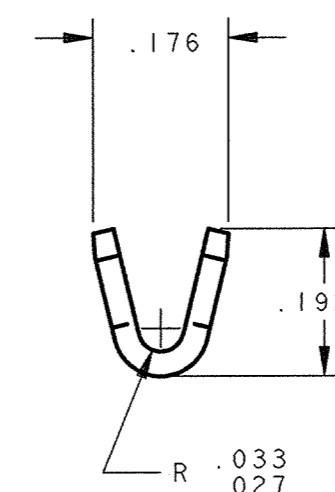
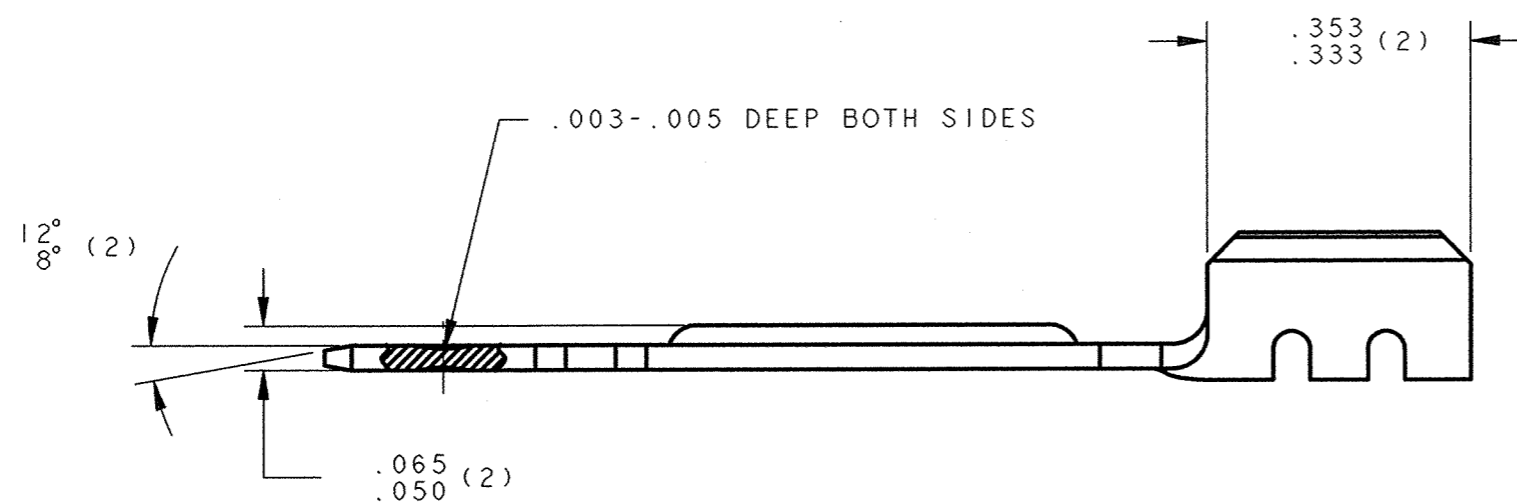


PART NUMBER	MATERIAL	FINISH
3800M 103A	.032 THK. BRASS PRE-TINNED PER PCS 1007	SEE MATERIAL
3800M 103J	.032 THK. C.R. STEEL PRE-NICKEL PLATE PER PCS 1012	SEE MATERIAL

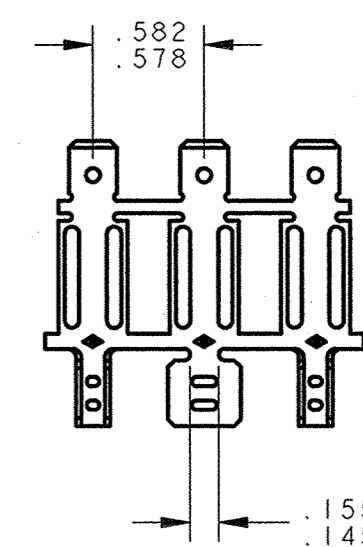


NOTE:

- TAB MUST BE FLAT AND FREE OF BURRS OR RAISED PLATEAUS, EXCEPT THAT THERE MAY BE IN AN AREA .050 SURROUNDING THE DETENT HOLE, A RAISED PLATEAU OVER THE STOCK THICKNESS OF .001 PER SIDE.
- TERMINAL TO MATE WITH .250 FEMALE TERMINAL.
- WIRE RANGE: .0253 - .064 DIA. (640-4, 096 CMA).

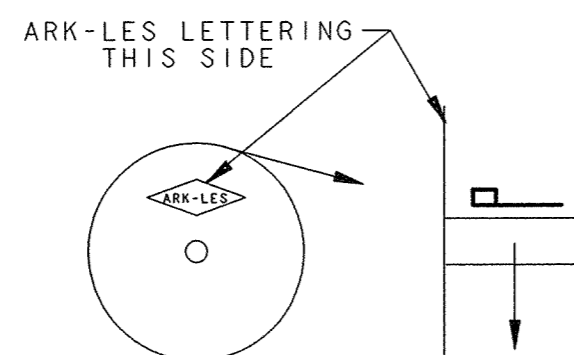


ARK-LES  
UNCONTROLLED



FABRICATED TERMINAL STRIP

SCALE: 1=1



REELING DIAGRAM

CUSTOMER DRAWING

REV.	DESCRIPTION	DATE	DR.	SCALE: 4=1	CAD NO: 3800M.103-REV0.CUST	PROD. REL. JM 7720 2/13/96 BJC	TOLERANCES UNLESS OTHERWISE SPECIFIED:
							DECIMALS ±.010 METRIC ±0.25mm ANGLES ±1°
						DR: B J CARUTHERS 1/26/95	MATERIAL: SEE TABLE
						CHK'D: DCO 5/19/95	FINISH: SEE TABLE
						APP: M. J. 5-19-95	PART NO: 3800M 103/
						SUPERCEDES DWG. DATED:	
						REL CUST. DWG. PER ECR# S000125 5/16/05 DON	

ORIGINAL IF RED